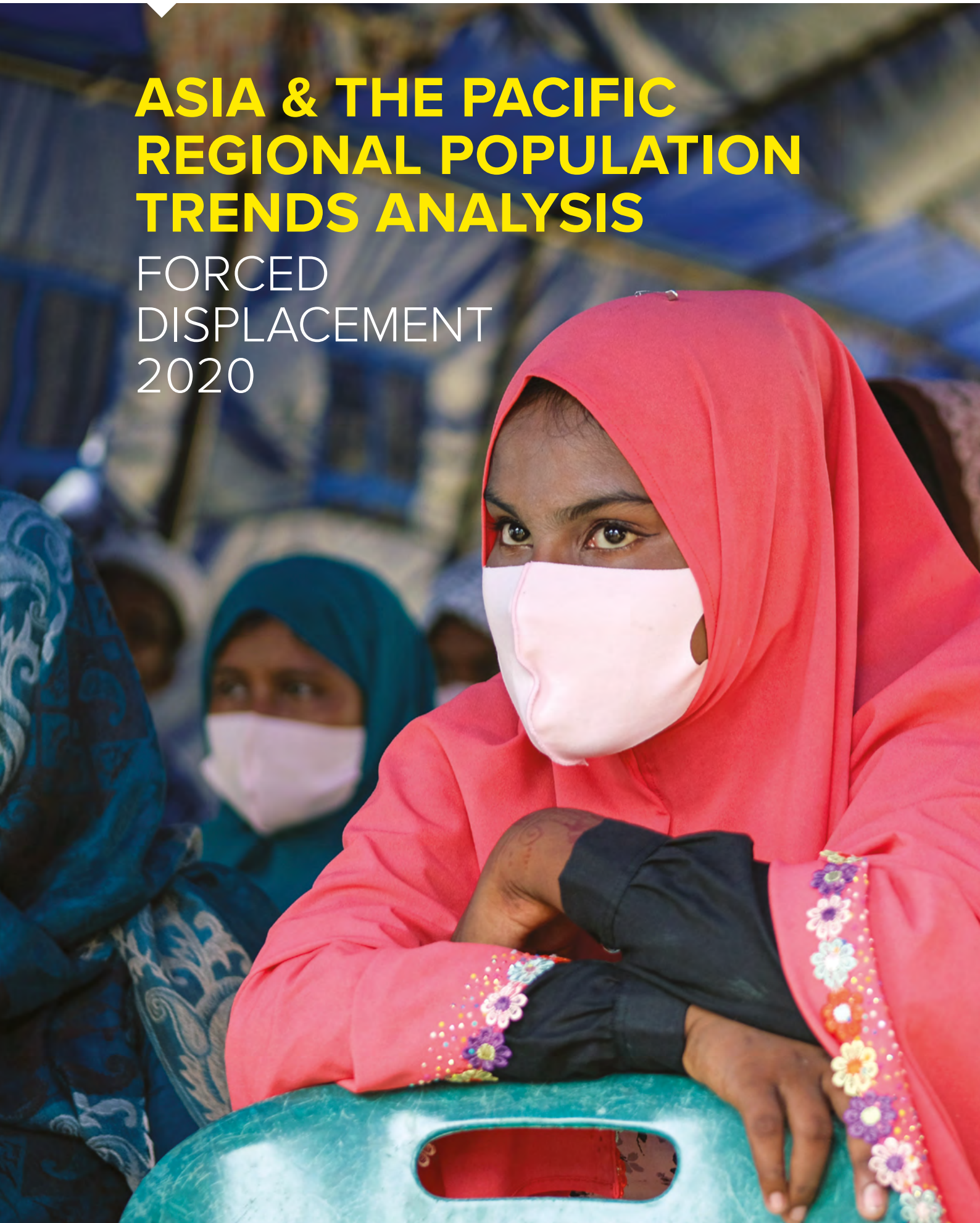




**UNHCR**  
The UN Refugee Agency

# ASIA & THE PACIFIC REGIONAL POPULATION TRENDS ANALYSIS

FORCED  
DISPLACEMENT  
2020



---

# Contents

<b>1. Regional Overview</b>	<b>3</b>
1.1 Regional Analysis	9
1.2 Impact of Covid-19 on new refugee registration trends	11
1.2.1 Impact of COVID-19 on average new registration	12
1.2.1.1 Refugee registration by UNHCR	12
1.2.1.2 Refugee registration by UNHCR and by State asylum systems	14
1.3 Solutions	14
<b>2. Country highlights of forcibly displaced and stateless population groups</b>	<b>17</b>
2.1 Pakistan – Country of asylum hosting the largest number of refugees and asylum-seekers in Asia and the Pacific	17
2.2 Myanmar – Country of origin of the largest stateless population in Asia and the Pacific (both forcibly displaced and non-displaced)	18
2.3 Afghanistan – Largest internally displaced population of concern to UNHCR in Asia and the Pacific	19
2.4 Afghanistan – Largest refugee returnee population of concern to UNHCR in Asia and the Pacific	21
<b>3. Myanmar Situation</b>	<b>21</b>
<b>4. Afghanistan Situation</b>	<b>24</b>

# Regional Overview

# 1

This report provides a summary overview of population statistics of the Asia and the Pacific region in 2020 from UNHCR's Annual Statistical Report and includes trends and analysis of the major population groups<sup>1</sup>, three leading focus countries and the two major displacement situations in the region.

## 9.8 MILLION

Total population of concern

## 4.2 MILLION

Total refugees and asylum-seekers

## 2.3 MILLION

Total stateless persons

## 38%

are children below 18

## 3.5 MILLION

Total internally displaced persons

## 2,500

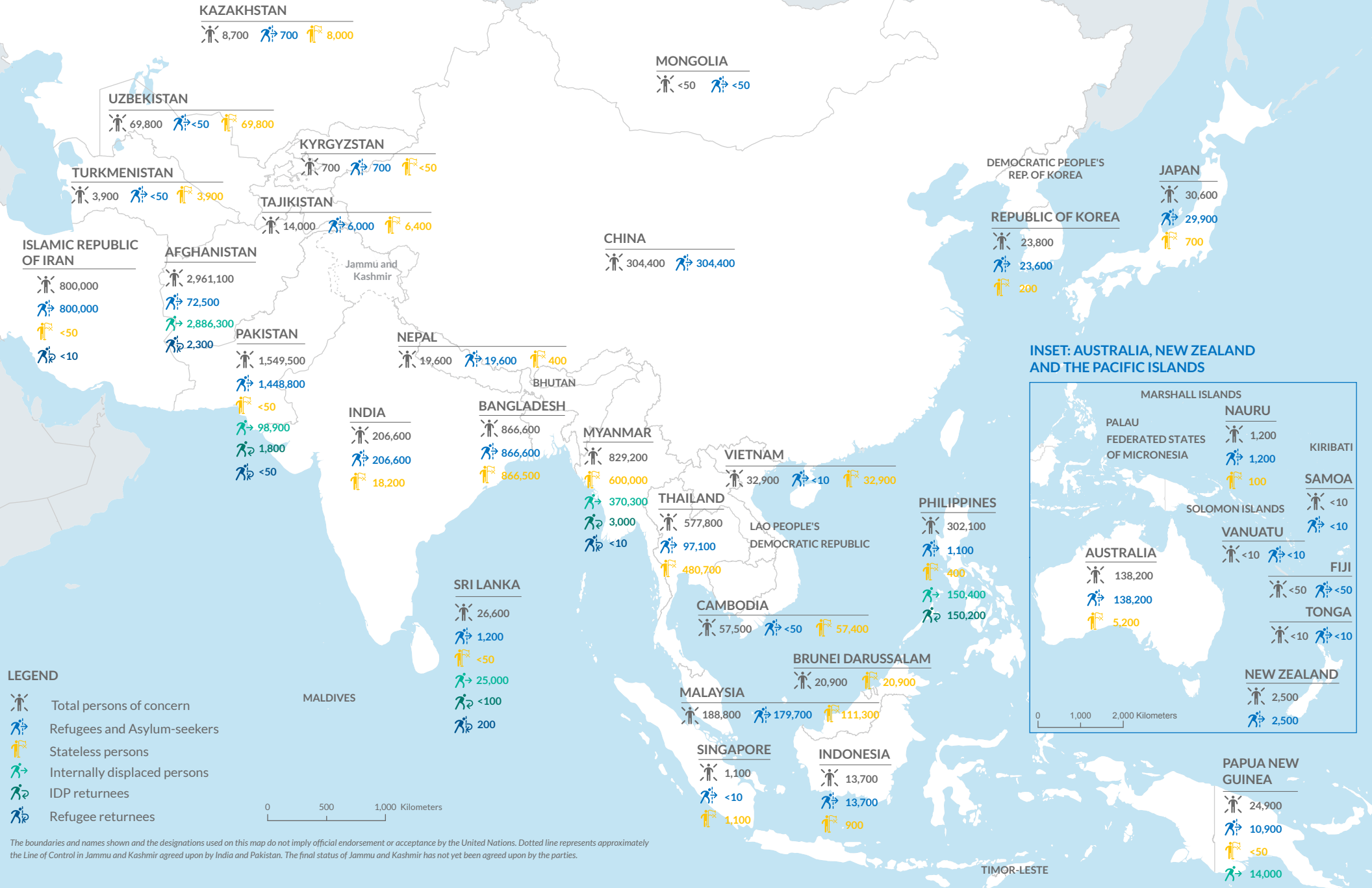
Total refugee returnees

## 70%

hosted in urban/  
peri-urban areas

<sup>1</sup> UNHCR - Refugee Statistics Definition of population groups

# REFUGEES, STATELESS PERSONS, IDPS AND RETURNEES IN THE ASIA AND THE PACIFIC REGION



- LEGEND**
- Total persons of concern
  - Refugees and Asylum-seekers
  - Stateless persons
  - Internally displaced persons
  - IDP returnees
  - Refugee returnees

0 500 1,000 Kilometers

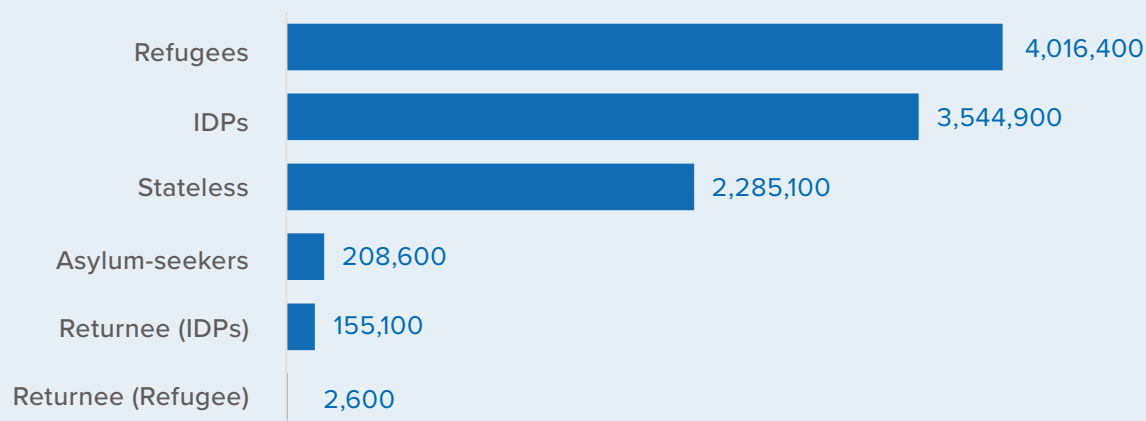
The boundaries and names shown and the designations used on this map do not imply official endorsement or acceptance by the United Nations. Dotted line represents approximately the Line of Control in Jammu and Kashmir agreed upon by India and Pakistan. The final status of Jammu and Kashmir has not yet been agreed upon by the parties.



The total number of persons of concern by end of 2020 stood at 9.8 million, a slight increase from 2019 due mainly to increases in the internally displaced population and the inclusion of assisted host community figures. There were 4 million refugees, 209,000 asylum-seekers, 2,500 returned refugees, 3.5 million internally displaced persons and 155,000 returned IDPs in the region. Persons under UNHCR's statelessness mandate in the region by end of 2020 stood at 2.3 million.

Asia and the Pacific hosts 11 per cent of the total persons of concern to UNHCR<sup>2</sup>. 19 per cent of the world's refugee population and 55 per cent of the world's stateless population live in the region. Globally, Pakistan and Bangladesh are among the 10 countries with the largest refugee/asylum-seeker populations while Afghanistan and Myanmar are the third and fifth country of origin of refugees and asylum-seekers. An additional 685,000 persons were identified as 'others of concern'. Others of concern are out of the scope of this report and not included in the analysis. An additional 685,000 persons were identified as 'others of concern'<sup>3</sup>.

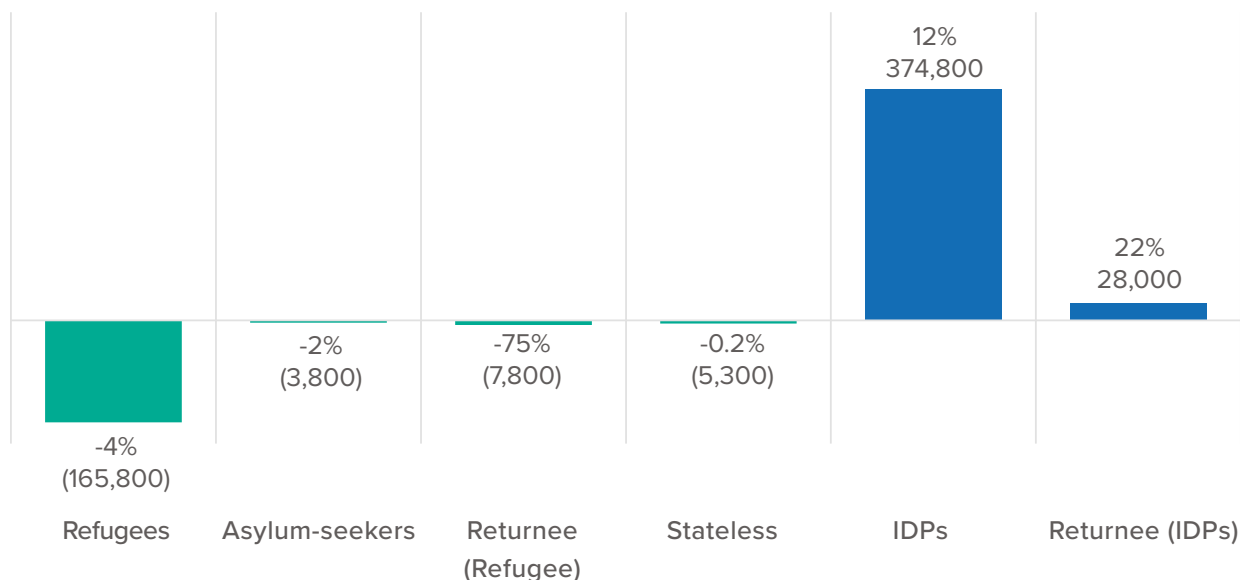
Figure 1 | **2020 Population of Concern**



<sup>2</sup> UNHCR - Refugee Statistics Refugee data finder

<sup>3</sup> This category refers to individuals who do not necessarily fall directly into any of the other groups but to whom UNHCR has been given a mandate to provide protection and/or assistance, including assisted host communities.

Figure 2 | Increases and Decreases in Population Groups (2019 vs 2020)

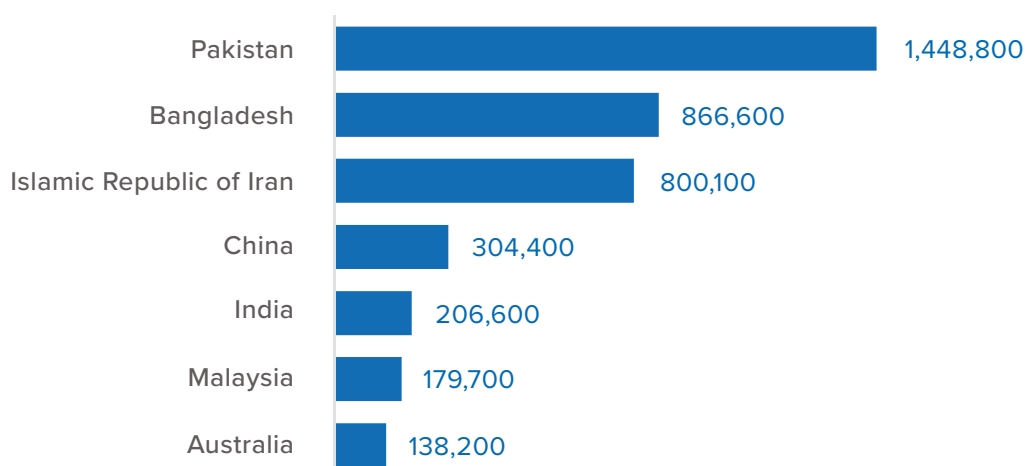


Compared to the previous year, the population groups with increases were the returned IDPs with 22 per cent and the number of internally displaced persons increased by 12 per cent. The number of refugees and asylum-seekers both reduced slightly by 4 per cent respectively. The largest decrease was within the refugee returnee category with 75 per cent.

### Refugees and asylum-seekers

The number of refugees and asylum-seekers equally declined by 4 per cent from 2019. The drop is largely due to updated figures received from the Government of the Islamic Republic of Iran, which reported a decrease of some 178,300 refugees, mostly among registered Afghans. The previous figures were provided by the Government and last updated in 2015. Together, Pakistan, Bangladesh and the Islamic Republic of Iran continue to host 13 per cent of the global total refugee population. The largest countries of origin of refugees in the region remain Afghanistan and Myanmar. There were 1.4 million refugees and asylum-seekers in Pakistan in 2020, composed primarily of the registered Afghan Proof of Registration (PoR) cardholders and 866,000 refugees in Bangladesh, predominantly Rohingya refugees from Myanmar who are also stateless. The Islamic Republic of Iran hosted 800,000 registered refugees (Amayesh and Hoviat card holders) comprising 780,000 registered Afghans and 20,000 registered Iraqis. Other refugee hosting countries in the region include China with 304,000 refugees and asylum-seekers (predominantly Vietnamese refugees registered with the Government of China), India with 207,000 (predominantly Sri Lankan and Tibetan refugees registered with the Government of India), Malaysia with 180,000 registered refugees and asylum-seekers and Australia with 138,000 registered refugees and asylum-seekers.

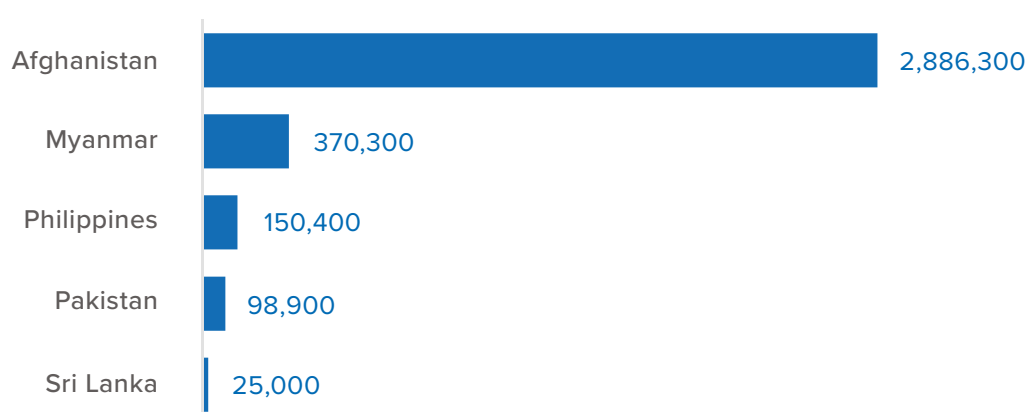
Figure 3 | 2020 Largest Countries of Asylum



### Internally displaced persons

The number of people displaced inside their own countries due to armed conflict, generalized violence or human rights violations continued to grow in 2020. There was a 12 per cent increase in the number of internally displaced persons in the region compared with 2019 figures. The changes are mainly due to increases in IDP populations with more than 300,000 newly displaced persons in Afghanistan and 63,000 newly displaced persons in Myanmar, in 2020. Afghanistan remains the country with the largest internally displaced population with 2.9 million IDPs, followed by Myanmar with 370,000 IDPs, the Philippines with 150,000 IDPs, Pakistan with 99,000 IDPs, Sri Lanka with 25,000 IDPs, and Papua New Guinea with 14,000 IDPs, as of the end of 2020<sup>4</sup>. Significant new displacement within Myanmar was observed towards the end of the first quarter of 2021 following the military takeover on 1 February 2021 but is not covered in this report.

Figure 4 | 2020 Countries with the Most IDPs of Concern to UNHCR



<sup>4</sup> UNHCR ASR source of Papua New Guinea figures is IDMC. IDMC estimation methodology can differ from other sources. Source: <https://www.unhcr.org/refugee-statistics/download/?url=E1ZxP4>

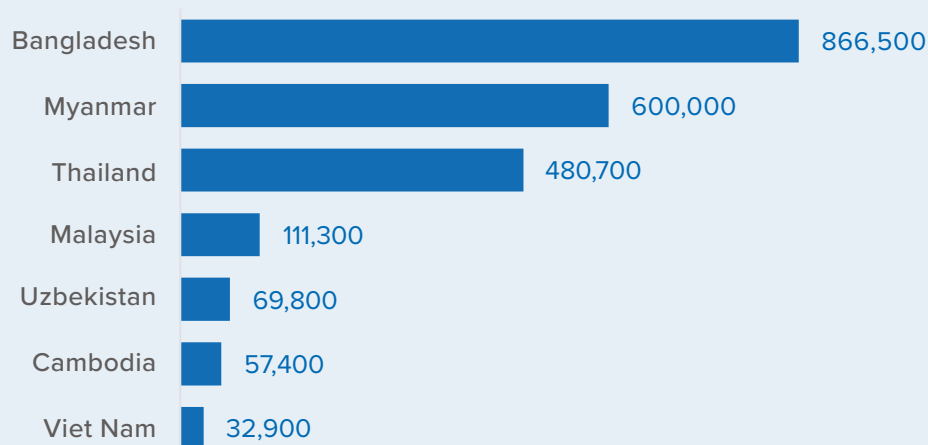


Tip Rungseangthong, a stateless person, with Yutthachai Jaju, a Community Mobilizer at ADRA, in Chiang Rai, Thailand. Formerly a stateless person himself, Yutthachai now helps others to navigate the nationality application process.

### Stateless populations (displaced and non-displaced)

The number of persons not considered as nationals by any country is significantly high in the Asia and Pacific region. A total of 2.3 million persons without nationality were reported in the region, as illustrated in the map with both displaced and non-displaced stateless populations<sup>5</sup>. Bangladesh hosts the highest number of displaced stateless persons with 866,000 by end of 2020, mainly Rohingyas forcibly displaced from Myanmar. An estimated 600,000 Rohingya continue to remain in Rakhine State, Myanmar, of whom 144,000 are internally displaced. Other countries in the region with displaced and/or non-displaced stateless populations include Thailand with 481,000 stateless persons, Malaysia with 111,000 stateless persons (mostly Rohingya refugees), Uzbekistan with 70,000 stateless persons, Cambodia with 57,000 stateless persons, and Viet Nam with 33,000 stateless persons.

Figure 5 | **2020 Countries with Largest Stateless Population**



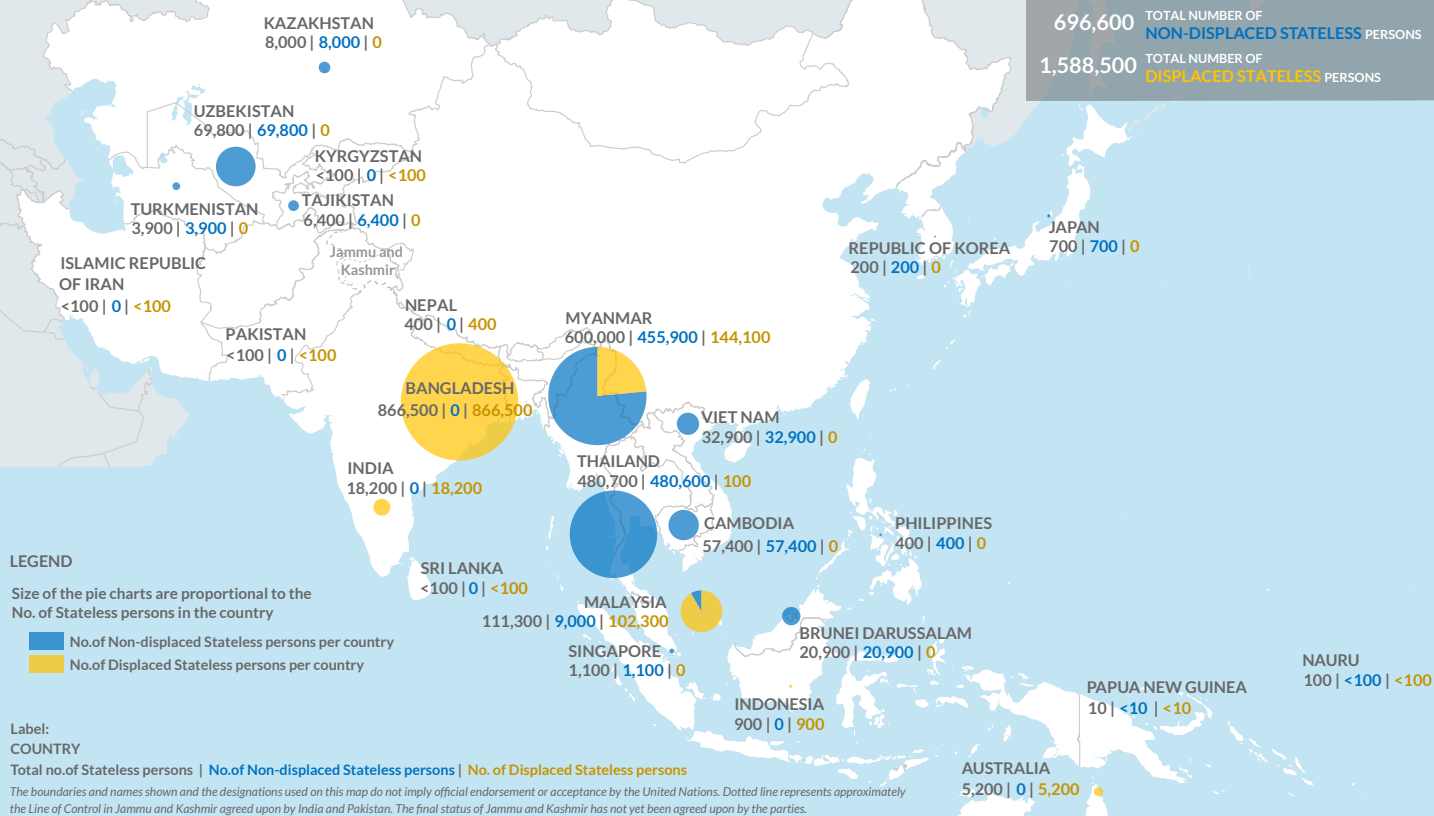
<sup>5</sup> Stateless population refers to those individuals without a nationality in their country of habitual residence. Non-stateless population refers to those individuals without a nationality in their country of habitual residence and who are either internally or internationally displaced.



## DISPLACED AND NON-DISPLACED STATELESS POPULATIONS IN THE ASIA AND THE PACIFIC REGION

### KEY FIGURES FOR THE REGION

2,285,100	TOTAL NUMBER OF STATELESS PERSONS
696,600	TOTAL NUMBER OF NON-DISPLACED STATELESS PERSONS
1,588,500	TOTAL NUMBER OF DISPLACED STATELESS PERSONS



## 1.1 REGIONAL ANALYSIS

Over the last decade the Asia and the Pacific region experienced a relatively uniform increase in the number of persons of concern, with exception of 2012 to 2014, during which there was a decrease. The numbers of refugees and asylum-seekers remained relatively stable below 4 million prior to 2017. The increase in 2017 (20 per cent) compared to the previous year is due to the outflows of Rohingya from Myanmar which also caused a decrease in (non-displaced) stateless figures in 2017. Since 2018, both displaced and non-displaced stateless persons have since been reported in the Annual Statistical Report to ensure an accurate record of persons of concern in the region.

The number of IDPs have steadily increased in the past 10 years mainly due to the Afghanistan conflict. In 2014, there was an increase of 42 per cent in IDPs compared to the previous year. IDPs in Afghanistan have increased with a yearly average of 24 per cent over the past 10 years.

The figure of refugee returnees has consistently declined since a large wave of returns in 2016 mainly to Afghanistan.

The most fluctuating group in terms of numbers within the past decade is the IDP returnees. There were over 800,000 IDP returnees in 2011 declining to a low figure of 175,000 in 2014 and a sharp increase to over one million in 2015 followed by a gradual decline to 155,000 in 2020. Stateless population figures have also remained relatively stable, and since 2018, are also now reflected in the displaced stateless figures Rohingya in Bangladesh.

Figure 6<sup>6</sup> | Trends by Population Type (2011–2020)

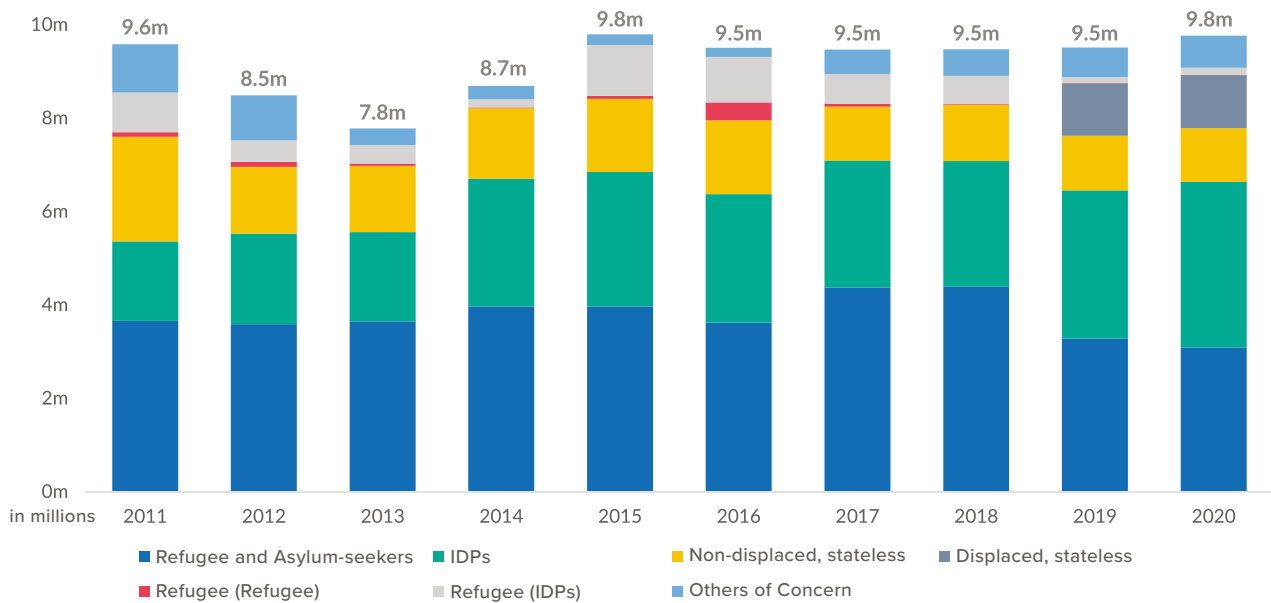
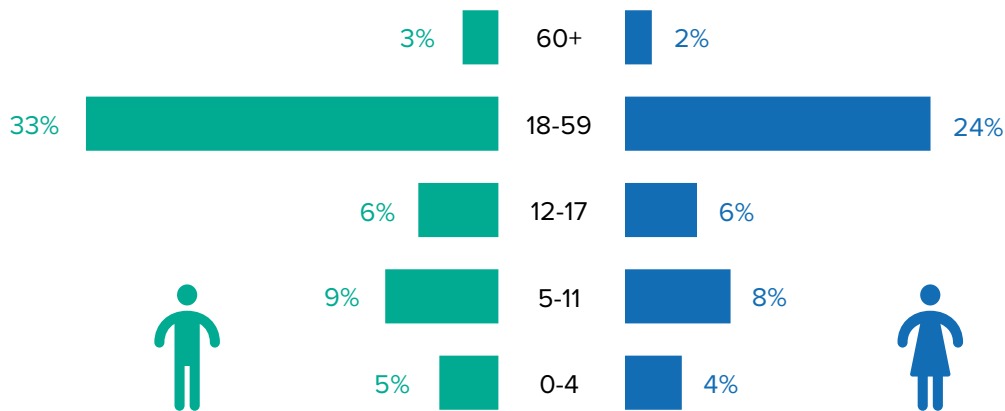


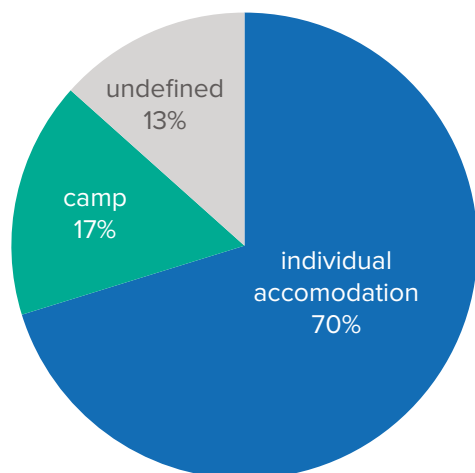
Figure 7 | 2020 Demographic Composition



Available demographic data for persons of concern in the region for 2020 show a clear male dominance of 55 per cent of the total population and males have higher proportions in all age groups. Of the total population, 38 per cent are children below the age of 18 and 5 per cent are elderly 60 years and above. Due to missing values and gaps in the demographic data the category ‘others of concern’ and returned IDPs are excluded from the demographic analysis and chart presented. The refugee demographic data are complimented by estimation of the missing demographic values.

<sup>6</sup> The population groups in this chart should not be summed up to calculate the total POCs figures as the stateless population group includes both non-displaced and displaced stateless.

Figure 8 | 2020 Accommodation Type

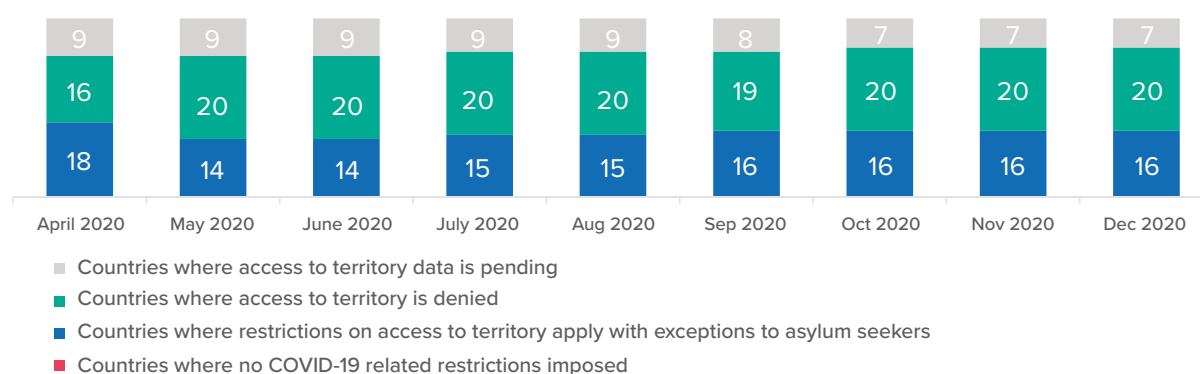


Of the total number of persons of concern in the region, 17 per cent of the population currently reside in managed camp or camp-like settings (1 in 5 persons of concern in the region), 70 per cent reside out of camps (in urban or rural accommodation), and 13 per cent live in undefined accommodation types. Out of all the forcibly displaced persons residing in camps 56 per cent of them are in Bangladesh and 29 per cent in Pakistan.

## 1.2 IMPACT OF COVID-19 ON NEW REFUGEE REGISTRATION TRENDS

Since the first case of COVID-19 was recorded in December 2019, more than 170 million people worldwide have contracted the virus. In the Asia and the Pacific region, an estimated 30 million people have been confirmed to have contracted COVID-19 and 426,000 COVID-19 deaths have been reported in the region<sup>7</sup>. 67 per cent of all cases in Asia and the Pacific region have been reported in the South Asia sub-region.

Figure 9 | Borders and admission of asylum-seekers 2020



People who have been forcibly displaced or who are stateless have been among the hardest hit by COVID-19. Measures to contain the spread of COVID-19 have directly impacted the functioning of asylum systems all over the world. The closure of borders and restrictions on movement making it considerably more difficult for people fleeing war and persecution to reach safety. At the peak of the pandemic in 2020, some 28 countries in the Asia and the Pacific region had closed their borders, with only 8 States making exceptions for people seeking asylum, which improved by the end of 2020 to 16 States making exceptions for persons seeking asylum.

## 1.2.1 Impact of COVID-19 on average new registration

### 1.2.1.1 Refugee registration by UNHCR

Refugee registration by UNHCR provides another useful measure of the impact of these restrictions. In 2020, UNHCR refugee registration numbers globally dropped to their lowest levels since 2012, and some 42 per cent lower than in 2019. In the Asia and the Pacific region alone, UNHCR refugee registration numbers reduced by 76 per cent overall in 2020 compared to 2019, although only 58 per cent reduction in refugee registration compared to 2019 was attributable to the impact of COVID-19. The remaining 18 per cent reduction is the result of the completion of the large-scale registration exercise that took place in Bangladesh in 2019. UNHCR operations, predominantly in the South-East and South Asia sub-regions reported significant reductions in new registration numbers compared to 2019, based on registration figures recorded in the corporate proGres database.

The reduction in new registration figures are as a result of access restrictions to countries of asylum in the region, but also due to movement control restrictions within countries of asylum hindering the ability of asylum-seekers to approach UNHCR offices for registration. Notably, trends from UNHCR's proGres registration system indicate that the greatest reduction in new registration was recorded in quarter two of 2020 with a drop from 14,000 new registration in quarter one to only 4,800 new registration in quarter two in UNHCR operations in the region. With UNHCR operations adopting remote registration modalities, new registration figures steadily increased to 7,800 new registration in quarter three of 2020 and to 11,000 new registration in quarter four of 2020. In the first quarter of 2021, new registration figures are back to 22,000, a similar rate compared to quarter one of 2019 new registration figures (prior to COVID-19 lockdowns in the region).



### Refugee registration figures drop across the Region

↓77%

Malaysia

↓70%

Bangladesh

↓66%

India

↓47%

Thailand

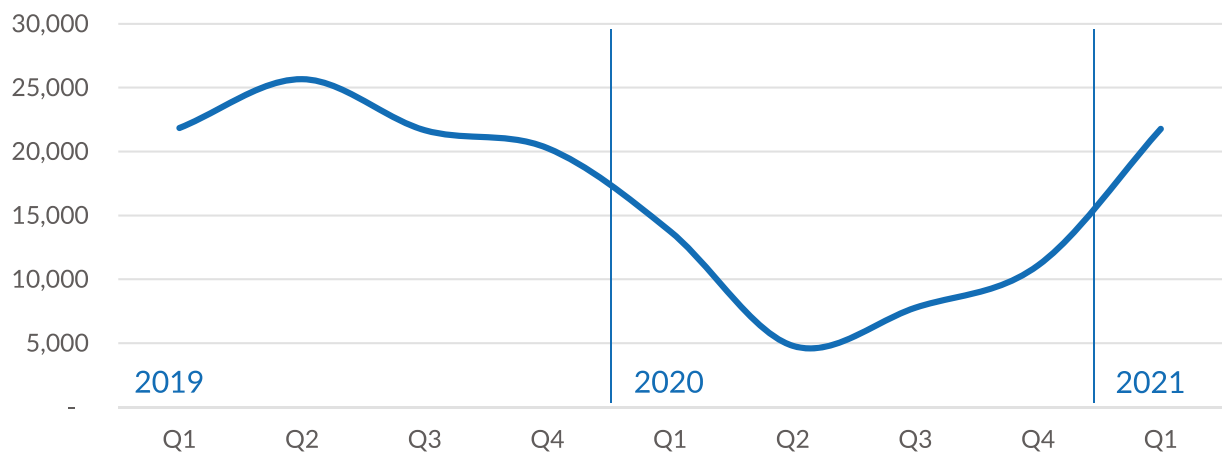
↓26%

Indonesia

7 WHO statistics as of June 2021, <https://covid19.who.int/>



Figure 10 | **Estimated new registration trends by quarter in mandate UNHCR operations 2019–21**



New arrivals registered in Aceh, Indonesia.

Improvements in the new registration figures towards the end of 2020 and early 2021 in UNHCR operations reflect the implementation of innovative approaches to remote registration conducted to ensure the continuity of registration activities for those most in need of protection and documentation. UNHCR implemented online self-service portals for asylum-seekers to submit registration requests, as well as strengthened hotline and phone-based registration interviews. Where possible, video-calls were arranged with asylum-seekers to verify their identities and capture their photographs, prior to collection of their information for registration. In emergency situations, including the registration of boat arrivals in Aceh, Indonesia, enhanced hygiene measures were implemented to ensure timely access to safe and secure registration, which facilitated shelter, assistance and protection for the new arrivals.

### 1.2.1.2 Refugee registration by UNHCR and by State asylum systems

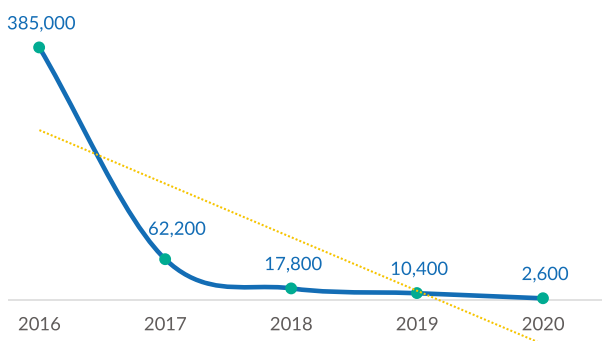
Globally, the number of new asylum-seekers registered at first instance<sup>8</sup> (that is, by the initial administrative or judicial authority), dropped by 45 per cent, the biggest single-year drop since accurate records began in 2000. In Asia and the Pacific, total new registration applications in both UNHCR and State asylum systems also dropped by 45 per cent compared to 2019<sup>9</sup>. Pakistan had no reduction and continued to process the new birth registration of PoR cardholders, while Australia saw a reduction of 30 per cent in asylum applications and Korea a reduction of 57 per cent in asylum applications compared to 2019.

## 1.3 SOLUTIONS

Durable solutions include voluntary repatriation, resettlement to a third country, local integration, naturalization and return to place of origin prior to displacement (for IDPs). However, a growing number of displaced populations have limited opportunities for a durable solution. The COVID-19 pandemic has only exacerbated these challenges. The partial or full closure of borders, along with more general restrictions on movement aimed at limiting the pandemic’s spread, has dramatically impacted opportunities for displaced people to return to their home countries or resettle to other countries.

### Voluntary Repatriation (of Refugees)

Figure 11 | Voluntary Repatriation Trends

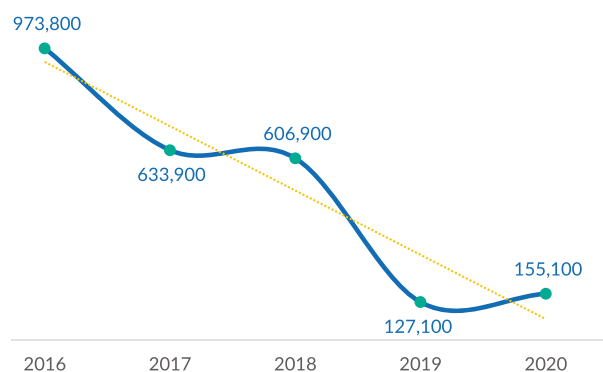


The region has experienced a constant decline in the number of voluntary refugee repatriations since 2016 with a sharp drop from 2016 to 2017 and gradual reductions with the lowest number in 2020 due mainly to travel restrictions as a result of the Covid19 pandemic with only 2,500 returns in the region. Afghanistan accounts for at least 90 per cent of all returns in the region, with the largest refugee returnee figures in the region over the last 5 years. IOM<sup>10</sup> report some 800,000 undocumented Afghans return from Pakistan in 2020.

<sup>8</sup> The data for some countries may include a significant number of repeat claims, i.e. the applicant has submitted at least one previous application in the same or another country.  
<sup>9</sup> The estimated percentage change in first instance asylum applications in 2020 does not include Government-registered refugee populations in Iran, China, India and Nepal, as detailed information on this caseload is not available.  
<sup>10</sup> [afghanistan-return\\_of\\_undocumented\\_afghans\\_situation\\_report\\_20-31\\_december\\_2020.pdf](https://reliefweb.int/report/afghanistan-return_of_undocumented_afghans_situation_report_20-31_december_2020.pdf) (reliefweb.int)

## Returnee IDPs

Figure 12 | Returnee (IDP) Trends (2016-2020)



Returned IDP numbers in the region has also experienced a downward trend in recent years with almost one million IDP returns in 2016 to the lowest level in 2019 with 127,000 IDP returns in 2019. In recent years, the Philippines has recorded large increases in returned IDPs surpassing Pakistan in 2018 and accounting for the upsurge from 2019 to 2020. In 2020 UNHCR assisted 35 per cent of the 155,000 returned IDPs.



© UNHCR/Elyor Nemat

Ali Choriev, a film producer and former stateless person, in Bukhara, Uzbekistan. He recently acquired Uzbek citizenship.

### Naturalization (of non-displaced Stateless persons)

In 2020, progress continued to be made to reduce the number of stateless people through acquisition or confirmation of nationality in line with Action 1 of the Global Action Plan to End Statelessness by 2024.

Significant numbers of people had their nationality confirmed in Asia and the Pacific region in 2020. At least 10 per cent of the stateless population at the beginning of 2020 acquired nationality in the following countries: Kyrgyzstan (69 per cent out of a population of 58 non-displaced stateless people at the start of 2020), Tajikistan (59 per cent out of 7,200 non-displaced stateless people), Uzbekistan (29 per cent out of 97,300 non-displaced stateless people), Kazakhstan (25 per cent out of 8,400 non-displaced stateless people).

### Resettlement (of Refugees)

UNHCR assisted resettlement departures from the region in 2020 were comparatively lower than previous years. Major countries of refugee settlement include the United States of America, Australia, and Canada. There was a 62 per cent reduction in resettlement departures from the region in 2020, compared to 2019, due to travel restrictions associated with the COVID19 pandemic. Some notable decreases include a reduction by 70 per cent in India, by 66 per cent in Malaysia and by 65 per cent in Thailand.

Resettlement arrivals to resettlement states in the region was equally affected by the pandemic and total arrivals declined by 79 per cent in 2020, compared to 2019. Australia experienced 80 per cent and New Zealand 67 per cent reduction in resettlement arrivals in 2020.

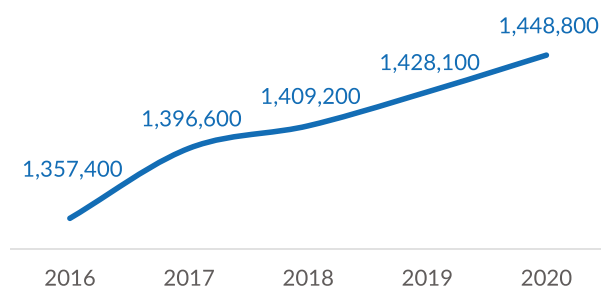


# Country highlights of forcibly displaced and stateless population groups

# 2

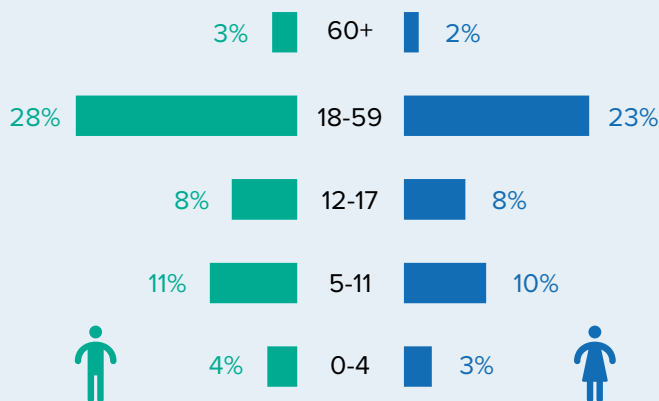
## 2.1 PAKISTAN – COUNTRY OF ASYLUM HOSTING THE LARGEST NUMBER OF REFUGEES AND ASYLUM-SEEKERS IN ASIA AND THE PACIFIC

Figure 13 | Refugees and Asylum-seekers in Pakistan



As in the past years, Pakistan remains the country of asylum hosting the largest number of refugees and asylum-seekers in the region with 1.4 million primarily registered Afghan Proof of Registration cardholders. Pakistan is also the fourth largest refugee-hosting country globally, in addition to Turkey, Colombia, and Germany.

Figure 14 | 2020 Demographic Composition of Refugees and Asylum-seekers in Pakistan



The refugee and asylum-seeker population in Pakistan is male dominated with 53 per cent. One in four refugee or asylum-seeker in Pakistan is a child under the age of 18 years old. The elderly aged 60 years and above remain relatively low, only three per cent of the total refugee and asylum population in Pakistan. Most refugees and asylum-seekers live in urban areas (71 per cent), with 40 per cent of refugees residing in Khyber Pakhtunkhwa Province and 20 per cent in Balochistan Province. The rest are dispersed throughout the country.

## 2.2 MYANMAR – COUNTRY OF ORIGIN OF THE LARGEST STATELESS POPULATION IN ASIA AND THE PACIFIC (BOTH FORCIBLY DISPLACED AND NON-DISPLACED)

Stateless Rohingya refugees have fled discrimination, persecution, and violence in Myanmar for decades. Hundreds of thousands sought safety in Bangladesh in 1978, 1992 and again in 2016 and 2017, when Myanmar military operations in Rakhine State resulted in over 700,000 Rohingya fleeing to Cox's Bazar District, in Bangladesh. Tens of thousands of Rohingya refugees have also fled to Malaysia, India, and other countries in other waves of displacement. For some 600,000 Rohingya who remain in Rakhine State in Myanmar, 144,000 are also internally displaced and largely confined to IDP camps, facing severe restrictions in movement. Most Rohingya IDPs have been unable to return to their places of origin. Among the internally displaced in Myanmar, 95,000 are located in Kachin State, 13,200 in Kayin State, 13,000 in Chin State, 10,000 in Shan (North) State, 2400 in Bago (East) Region and the rest on other areas. Sex and age disaggregated data of the non-displaced stateless Rohingya population in Myanmar is not currently available, although efforts are being made to improve the quality of the data.

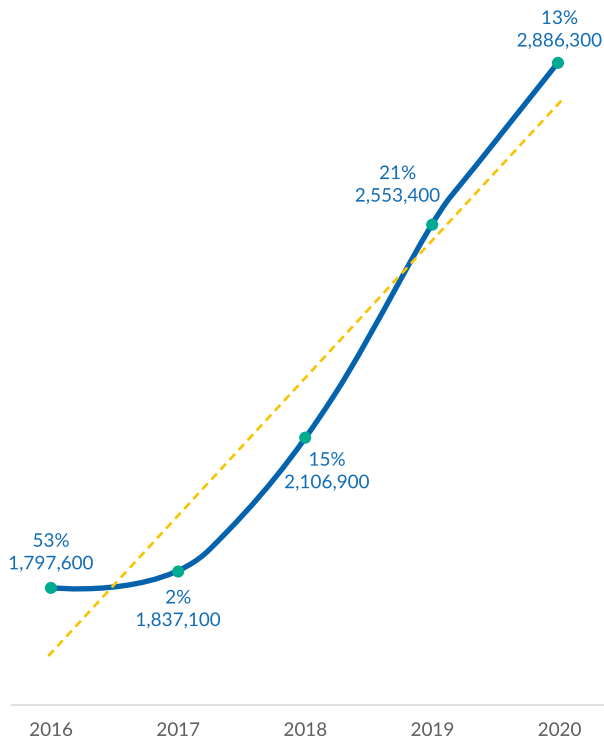
Sex and age disaggregated data of the non-displaced stateless Rohingya population in Myanmar is not currently available, although efforts are being made to improve the quality of the data.

### Maritime Movements

Despite difficult conditions for Rohingya refugees across the region, over 2,400 Rohingya attempted to reach other countries by sea in 2020, including 700 allowed to disembark by Bangladesh and nearly 400 who were rescued and welcomed by the people of Aceh, Indonesia, and brought to shore in an orderly and safe manner that mitigated public health risks. While the number of Rohingya who travelled by boat in 2020 is fewer than during the height of such movements from 2012 to 2015, it is a significant increase compared to recent years. The urgent need for a predictable framework in the region to rescue and disembark Rohingya has been underscored by the loss of some 200 refugees who died or disappeared at sea in 2020. Such a framework is needed so that Rohingya refugees are less compelled to resort to risky onward movement and so that countries do not fear that disembarking refugees will leave them to shoulder the responsibility alone and indefinitely.

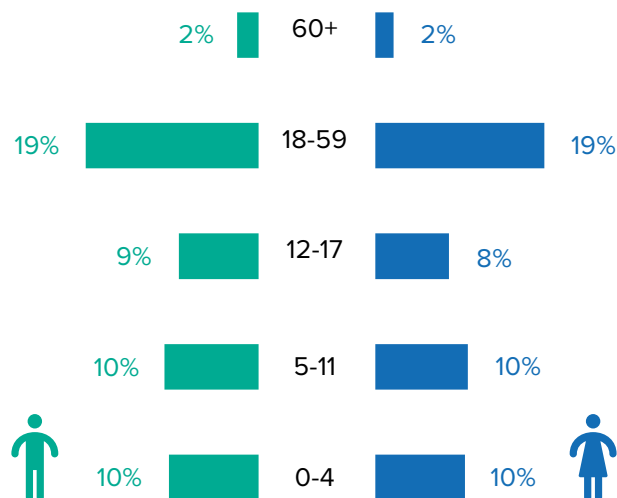
## 2.3 AFGHANISTAN – LARGEST INTERNALLY DISPLACED POPULATION OF CONCERN TO UNHCR IN ASIA AND THE PACIFIC

Figure 15 | IDPs of concern to UNHCR Trends in Afghanistan (2016-2020)



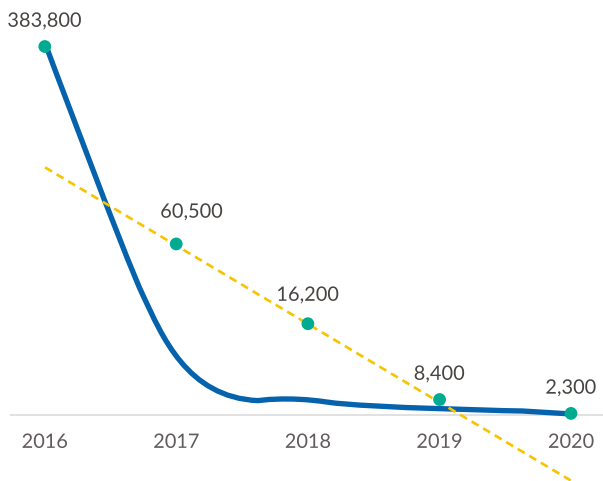
For nearly four decades, millions of Afghans have sought protection from conflict and persecution and found temporary solutions in neighboring countries, notably Pakistan and the Islamic Republic of Iran. At the same time, Afghanistan has seen substantial internal displacement resulting from conflict. For the past decade, Afghanistan remains a country with one of the largest internally displaced populations globally. Since 2017, IDP numbers have increased drastically at a rate of at least 10 per cent each year. Afghanistan is now the 6th largest IDP country globally and the country in Asia and the Pacific region with the largest IDP population, at 2.9 million IDPs. 330,000 persons were newly displaced in 2020 alone due to the deterioration in conflict and insecurity in Afghanistan. A large proportion of 58 per cent of IDPs are children under the age of 18 years and women make up 49 per cent of the total IDP population. All IDPs in Afghanistan live in individual accommodations, 47 per cent of whom live in rural areas.

Figure 16 | 2020 Demographic Composition of IDPs in Afghanistan



## 2.4 AFGHANISTAN – LARGEST REFUGEE RETURNEE POPULATION OF CONCERN TO UNHCR IN ASIA AND THE PACIFIC

Figure 17 | Refugee Returnees Trends in Afghanistan (2016-2020)



Despite a fragile security situation in many parts of Afghanistan, along with a range of socio-economic and political challenges, since 2002 more than 5.2 million Afghan refugees have returned to Afghanistan with UNHCR’s assistance. Afghanistan accounts for 90 per cent of all voluntary returns in the region over a 7-year period from 2014. There have been consistent reductions in the numbers of voluntary repatriations since 2016, with a particularly sharp drop from 2016 to 2017. The lowest number of returns was in 2020, due mainly to border closures and other COVID-19 restrictions on travel.



© UNHCR/Roya Heydari

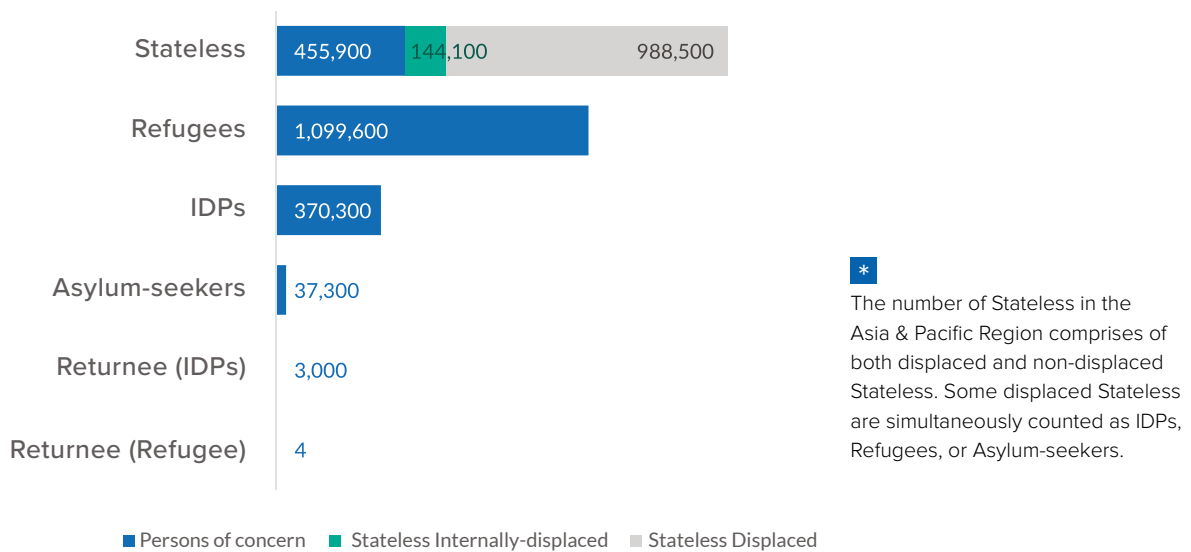
Zargara, a refugee returnee from Pakistan, with her family in their home in Tarakhil district, Kabul, Afghanistan accounts for 90 per cent of all voluntary returns.



# Myanmar Situation

# 3

Figure 18 | 2020 Myanmar Situation by Population Type

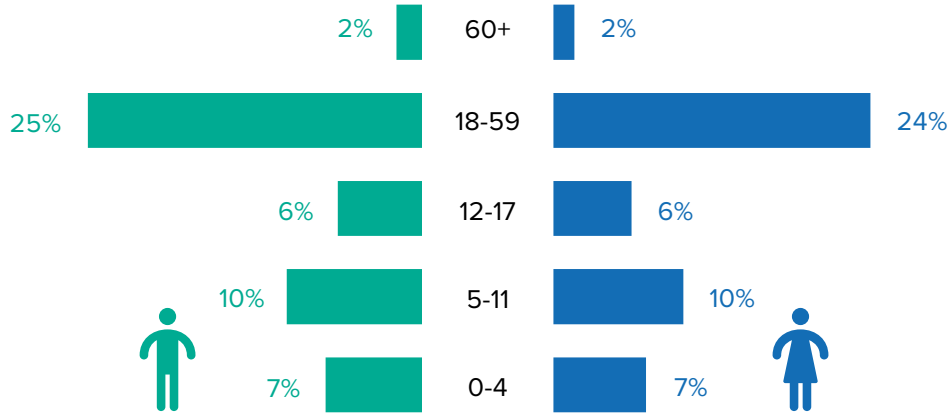


Myanmar is the fifth largest displacement situation globally and the country of origin with the most displaced and non-displaced stateless population in the region. The Myanmar situation refers to forcibly displaced and/or stateless persons originating from Myanmar and in Myanmar, Bangladesh, Malaysia and Thailand. The total reported figure of forcibly displaced and/or stateless persons originating from Myanmar has steadily been rising from 900,000 in 2014 to 1.96 million in 2020. In 2020, of the total 1.96 million persons of concern from Myanmar in Asia and the Pacific region, 56 per cent are refugees, 23 per cent are non-displaced stateless, 19 per cent are IDPs (including displaced stateless) and 2 per cent are asylum-seekers. The refugees and asylum-seekers are primarily hosted in Bangladesh, Malaysia and Thailand. There are also smaller numbers of refugees in India, Indonesia, Australia and other country operations. UNHCR estimates that there are an estimated 600,000 stateless Rohingya remaining in Rakhine state of Myanmar, Of these 600,000 stateless persons 456,000 are also non-displaced Rohingya in Rakhine state and 144,000 are stateless Rohingya who are also internally displaced in the country.

The vast majority of persons of concern from Myanmar were Rohingya, (866,000 in Bangladesh). Rohingya also reside in Malaysia (102,000), India (18,200), Indonesia (900), Nepal (400), Thailand (100). In Thailand, Myanmar refugees residing in the border camps are of various ethnic groups from Myanmar.

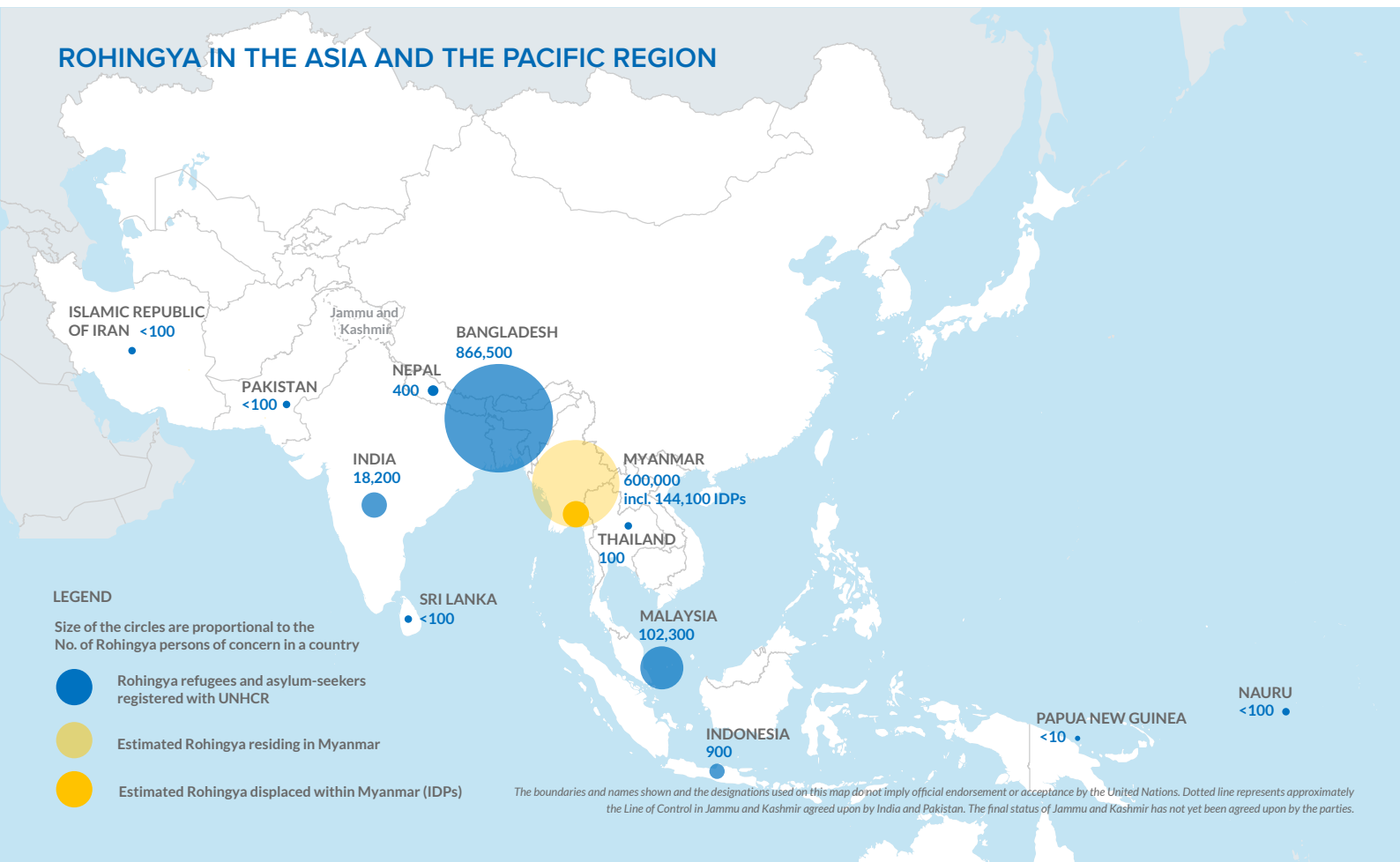
The figure below illustrates Rohingya by population group in the Asia and Pacific region.

Figure 19 | 2020 Demographic Composition of Displaced Myanmar (stateless and non-stateless)



The above figure illustrated the demographic breakdown of displaced Myanmar persons of concern, primarily of refugees and asylum-seekers from Myanmar in neighboring countries where detailed demographic information is available. Detailed demographic information is not currently available for stateless and internally displaced persons of concern in Myanmar and not represented in the figure above. Of the displaced persons of concern from Myanmar, 49 per cent are children under 18 years and three per cent are elderly aged 60 years and above.

While the demographics of the Rohingya populations in Bangladesh, India and Nepal are broadly comparable, with equal proportions of males and females, in Malaysia 80 per cent of adult registered Rohingya are male, and the proportion of children (25 per cent) is much lower.





© UNHCR/Kamrul Hasan

Rofiqua Begum, a Rohingya refugee living in Cox's Bazar, Bangladesh.



# Afghanistan Situation

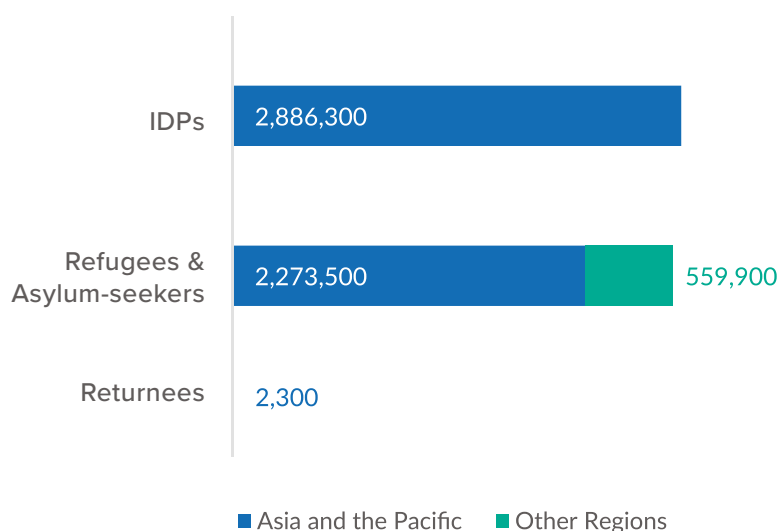
# 4



© UNHCR/Claire Thomas

An elderly Afghan man at an ICRC orthopaedic centre in Kabul, Afghanistan.

Figure 20 | 2020 Afghanistan Situation by Population Type



Afghanistan continues to be the largest country of origin in the region and the third largest displacement situation globally after Syria and Venezuela. The Afghan situation refers to the circumstances of forcibly displaced Afghans and Afghan returnees in the region, predominantly in the South-West Asia sub-region. In 2020, there were 5.8 million forcibly displaced Afghans and Afghan returnees globally – 89 per cent (5.2million) in the South-West Asia region, 10 per cent (557,000) in Europe and 2 per cent (53,000) in other parts of the world. Of the 5.2 million forcibly displaced Afghans and Afghan returnees in Asia and the Pacific region, 2.3 million are refugees, 2.9 million are conflict displaced IDPs and 83,000 are others of concern (refugee returnees from 2017-2019 still assisted by UNHCR). 9 per cent of Afghans are living in camps, primarily in refugee villages in Pakistan while most Afghan refugees and displaced reside in urban, or peri-urban areas of Iran and Pakistan or in non-camp accommodation in Afghanistan.

## Refugees

Of the 5.2 million forcibly displaced Afghans and Afghan returnees in the region, 1.4 million are refugees/asylum-seekers with Proof of Registration (PoR) card holders in Pakistan who are provided with temporary legal stay and freedom of movement. An additional 780,000 are Amayesh card holders in Iran who are granted the right to temporarily reside within the specific province in Iran where they are registered on an annual basis. In addition to these 5.2 million registered Afghans in Pakistan and Iran, there are also a large number of undocumented Afghans and Afghans holding temporary documentation in both Iran and Pakistan. In Iran it is estimated that there are 1.5 – 2 million undocumented Afghans and 450,000 Afghans with Iranian visas. Pakistan hosts an estimated 500,000 undocumented Afghans. There are also a considerable number of Afghan refugees and asylum-seekers in Germany (181,000) and Turkey (129,000).



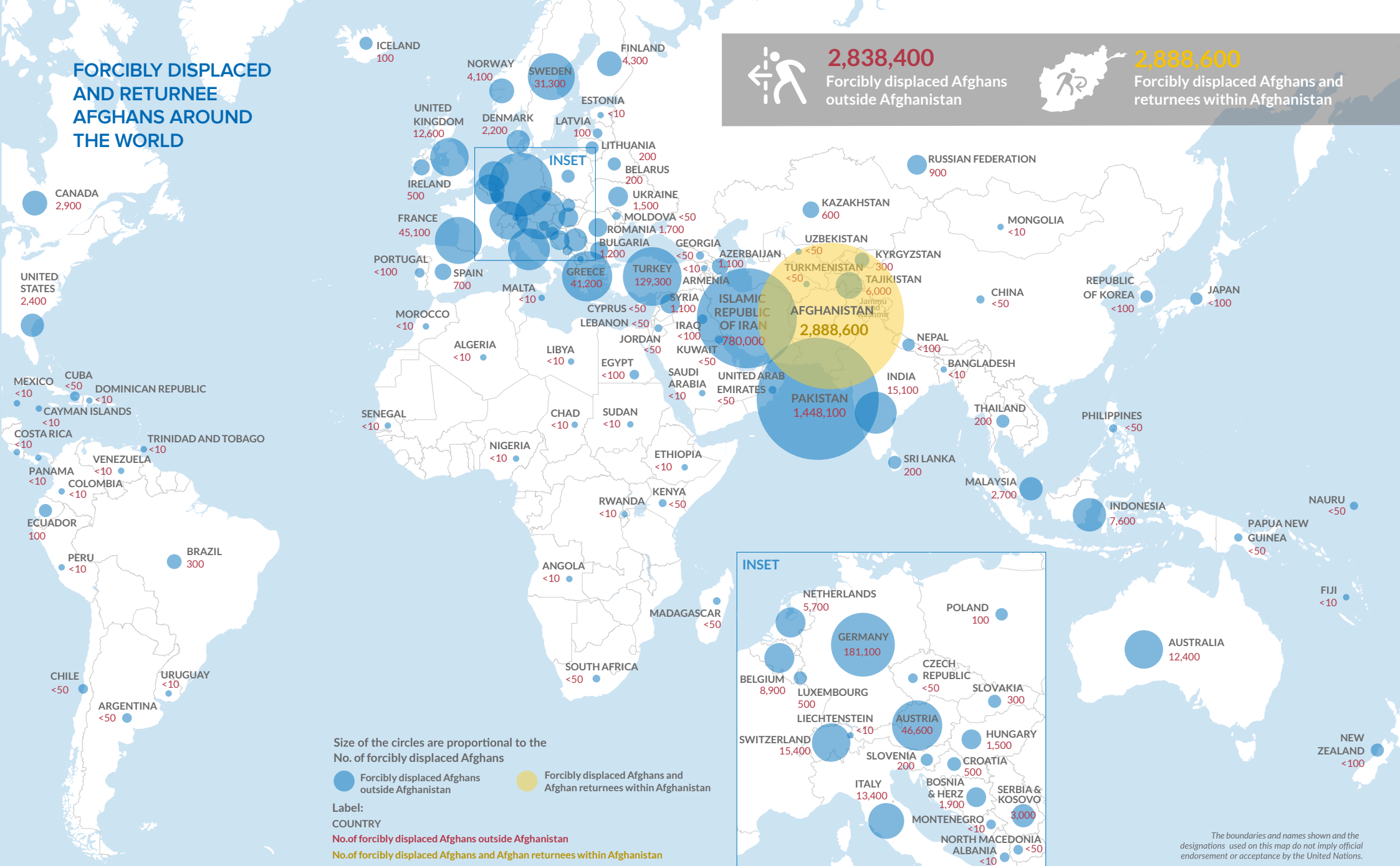
# FORCIBLY DISPLACED AND RETURNEE AFGHANS AROUND THE WORLD



**2,838,400**  
Forcibly displaced Afghans  
outside Afghanistan

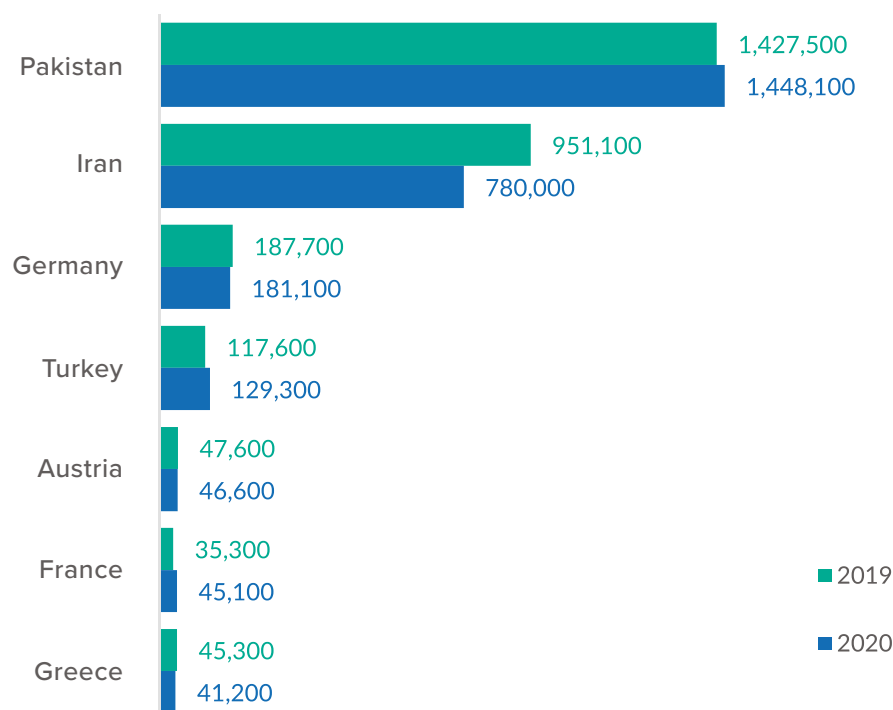


**2,888,600**  
Forcibly displaced Afghans and  
returnees within Afghanistan



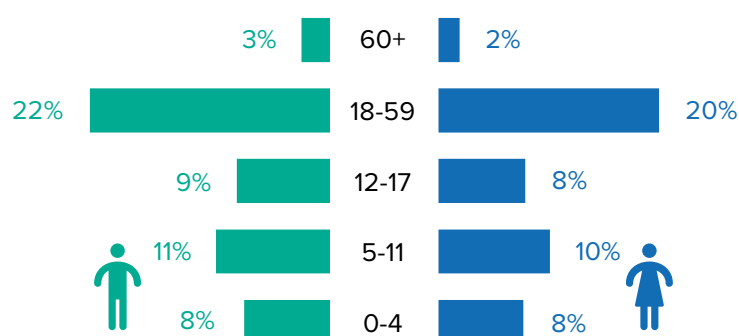
*The boundaries and names shown and the designations used on this map do not imply official endorsement or acceptance by the United Nations.*

Figure 21 | Countries of Asylum of Registered Afghan Refugees and Asylum-seekers



There was a reduction of 18 per cent due to updated figures received from the Government of the Islamic Republic of Iran, which reported a decrease of some 171,100 refugees, mostly among Afghans. Even though Germany had a reduction of 4 per cent from previous year it remains the leading country of asylum outside of Asia and the Pacific. Other major changes of Afghans refugee and asylum-seekers include a 10 per cent increase in Turkey, 9 per cent reduction in Greece, and a huge increase of 28 per cent in France surpassing Greece this year.

Figure 22 | 2020 Demographic Composition of Registered Afghans Displaced in Asia and the Pacific



Data disaggregation based on characteristics such as age and sex contribute to a better understanding of the population and more effective planning of solutions. Due to the lack of demographic breakdown, the Iranian data is excluded from the demographic analysis of the Afghan situation. More than half of the population (53 per cent) are children and 48 per cent of the total population are females. The elderly (60 years and above) comprise only 4 per cent of total population. Among Afghan refugees in Pakistan, there is a lower proportion of children (44 per cent) compared with the other groups in Afghanistan and a lower percentage of females (46 per cent) in the population.

# ASIA & THE PACIFIC REGIONAL POPULATION TRENDS ANALYSIS

FORCED  
DISPLACEMENT  
2020



**UNHCR Regional Bureau for Asia and the Pacific**  
18th Floor, Capital Tower, All Seasons Place,  
87/1 Wireless Road 10330  
Bangkok, Thailand

[www.unhcr.org/asia](http://www.unhcr.org/asia)

Front cover image: © UNHCR/Jiro Ose