

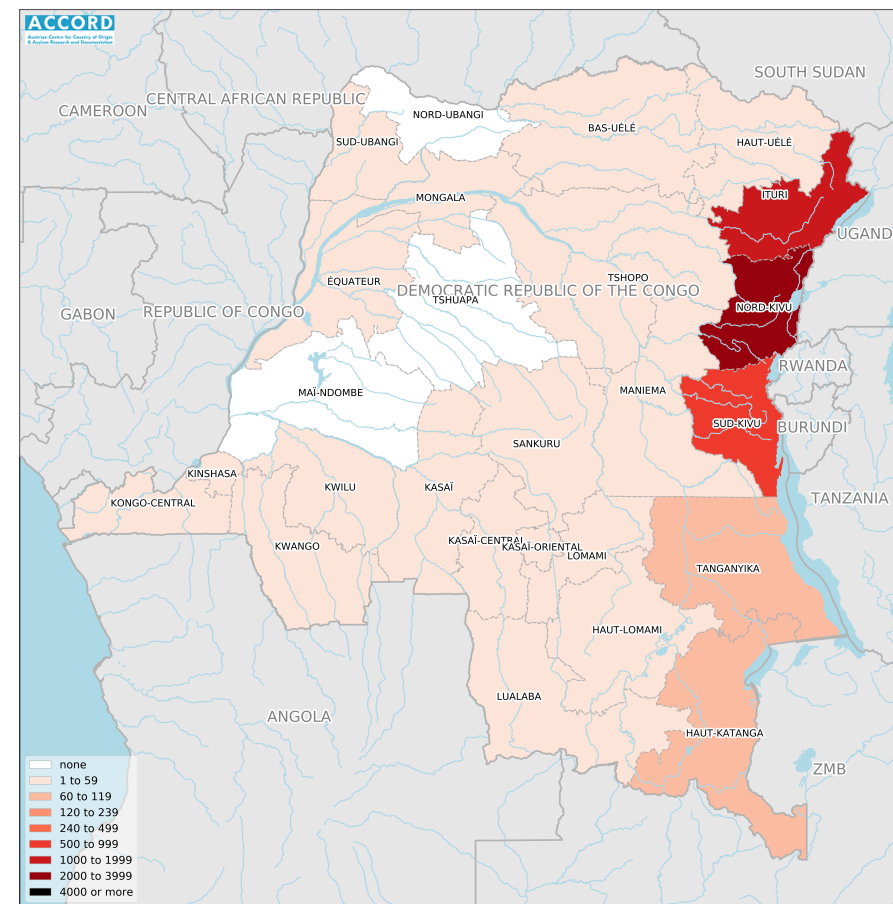
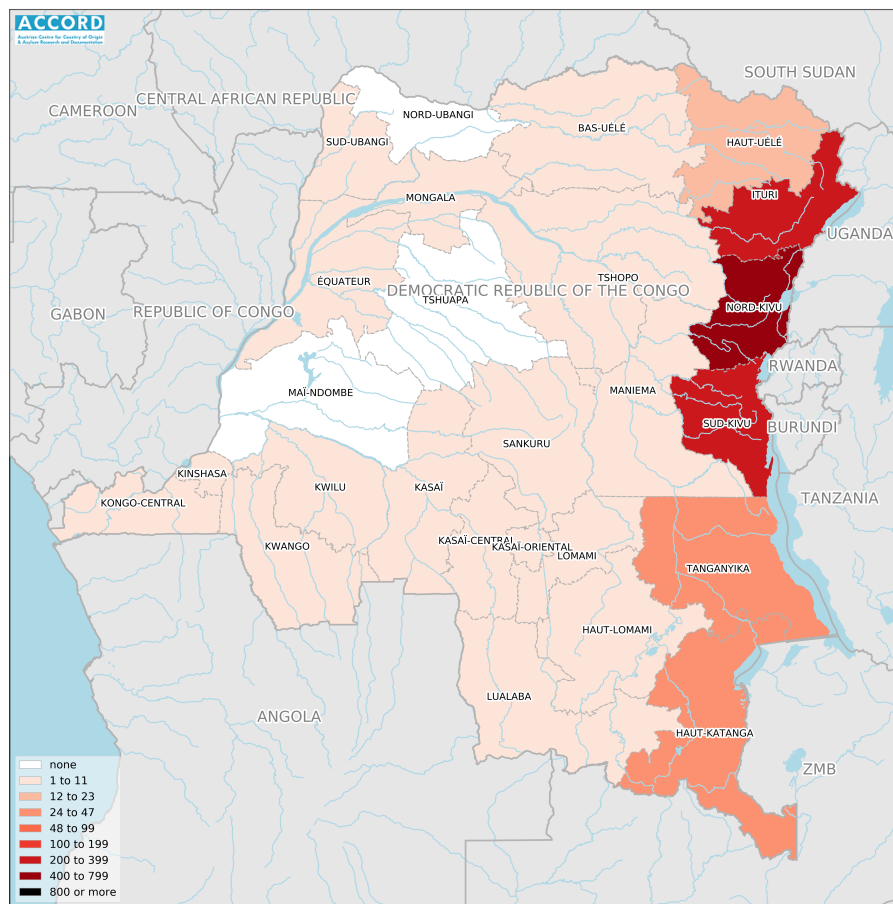
# DEMOCRATIC REPUBLIC OF CONGO, YEAR 2020:

Update on incidents according to the Armed Conflict Location & Event Data Project (ACLED)

compiled by ACCORD, 25 March 2021

## Number of reported incidents with at least one fatality

## Number of reported fatalities



National borders: [GADM, 6 May 2018b](#); administrative divisions: [GADM, 6 May 2018a](#); incident data: [ACLED, 12 March 2021](#); coastlines and inland waters: [Smith and Wessel, 1 May 2015](#)

## Contents

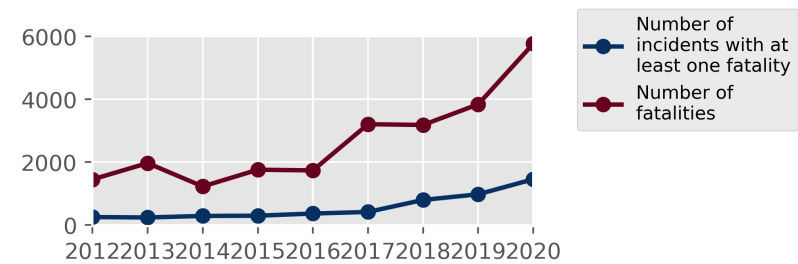
Number of reported fatalities	1
Number of reported incidents with at least one fatality	1
Conflict incidents by category	2
Development of conflict incidents from 2012 to 2020	2
Methodology	3
Conflict incidents per province	4
Localization of conflict incidents	4
Disclaimer	8

## Conflict incidents by category

Category	Number of incidents	Number of incidents with at least one fatality	Number of fatalities
Battles	1186	680	3254
Violence against civilians	1143	649	2319
Protests	492	3	3
Riots	337	125	191
Strategic developments	230	1	4
Explosions / Remote violence	5	1	1
<b>Total</b>	<b>3393</b>	<b>1459</b>	<b>5772</b>

This table is based on data from ACLED (datasets used: [ACLED, 12 March 2021](#)).

## Development of conflict incidents from 2012 to 2020



This graph is based on data from ACLED (datasets used: [ACLED, 12 March 2021](#)).

## Methodology

The data used in this report was collected by the Armed Conflict Location & Event Data Project (ACLED). ACLED collects data on reported conflict events in selected African and Asian countries, Democratic Republic of Congo being among them. ACLED researchers collect event data from a variety of sources and code them by date, location, agent, and event type.

Most of the data collected by ACLED is gathered based on publicly available, secondary reports. It may therefore underestimate the volume of events. Fatality data particularly is vulnerable to bias and inaccurate reporting, and ACLED states to use the most conservative estimate available. ACLED uses the reports' context to estimate fatalities for events with reported fatalities for which the exact number is unknown ("10" for plural fatalities, "100" if "hundreds" are mentioned, etc.). For further details on ACLED and for the full data, see [www.acleddata.com](http://www.acleddata.com) and [Raleigh, Linke, Hegre, and Karlsen, 2010](#).

Based on this data, the Austrian Centre for Country of Origin & Asylum Research and Documentation (ACCORD) compiles updates on conflict incidents and publishes them on [ecoi.net](http://ecoi.net) to offer another access point to the ACLED datasets.

It is advised to employ extreme caution when using fatality numbers.

Assessments of the security situation should not be based solely on quantitative analysis of event data.

Geographic map data is primarily based on GADM, complemented with other sources if necessary. Incidents are mapped to GADM provinces using the provinces in ACLED data. Province names and borders may differ between ACLED and GADM. Incidents that could not be located are ignored. The numbers included in this overview might therefore differ from the original ACLED data. ACLED uses varying degrees of geographic precision for the individual incidents, depending

on what level of detail is reported. Thus, towns may represent the wider region in which an incident occurred, or the provincial capital may be used if only the province is known. Erroneous location data, especially due to identical place names, cannot be fully excluded.

Incidents comprise the following categories: battles, headquarters or bases established, non-violent strategic activities, riots/protests, violence against civilians, non-violent transfer of territory, remote violence. For details on these categories, please see

- ACLED – Armed Conflict Location & Event Data Project: Armed Conflict Location and Event Data Project (ACLED) Codebook (2019), 10 April 2019a [https://www.acleddata.com/wp-content/uploads/dlm\\_uploads/2017/10/ACLED\\_Codebook\\_2019FINAL\\_pbl.pdf](https://www.acleddata.com/wp-content/uploads/dlm_uploads/2017/10/ACLED_Codebook_2019FINAL_pbl.pdf)
- ACLED – Armed Conflict Location & Event Data Project: Armed Conflict Location and Event Data Project (ACLED) User Quick Guide, April 2019b [https://www.acleddata.com/wp-content/uploads/dlm\\_uploads/2019/04/General-User-Guide\\_FINAL.pdf](https://www.acleddata.com/wp-content/uploads/dlm_uploads/2019/04/General-User-Guide_FINAL.pdf)
- ACLED – Armed Conflict Location & Event Data Project: FAQs: ACLED Fatality Methodology, 27 January 2020 <https://www.acleddata.com/download/17979/>

## Conflict incidents per province

Province	Number of incidents	Number of incidents with fatalities	Number of fatalities
Bas-Uélé	50	8	14
Haut-Katanga	64	24	81
Haut-Lomami	3	1	1
Haut-Uélé	54	12	17
Ituri	507	307	1766
Kasaï	20	2	8
Kasaï-Central	39	3	3
Kasaï-Oriental	42	5	14
Kinshasa	84	10	24
Kongo-Central	29	11	48
Kwango	3	1	1
Kwilu	15	1	1
Lomami	11	2	3
Lualaba	12	5	7
Maniema	44	10	30
Mai-Ndombe	3	0	0
Mongala	2	1	2
Nord-Kivu	1464	757	2907
Nord-Ubangi	3	0	0
Sankuru	7	1	1

Province	Number of incidents	Number of incidents with fatalities	Number of fatalities
Sud-Kivu	792	263	756
Sud-Ubangi	14	2	4
Tanganyika	92	27	73
Tshopo	26	4	9
Équateur	13	2	2

## Localization of conflict incidents

**Note:** The following list is an overview of the incident data included in the ACLED dataset. More details are available in the actual dataset (date, location data, event type, involved actors, information sources, etc.). The data's precision varies among the incidents: a town may represent a region, or the provincial capital may be used if the precise location of an incident is unknown. In the following list, the names of event locations are taken from ACLED, while the administrative region names are taken from GADM data which serves as the basis for the maps above.

In **Bas-Uélé**, 50 incidents killing 14 people were reported. The following locations were among the affected: **Adama, Ango, Badale, Bakpolo, Banda, Bili, Bondo, Dakwa, Digba, Epi, Gwane, Kapilo, Kpokpo, Mabilia, Makpolo, Manguruti, Manziga, Mboli, Monga, Mugalie, Nambagu, Ngbede Mine, Pasi, Poko, Samungu, Zangabai.**

In **Haut-Katanga**, 64 incidents killing 81 people were reported. The following locations were among the affected: **Kalongo, Kasumbalesa, Kipushi, Kitanda, Likasi, Lubumbashi, Lwambo, Pweto.**

In **Haut-Lomami**, 3 incidents killing 1 person were reported. The following

locations were among the affected: **Kamina, Lake Upemba.**

In **Haut-Uélé**, 54 incidents killing 17 people were reported. The following locations were among the affected: **Bambangana, Bayote, Diagbe, Dikpoto, Dungu, Durba, Duru, Faradje, Gungu, Isiro, Kaka II, Kana, Kapili, Kpaika, Lika, Limai, Manguliti, Mangwa, Mbamu, Mbengu, Mbiangu, Nambia, Naparka, Napopo, Ngilima, Niangara, Tapili, Togo, Watsa, Zigbi.**

In **Ituri**, 507 incidents killing 1766 people were reported. The following locations were among the affected: **Adusa, Apinaka, Ariwara, Aru, Aveba, Badengaido, Bafwabango, Bambu, Banacongo, Bandisende, Banditongo, Bedu-Ezekere, Belu, Berunda, Biakato, Blukwa, Boga, Bogoro, Buba, Budu, Bukiringi, Bule, Bunia, Bunzenzele, Bwakadi, Cango, Darlas, Dele, Dhera, Djaiba, Djalasiga, Djatsi, Djugu, Drodoro, Dyaro, Fataki, Fichama, Gbula, Geti, Gina, Gobu, Iga Barriere, Ingbokolo, Irumu, Ituri, Jakanja, Jiba, Jingute Kpango, Jitso, Kabakaba, Kabarole, Kagaba, Kalo, Kamatsi, Kambutso, Kandoi, Kasenyi, Kasingwa, Kaya, Kengelu, Kengezi, Kilo, Kobu, Koli, Komanda, Kombokabo, Kotoni, Kpandroma, Largu, Laudjo, Lenge, Libi, Linga, Logo, Lopa, Lukaya, Mahagi, Makeke, Makoko, Mambasa, Mambisa, Mandefu, Mandro, Mandumbi, Mangiva, Mapembe, Marabo, Maze, Mbogu, Miala, Mitego, Mngla, Mongbwalu, Mudzipela, Musuku, Mutshanga, Muvaramu, Mwangwa, Ndalia, Ndalya, Ngida, Nioka, Nizi, Nyakunde, Odru, Ofaye, Okapi Wildlife Reserve, Pede, Penie, Pimbo, Rodo, Rumu, Saliboko, Samboko, Samboko Centre, Sanduku, Sililo, Soleniama, Songamoya, Tara, Tchomia, Teturi, Tondoli, Tshabi, Tshadhu, Tsoro, Walu, Yombiabo, Zekere, Ziga, Zumbe.**

In **Kasai**, 20 incidents killing 8 people were reported. The following locations were among the affected: **Kabuakala, Kakenge, Kamako, Kamonia, Ndjoko-Punda, Tshikapa.**

In **Kasai-Central**, 39 incidents killing 3 people were reported. The following locations were among the affected: **Bena-Leka, Kananga, Luiza, Mashala,**

**Tshikula.**

In **Kasai-Oriental**, 42 incidents killing 14 people were reported. The following locations were among the affected: **Bena Tshiloba, Kabeya-Kamwanga, Katanda, Mbuji Mayi, Miabi, Tshilenge.**

In **Kinshasa**, 84 incidents killing 24 people were reported. The following locations were among the affected: **Kinshasa, Kinshasa - Limete, Kinshasa - Ngaliema.**

In **Kongo-Central**, 29 incidents killing 48 people were reported. The following locations were among the affected: **Boma, Kimpese, Kinzau Vuete, Kisantu, Lukula, Matadi, Mbanza Ngungu, Nkamuna, Songololo, Tshela.**

In **Kwango**, 3 incidents killing 1 person were reported. The following location was among the affected: **Kenge.**

In **Kwilu**, 15 incidents killing 1 person were reported. The following locations were among the affected: **Bandundu, Bonkulu, Gungu, Kikwit, Masamuna.**

In **Lomami**, 11 incidents killing 3 people were reported. The following locations were among the affected: **Dipumba, Kabinda, Kakinda, Lubao, Makola, Mwene Ditu.**

In **Lualaba**, 12 incidents killing 7 people were reported. The following locations were among the affected: **Fungurume, Kakanda, Kakula, Kalundu, Kolwezi, Musonoi.**

In **Maniema**, 44 incidents killing 30 people were reported. The following locations were among the affected: **Kabambare, Kailo, Kalima, Kindu, Lukolo, Lusangi, Mutuka, Salamabila, Wamaza.**

In **Mai-Ndombe**, 3 incidents killing 0 people were reported. The following

locations were among the affected: **Inongo, Yumbi.**

In **Mongala**, 2 incidents killing 2 people were reported. The following locations were among the affected: **Binga, Bumba.**

In **Nord-Kivu**, 1464 incidents killing 2907 people were reported. The following locations were among the affected: **Alimbongo, Angoa, Anzuma, Baeti, Bahatsa, Bambu, Bambuba Kisiki, Bango, Basisale, Baswagha, Beni, Biherwa, Bihitri, Birambizo, Birega, Birihi, Biruma, Birwa, Bishusha, Bitembe, Bitonga, Bitongi, Boikene, Buabo, Bugamba, Buganza, Bugembwe, Bugina, Bugusa, Bukombo, Bukucha, Bukumbirwa, Bukutsha, Bulambo, Bulaya, Bulema, Bulende, Buleusa, Bulima, Bulinde, Bulindi, Bulongo, Bunagana, Bunyatenge, Bunyeri, Bunyuka, Buramba, Burambo, Burungu, Busanza, Busenene, Bushenge, Bushimba, Bushimoo, Bushoby, Butaro, Butembo, Butuhe, Bwaland, Bwendero, Bwenderu, Bweru, Bweteta, Bweza, Bwito, Cantine, Chanika, Cherere, Chito, Domaine, Egombo, Eringeti, Fatua, Gashavu, Gbado, Gelumbe, Goma, Halungupa, Hembe, Hohe, Ibuga, Ihula, Irango, Isale, Ishola, JTN, Jomba, Kabarose, Kabaya, Kabizo, Kabumba, Kadou, Kagando, Kagezi, Kahira, Kahumba, Kainama II & III, Kako, Kakomero, Kakondo, Kakuka I, Kalambairo, Kalembe, Kalembera, Kalengera, Kalingati, Kalonge, Kalungu, Kalunguta, Kamango, Kamatalyo, Kambau, Kambi Ya Yua, Kamudoka, Kamungu, Kamuroro, Kanage, Kaniro, Kanoka, Kanune, Kanyabayonga, Kanyamitango, Kanyatsi, Kanyesanane, Kanyeshongo, Kanyihunga Mambira, Kanzanza, Kanzenze, Karambi, Karuba, Karumu, Kaseghe, Kaseke, Kasese, Kasesero, Kashali, Kashanje, Kashebere, Kashebere-Kibua Road, Kashuga, Kasiki, Kasindi, Katale, Kataro, Kateku, Katoro, Katota, Katovu, Katoyi, Katsiru, Katwiguru II, Kauli, Kaunchu, Kausa, Kavuma, Kavumu, Kayna, Kibande, Kibarizo, Kibati, Kibende, Kibeneti, Kibirizi, Kibua, Kibumba, Kibuye, Kibwe, Kididiwe, Kifuruka, Kigabiro, Kigezi, Kigoma, Kihimba, Kijabura, Kikingi, Kikingo, Kikuku, Kikuvo, Kilambo, Kimaka, Kimoka, Kingamubiri, Kingarabe, Kingarame, Kinumbi, Kinyambahore, Kinyandoni, Kinyandonyi, Kinyatsi, Kinyumba, Kipese, Kirima,**

**Kiringa, Kirumba, Kirumbu, Kiseguru, Kisharo, Kisharu, Kishee, Kisigari, Kisiki, Kisikivi, Kisima, Kisone, Kisui, Kitaraga, Kitarama, Kitchanga, Kitobindo, Kitobo, Kitoho, Kitumba, Kituruku, Kivukulu, Kivuma, Kivunano, Kivuye, Kiwanja, Kiyeye, Kizimba, Kokola I, Kpolowu, Kyahala, Kyanika, Kyavinyonge, Kyondo, Lake Edward, Linzo Sisene I, Lisasa, Loashi, Lomo, Lubena, Lubero, Luhanga, Luhotu, Lukuka, Lukweti, Lume, Luofu, Lushebere, Luve, Lwama, Lwibo, Mabalako, Maboya, Mabuo, Magheria, Magiso, Mahanga, Mahura, Mahya, Majengo, Makumbo, Malambo, Maleki, Malemo, Malimingi, Mambida, Mamove, Mamunjoma, Mangboko, Mangina, Manguredjpa, Manzati, Mapobu, Mapou, Masala, Masambo, Masenge, Mashango, Mashiga, Masiki Kalonge, Masisi, Masiye, Masumo, Mataba, Matebe, Mateke, Matenge, Matiba, Mause, Mavivi, Mayangose, Mayimoya, Mbau, Mbilali, Mbughavinywa, Mbuhi-Pilote, Mbawinwa, Miandja, Mianga, Mianja, Miliki, Minjenje, Mirangi, Miriki, Misinga, Misoke, Mitero, Mokoto, Mpati, Mpeti, Mpofi, Mubambiro, Mubi, Mugando, Mughalika, Mugomba, Muhangi, Muhemba, Muhunguma, Muira, Mukaka, Mukohwa, Mukoku, Mulamba, Muleha, Mulimbi, Mulobia, Muloby, Mumo, Munigi, Munoli, Mupfo, Muramba, Murambi, Mushaki, Mushweshwe, Musienene, Musindi, Mutanda, Mutego, Mutendero, Mutido, Mutobo, Mutoha, Mutongo, Mutsimula, Mutwanga, Mwalika, Mwenda, Mweso, Nakabumbi, Nchankere, Ndeko, Nduko, Ngadi, Ngangi II, Ngesha, Ngingwe, Ngoi, Ngoroba, Ngoyi, Ngugo, Ngundu, Ngungu, Ngwenda, Nkiko, Nkingwa, Nobili, Ntoto, Nyabanira, Nyabihoko, Nyabikeri, Nyabili, Nyabiondo, Nyabirehe, Nyakakoma, Nyamilima, Nyamitwitwi, Nyange, Nyanzale, Nyiragongo, Nzai, Nzakia, Nzenga, Oicha, Pamoli, Peti, Pinga, Rama, Remeka, Robonga, Ronga, Rubare, Rubaya, Rubeha, Rubona, Rubumba, Rugabano, Rugarama, Rugari, Rugetsi, Ruginga, Rugoma, Rujebesha, Rukaza, Rumangabo, Runombe, Rurama, Rusaka 5, Rusamambu, Rusayo, Rusekera, Rushege, Rushiye, Rushoga, Rutiba, Rutshuru, Rutsiro II, Ruvumu, Ruwenzori, Rwahambi, Rwenzori, Rwindi, Sake, Sarambwe, Shango, Shoa, Sikwaila, Singilili, Singyambale, Sisa, Swagara, Tchanitchani, Tenambo, Tongo, Tungudu, Utunda, Vingyo, Visiki, Vitshumbi, Vuhira, Vuhovi, Vurondo, Vuyinga, Walikale, Watalinga, Zacharia.**

In **Nord-Ubangi**, 3 incidents killing 0 people were reported. The following location was among the affected: **Gbadolite**.

In **Sankuru**, 7 incidents killing 1 person were reported. The following locations were among the affected: **Bene Dibele, Lodja, Lubefu, Lusambo, Tshumbe**.

In **Sud-Kivu**, 792 incidents killing 756 people were reported. The following locations were among the affected: **Ake, Akongye, Amba, Bagira, Baraka, Bidegu I, Bideka, Bigaragara, Bijombo, Bikenge, Bilalombili, Biranga, Birava, Bisisi, Biziba, Bubamba, Bubare, Buhesi, Bukavu, Bulenga, Bunyakiri, Burhale, Bushumba, Bushushu, Bushwira, Bwegera, Bwesho, Byalere, Cakira, Canzovu, Chaminunu, Chibinda, Chifuko, Chiriba, Cibanda, Cibati, Cifunzi, Cimpwiji, Civanga, Depot, Dombwe, Fendula, Fizi, Fumya, Gombaniri, Ibumba, Idunga, Ilakala, Irambira, Irambo, Ishenge, Ishungu, Izirangabo, Kabamba, Kabara, Kabare, Kabere, Kabimba, Kabingo, Kabogo, Kabondozi, Kabumbe, Kabunambo, Kabushwa, Kabwiba, Kafulo, Kagoga, Kagogo, Kagunga, Kagurube, Kaha, Kahanda, Kahembarhi, Kahololo, Kahuna, Kahungwe, Kahuzi-Biega National Park (HQ), Kahwela, Kahwizi, Kakamba, Kakenge, Kakoga, Kalabula, Kalamba, Kalangi, Kalehe, Kalinga, Kalingi, Kalonda, Kalonge, Kalundu, Kalunga, Kalungu, Kalungwe, Kamanyola, Kamatembele, Kamba, Kambembe, Kamituga, Kamombo, Kamonyi, Kanga, Kangwe, Kanigo, Kantombi, Kaolo, Karamba, Kasebe, Kasenga, Kashaanja, Kasheke, Kashewe, Kasika, Kasimba, Katana, Katanga, Kateja, Katekama, Katobo, Katogota, Katongo, Kavimvira, Kavumu, Kibanda, Kibanga, Kibilu, Kidodobo, Kigoma, Kigongo, Kihande, Kikonde, Kilembwe, Kiliba, Kimaka, Kipulu, Kipupu, Kiringye, Kirungu, Kiseke, Kiseku, Kisenya, Kishagala, Kisozi, Kabumenge, Kitasha, Kitavi, Kitemesho, Kitumba, Kivumu, Kiziba, Kukwe, Kusisa, Kuwimiko, Laylay, Lemera, Lubarika, Luberizi, Lubichako, Lubimbe, Lubinga, Lubondja, Lugendo, Lukala, Lulimba, Lumbishi, Lungungu, Luutu, Luvungi, Lweba, Lwemba, Lwigi, Magunga, Makenzi, Makobola, Makyaka, Malimba, Malinde, Malingumu, Manamba, Masango, Matala, Mbelekelo, Mbobero, Mboko, Mbundamo, Mihanda, Mihongwa, Mikenge, Minembwe,**

**Minova, Miruwa, Misha, Misisi, Mitala, Mitamba, Miti, Mkyengya, Mongemonge, Mudaka, Mudugudu, Mugarore, Mukolochi, Mukwezi, Mukwija, Mule, Mulenge, Mulima, Mulongwe, Mumosho, Munanira, Munene, Muranvya, Murunga, Mushinga, Mushingi, Mushweswe, Mutale, Mutambala, Mutarule, Muuzi, Mwaba, Mwayenga, Mwenga, Myowe, Nabombe, Nakiele, Namisha, Namukangaza, Ndende, Ndunda, Nemba, Ngalula, Ngendo, Ngolombe, Nguliro, Nguma, Niombe, Ntalangwa, Numbi, Nyabaleke, Nyabibwe, Nyakahanda, Nyalubemba, Nyamasasa, Nyambembe, Nyamoma, Nyamunindi, Nyange, Nyangezi, Nyangi Milimba, Nyatesa, Nyombe, Panzi, Ramba, Rubibi, Rubuga, Rudefwe, Ruhuha, Rukobero, Rukuka, Rulimbi, Runingo, Runingu, Runywera, Rutanga, Rutemba, Rutigita, Rwemba, Sange, Sango, Sebele, Shabunda, Shanje, Suiza, Swima, Tchamilemba, Timbyangoma, Tubuke, Tukumbe, Tuwetuwe, Ubwari Peninsula, Uvira, Walungu, Ziralo.**

In **Sud-Ubangi**, 14 incidents killing 4 people were reported. The following locations were among the affected: **Gemena, Likimi, Zongo**.

In **Tanganyika**, 92 incidents killing 73 people were reported. The following locations were among the affected: **Ankoro, Bakalanga-Tengo, Bendera, Benze, Kabalo, Kakulu, Kalemie, Kankwala, Kashege, Kayanza, Kongolo, Konongo, Lengwe, Lubasha, Luinda, Luizi, Mahole, Manono, Mapanda, Masamba, Mazonde, Mbulula, Moba, Moliro, Muhuya, Mukumbi, Munena, Musebe, Mwanza I, Nsela, Nyunzu, Pende, Ponda, Senga, Tembwe, Zongwe.**

In **Tshopo**, 26 incidents killing 9 people were reported. The following locations were among the affected: **Basoko, Bayanguma, Isangi, Kisangani, Singa, Tshopo, Yandjali, Yofeko.**

In **Équateur**, 13 incidents killing 2 people were reported. The following locations were among the affected: **Bolenge, Bolomba, Mbandaka.**

## Sources

- ACLED – Armed Conflict Location & Event Data Project: Data export (12 March 2021), 12 March 2021  
<https://www.acleddata.com/data-export-tool/>
- GADM – Global Administrative Areas: gadm36\_COD\_shp.zip, Version 3.6, 6 May 2018a  
[http://biogeo.ucdavis.edu/data/gadm3.6/shp/gadm36\\_COD\\_shp.zip](http://biogeo.ucdavis.edu/data/gadm3.6/shp/gadm36_COD_shp.zip)
- GADM – Global Administrative Areas: gadm36\_levels.shp, Version 3.6, 6 May 2018b  
[http://biogeo.ucdavis.edu/data/gadm3.6/gadm36\\_levels.shp.zip](http://biogeo.ucdavis.edu/data/gadm3.6/gadm36_levels.shp.zip)
- Raleigh, Clionadh; Linke, Andrew; Hegre, Håvard, and Karlsen, Joakim: “Introducing ACLED-Armed Conflict Location and Event Data”, in: Journal of Peace Research (47(5) 2010), pp. 651–660  
<http://jpr.sagepub.com/content/47/5/651.full.pdf+html>
- Smith, Walter H. F. and Wessel, Paul: Global Self-consistent Hierarchical High-resolution Geography (GSHHG), Version 2.3.4, 1 May 2015  
<https://www.ngdc.noaa.gov/mgg/shorelines/data/gshhg/latest/>

## Disclaimer

Event data may be revised or complemented in future updates. Updates in ACLED’s datasets will not necessarily be reflected in ACCORD’s reports if the update occurs close to or after the latter’s publication. Changes in the sources used by ACLED to collect incident data might affect the comparability of data over time. For more information on ACLED’s methodology, please see [www.acleddata.com/resources/methodology/](http://www.acleddata.com/resources/methodology/). For more information on ACCORD’s products based on the data,

please see the [ecoi.net blog posts tagged with “ACLED”](#). The lack of information on an event in this report does not permit the inference that it did not take place. The boundaries and names displayed do not imply endorsement or acceptance by the Austrian Red Cross.

## Cite as

- ACCORD – Austrian Centre for Country of Origin & Asylum Research and Documentation: Democratic Republic of Congo, year 2020: Update on incidents according to the Armed Conflict Location & Event Data Project (ACLED), 6 May 2021