

KEY FIGURES

 → **2,118,550**

INTERNALLY DISPLACED PERSONS (IDPs)

in Northeast , 92% due to insurgency, 7% communal clashes and 1% natural disaster. 1,801,246 in Borno, Adamawa and Yobe states.

Source: DTM - RXXXIII Aug. 2020.

 → **578,119**

IDPs, 274,275 are in Northwest while 303,844 are in Northcentral

Source: DTM - NCNW RIII Dec. 2019.

 1,714,682

RETURNEES

Cumulative since 2015, 134,000 or 21% are former refugees who returned spontaneously with some passing through IDP situation.

Source: DTM RXXXIII Aug. 2020. Since beginning of 2019 UNHCR has registered **35,692** spontaneous refugee returns.

 **300,111**

NIGERIAN REFUGEES REGISTERED IN CAMEROON, CHAD, AND NIGER

Source: UNHCR Sep. 2020.

 **64,762**

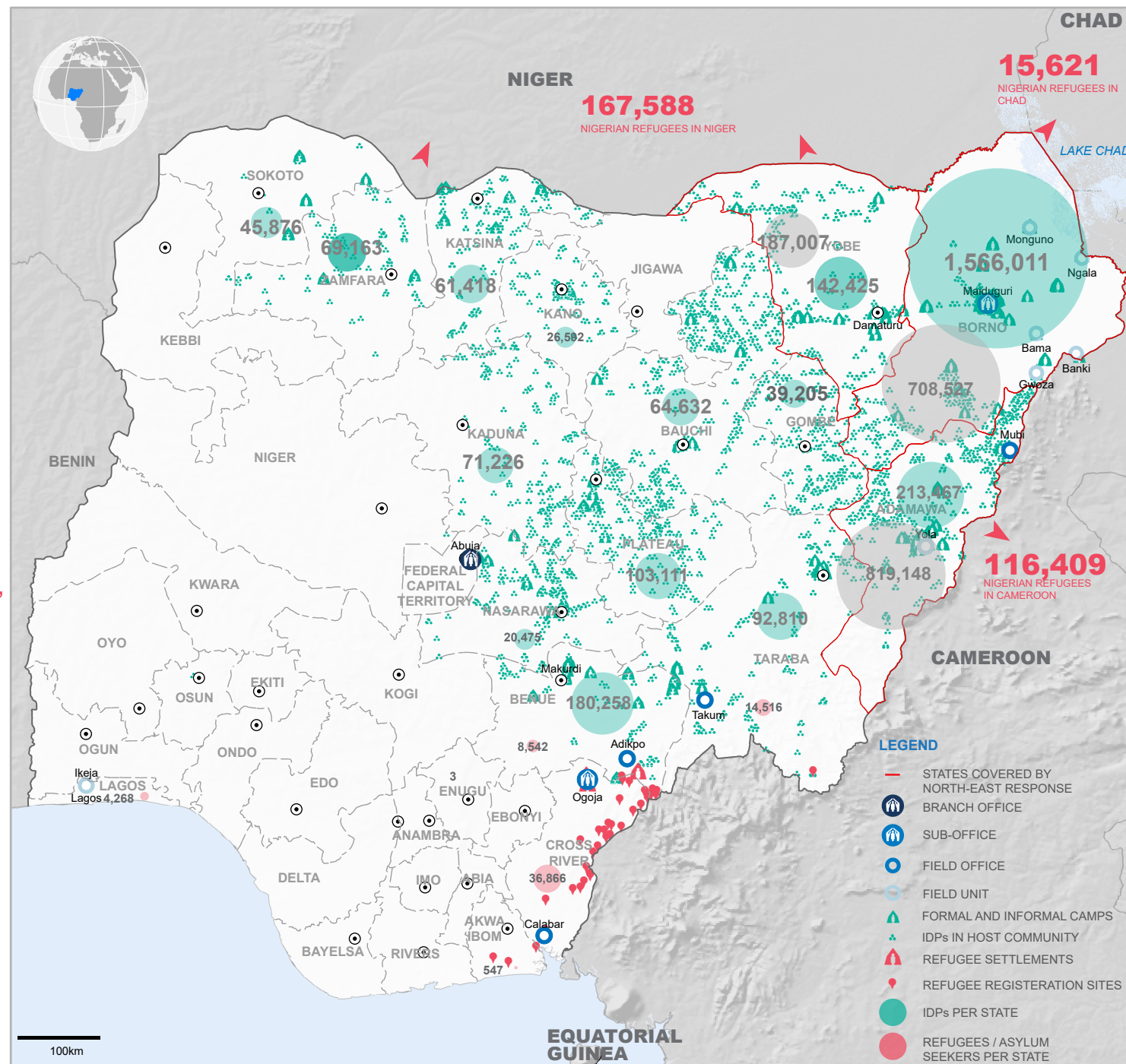
REFUGEES AND ASYLUM SEEKERS REGISTERED IN NIGERIA

Source: UNHCR Sep. 2020.

SITUATION OVERVIEW

The general situation in North-East Nigeria remains largely volatile with incidents of attacks in several Local Government Areas (LGAs) in Borno, Yobe and Adamawa (BAY) States in North-East Nigeria continue to cause displacement and casualties among civilians and persons of concern to UNHCR.

Furthermore Cameroon Refugees affected by the crisis between the government and activists calling for independence of the anglophone region are seeking refuge in Nigeria . The arrival of Cameroonian refugees in Nigeria has since presented a new dimension to the already complex humanitarian situation in Nigeria.



DISCLAIMER: The boundaries and names shown and the designations used on this map do not imply official endorsement or acceptance by the United Nations.

UPDATED: October 2020

SOURCES: UNHCR, IOM DTM, HDX **FEEDBACK:** nigabim@unhcr.org