

KEY FIGURES

 **2,088,124**

INTERNALLY DISPLACED POPULATION

in Northeast states of Borno, Adamawa, Yobe, Taraba, Bauchi and Gombe, 92% due to insurgency, 7% communal clashes and 1% natural disaster. 1,893,375 of the IDPs are in Borno, Adamawa and Yobe states. Source: DTM - RXXXII Jun 2020.

 **578,119**

internally displaced population out of which 274,275 are in Northwest states of Katsina, Zamfara, Kaduna, Sokoto and Kano states while the remaining 303,844 are in Northcentral states of Benue, Plateau and Nassarawa states. Source: DTM -NCNW RIII Dec 2019.

 **1,705,567**

RETURNEES

Returnee figures are cumulative since 2015, out of which 21% (133,000) are former refugees who returned spontaneously with some passing through IDP situation (DTMRXXXII). Since beginning of 2019 UNHCR has registered 27,508 spontaneous refugee returns.

 **299,314**

NIGERIAN REFUGEES REGISTERED IN CAMEROON, CHAD, AND NIGER

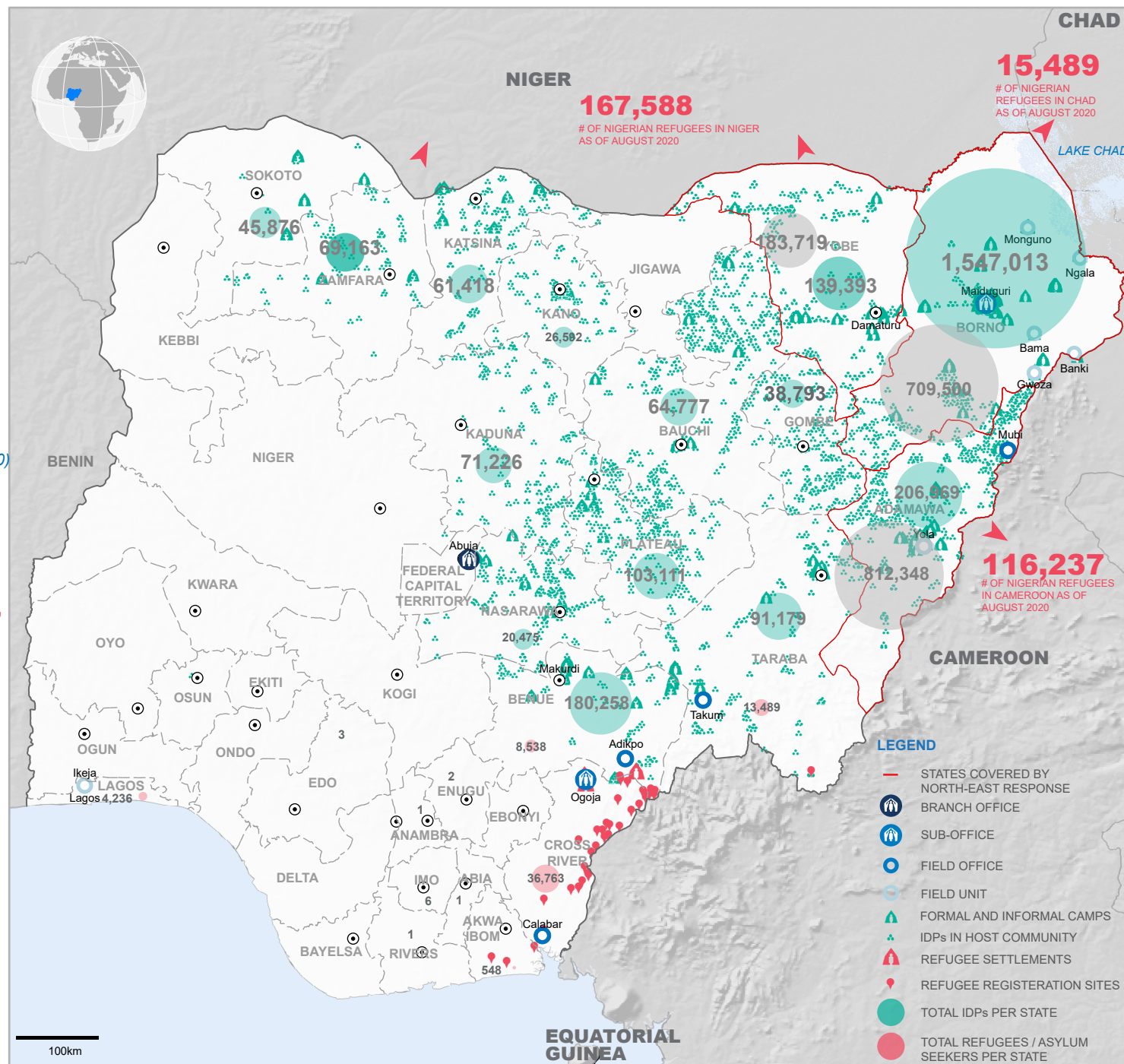
 **63,588**

REFUGEES AND ASYLUM SEEKERS REGISTERED IN NIGERIA

UNHCR - as of August 2020.

SITUATION OVERVIEW

Nigeria faces immense humanitarian and protection challenges due to the ongoing insurgency in the North East. The conflict has caused grave human rights violations, impacting particularly on the most vulnerable civilians. As of August 2020, there are 2,088,124 internally displaced persons in the Northeast region, with 91% of the displacements in Borno, Adamawa and Yobe states. Outside of the Northeast an estimated 578,119 people are displaced due to banditry and farmer-herders conflict. There are 63,588 registered refugees and asylum seekers as of August 2020, 58% are located in Cross Rivers, 21% in Taraba, 13% in Benue, 1% in other states and 6% registered in Lagos which are urban refugees and asylum seekers. There are 299,314 Nigerian Refugees in neighbouring countries of Niger (56%), Cameroon (39%), and Chad (5%).



DISCLAIMER: The boundaries and names shown and the designations used on this map do not imply official endorsement or acceptance by the United Nations.

UPDATED: September 2020

SOURCES: UNHCR, IOM DTM, HDX **FEEDBACK:** nigabim@unhcr.org