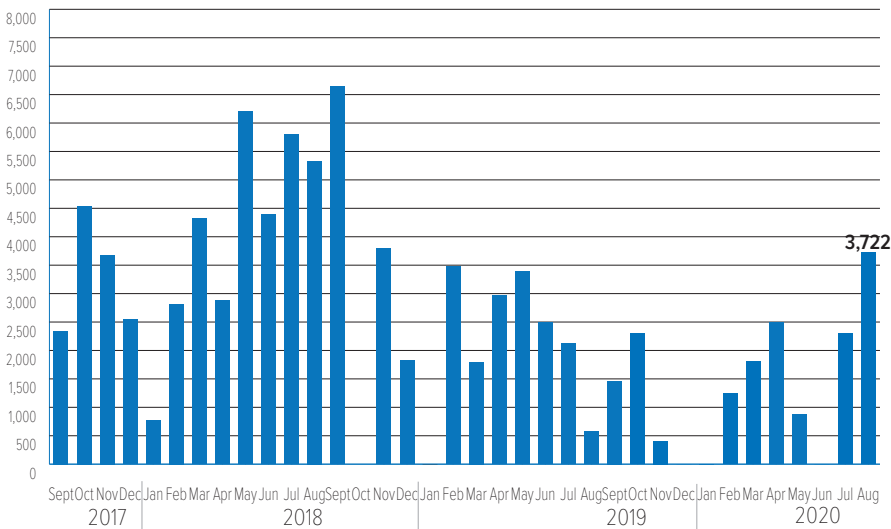


UNHCR and partners began to assist the voluntary repatriation of Burundian refugees in September 2017 as a durable solution for those refugees who their intention to return home. The vast majority of returns have been from Tanzania, with smaller numbers assisted to return from Kenya and the Democratic Republic of the Congo (DRC). Almost all returns from Rwanda and Uganda have so far been self-organized.

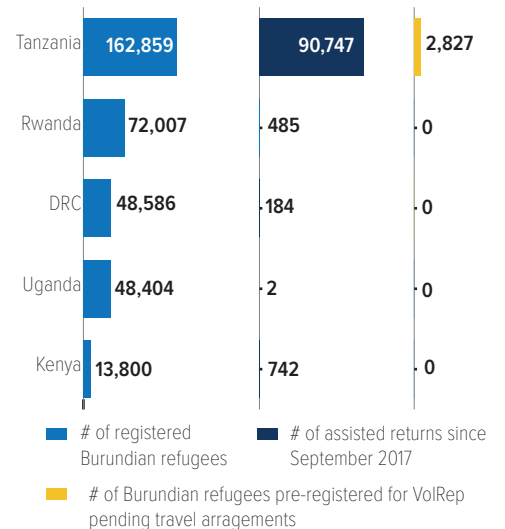
## KEY FIGURES – ASSISTED REPATRIATION



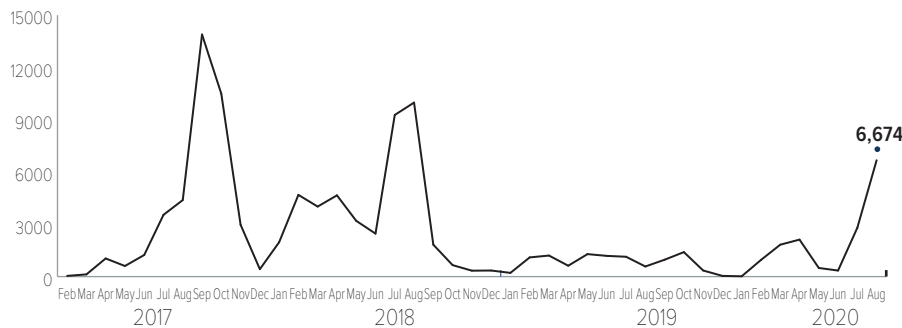
## RETURN TRENDS BY MONTH SINCE SEPTEMBER 2017



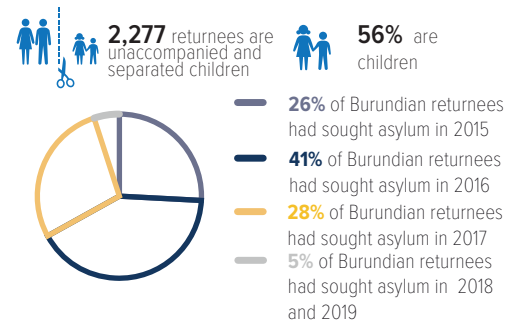
## RETURNS BY COUNTRY OF ASYLUM\*\*



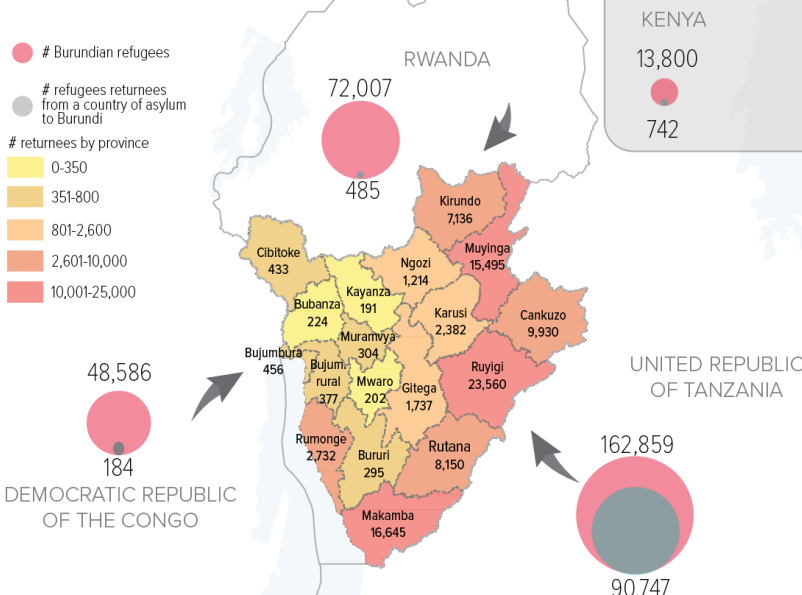
## REGISTRATION FOR VOLREP IN TANZANIA 2017-2020



## POPULATION PROFILE AT A GLANCE



## AREAS OF RETURN\*\*\*



\* Includes assisted returns from Tanzania (90,747), Kenya (742), Rwanda (485), DRC (184), Zambia (5), Uganda (2), Cameroon (2), Gabon (1), Senegal (1) and Burkina Faso (1).

\*\* Excludes number of refugees from Zambia, Senegal, Cameroon and Burkina Faso.

\*\*\* Excludes number of refugees from DRC, Cameroon and Burkina Faso.

## OVERVIEW

- UNHCR and partners are providing assistance to refugees who have decided to return to Burundi so that they may do so in safety and dignity, as well as to support social cohesion and sustainable return at the community level.
- Additional funding is critically needed to ensure that returns can continue as well as to strengthen returnee monitoring and support sustainable reintegration.
- The voluntary return operation from Tanzania to Burundi is taking place under the framework of the Tripartite Agreement between the two governments and UNHCR. All parties have agreed to ensure returns are voluntary.
- While the governments of Burundi and Tanzania have undertaken activities to promote refugee return. All actors in the region acknowledge the importance of refugees having the opportunity to make a free and informed choice about repatriation.
- While returnees are generally being welcomed back by the Government of Burundi and their communities of origin without incident, returnee monitoring indicates many do face a number of reintegration challenges.

# RETURN MONITORING IN BURUNDI

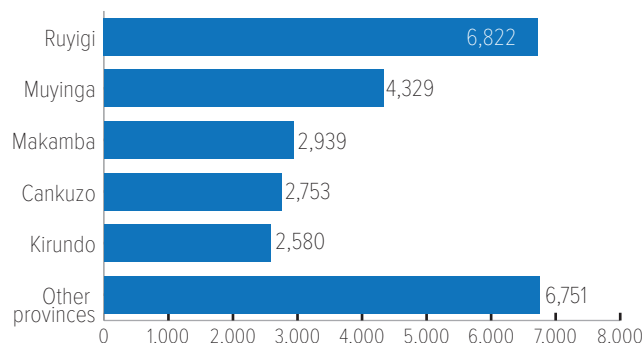
## METHODOLOGY

Protection monitoring of returnees to Burundi is an essential protection activity for UNHCR and its commitment under the Tripartite Agreement. It aims to collect, process, analyse and disseminate in a systematic and regular way, the data and information on: 1) The conditions of return of assisted returnees; and 2) The level of reintegration in return areas.

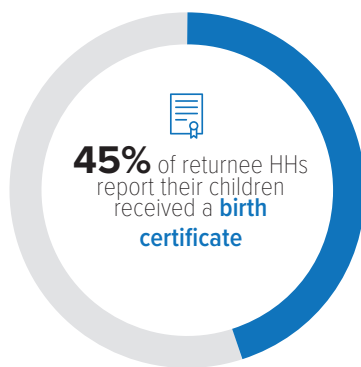
The purpose is to propose an effective protection response by area of intervention and for advocacy purposes (towards sectors of intervention, development actors, donors and government authorities). It was initially established in September 2017 after the repatriation started in Tanzania and was revised in early 2019 to better meet operational needs.

## MONITORING PROGRESS

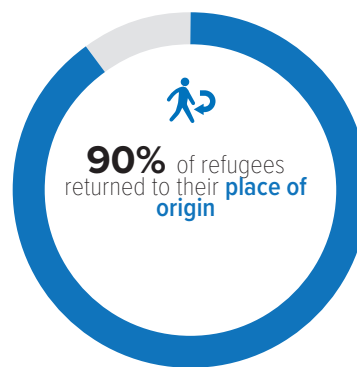
By 31 August 2020, **26,228** interviews with returnee families were conducted (see below the breakdown by province).



## CIVIL DOCUMENTATION



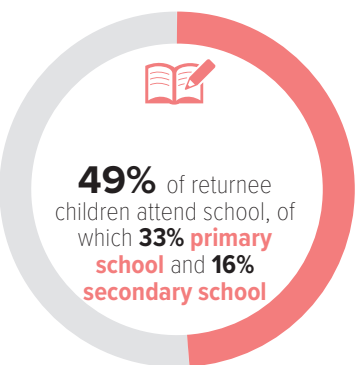
## DISPLACEMENT



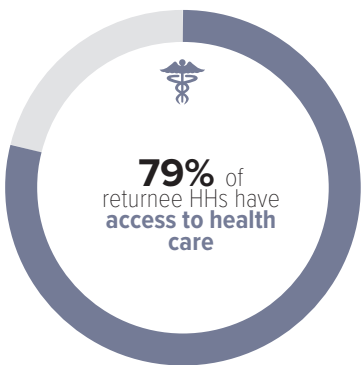
## VULNERABILITY



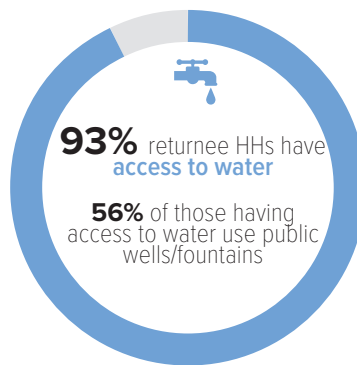
## EDUCATION



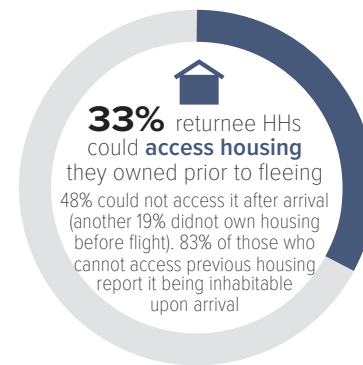
## HEALTH CARE



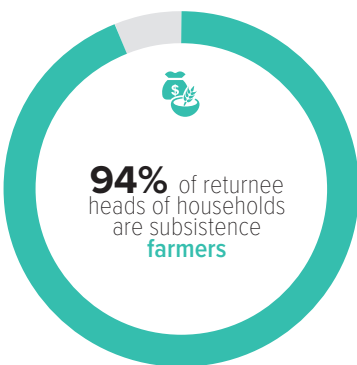
## WATER



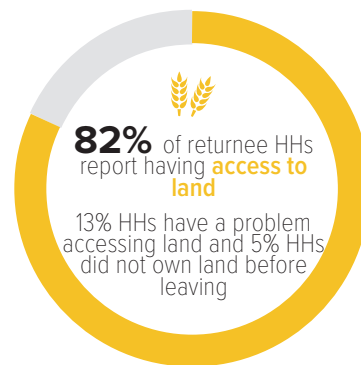
## ACCESS TO HOUSING



## LIVELIHOODS



## ACCESS TO LAND



## TOP 3 PRIORITIES IN THE USE OF CASH ASSISTANCE

All refugees who have returned with the assistance of UNHCR receive an initial return package in Burundi consisting of a cash grant, basic household supplies, and food items. Returnees report the cash grant was used for the following top priority expenses:

- 1. Household items (38%)**
- 2. Shelter (20%)**
- 3. Land rental (19%)**

## For more information please contact:

UNHCR Burundi: Brigitte Mukanga Eno, Deputy Representative, [eno@unhcr.org](mailto:eno@unhcr.org); Gwendolyn Roeske, Snr Prot. Officer, [roeske@unhcr.org](mailto:roeske@unhcr.org); Ana Maria Rivas, Prot. Officer (Monit. analyst), [rivas@unhcr.org](mailto:rivas@unhcr.org); Felix Ndama Wa Ndama, Assc PIM Officer, [ndamawan@unhcr.org](mailto:ndamawan@unhcr.org)  
UNHCR Regional Bureau for the East and Horn of Africa, and the Great Lake: Anna Minuto, Snr. IMO, [minuto@unhcr.org](mailto:minuto@unhcr.org);  
UNHCR Tanzania: Antonio Canhandula, UNHCR Representative, [canhandu@unhcr.org](mailto:canhandu@unhcr.org); George Kuchio, Deputy Representative, [kuchiog@unhcr.org](mailto:kuchiog@unhcr.org)