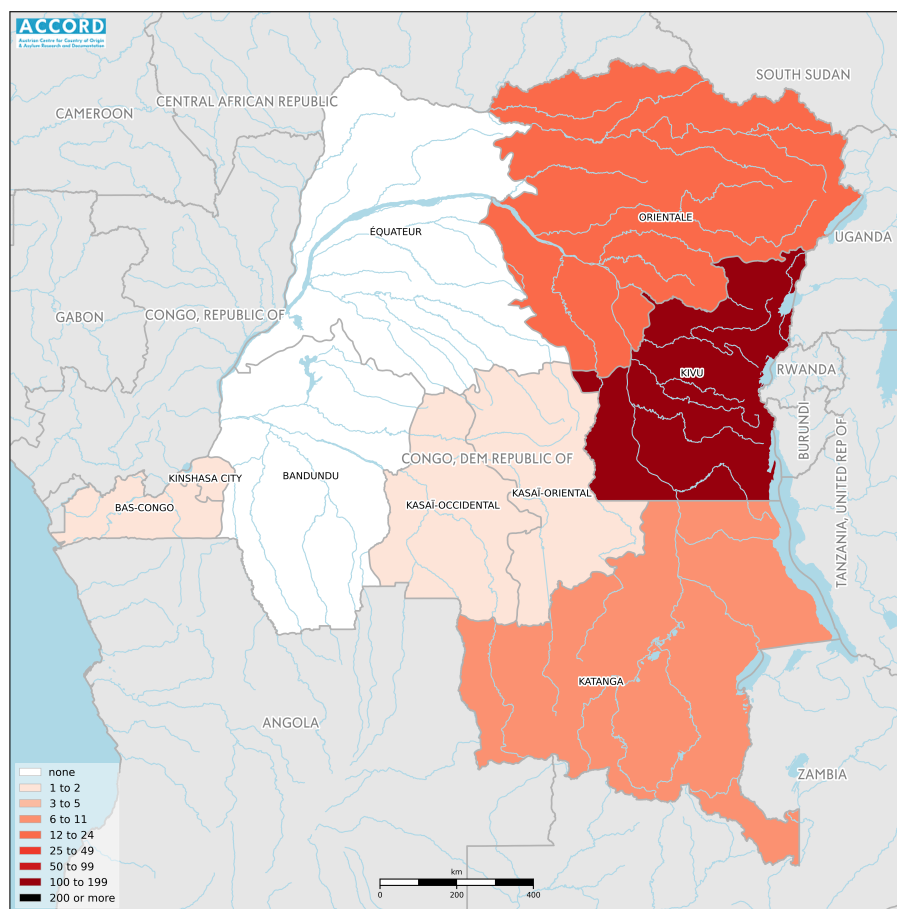


# DEMOCRATIC REPUBLIC OF CONGO, FOURTH QUARTER 2019:

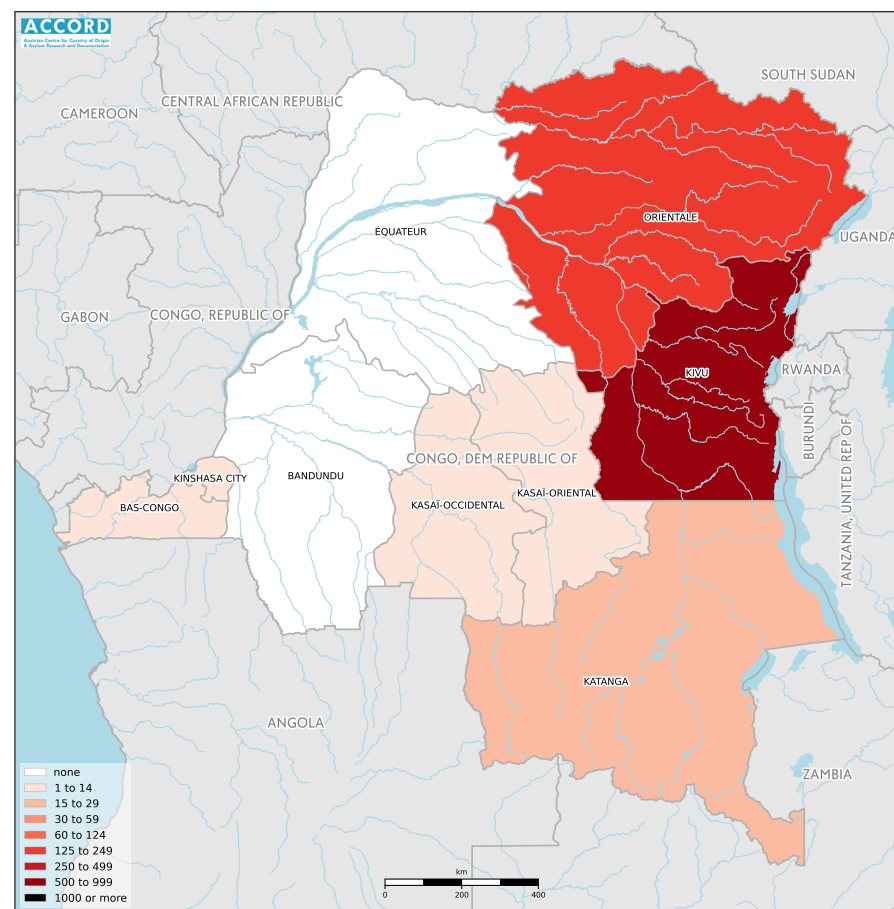
Update on incidents according to the Armed Conflict Location & Event Data Project (ACLED)

compiled by ACCORD, 23 June 2020

## Number of reported incidents with at least one fatality



## Number of reported fatalities



National borders: [GADM, November 2015b](#); administrative divisions: [GADM, November 2015a](#); incident data: [ACLED, 20 June 2020](#); coastlines and inland waters: [Smith and Wessel, 1 May 2015](#)

## Contents

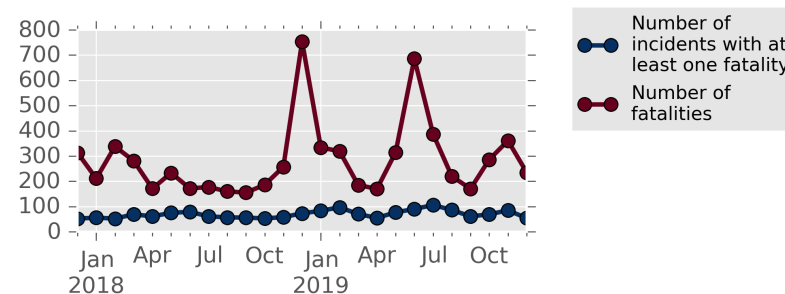
Number of reported fatalities	1
Number of reported incidents with at least one fatality	1
Conflict incidents by category	2
Development of conflict incidents from December 2017 to December 2019	2
Methodology	3
Conflict incidents per province	4
Localization of conflict incidents	4
Disclaimer	5

## Conflict incidents by category

Category	Number of incidents	Number of incidents with at least one fatality	Number of fatalities
Protests	183	4	7
Violence against civilians	180	103	397
Battles	165	81	438
Riots	57	19	35
Strategic developments	57	0	0
Explosions / Remote violence	8	1	5
<b>Total</b>	<b>650</b>	<b>208</b>	<b>882</b>

This table is based on data from ACLED (datasets used: [ACLED, 20 June 2020](#)).

## Development of conflict incidents from December 2017 to December 2019



This graph is based on data from ACLED (datasets used: [ACLED, 20 June 2020](#)).

## Methodology

The data used in this report was collected by the Armed Conflict Location & Event Data Project (ACLED). ACLED collects data on reported conflict events in selected African and Asian countries, Democratic Republic of Congo being among them. ACLED researchers collect event data from a variety of sources and code them by date, location, agent, and event type.

Most of the data collected by ACLED is gathered based on publicly available, secondary reports. It may therefore underestimate the volume of events. Fatality data particularly is vulnerable to bias and inaccurate reporting, and ACLED states to use the most conservative estimate available. ACLED uses the reports' context to estimate fatalities for events with reported fatalities for which the exact number is unknown ("10" for plural fatalities, "100" if "hundreds" are mentioned, etc.). For further details on ACLED and for the full data, see [www.acleddata.com](http://www.acleddata.com) and [Raleigh; Linke; Hegre, and Karlsen, 2010](#).

Based on this data, the Austrian Centre for Country of Origin & Asylum Research and Documentation (ACCORD) compiles updates on conflict incidents and publishes them on [ecoi.net](http://ecoi.net) to offer another access point to the ACLED datasets.

It is advised to employ extreme caution when using fatality numbers.

Assessments of the security situation should not be based solely on quantitative analysis of event data.

Note on the DR Congo: Administrative divisions (based on GADM data) are reflected as of before the 2015/2016 reform. The provinces displayed have been split into smaller provinces.

Geographic map data is primarily based on GADM, complemented with other sources if necessary. Incidents are mapped to GADM provinces using the provinces

in ACLED data. Province names and borders may differ between ACLED and GADM. Incidents that could not be located are ignored. The numbers included in this overview might therefore differ from the original ACLED data. ACLED uses varying degrees of geographic precision for the individual incidents, depending on what level of detail is reported. Thus, towns may represent the wider region in which an incident occurred, or the provincial capital may be used if only the province is known. Erroneous location data, especially due to identical place names, cannot be fully excluded.

Incidents comprise the following categories: battles, headquarters or bases established, non-violent strategic activities, riots/protests, violence against civilians, non-violent transfer of territory, remote violence. For details on these categories, please see

- ACLED – Armed Conflict Location & Event Data Project: Armed Conflict Location and Event Data Project (ACLED) Codebook (2019), 10 April 2019 [https://www.acleddata.com/wp-content/uploads/dlm\\_uploads/2017/10/ACLED\\_Codebook\\_2019FINAL\\_pbl.pdf](https://www.acleddata.com/wp-content/uploads/dlm_uploads/2017/10/ACLED_Codebook_2019FINAL_pbl.pdf)
- ACLED – Armed Conflict Location & Event Data Project: Armed Conflict Location and Event Data Project (ACLED) User Quick Guide, April 2019 [https://www.acleddata.com/wp-content/uploads/dlm\\_uploads/2019/04/General-User-Guide\\_FINAL.pdf](https://www.acleddata.com/wp-content/uploads/dlm_uploads/2019/04/General-User-Guide_FINAL.pdf)
- ACLED – Armed Conflict Location & Event Data Project: FAQs: ACLED Fatality Methodology, 27 January 2020 <https://www.acleddata.com/download/17979/>

## Conflict incidents per province

Province	Number of incidents	Number of incidents with fatalities	Number of fatalities
Bandundu	2	0	0
Bas-Congo	11	1	1
Kasai-Occidental	13	1	1
Kasai-Oriental	17	1	1
Katanga	29	7	21
Kinshasa City	47	2	2
Kivu	472	174	726
Oriental	58	22	130
Équateur	1	0	0

## Localization of conflict incidents

**Note:** The following list is an overview of the incident data included in the ACLED dataset. More details are available in the actual dataset (date, location data, event type, involved actors, information sources, etc.). The data's precision varies among the incidents: a town may represent a region, or the provincial capital may be used if the precise location of an incident is unknown. In the following list, the names of event locations are taken from ACLED, while the administrative region names are taken from GADM data which serves as the basis for the maps above.

In **Bandundu**, 2 incidents killing 0 people were reported. The following locations were among the affected: **Bandundu, Kikwit**.

In **Bas-Congo**, 11 incidents killing 1 person were reported. The following

locations were among the affected: **Boma, Inkisi, Kinzau Vuete, Matadi**.

In **Kasai-Occidental**, 13 incidents killing 1 person were reported. The following locations were among the affected: **Kakenge, Kalomba, Kananga, Tshikapa**.

In **Kasai-Oriental**, 17 incidents killing 1 person were reported. The following locations were among the affected: **Bene Dibele, Kabinda, Lodja, Lubilanji, Lusambo, Mbuji Mayi, Mwene Ditu, Ngandanjika**.

In **Katanga**, 29 incidents killing 21 people were reported. The following locations were among the affected: **Kalemie, Kamina, Kasumbalesa, Kolwezi, Kongolo, Likasi, Lonshi Mine, Lubumbashi, Musonoi, Ruashi**.

In **Kinshasa City**, 47 incidents killing 2 people were reported. The following locations were among the affected: **Camp Kokolo, Gombe, Kasa-Vubu, Kinshasa, Kisenso, Limete, Lingwala, Ma Campagne, Mikonga, Ndolo Airport, Ngaba**.

In **Kivu**, 472 incidents killing 726 people were reported. The following locations were among the affected: **Abia, Bambu, Baraka, Beni, Bijombo, Binza, Birwa, Bishusha, Boikene, Bukavu, Bukombo, Bulambika, Bulambo, Bumbasha, Bunyatenge, Buramba, Busanza, Bushenge, Bushimoo, Bushongorera, Butembo, Bwalarie, Bweremane, Bwito, Chambombo, Chaminunu, Chanika, Chelamazi, Cifunzi, Fizi, Goma, Hembe, Idjwi, Idunga, Isale, Ishenge, Kabambare, Kabare, Kabeya, Kabumba, Kabushwa, Kadou, Kagogo, Kahungwe, Kainama II & III, Kakola, Kalehe, Kalibi, Kalingathi, Kalingi, Kalole-Mapeto, Kalonge, Kalunguta, Kamango, Kamiriki, Kamituga, Kanyabayonga, Kanyatsi, Kanyola, Karuruma, Kashwa, Kasindi, Katana, Katsiru, Kavumu, Kazaroho, Kibirizi, Kibumba, Kididiwe, Kikuku, Kikuvo, Kimaka, Kindu, Kingulube, Kinigi, Kirumba, Kisalala, Kisanga, Kisasa, Kisharo, Kisima, Kisombe, Kitchanga, Kitobo, Kitumba, Kitutu, Kivunano, Kivuye, Kiwanja, Kudukudu, Kusisa, Kyaghala, Lake Edward, Loashi, Lubero,**

Lukanga, Luke, Lukweti, Lulimba, Lulingu, Lwama, Lwibo, Lwiro, Magunda, Maleki, Mamove, Mangina, Mapiki, Mapobu, Mapou, Masisi, Matembe, Matolu, Mavivi, Mayangose, Mayimoya, Mbau, Mbuhi-Pilote, Mianja, Mikenge, Mikenso, Minembwe, Minova, Mirangi, Misisi, Mongaha, Muhangi, Mukera, Mukoko, Mulimbi, Mulongwe, Mulungu, Munigi, Munoli, Mwalika, Mwenga, Mweso, Ndeko, Ngesha, Nundu, Nyabanira, Nyabiondo, Nyakakoma, Nyaleke, Nyalubemba, Nyamilima, Nyamukubi, Nyamutiri, Nyange, Nyanzale, Nyirabiroha, Oicha, Pakanza, Panzi, Parking Mine, Pasisi, Pinga, Rizeri, Rutare, Rutshuru, Sake, Sange, Shabunda, Shanje, Tenambo, Tongo, Totolito, Tulambo, Uvira, Vitshumbi, Vuhovi, Walikale, Wibingilila Mine, Ziralo.

In **Orientale**, 58 incidents killing 130 people were reported. The following locations were among the affected: **Badengaido, Bangadi, Biakato, Blukwa, Bunia, Djugu, Doruma, Durba, Isiro, Jiba, Kafe, Kampala, Kilomines, Kisangani, Lake Albert, Lolwa, Luengba, Mambasa, Mandumbi, Masombo, Mayangu, Mboki, Mongbwalu, Nakorda, Pimbo, Talolo, Tara, Tchomia.**

In **Équateur**, 1 incident killing 0 people was reported. The following location was among the affected: **Mbandaka.**

## Sources

- ACLED – Armed Conflict Location & Event Data Project: Africa (20 June 2020), 20 June 2020  
<https://www.acleddata.com/download/2909/>
- GADM – Global Administrative Areas: COD\_adm.zip, Version 2.8, November 2015a  
[http://biogeo.ucdavis.edu/data/gadm2.8/shp/COD\\_adm.zip](http://biogeo.ucdavis.edu/data/gadm2.8/shp/COD_adm.zip)
- GADM – Global Administrative Areas: gadm28\_levels.shp, Version 2.8, November 2015b  
[http://biogeo.ucdavis.edu/data/gadm2.8/gadm28\\_levels.shp.zip](http://biogeo.ucdavis.edu/data/gadm2.8/gadm28_levels.shp.zip)
- Raleigh, Clionadh; Linke, Andrew; Hegre, Håvard, and Karlsen, Joakim: "Introducing ACLED-Armed Conflict Location and Event Data", in: Journal of Peace Research (47(5) 2010 ), pp. 651–660  
<http://jpr.sagepub.com/content/47/5/651.full.pdf+html>
- Smith, Walter H. F. and Wessel, Paul: Global Self-consistent Hierarchical High-resolution Geography (GSHHG), Version 2.3.4, 1 May 2015  
<https://www.ngdc.noaa.gov/mgg/shorelines/data/gshhg/latest/>

## Disclaimer

Event data may be revised or complemented in future updates. Updates in ACLED's datasets will not necessarily be reflected in ACCORD's reports if the update occurs close to or after the latter's publication. Changes in the sources used by ACLED to collect incident data might affect the comparability of data over time. For more information on ACLED's methodology, please see [www.acleddata.com/resources/methodology/](http://www.acleddata.com/resources/methodology/). For more information on ACCORD's products based on the data,

please see the [ecoi.net blog posts tagged with "ACLED"](#). The lack of information on an event in this report does not permit the inference that it did not take place. The boundaries and names displayed do not imply endorsement or acceptance by the Austrian Red Cross.

#### **Cite as**

- ACCORD – Austrian Centre for Country of Origin & Asylum Research and Documentation: Democratic Republic of Congo, fourth quarter 2019: Update on incidents according to the Armed Conflict Location & Event Data Project (ACLED), 23 June 2020