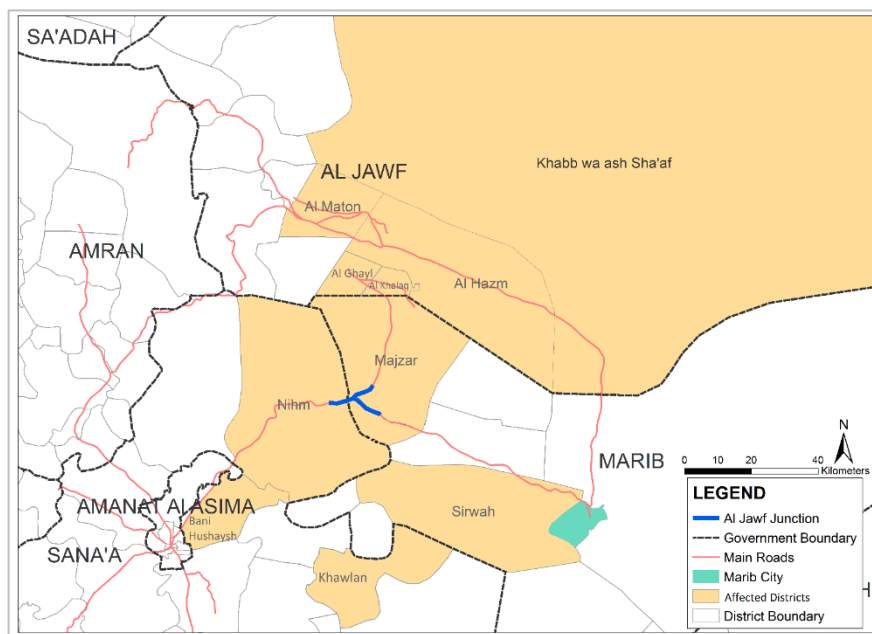


This report is produced by OCHA Yemen in collaboration with humanitarian partners. It covers the period from 19 January to 2 February 2020

## HIGHLIGHTS

- Between 19 January and 2 February, humanitarian partners report that **3,825 families** were displaced in Nihm District in Sana'a Governorate, Sirwah District in Marib Governorate and Al Maton in Al Jawf Governorate, following a rapid escalation of hostilities. With many internally displaced families scattered across three governorates, in hard-to-reach areas, or seeking shelter with host communities, the total number of people displaced is likely to be higher than reported.
- On 26 January, artillery shelling hit Al-Khaniq IDP site in Majzar District. No casualties were reported, however, most IDPs who were staying in the camp or in the vicinity, around **1,550 families**, left for Medghal District or Marib City.
- As of 28 January, some **2,000 families** (including from Khaniq IDP site) have been displaced within Marib Governorate, around **500 families** were displaced within Nihm District in Sana'a Governorate, and **400 families** were displaced within Al Jawf Governorate. In addition, partners in Sana'a Governorate registered and provided immediate life-saving support through the Rapid Response Mechanism (RRM) to **180 displaced families** in Bani Hushaysh District.
- On 29 January, another **100 families** were displaced from Sirwah District in Marib Governorate to Khawlan District in Sana'a Governorate.
- Many of those fleeing frontline areas are being displaced for the second time and have exhausted their social or financial assets. Many are reportedly sleeping on the streets or in crowded conditions in urgent need of emergency shelter and non-food items (NFIs) including warm items for winter and tents.
- Humanitarian partners are mobilizing resources in all three governorates.
- Two transit sites are being established, one in Al Kusheef, around 7 kilometres from Marib City, which currently hosts around 500 families and has a maximum capacity of 2,500 people, and Mils camp, which hosts 100.
- Two rub halls have been sourced and Camp Management and Camp Coordination (CCCM) kits will be sourced locally. UNICEF is supporting the local water department.
- UNFPA RRM partners have registered 1,345 families and provided RRM kits to 1,210 recently displaced families in Marib, Al Jawf, and Sana'a Thirty-seven per cent of the new IDPs enrolled are staying in IDP sites.
- Limited communication has added to security concerns near the conflict lines which is hampering the response in some areas.
- Common storage has been identified as an immediate gap.

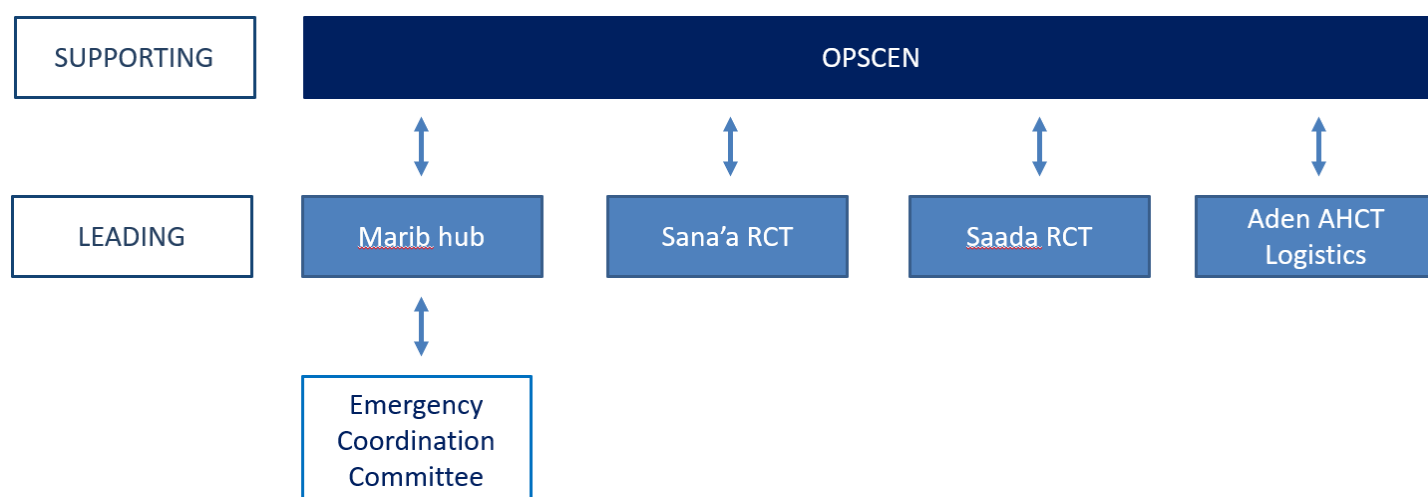


- If hostilities continue to intensify, more displacements are likely to occur in Al Hazm, Nihm, Mazjar, Sirwah and Medghal districts. Humanitarian partners estimate that at worst some 15,500 households could displace.

	Marib	Sana'a	Al Jawf
<b>Families displaced (at least)</b>	2,133	180 (Bani Hushaysh) 500 (Nihm) 100 (Khawlan) 59 (Hamdan)	853
<b>Destination locations</b>	Sirwah district, Marib City	Bani Hushaysh, Nihm, Khawlan districts	Khalaq, Ghayl, Al Hazm districts

## GENERAL COORDINATION MECHANISMS

Regional coordination teams (RCTs) are leading the response in their respective areas with the Marib Hub coordinating with the Executive Unit through a newly established Emergency Coordination Committee, Aden Area Humanitarian Coordination Team (AHCT) providing logistics support, and the OpsCen supporting the coordination of the overall response in both internationally recognized government (IRG) and de facto authority (DFA) areas.



## HUMANITARIAN RESPONSE

## MARIB / AL JAWF

### Camp Coordination and Camp Management

**Needs:**

- While the CCCM subnational coordinator is in place and coordinating the response in sites in conjunction with the authorities, further local level coordination and empowerment of local coordination structures is required.
- For the expansion of sites, further NFI and shelter kits are required, as capacity is identified.

**Response:**

- The CCCM Sub-National Cluster Coordinator is supporting the authorities to identify sites that can be expanded in Marib which are already starting to host IDPs from Mazjar, and to expand the capacity of AIMil camp. Most sites have already received new arrivals and figures and needs are currently being verified.
- The Sub-National Cluster has requested 1,500 tents for the sites to be expanded; UNFPA is deploying 1,000 RRM kits; and the Logistics Cluster is transporting two mobile storage units for S-NFI and RRM pre-positioning. These critical supplies will be in Marib within a two-week period.
- CCCM is supporting local authorities with the identification and listing of beneficiaries and a response mechanism according to agreed displacement tracking.

## RRM / Shelter/ NFIs

### Needs:

- 1,750 households registered
- Partners received requests for 300 blankets and 300 mattresses for Al Khaniq camp and for 227 tents and 227 NFIs for Al Khaniq and Al Hazm.

### Response:

- RRM partners in Sana'a Governorate registered and supported 180 displaced families in Bani Hushaysh District.
- IOM is transporting 1,500 NFI and 1,500 Emergency Shelter kits (ESKs) from Aden to Marib for rapid distribution.
- IOM has distributed 269 RRM kits to newly arrived IDPs since 22 January; 426 RRM kits remain in stock in Marib City, and an additional 1,000 RRM kits will arrive within a week for rapid distribution.
- RRM partners IOM, BFD and YARD in Marib and Al Jawf enrolled 864 new IDPs and, as of 28 January, had provided RRM kits to 768 families; 1,377 RRM kits remain in stock in their warehouse and UNFPA has dispatched 1,000 RRM kits from Aden to Marib for pre-positioning.
- Additional kits are being procured.
- IOM and a local partner are identifying two more warehouses in Marib City which will be available from 30 January to store in-kind distributions.
- IOM will provide Shelter/NFI winterization supplies to 700 newly IDP families in Al Khaniq and 1,000 IDP families in the Al Wadi sites.
- IOM will prioritize cash assistance for SNFIs/ESKs to IDPs in Marib City and Al Wadi District depending on the availability of basic items and the availability of accommodation in Marib.
- In Marib, the Sub-National Shelter Cluster (SNSC) is coordinating with partners regarding shelter assistance for newly arrived IDPs in Sana'a Governorate only.
- The national Shelter Cluster has developed an internal matrix to facilitate timely updates on assessment, needs, response, and gaps. The SNSC provides daily update reports.
- UNHCR is pre-positioning 400 NFIs and 40 ESKs to the Yemen General Union of Sociologists, Social Workers and Psychologists (YGUSSWPP) warehouse in Bani Hushaysh who will distribute them at no cost.
- As of 29 January, YGUSSWPP had provided NFIs to 69 families in Bani Hushaysh using UNHCR stock.
- BCHR provided 50 tents, 200 blankets and 100 mattresses in Marib.
- A dedicated staff member will be appointed as Area Coordinator for the Shelter Cluster.
- Active partners identified in Marib are YRCS, YARD, CSSW.

**Gaps and Constraints:**

- Difficulty in accessing beneficiaries in areas next to frontline areas.
- Difficulty in communicating in the field.
- Difficulty in tracking IDPs who are scattered.
- Lack of an emergency call centre for referral of urgent needs.

**Stock Availability**

What	Quantity	Location
RRM kits	1,000	Aden
RRM kits	370	Marib City (IOM)
RRM kits	957	Al Hazm, Al Jawf (YARD)
RRM kits	50	Serwah, Marib (BFD)
NFI kits (expected within days)	400	UNHCR stock in YGUSSWPP (Bani Hushaysh)
ESK kits (expected within days)	40	UNHCR stock in YGUSSWPP (Bani Hushaysh)
NFI kits	500	Ataq (DRC)
Warehouse space for NFIs	1,574 (space)	Ataq (DRC warehouse)


**Water, Sanitation and Hygiene**
**Needs:**

- Al Kusheef transit sites require installation of water tanks and planning for sanitation.
- Additional safe water supply for IDPs in Al Jamina.

**Response:**

- IOM will install 1 x 2-3,000 litre water tanks in all IDPs sites where possible. Installation is completed at the Al Kusheef camp and water treatment is prepared.
- UNICEF through the GARWSP-EU Rapid Response Team (RRT) mobilized supplies for WASH partners, including aquatabs for water treatment and 20 additional water tanks. Further supplies of basic and consumable hygiene kits can be mobilized when needed
- UNICEF through LWSC (local water authorities) conducted rapid WASH assessments and identified 3 wells and 30 water points transit sites.
- Beneficiaries already received basic hygiene kits through the RRM response, and WASH Cluster partners have pre-positioned consumable hygiene kits in preparation for the next round.

- IOM and partners are conducting further WASH assessments to identify locations for water tank and latrine installation as needed.
- On 30 January, IOM established a voucher system for water with a provider close to Al Jamia to enable IDPs to access safe water through vouchers.
- IOM established a long-term water trucking agreement to ensure water provision for IDP sites.

#### Gaps and Constraints:

- The installation of WASH services and water trucking services are restricted in temporary sites.

#### Stock Availability

What	Quantity	Location
Aquatabs	225 Cartons (1.67mg) and 80 cartons (33mg) 38,070 Cartons (1.67mg) and 19,300 cartons (33mg)	Marib Sana'a (Central)
Consumable Hygiene Kits	1,400 154,630	Marib (additional supplies can be mobilized from Sana'a and Aden) Central (Sana'a)
Basic Hygiene Kits	2,500	Sana'a (can be mobilized as needed)
Water tanks	700 x 1,000L and 20 x 2,000L	Sana'a (Can be mobilized to Marib as needed)
Jerry Cans 20L	4,500 12726 (10L), 106879 (20L)	Marib Central (Sana'a)
Water Tanks	780 (1000L)	Sana'a

## Food Security

#### Needs:

- The food assistance needs of displaced populations, in Marib and also in Sana'a Governorate, are, to date, within capacity and are being met.

#### Response:

- RRM kits have been provided during the week in Bani Hushaysh and also to most of those who arrived in Marib City. Sufficient RRM kits are available in Sana'a and Aden to meet the immediate needs for the population currently affected.
- WFP is also organizing a one-month food ration for those who arrived in Bani Hushaysh, Sana'a Governorate, as early as next week.

- The Cluster is following up with other non-WFP partners on their readiness and availability to provide further support in case needed.

#### Gaps and Constraints:

- The current insecurity in Nihm (Sana'a Governorate), and in Majzar, Raghwan and Madghal (Marib Governorate) is affecting delivery and/or distribution of food assistance for people assisted under the normal WFP general food assistance programme. In total, WFP assists some 90,000 beneficiaries in these four districts on a monthly basis. Food movements to these districts and distributions will resume as soon as the situation stabilizes.
- No major access constraint has been reported thus far between Aden and Marib and WFP food is moving to Marib City smoothly with minor delays.

#### Stock Availability:

- WFP has sufficient food stocks to meet the food needs of displaced populations on both sides of the conflict. No concerns have so far been raised by the partners and new cases are being accommodated in the ongoing programmes.



## Health

#### Needs:

- Steady essential medication (Interagency Emergency Health Kits - IEHKs) supply to support the provision of health care either through static facilities or mobile clinics/teams.
- Strengthen the referral mechanism to secondary hospitals especially for pregnant women and trauma victims.
- Due to massive displacement, the risk of vaccine preventable disease has increased, therefore a focus on immunization activities is needed.
- Strengthening disease surveillance – to respond in a timely manner to any new outbreaks which might be caused by displacement and environmental factors.

#### Response:

- IOM operates a mobile health clinic and provides support to two hospitals in Marib City, ensuring that IDPs receive access to free health care and referral services.
- CSSW is supporting 14 health facilities and operating 4 medical mobile clinics which will be mobilized further to cater for the needs of the newly displaced.
- UNFPA deployed a mobile clinical team through BFD.
- UNFPA supports two hospitals, one health centre, and one health unit in Marib for provision of reproductive health services.

#### Gaps and Constraints:

- Poor telecommunication services hindering timely communication between UNFPA and partners in the field.
- Logistic hindrances making it difficult to pre-position IEHKs from Aden to Marib.

**Stock Availability**

What	Quantity	Location
IEHKs, DDKs	6	Marib

 **Nutrition**
**Needs:**

- Management of severe acute malnutrition (SAM) in IDP locations.
- Management of moderate acute malnutrition (MAM) in IDP locations.
- Management of SAM with complications and referral to the Therapeutic Feeding Centres.
- Support of infant and young child feeding practices in IDP locations.
- Preventing the deterioration of the nutrition situation Blanket Supplementary Feeding Programmes (BSFP) in IDP areas in districts eligible districts.

**155 SAM cases,  
743 MAM cases  
and 334 PLW  
IDPs in Marib and  
Al Jawf**

**Response:**

- Nutrition stocks countrywide are fully adequate to meet needs. WFP has ongoing BSFP and TSFP programmes with four partners in Marib.
- Screening of acute malnutrition among children under age 5 and PLWs is underway.
- Monitoring of the nutrition situation (weekly/monthly admissions trends in the nutrition sites and mobile teams).
- Treatment of SAM in static nutrition sites and in some of the IDP sites through mobile teams.
- Treatment of MAM in static sites and in some IDP sites using mobile teams.
- Counseling on infant and young child feeding practices.
- Exploring the provision of BP 5 biscuits for new arrivals at transit/reception centres.

**Gaps and Constraints:**

- Difficult to reach IDPs sites due to limited access in some locations.
- Closure of nutrition services in some of the areas due to conflict e.g. Majzer where two sites have closed since 19 January.
- Interruption of nutrition services for children already enrolled in therapeutic and supplementary feeding programmes.
- Additional funding might be needed for additional mobile teams when IDP locations are accessible.
- Lack of SAM kits in Al Jawf.

**Stock Availability**

What	Quantity	Location
RUSF	58.45MT	Al Jawf (enough for 2-3mo)
RUSF	33.76MT	Marib (enough for 2-3mo)

Plumpy Doz	13.6 MT	Al Jawf (enough for 2-3mo)
Plump doz	19.7MT	Marib (enough for 2-3mo)
WSB++	93.4	Al Jawf (enough for 2-3mo)
WSB++	59.6	Marib (enough for 2-3mo)
RUTF	1,000 cartons	Marib (enough for 4mo)
RUTF	3,000 cartons	Al Jawf (enough 7 mo)
Amoxicillin	800 bottles	Marib (enough for 3.5mo)
Amoxicillin	2000	Al Jawf (enough for 5Mo)
SAM kits	0	AL Jawf
SAM kits	5	Marib

## Protection

### Needs:

- The shelling and ongoing confrontation is causing ongoing displacement, casualties and physical loss to civilians. Protection needs vary from case management, civil documentation (ID cards needed to access humanitarian assistance), urgent protection cash assistance to enable newly displaced families to access food and other essential basic items, and life-saving assistance.
- In Al Khasheef site, Sama Al-Yemen NNGO conducted needs assessment of 130 displaced families. The initial needs assessment indicates that the families in need of protection cash, NFIs, WASH and food.
- In addition to psychological support, safe spaces are needed for traumatized women and children affected by displacement.
- Need to conduct a child protection (CP) assessment to identify children in need and specify their needs.
- Need to define clearly the needs of IDPs and host communities to avoid conflict in the communities.
- Family separation.

**50 IDP  
FAMILIES**  
received protection cash

### Response:

- Cluster partner (NNGO) provided cash assistance to 50 IDP families who were displaced to Marib City and Al-Wadi Districts.
- Cluster provided psychosocial support to 70 new IDPs families and is planning to distribute 1,500 dignity kits.
- Cluster partners tracked IDP movement as part of a joint committee to track new movements of displaced families in Marib, Al Jawf and Sana'a governorates.
- Protection monitoring conducted by NNGO at newly established camps: Mil camp accommodates 100 families, Al Khasheef accommodates 500 families.
- Provision of psychosocial support to children and adolescents through the community centre approach. Children and adolescents are receiving PSS support through 17 community centers in Marib governorate.

- Provision of critical services (family tracing and reunification assistance, victim assistance, reintegration and rehabilitation) to the most vulnerable children through the case management system in Marib Governorate.
- GBV partners provided psychosocial support through a field visit and individual visits to 232 displaced families and 29 awareness sessions.
- Cluster partner (NNGO) monitored the displacement in the two targeted sites in Marib District where it reached 150 HH, 75 HHs in Algofainah hosting site and 23 HHs in the community college collective center.
- The partner provided cash assistance to 70 HHs affected from the ongoing clashes in both sites. 419 individuals received psychosocial support through the Child Friendly Spaces (CFS), 70 individuals were referred to ExU to be included in the food basket distribution list, 75 individuals were referred to CRA to issue IDs to facilitate access to humanitarian assistance. Similarly, 75 individuals were referred to CRA to issue birth certificates to enable children to school.

#### Gaps and Constraints:

- Discontinuation of communications (road, mobile) on the road to Madagal District.
- Ongoing clashes and the difficulty reaching locations where there is new displacement to track movements.
- Funding to respond to the protection needs of newly displaced families.
- Lack of clarity regarding the number of IDPs and host communities in need.
- Lack of protection analysis.

## Education

#### Needs:

- 20 schools closed.
- Assessments and verifications ongoing.

#### Stock Availability

What	Quantity	Location
School bag kits	7,400	Aden UNICEF WH
School-in-a-box (1 box*40 children)	25	Aden UNICEF WH
Recreational kits (1 kit per school covering max 100 students, if more students extra kits will be considered)	25	Aden UNICEF WH

## HUMANITARIAN RESPONSE

## SANA'A/AL JAWF

### Camp Coordination and Camp Management

#### Needs:

- CCCM partners report 383 families displaced.

#### Response:

- Land identification for site expansion in al Jawf currently in process. Reports indicate that a site located in Al Khaleq district is considered for expansion however capacity and local authority approvals are yet unclear.

#### Gaps and Constraints:

- Reduced partner capacity due to pending sub-agreement approvals.

### RRM / Shelter NFI

#### Needs:

- Some 400 families displaced within Al Jawf Governorate.
- 452 new IDP families as follows: 283 families moved from Majzer to Al Khalaq, 100 families moved from Majer to Al Hazm/Alsaad, 69 families moved to Al Hazm City.

#### Response:

- UNFPA RRM partners -YARD, IRY and BFD - enrolled 481 new IDPs and distributed 442 kits as of 28 January in Al Jawf, Sana'a, Al Bayda and Taizz with 1,512 kits in stock to cover IDP arrivals in each location and UNFPA will dispatch additional 2,000 kits to Jawf and 1,500 to Sana'a for pre-positioning.
- SNSC in Sa'ada is closely coordinating with other clusters, Executive Unit, OCHA, partners (CSSW, BCHR, YARD), YRCS and ICRC. SNSC has delegated authority to take strategic decisions in consultation with national Shelter Cluster.
- National Shelter Cluster developed an internal matrix to facilitate timely updates on assessment, needs, response and gaps. SNSC provides daily update reports.
- YRCS provided 40 tents in Al Saad in Al Hazm District.
- YRCS committed to providing cash assistance to 75 families in Al Hazm.
- 22 blankets provided and 128 committed by BCHR to AL Hazm City.

#### Gaps and Constraints:

- Difficulty in accessing beneficiaries in areas next to frontline areas.
- Difficulty in communicating in the field.
- Difficulty in tracking IDPs who are scattered.
- Some IDPs have difficulty in reaching safe locations.
- Lack of an emergency call centre for referral of urgent needs.

#### Stock Availability

What	Quantity	Location
RRM kits	542	Kharab Al Marashi, Al Jawf (YARD)
RRM kits	70	Shamlan, Sana'a (IRY)

RRM kits	900	Sawadiah+Radaa+Beyda,Al Beyda (BFD)
Tents	150	Al Hazm (BCHR)
ESK	1,900	Sa'ada (DRC warehouse 1)
NFI	2,400	Sa'ada (DRC warehouse 2)

## Water, Sanitation and Hygiene

### Needs:

- Districts are high cholera risk and source districts, therefore additional mobilization of awareness and control measures required.
- There is a need to conduct assessments, however permits have not been approved in several areas.

### Response:

- In Sana'a, YGUSSP is supporting WASH services in the existing IDP community centre in Bani Hushasyh and is conducting a WASH assessment for new IDPs.
- In Sana'a (Bani Hushaysh, Khawlan, At Atyal) additional WASH partners are preparing to respond and have engaged in access discussions with the authorities in case needs are identified among the IDPs
- In ADRA in Al Jawf is preparing a WASH needs assessment.
- In Khawlan, GWQ is conducting a WASH needs assessment for 100 newly arrived IDP families.

### Gaps and Constraints:

- In Sana'a there is an urgent need to identify the most vulnerable groups in remote areas to establish response and coordination modalities and communication channels.
- In Sana'a, WASH organizations who have existing funds, supplies and capacity to respond immediately in some areas have but not been given permission to assess needs or implement a response.
- In Al Jawf the main WASH partner relocated staff due to security reasons. As a result, there is no WASH presence currently there. The WASH Cluster is working with local NGOs and the authorities to identify alternative options and support modalities.

### Stock Availability

What	Quantity	Location
Consumable Hygiene Kits (CHKs)	3,963	Sana'a
	1,845	Al Jawf
	4,085	Sa'ada
	154, 630	Central (Sana'a)
Aquatabs (Chlorine tablets for water treatment)	2,932Cartons (1.67mg) and 394 cartons (33mg)	Sana'a
	494 Cartons (1.67mg) and 51 cartons (33mg)	Al Jawf
	1,027 Cartons (1.67mg) and 201 cartons (33mg)	Sa'ada
	38070 Cartons (1.67mg) and 19,300 cartons (33mg)	Central (Sana'a)
Jerry Cans	11,224 (20L)	Sana'a
	1,434 (10L), 4,867 (20L)	Al Jawf
	939 (10L), 9,308 (20L)	Sa'ada
	12726 (10L), 106879 (20L)	Central (Sana'a)

Water Tanks	780 (1000L)	Sana'a
-------------	-------------	--------

## Health

### Needs:

- Steady essential medication (IEHKs) supply to support the provision of health care either through static facilities or mobile clinics/teams.
- Strengthen the referral mechanism to secondary hospitals especially for pregnant women and trauma victims
- Due to massive displacement, the risk of vaccine preventable disease has increased, therefore a focus on immunization activities is needed
- Strengthening disease surveillance, to respond to any new outbreaks which might be caused due to displacement and environmental factors

### Response:

- CSSW is supporting 14 health facilities; operating 4 medical mobile clinics which will be mobilized further to cater to the needs of the newly displaced.
- UNFPA deployed a mobile clinical team through BFD which also covers Al Jamaha camp.

### Gaps and Constraints:

- Poor telecommunication services hinder timely communication between UNFPA and partners in the field.

### Stock Availability

What	Quantity	Location
IEHKs, DDKs	8	Sana'a

## Protection

### Needs:

- In Sanaa, cluster partner carried out Rapid Protection Assessment (RPA) at community center in Beni Al Khushush. The findings of the RPA indicated the need for protection cash assistance to cover high and immediate protection risks for 23 HHs in addition to previously identified 45 HHs. 6 HHs require IDs to access services.
- In Al-Jawf, in Al-Matoot and Al-Hazm districts, a cluster partner (NNGO) is assessing humanitarian and protection needs in Al-Jawf.
- In addition to psychological support, safe spaces are needed for traumatized women and children affected by displacement.
- Need to conduct a child protection (CP) assessment to identify children in need and specify their needs.
- Need to define clearly the needs of IDPs and host communities to avoid conflict in the communities.
- Family separation.

### Response:

- In Sanaa, a NNGO provided psychosocial to 23 HHs and individual psychosocial support for 3 cases.

- A NNGO will distribute 1,000 dignity bags as part of the emergency response.
- In Al Jawf, protection services including protection cash assistance is being provided for 48 HHs, legal assistance services provided to 14 individuals such as legal counselling and civil documentation (documentation support of 6 national IDs, 12 birth certificates are under process). In addition, private and group PPS awareness sessions in the Child-Friendly Spaces are provided to 96 children while Mine Risk Education (MRE) sessions are provided to 73 individuals. Protection monitoring is ongoing to assess the needs and for protection services provision.

**Gaps and Constraints:**

- In Al-Jawf, communication services are poor and internet connection is almost non-existent.
- Field movements hindered by clashes.

## Education

---

**Needs:**

- Assessments and verifications ongoing.