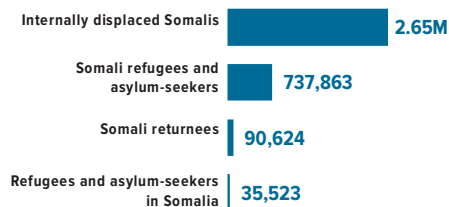




3.51 MILLION
PERSONS OF CONCERN
SOMALIA SITUATION

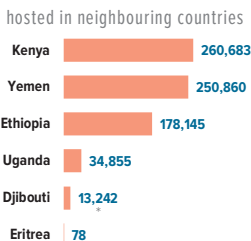


As of September 2019, Somalia was host to 35,523 registered refugees and asylum seekers, mainly from Ethiopia and Yemen.

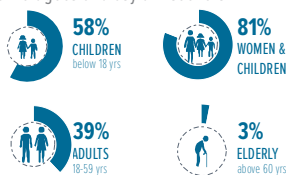
Over 90,000 Somali refugees have voluntarily returned to Somalia since December 2014 with UNHCR assistance from different countries of asylum including Kenya, Yemen, Djibouti, Libya, Tunisia and Eritrea. In addition, some 38,000 Somalis were monitored as arriving from Yemen since March 2015.

737,863

SOMALI REFUGEES AND ASYLUM-SEEKERS

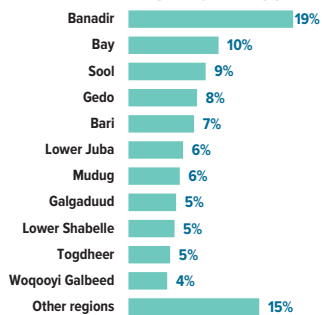


AGE AND GENDER COMPOSITION of refugees and asylum-seekers



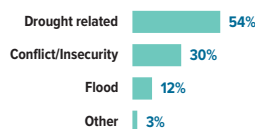
2.65 MILLION

INTERNALLY DISPLACED IN SOMALIA



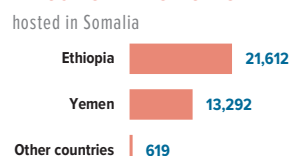
Estimated IDP statistics, Somalia Information Management Working Group, June 2018

REASONS FOR DISPLACEMENT



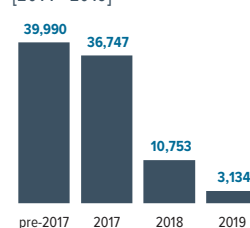
35,523

REFUGEES AND ASYLUM-SEEKERS

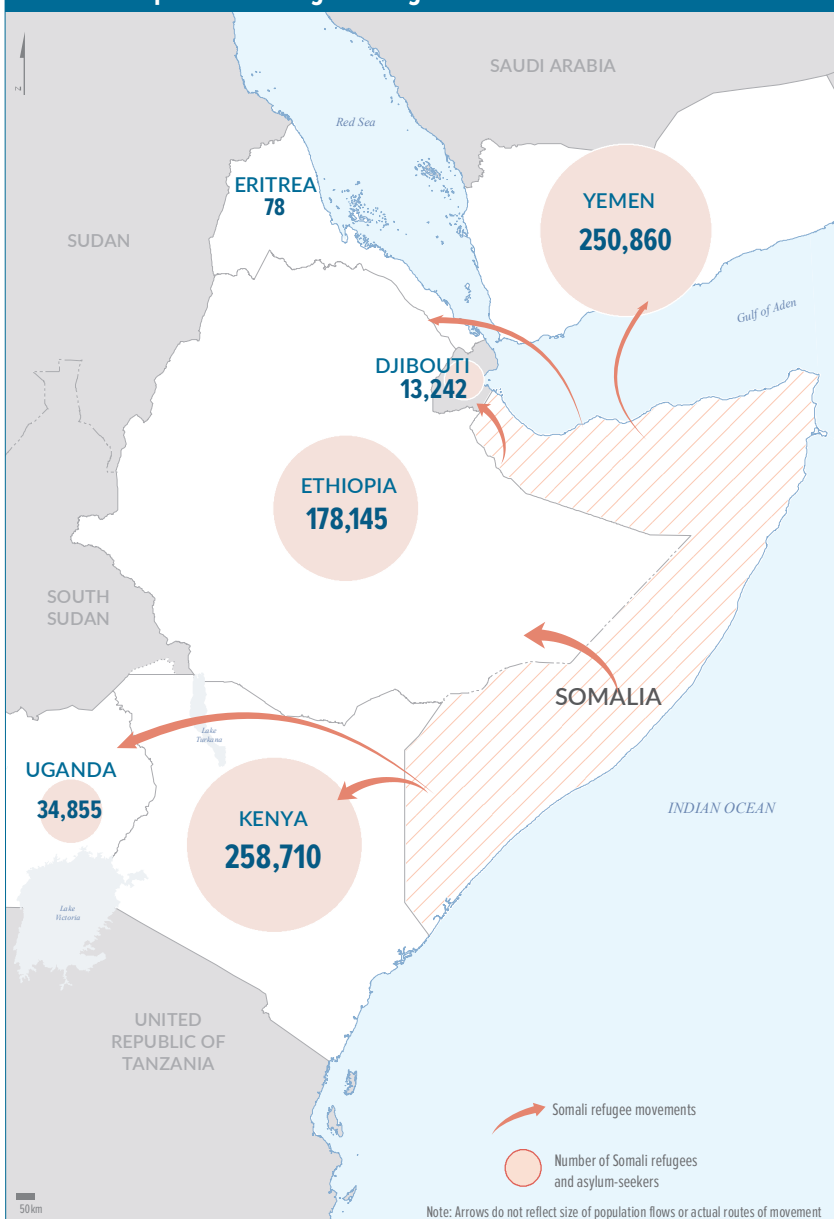


90,624

SOMALI REFUGEE RETURNÉES [2014 - 2019]



SOMALIS displaced into neighbouring countries



Population of concern to UNHCR in SOMALIA

2.65 MILLION
INTERNALLY DISPLACED PERSONS

90,367

SOMALI REFUGEE RETURNÉES [2014 - 2019]

35,321

REFUGEES AND ASYLUM-SEEKERS



Region	IDPs	Refugee returnees	Refugees and asylum-seekers
Awdal	26,000	-	230
Bakool	48,000	-	-
Banadir	497,000	19,671	3,440
Bari	198,000	233	8,878
Bay	272,000	9,565	-
Galgaduud	144,000	18	-
Gedo	207,000	2,955	-
Hiraan	78,000	69	-
Lower Juba	165,000	54,515	7
Lower Shabelle	139,000	150	150
Middle Juba	40,000	1,540	-
Middle Shabelle	51,000	850	13
Mudug	155,000	48	854
Nugaal	60,000	53	1,737
Sanaag	92,000	-	9
Sool	233,000	-	224
Togdheer	126,000	-	10
Woqooyi Galbeed	117,000	617	405
Other	-	340	19,566
TOTAL	2,648,000	90,624	35,523

The boundaries and names shown and the designations used on this map do not imply official endorsement or acceptance by the United Nations. *Final boundaries between the Republic of Sudan and the Republic of South Sudan and Somalia. Figures shown are provisional and subject to change.*