

HIGHLIGHTS (2 hours ago)

- Humanitarian Fund brings change in the lives of 2.9 million people
- More than 3,300 internally displaced people return to Baliet County, Upper Nile
- Almost 7 million people facing critical lack of food
- South Sudan appeals for \$12 million to prevent Ebola
- Lack of water displaces thousands of people to Mogos, Kapoeta East, Eastern Equatoria



Displaced people in Melut boarding truck to return to their places of origin in Baliet County. Credit: IOM

KEY FIGURES

7.2M

People in need

5.7M

People targeted

1.9M

Internally displaced people

6.96M

Severely food insecure (May-Jul)

FUNDING (2019)

\$1.5B

Required

\$580.5M

Received



39%

Progress

FTS: <https://fts.unocha.org/appeals/713/summary>

CONTACTS

Stephen O'Malley

Head of Office

omalley@un.org

Emmi Antinoja

Head of Communications and Information Management

antinoja@un.org

EMERGENCY RESPONSE (20 hours ago)

South Sudan: Humanitarian Fund brings change in the lives of 2.9 million people

The South Sudan Humanitarian Fund (SSHF) made an enormous difference for 2.9 million people in 2018. About 1.3 million of them were women and girls.

A broad range of UN agencies and NGOs apply for and receive funding from the SSHF to implement projects addressing identified priority needs.

Last year the Fund supported 225 projects implemented by 87 national and international partners. This enabled humanitarian organizations to save lives through timely and multi-sector assistance, alleviating acute needs, reinforcing protection, promoting access to basic services, and supporting the capacities of at-risk communities to cope with

significant threats to lives, livelihoods and well-being. Of \$53.4 million allocated in 2018, 39 per cent – or \$20.6 million – went to local NGOs.

In 2018, the SSHF funded 19 projects aimed to help survivors of gender-based violence recover physically and psychologically from the trauma and gain access to emergency and life-saving services.

In an internal displacement camp in Mundri, Western Equatoria region, the Mundri Active Youth Association (MAYA) set up a woman and girl-friendly space, which provides support for up to 4,000 individuals. As women and girls in the camp remained exposed to risks of harassment, abuse and assault, MAYA initiated a series of information sessions to educate men and boys to what constitutes gender-based violence, why women and men should equally participate in decision-making processes, and how to prevent gender-based violence.



Community members discuss gender-based violence as they enjoy a cup of coffee in Mundri, Western Equatoria. Credit: Active Youth Association/Achan

Thanks to funding from the SSHF, MAYA helped 48-year-old Esther, one of the displaced women living in the Mundri camp, set up a coffee shop where every Friday she organizes informal get-togethers over coffee and talks about gender issues with community members. Esther knows her community members, and her work paid off. On average, 45 people attend each session and the conversations are getting more and more participatory and engaged, especially around the safety and the integrity of women and girls.

In the wake of the Ebola Virus Disease outbreak in the Democratic Republic of the Congo and the heightened risk of its spread into South Sudan, the SSHF allocated \$2 million to support the timely implementation of Ebola prevention and preparedness activities, in complementarity with bilateral funding sources and a boost from the UN's Central Emergency Response Fund.

This year, the implementation of the 2018 Revitalized Agreement on the Resolution of the Conflict offers the prospect of new opportunities to promote recovery and development for the people of South Sudan. For the time being, however, the humanitarian situation remains serious and 7.2 million people need emergency assistance.

The SSHF will continue to support the implementation of frontline services to address the humanitarian consequences of years of conflict, violence and destroyed livelihoods.

This requires sustained support from donors. Last year, the SSHF received US\$ 88.9 million from 13 donors, ranking the fourth highest among the 18 Country-Based Pooled Funds (CBPF) around the world. Annual contributions to the SSHF have increased over the last three years, from \$58 million in 2016 to \$78 million in 2017 and \$89 million in 2018.

To date in 2019, donors have already contributed \$24.3 million to the Fund in donations. More funding is needed to ensure the SSHF can continue allocating resources so people can receive the help they need, when and where they need it.

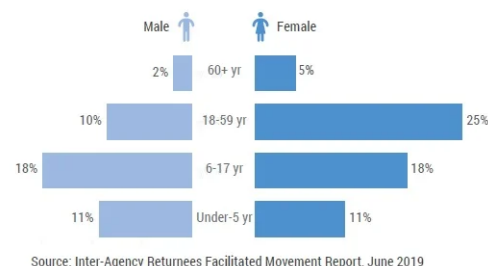
EMERGENCY RESPONSE (4 days ago)

More than 3,300 internally displaced people return to Baliet County, Upper Nile

A total of 3,324 internally displaced people, mainly women and children, have returned from Melut to their places of origin in Baliet County in Upper Nile. The return exercise was conducted between 7 and 28 May 2019, spearheaded by the Upper Nile Solutions Working Group. The joint approach involving humanitarian organizations, UNMISS and the

government helped minimize the cost of the return and was the first movement of displaced people of this scale out of a settlement site in Upper Nile.

The effort to relocate the families followed an appeal by IDPs in five settlements in Melut town to the government to be returned to their homes. The reasons cited by the displaced people included family reunion and relatively improved security situation in most parts of Upper Nile, including Baliet County. Due to the lack of resources to relocate the IDPs, the government requested UNHCR to facilitate the exercise. UNHCR conducted surveys and verification exercises to ascertain people's intentions.



Returnee population by age and sex

Humanitarian organizations provided trucks for the movement of the displaced people and a three month food ration, essential household items and emergency shelter, and sanitation and hygiene materials. In addition, access to health, education, safe water and livelihood opportunities, including fishing and agriculture, were scaled up to ensure the returnees could easily reintegrate with their host communities.

Other response activities prior to the movement included setting up transit sites and sensitizing the host community on peaceful co-existence. The road through which the convoy travelled and the return areas were assessed by a mine action team, which also provided mine education to the returnees on arrival.

The government ensured the safety and security of the displaced people during the return process. In Baliet, local authorities assisted in managing the reception sites and provided warehouse facilities free of charge for temporary storage of humanitarian supplies. The authorities issued a letter of assurance prior to the exercise and ensured that there were no checkpoints along the road.

The host communities and community leaders played an important role in receiving the returnees. They ensured that everyone, including persons with special needs, received due attention and were assisted in a proper manner.

ANALYSIS (14 days ago)

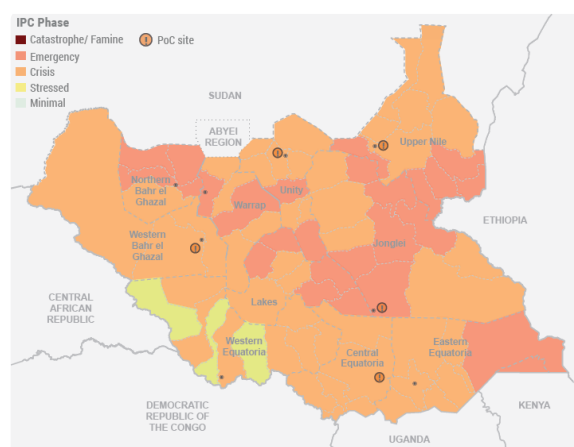
Almost 7 million people facing critical lack of food

The number of people likely to face acute food insecurity in South Sudan by the end of July has risen to the highest level yet, with an estimated 6.96 million people – 61 per cent of the South Sudanese population – affected, UN agencies have warned.

According to the Integrated Food Security Phase Classification (IPC), by the end of July, 21,000 people will face a catastrophic lack of food access.

Another 1.82 million people will be a step away from catastrophic food insecurity. Further, over 5 million people will face Crisis levels of food insecurity.

About 81,000 more people than originally estimated in a January forecast for May to July are facing Crisis levels of food insecurity or worse, particularly in Jonglei, Lakes, Unity and Northern Bahr el Ghazal.



IPC acute food insecurity (May-July)

Poor harvest in 2018 meant that the lean season – when people do not have enough food stocks to eat – started earlier this year. Delayed seasonal rains, that came in late May, compounded the situation. South Sudan's harvest is largely dependent on rains.

Persistent economic instability, the impacts of previous years of conflict, and related asset depletion and population displacements have added to the disruption of livelihoods and reduced people's access to food.

"This update to the IPC reveals that much more work needs to be done. The recovery of food production and increased yields in South Sudan are reliant on the maintenance of peace, and must be given a chance," said Meshack Malo, the Food and Agriculture Organization's Representative in South Sudan.

"With greater stability in the country, access to those in need has improved, allowing us to treat more than 100,000 children suffering from severe malnutrition in the first five months of the year, with more than 90 per cent of those children recovering," said Mohamed Ag Ayoya, UNICEF's Representative in South Sudan. "But malnutrition levels remain critical in many areas and our fear is that the situation could worsen in the coming months."

"The hunger season coincides with the rainy season and that's a perfect storm in South Sudan," said Ronald Sibanda, WFP's Country Director in South Sudan. "As we ramp up our response, the race is now against time and nature – we must act now to save the lives and livelihoods of the millions on the brink of starvation."

The three UN agencies called for effective implementation of the late-2018 revitalized peace agreement to allow scaled-up humanitarian assistance and to boost agricultural production across the country.

FEATURE (15 days ago)

South Sudan appeals for \$12 million to prevent Ebola

On 13 June, the Ministry of Health together with the United Nations and its partners launched an updated Ebola Virus Disease preparedness plan to prevent the disease spreading from neighbouring countries and prepare for a possible outbreak in the country. The plan requires \$12.2 million and will be implemented between April and September 2019.

The launch occurred only two days after the first Ebola case was confirmed in neighbouring Uganda, and more cases have been confirmed since. In the Democratic Republic of the Congo, the number of cases has surpassed 2,000. The World Health Organization has assessed the risk of the disease spreading to South Sudan as 'very high.'

Prioritized activities in the plan include improving the existing surveillance system with a greater focus on community-based surveillance, scaling up training for front-line health workers, increasing the number of isolation units, and expanding risk communication and community mobilization. In addition, a 72-hour outbreak response and containment plan and vaccine readiness strategy will be put in place.

"The cases in Uganda were detected early, thanks to the preparedness measures in place. [This] sends the message that investing in prevention and preparedness is not only the right thing to do, it is the smart thing to do," said acting Humanitarian Coordinator for the United Nations in South Sudan, Dr. Olushayo Olu. "The cost of a fully-fledged



Aid workers at a newly opened Ebola screening site in Bori border entry point, Kajo-Keji County. Credit: IOM

outbreak is staggering compared to prevention, and would include immense human suffering, long-term economic damage, and further depletion of an already weak healthcare system. We cannot allow it to happen."

ANALYSIS (21 days ago)

Lack of water displaces thousands of people to Mogos, Kapoeta East, Eastern Equatoria

Humanitarian organizations report that up to 5,700 people have been displaced from Lopeat and Kassengor to Mogos, in Kapoeta East County, due to a chronic lack of water and other basic services.

The people, mainly women and children, are said to be living in makeshift shelters under trees.

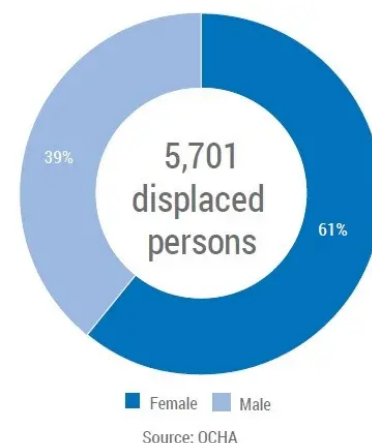
"We ran to this place because of lack of water in our village. Children are drinking and washing with dirty water. Many children have diarrhoea and coughs and there are no medicines," said one woman in Mogos.

In addition to water and health services, the people's main needs are food, emergency shelter and essential household supplies.

Kapoeta East is projected to be facing 'emergency' food insecurity (Integrated Food Security Phase Classification Phase 4) in the May-July period, even in the presence of humanitarian food assistance.

Humanitarian organizations plan to increase response in the area. A key priority is to ensure the population has access to safe water by distributing water purification materials and water containers, and repairing hand pumps.

Prior to the displacement, more than 4,500 people out of the 5,700 displaced people received a 15-day food assistance ration in Lopeat and Kassengor. Food distribution to the same people will continue until July. Health care and nutrition services, including screening and treatment of severe and moderate acute malnutrition, are ongoing.



Displaced people in Mogos by sex

FEATURE (32 days ago)

Increased food pre-positioning as the rainy season starts

Humanitarian organizations have scaled-up pre-positioning of supplies across South Sudan before rains intensify and roads become impassable. Nearly 60 per cent of the country will become inaccessible over the coming five months, and the concluding dry season offers a critical window to pre-position essential relief items.

From January to May 2019, the World Food Programme (WFP) pre-positioned almost 172,000 metric tons in 60 different locations across South Sudan. This is 98 per cent of the 175,000 metric ton target, and 60,000 metric tons more than in the same period last year.



WFP trucks on the road in Bentiu, Unity, in April 2019. Credit: WFP

WFP has also expanded the storage capacity in hard-to-reach areas. At least 54 mobile storage units have been deployed in Unity and Jonglei, increasing current storage capacity by 25,000 metric tons.

As the planting season intensifies, organizations working on food security and livelihoods have also accelerated their efforts to get vital seeds, agricultural tools and other materials to some of the most vulnerable communities across the country.

MEDIA (90 days ago)



View this video at: <https://www.youtube.com/watch?v=PaemJosmpBA>

We asked people who fled their homes because of the conflict in South Sudan to tell us about their lives. Watch this video, and hear what they said.

For more information see:

<https://www.unocha.org/south-sudan>

<https://www.humanitarianresponse.info/en/operations/south-sudan>

<https://reliefweb.int/country/ssd>

[About](#) [Privacy policy](#) [Copyright notice](#)

