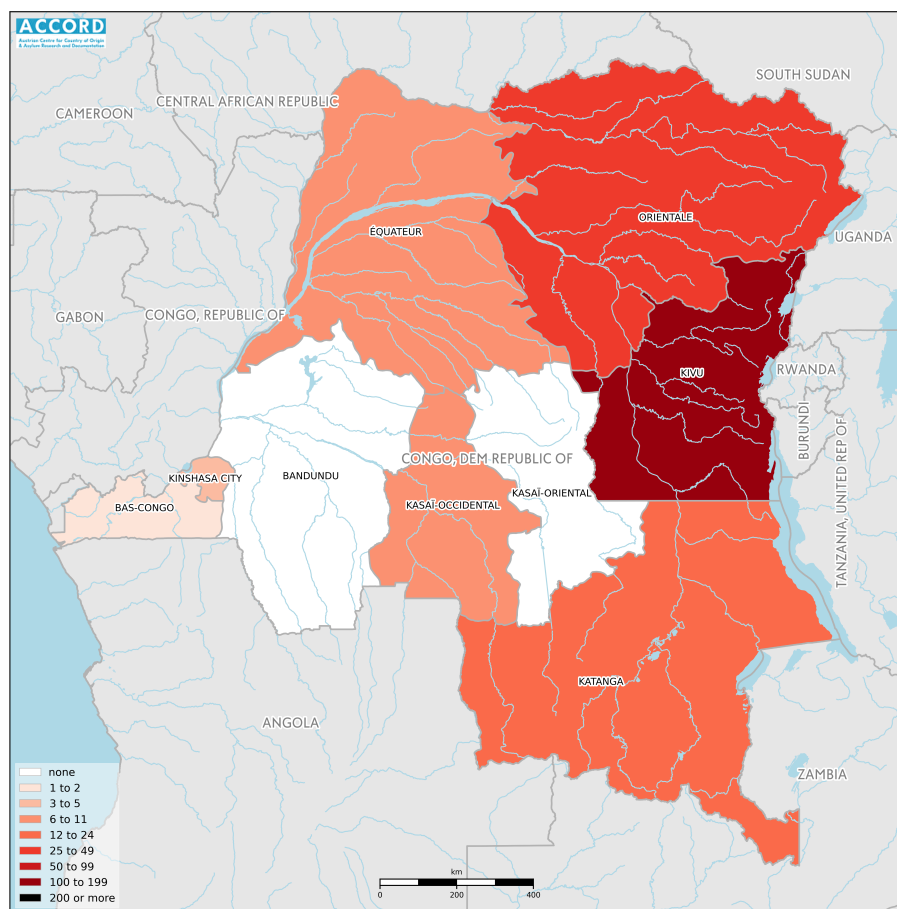


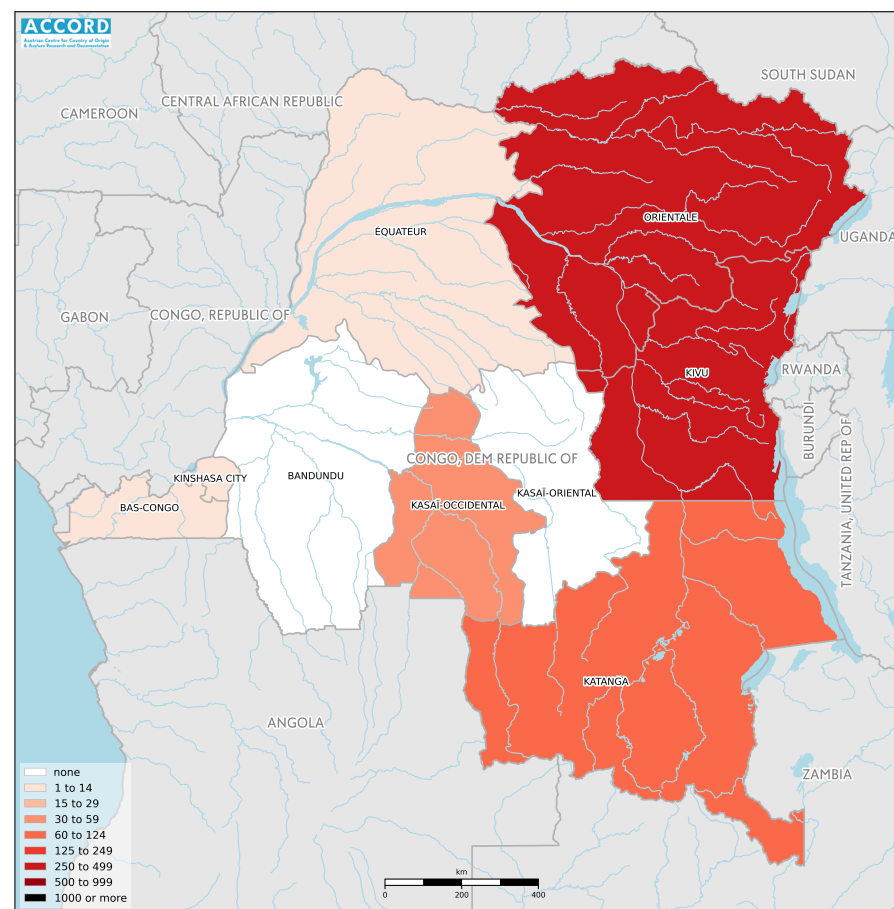
# DEMOCRATIC REPUBLIC OF CONGO, FIRST QUARTER 2018:

Update on incidents according to the Armed Conflict Location & Event Data Project (ACLED) - Updated 2nd edition compiled by ACCORD, 20 December 2018

## Number of reported incidents with at least one fatality



## Number of reported fatalities



National borders: [GADM, November 2015b](#); administrative divisions: [GADM, November 2015a](#); incident data: [ACLED, 15 December 2018](#); coastlines and inland waters: [Smith and Wessel, 1 May 2015](#)

## Contents

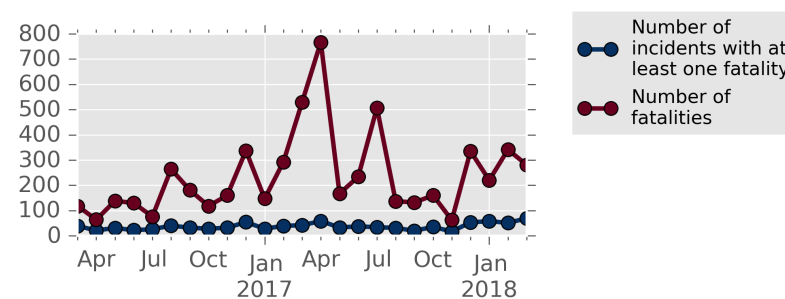
Number of reported fatalities	1
Number of reported incidents with at least one fatality	1
Conflict incidents by category	2
Development of conflict incidents from March 2016 to March 2018	2
Methodology	3
Conflict incidents per province	4
Localization of conflict incidents	4
Disclaimer	5

## Conflict incidents by category

Category	Number of incidents	Number of incidents with at least one fatality	Number of fatalities
Battles	166	89	508
Violence against civilians	139	84	322
Riots/protests	43	5	12
Strategic developments	41	0	0
Headquarters established	1	0	0
Non-violent activities	1	0	0
Remote violence	1	0	0
Total	392	178	842

This table is based on data from ACLED (datasets used: [ACLED](#), 15 December 2018).

## Development of conflict incidents from March 2016 to March 2018



This graph is based on data from ACLED (datasets used: [ACLED](#), 15 December 2018).

## Methodology

The data used in this report was collected by the Armed Conflict Location & Event Data Project (ACLED). ACLED collects data on reported conflict events in selected African and Asian countries, Democratic Republic of Congo being among them. ACLED researchers collect event data from a variety of sources and code them by date, location, agent, and event type.

Most of the data collected by ACLED is gathered based on publicly available, secondary reports. It may therefore underestimate the volume of events. Fatality data particularly is vulnerable to bias and inaccurate reporting, and ACLED states to use the most conservative estimate available. ACLED uses the reports' context to estimate fatalities for events with reported fatalities for which the exact number is unknown ("10" for plural fatalities, "100" if "hundreds" are mentioned, etc.). For further details on ACLED and for the full data, see [www.acleddata.com](http://www.acleddata.com) and Raleigh; Linke; Hegre, and Karlsen, 2010.

Based on this data, the Austrian Centre for Country of Origin & Asylum Research and Documentation (ACCORD) compiles updates on conflict incidents and publishes them on [ecoi.net](http://ecoi.net) to offer another access point to the ACLED datasets.

This 2nd edition replaces the previously published overviews on the same reporting period and is based on updated ACLED data.

It is advised to employ extreme caution when using fatality numbers.

Assessments of the security situation should not be based solely on quantitative analysis of event data.

The two maps above serve to compare the number of reported fatalities (potentially containing estimates) to the number of events with reported fatalities.

Geographic map data is primarily based on GADM, complemented with other sources if necessary. ACLED's location data is then used to locate incidents in these maps. Incidents that could not be located are ignored. The numbers included in this overview might therefore differ from the original ACLED data. ACLED uses varying degrees of geographic precision for the individual incidents, depending on what level of detail is reported. Thus, towns may represent the wider region in which an incident occurred, or the provincial capital may be used if only the province is known. Erroneous location data, especially due to identical place names, cannot be fully excluded.

Incidents comprise the following categories: battles, headquarters or bases established, non-violent strategic activities, riots/protests, violence against civilians, non-violent transfer of territory, remote violence. For details on these categories, please see

- ACLED – Armed Conflict Location & Event Data Project: Armed Conflict Location and Event Data Project (ACLED) Codebook; ACLED - ASIA, 2015  
[http://www.acleddata.com/wp-content/uploads/2015/07/ACLED\\_Codebook\\_2015\\_ASIA-CR.pdf](http://www.acleddata.com/wp-content/uploads/2015/07/ACLED_Codebook_2015_ASIA-CR.pdf)
- ACLED – Armed Conflict Location & Event Data Project: Armed Conflict Location and Event Data Project (ACLED) Codebook, 2017  
[http://www.acleddata.com/wp-content/uploads/2017/01/ACLED\\_Codebook\\_2017.pdf](http://www.acleddata.com/wp-content/uploads/2017/01/ACLED_Codebook_2017.pdf)
- ACLED – Armed Conflict Location & Event Data Project: User Guide, January 2017  
[http://www.acleddata.com/wp-content/uploads/2017/01/ACLED\\_User-Guide\\_2017.pdf](http://www.acleddata.com/wp-content/uploads/2017/01/ACLED_User-Guide_2017.pdf)

## Conflict incidents per province

Province	Number of incidents	Number of incidents with fatalities	Number of fatalities
Bandundu	2	0	0
Bas-Congo	3	1	10
Kasai-Occidental	20	11	45
Kasai-Oriental	3	0	0
Katanga	32	12	67
Kinshasa City	13	3	10
Kivu	221	102	376
Oriental	88	43	328
Équateur	10	6	6

## Localization of conflict incidents

**Note:** The following list is an overview of the incident data included in the ACLED dataset. More details are available in the actual dataset (date, location data, event type, involved actors, information sources, etc.). The data's precision varies among the incidents: a town may represent a region, or the provincial capital may be used if the precise location of an incident is unknown. In the following list, the names of event locations are taken from ACLED, while the administrative region names are taken from GADM data which serves as the basis for the maps above.

In **Bandundu**, 2 incidents killing 0 people were reported. The following locations were among the affected: **Kikwit, Mongala**.

In **Bas-Congo**, 3 incidents killing 10 people were reported. The following

locations were among the affected: **Kitona, Matadi, Moanda**.

In **Kasai-Occidental**, 20 incidents killing 45 people were reported. The following locations were among the affected: **Dekese, Demba, Dibaya, Kakenge, Kananga, Kananga Airport, Luebo, Luiza, Mweka**.

In **Kasai-Oriental**, 3 incidents killing 0 people were reported. The following location was among the affected: **Mbuji Mayi**.

In **Katanga**, 32 incidents killing 67 people were reported. The following locations were among the affected: **Bendera, Kalembe, Kalima, Kambamba, Kamina, Kasumbalesa, Kayumba, Kilembwe, Kisiki, Kongolo, Lambo Katanga, Lubumbashi, Manga, Mazonde, Numbi, Pweto, Rwashi, Tanganyika**.

In **Kinshasa City**, 13 incidents killing 10 people were reported. The following locations were among the affected: **Bandalungwa, Gombe, Kinshasa**.

In **Kivu**, 221 incidents killing 376 people were reported. The following locations were among the affected: **Baraka, Beni, Bogabo, Bukavu, Bulenga, Bunyakiri, Butembo, Bwalanda, Eringiti, Fizi, Goma, Ishasha, Izege, Kabare, Kabasha, Kahunga, Kahuzi-Biega National Park, Kalehe, Kalembe, Kalole-Mapeto, Kalungu, Kamanyola, Kanyatsi, Kasindi, Katanga, Katsiru, Katwiguru II, Kavumu, Kazimia, Kibati, Kibirizi, Kihoma, Kikuku, Kiliba, Kinyandoni, Kipese, Kisikivi, Kisoro, Kiteraga, Kitumba, Kiwanja, Kokola I, Lemera, Linzo Sisene I, Lubero, Lubondja, Lulimba, Lulingu, Lwibo, Makungulano, Masisi, Matanda, Mavivi, Mayimoya, Mbau, Miriki, Muhangi, Mukaka, Mukangi, Mulima, Murambi, Musasa, Mutambala, Mutanda, Mutarule, Mutongo, Mwalika, Nemba, Ngite, Nkwenda, Nyaleke, Nyanzale, Oicha, Paida, Pinga, Rutshuru, Rwenzori, Sake, Sesele, Shabunda, Ubwari Peninsula, Uvira, Virunga National Park, Vuhombwe, Walikale, Walungu**.

In **Oriental**, 88 incidents killing 328 people were reported. The following

locations were among the affected: **Adjo, Ako, Ango, Aru, Bambangana, Bangadi, Basoko, Blukwa, Bondo, Bunia, Buta, Djugu, Dungu, Ebale, Faradje, Fataki, Gbitihi, Gina, Gobu, Gurba, Gwane, Irumu, Isangi, Ituri, Kanyasi, Kisangani, Lidjo, Lita, Loga, Lokutu, Malili, Mambasa, Mambisa, Nizi, Rodo, Sisa, Songolo, Sukadi, Talolo, Tshopo.**

In **Équateur**, 10 incidents killing 6 people were reported. The following locations were among the affected: **Budjala, Gemena, Kungu, Mbandaka, Yakoma.**

## Sources

- ACLED – Armed Conflict Location & Event Data Project: Africa 1997-present (Data through 17 November 2018), 15 December 2018  
<https://www.acleddata.com/download/2909/>
- GADM – Global Administrative Areas: COD\_adm.zip, Version 2.8, November 2015a  
[http://biogeo.ucdavis.edu/data/gadm2.8/shp/COD\\_adm.zip](http://biogeo.ucdavis.edu/data/gadm2.8/shp/COD_adm.zip)
- GADM – Global Administrative Areas: gadm28\_levels.shp, Version 2.8, November 2015b  
[http://biogeo.ucdavis.edu/data/gadm2.8/gadm28\\_levels.shp.zip](http://biogeo.ucdavis.edu/data/gadm2.8/gadm28_levels.shp.zip)
- Raleigh, Clionadh; Linke, Andrew; Hegre, Håvard, and Karlsen, Joakim: "Introducing ACLED-Armed Conflict Location and Event Data", in: Journal of Peace Research (47(5) 2010 ), pp. 651–660  
<http://jpr.sagepub.com/content/47/5/651.full.pdf+html>
- Smith, Walter H. F. and Wessel, Paul: Global Self-consistent Hierarchical High-resolution Geography (GSHHG), Version 2.3.4, 1 May 2015  
<https://www.ngdc.noaa.gov/mgg/shorelines/data/gshhg/latest/>

## Disclaimer

Event data may be revised or complemented in future updates. Updates in ACLED's datasets will not necessarily be reflected in ACCORD's reports if the update occurs close to or after the latter's publication. Changes in the sources used by ACLED to collect incident data might affect the comparability of data over time. For more information on ACLED's methodology, please see [www.acleddata.com/resources/methodology/](http://www.acleddata.com/resources/methodology/). For more information on ACCORD's products based on the data,

please see the [ecoi.net blog posts tagged with "ACLED"](#). The lack of information on an event in this report does not permit the inference that it did not take place. The boundaries and names displayed do not imply endorsement or acceptance by the Austrian Red Cross.

#### **Cite as**

- ACCORD – Austrian Centre for Country of Origin & Asylum Research and Documentation: Democratic Republic of Congo, first quarter 2018: Update on incidents according to the Armed Conflict Location & Event Data Project (ACLED) - Updated 2nd edition, 20 December 2018