

IDLEB & SURROUNDING AREAS⁷

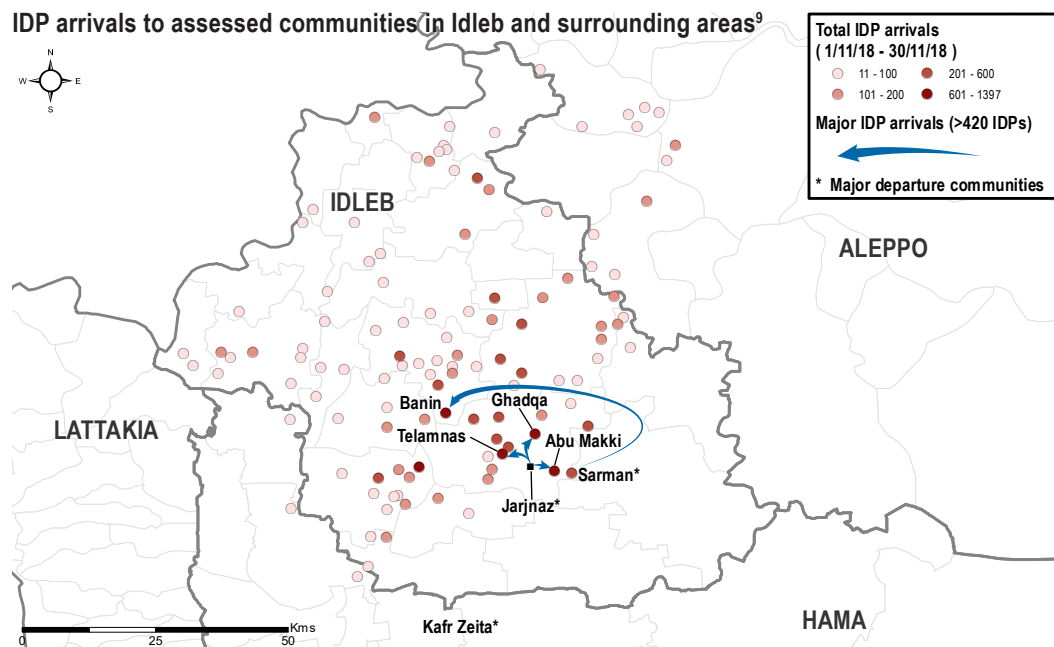
Key Figures

Communities assessed:	222
Total IDP arrivals:	16,417 (+49%)
Sub-districts with most arrivals (# IDPs):	
Ma'arrat An Nu'man	5,439
Saraqab	2,236
Ariha	2,047
Kafr Nobol	1,815
Maaret Tamsrin	781
Total IDP departures:	
35,783 (+51%)	
Sub-districts with most departures (# IDPs):	
Ma'arrat An Nu'man	14,593
Dana	4,619
Heish	3,467
Badama	2,797
Tamanaah	1,784

Overview

Following a sharp decrease in the total number of displacements reported in the region from September to October, **several areas of opposition-held Idleb, western Aleppo and northern Hama governorates witnessed renewed large displacements throughout November.** Notably, substantial IDP departure waves were reported from assessed locations in **Ma'arrat An Nu'man (14,593) sub-district** in southern Idleb, propelled by **aerial bombardments on Jarjnaz (12,107) and neighbouring communities.**⁵

Other major displacements were also concentrated in southern, central and western Idleb, as well as western Aleppo governorates. These were triggered predominantly by **intermittent clashes and localised exchanges among armed groups** in many parts of the DMZ.⁸ KIs reported that IDP arrivals to many areas were driven by **escalations of ground-based conflict and aerial bombardment.** Throughout November, many IDPs were reportedly displaced to locations in which **family or host community ties** were available, and which were in close proximity to their areas of origin.



IDP Arrivals

More than two thirds (70%) of the 16,417 IDP arrivals in the region reported in November were to assessed locations in **Ma'arrat An Nu'man (5,439), Saraqab (2,236), Ariha (2,047) and Kafr Nobol (1,815) sub-districts**, all located in central and southern Idleb governorate.

Last sub-district of departure of arrivals (# IDPs):

Ma'arrat An Nu'man	7,827
Tamanaah	1,397
Heish	1,051
Sanjar	606
Zarbah	509

At the community-level, **Telamnas (1,397) and Ghadqa (952)** in Ma'arrat An Nu'man sub-district, as well as **Has (884)** in Kafr Nobol, experienced the highest IDP arrivals. Many IDPs arriving to these areas reportedly came from nearby communities.

Vulnerable groups among IDP arrivals:¹⁰



Most common push factors of IDP arrivals:¹¹

	1st	2nd	3rd
Escalation of ground-based conflict	43	4	4
Loss of income	18	16	15
Anticipation of future conflict escalation	6	31	4
Escalation of aerial bombardment	28	8	0
Loss of assets	0	16	17

All IDPs arriving to Telamnas were reportedly displaced from **Jarjnaz community**, triggered by **sustained aerial bombardments**, particularly in the second half of the month.⁵

Most common pull factors of IDP arrivals:¹¹

	1st	2nd	3rd
Safety and security situation	65	16	4
Family ties/host community relationship	27	17	13
Access to shelter/shelter support	8	16	16
Access to humanitarian assistance	1	18	17
Access to income/employment opportunities	7	10	12

KIs reported that the priority needs of IDPs arriving from Jarjnaz were **safety and security, shelter, food, winterisation and non-food items (NFIs).**

IDP Departures

In parallel, the **total number of IDP departures (35,783)** reported from assessed communities in the region between 1 and 30 November **increased by 51%** compared to October.¹² **More than a third (38%) of these were primary displacements**, in contrast to just 2% of the previous month's total reported departures. **All primary displacements reported in November were from just 15 assessed communities, in Al Ma'ra and Idleb districts.**

Top intended destination sub-districts (# IDPs):

Ma'arrat An Nu'man	5,499
Afrin	2,379
Badama	2,373
Dana	2,018
Madiq Castle	2,002

Following aerial bombardments on Jarjnaz,⁵ a total of 3,568 IDPs and 8,539 residents reportedly left the community, accounting for 27% of all departures tracked in north-west Syria over the reporting period. Substantial departures were also reported from elsewhere in Ma'arrat An Nu'man sub-district, namely **Sarman (1,140) and Maasaran (855) communities.** Furthermore, **Tah community** in Heish sub-district witnessed significant IDP departures (**2,583**), following similar intensifications of violence.

Additionally, **large-scale secondary displacements** were reported from **Dana (4,619) sub-district** in northern Idleb governorate. KIs reported many of these to be **people returning communities they were formerly displaced from in Jisr-Ash-Shugur, Ma'arrat An Nu'man and Madiq Castle sub-districts**, following perceived improvements in the safety and security situations of these areas.

⁷ Idleb governorate's surrounding areas include communities in Atareb, Daret Azza, Haritan, Jebel Saman and Zarbah sub-districts in western Aleppo governorate, as well as in Kafr Zeita, Madiq Castle, Suran and Ziyara sub-districts in northern Hama. These sub-districts have been added to the larger Idleb and surrounding areas region as populations in these sub-districts demonstrate similar movement patterns and are served by the same cross-border responses.

⁸ Reuters, 'Rebels say Syrian army steps up attacks in Idlib', November 17, 2018; Syria Live UA map, November 2018

⁹ Community markers also account for camps, informal settlements and other IDP sites when they are in close proximity to a community.

¹⁰ Vulnerable groups: ♀ Female-headed households/Women travelling alone

♂ Child-headed households ♀ Orphans ♀ Elderly-headed households/ Elderly travelling alone ♀ Disabled-headed households/Individuals with disabilities travelling alone.

¹¹ Number of accessible communities in which the most common push and/or pull factors for IDP arrivals were reported by KIs.

¹² Some tracked departures may be repeated displacements.

NORTHERN ALEPPO¹³

Key Figures

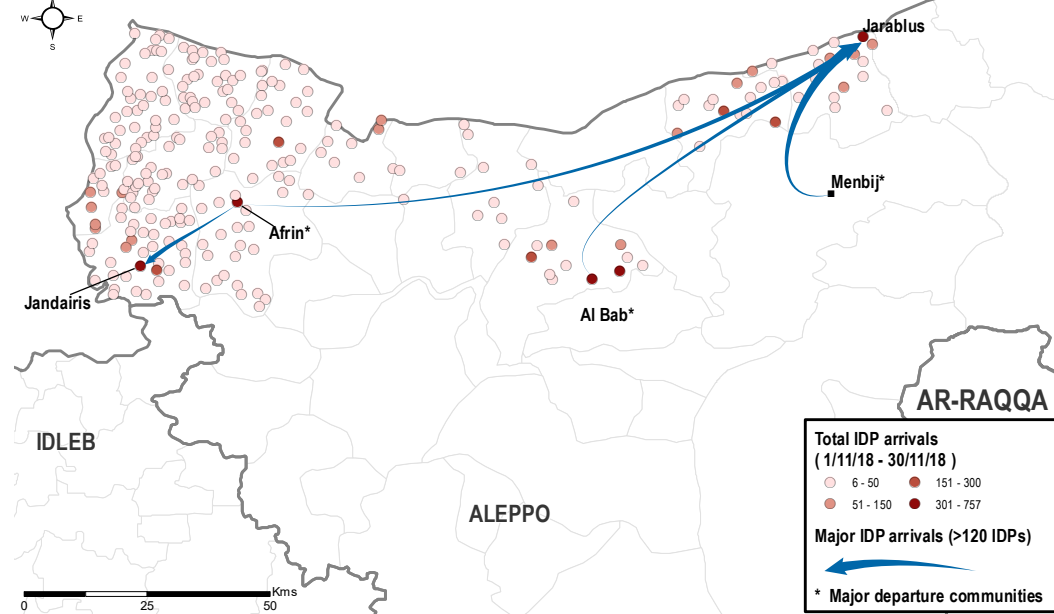
Communities assessed:	341
Total IDP arrivals:	8,624 (+14%)
Sub-districts with most arrivals (# IDPs):	
Jarablus	1,551
Al Bab	1,318
Jandairis	1,119
Afrin	904
Ghandorah	801
Total IDP departures:	8,866 (+10%)
Sub-districts with most departures (# IDPs):	
Al Bab	2,801
Jandairis	1,425
Afrin	1,261
Ghandorah	1,009
Jarablus	730

Overview

Throughout November, **ongoing insecurity, tensions among AOGs, and challenging humanitarian conditions** continued to drive new displacements across many parts of northern Aleppo governorate. As in previous months, **most IDP movements remained localised within the region**, with large intra-regional and intra-sub-district secondary displacements reported. However, large-scale IDP arrivals were also reported to assessed communities in the region from **conflict-affected parts of Idlib governorate**, such as **Ma'arrat An Nu'man sub-district**,⁵ as well as neighbouring territories in Aleppo governorate, such as **Menbij**.

An escalation in hostilities in the city of **Afrin** at the beginning of the month was followed by **widespread security and arrest operations**.⁶ These operations later progressed to affect several other parts of the region - most notably, **A'zaz, Al Bab and Jarablus** sub-districts.⁶ In tandem, November saw a heightening in the reported use of **improvised explosive devices (IEDs) near civilian areas**, with several cities in northern Aleppo - in particular **Jarablus** - being affected.¹⁴

IDP arrivals to assessed communities in the northern Aleppo region⁹



IDP Arrivals

In line with patterns seen in October, significant inflows of IDPs were reported throughout November to assessed communities in **Jarablus (1,551), Al Bab (1,318) and Jandairis (1,119)** sub-districts. Together, these three accounted for **almost half (46%) of the 8,624 total IDP arrivals** reported in the region.

At the community level, the region's **major cities and urban centres**, namely, **Jarablus (638), Afrin (507), Al Bab (473) and Jandairis (336)** experienced the highest numbers of IDP arrivals.

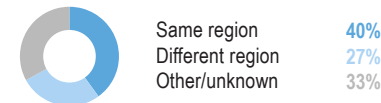
Last sub-district of departure of arrivals (# IDPs):

Al Bab	845
Afrin	801
Ghandorah	581
Jarablus	527
Ma'arrat An Nu'man	444

As in previous months, IDPs most commonly arrived from elsewhere within the northern Aleppo region (3,427). Al Bab (845) and Afrin

(801) were the most common last sub-districts of departure of IDP arrivals in November.

Last place of departure of IDP arrivals:



In addition, **1,545 IDPs** reportedly arrived from communities in neighbouring **Idlib governorate and surrounding areas**, more than half of whom from **Al Ma'ra (784)** district. Following displacement patterns expected in the event of a major escalation of conflict in the region,¹⁵ **1,308 (85%) of these were to communities in Afrin district**. A further **514 IDPs** were reported arriving to the region from **Menbij** district, west of the Euphrates river in north-east Aleppo governorate.

Top 3 shelter types of IDP arrivals:

(1) Solid/finished house	5,230 IDPs
(2) Individual tent	1,073 IDPs
(3) Managed camp	733 IDPs

Most common push factors of IDP arrivals:¹¹

	1st	2nd	3rd
Loss of income	80	46	42
Reduced access to shelter	15	44	40
Reduced access to food	12	50	30
Reduced access to humanitarian assistance	24	40	27
Anticipation of future conflict escalation	37	30	16

Loss of income, as well as reduced access to shelter and food were commonly reported by KIs as push factors for IDP arrivals. Meanwhile, KIs reported **safety and security as the first most common push factor for IDPs**, in 48% of communities of arrival.

Most common push factors of IDP arrivals:¹¹

	1st	2nd	3rd
Safety and security situation	126	18	16
Access to income/employment opportunities	43	81	35
Access to shelter/shelter support	26	60	45
Access to humanitarian assistance	9	44	31
Access to food	19	37	21

IDP Departures

Top intended destination sub-districts (# IDPs):

Ar-Raqqa	456
Al Bab	444
Jandairis	422
Menbij	410
Idlib	284

In contrast to the neighbouring Idlib region, a **higher proportion (80%) of the 8,866 IDP departures** in November from assessed communities in northern Aleppo were **secondary displacements**. Substantial secondary displacement waves were reported from **Al Bab (1,340), Jandairis (889) and Afrin (724)** communities, in addition to **large primary displacements from Jandairis (462)** community. KIs reported that various factors were driving these displacements, including **general insecurity, reduced access to humanitarian assistance, and opening of safe passages to elsewhere**.

¹³ Figures for the northern Aleppo region include accessible communities in the following sub-districts: Afrin, Aghtrin, Al Bab, Ar-Ra'ee, A'zaz, Bulbul, Ghandorah, Jandairis, Jarablus, Ma'atali, Mare', Rajju, Sharan, Sheikh El-Haddid and Suran.

¹⁴ Middle East Eye, 'Car bomb kills at least nine people, including civilians in Syria's Afrin', 16 December 2018; Arab News, 'Bomb in Turkish-controlled Syrian town kills 1, wounds 24', 12 November 2018.

¹⁵ CCCM/REACH, Idlib and Surrounding Areas: Population Movement Intentions Overview, August-September 2018