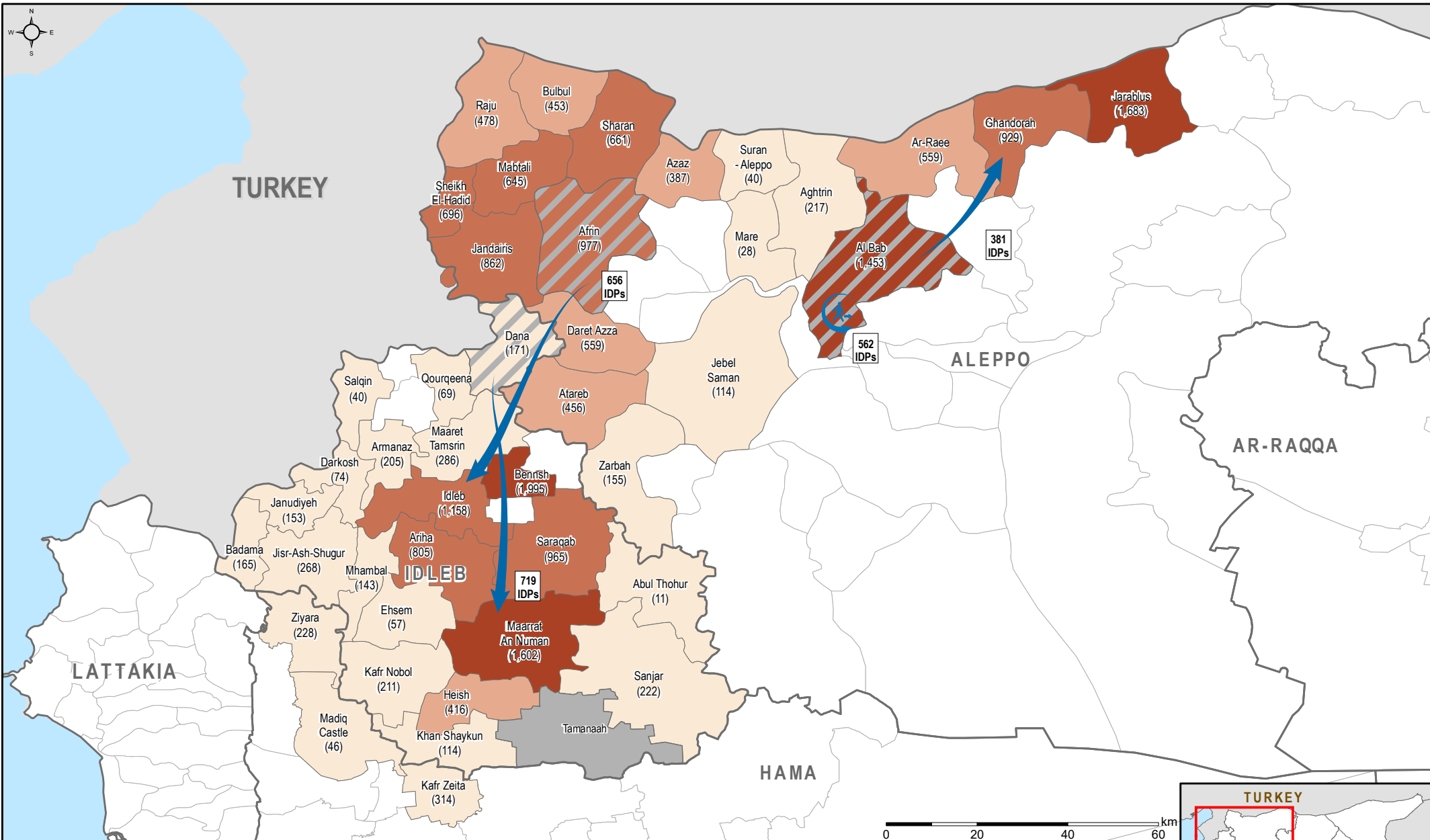


# SYRIA - IDP Situation Monitoring Initiative (ISMI) Monthly Update

Major Reported IDP Movements (1/10/18 - 31/10/18)

For Humanitarian Purposes Only  
Production date : 23 November 2018



**Percent of total arrivals by sub-district (IDPs) (1/10/18 - 31/10/18)**

- 0.1% - 1.5%
- 1.6% - 3.0%
- 3.1% - 6.0%
- 6.1% - 9.4%

**Most common sub-districts of departure (>770 IDP arrivals from sub-district)**

- Outward displacement
- Inward & outward displacement

**Administrative boundaries**

- Governorate
- Sub-district

**Major displacements (>380 IDPs)**

- External
- Internal

CCCM Cluster Turkey hub Source:  
CCCM cluster database, Turkey hub.  
Feedback: [cccmcluster.org](mailto:cccmcluster.org),  
Email: [syria.cross.border.info@cccmcluster.org](mailto:syria.cross.border.info@cccmcluster.org),  
info: <http://www.globalccmcluster.org>  
<https://www.humanitarianresponse.org>

Data sources: Administrative boundaries: OCHA COD  
IDP movement data: REACH, SRN  
Coordinate System: GCS WGS 1984  
Contact: [reach.mapping@impact-initiatives.org](mailto:reach.mapping@impact-initiatives.org)

Disclaimer: The boundaries and names shown and the designations used on this map do not imply official endorsement by the United Nations. The data for this map is reported by humanitarian actors and a limited number of other sources, who may be parties to conflict. The data has not been independently verified and is subject to error or omission, deliberation or otherwise by the various sources. This data is for humanitarian use only. Some figures reported may be repeated displacements.

