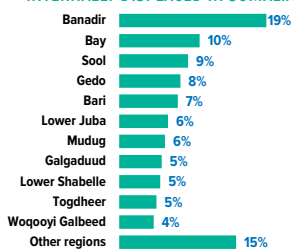


**3.47** MILLION  
TOTAL DISPLACED SOMALIS

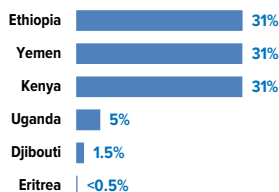
**821,939**  
REFUGEES AND ASYLUM-SEEKERS

**2.6**\* MILLION  
INTERNALLY DISPLACED IN SOMALIA

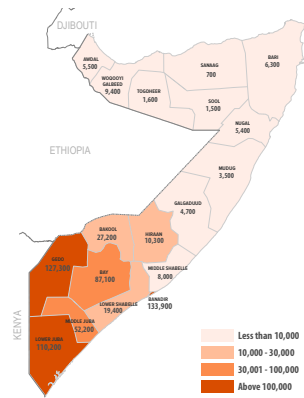
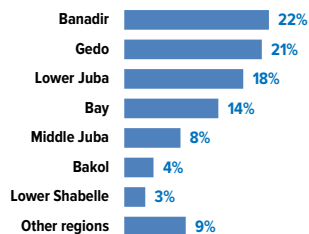


\* Estimated internally displaced persons as of 28 February 2018  
Source: Somalia Information Management Working Group

**HOST COUNTRIES OF SOMALI REFUGEES**



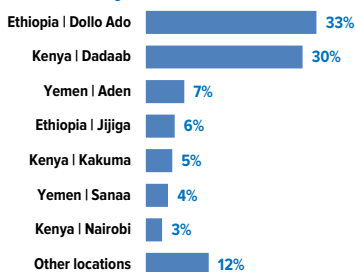
**REGIONS OF ORIGIN OF SOMALI REFUGEES AND ASYLUM-SEEKERS**



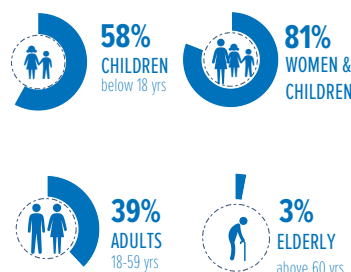
An estimated 203,000 Somalis whose areas of origin information is unknown/unspecified are not shown on the map. These include 176,000 Somalis in Yemen, and some 27,000 Somalis in Ethiopia, Kenya and Uganda. Areas of origin statistics as of 30 April 2018 or latest available.

**MAIN REFUGEE-HOSTING**

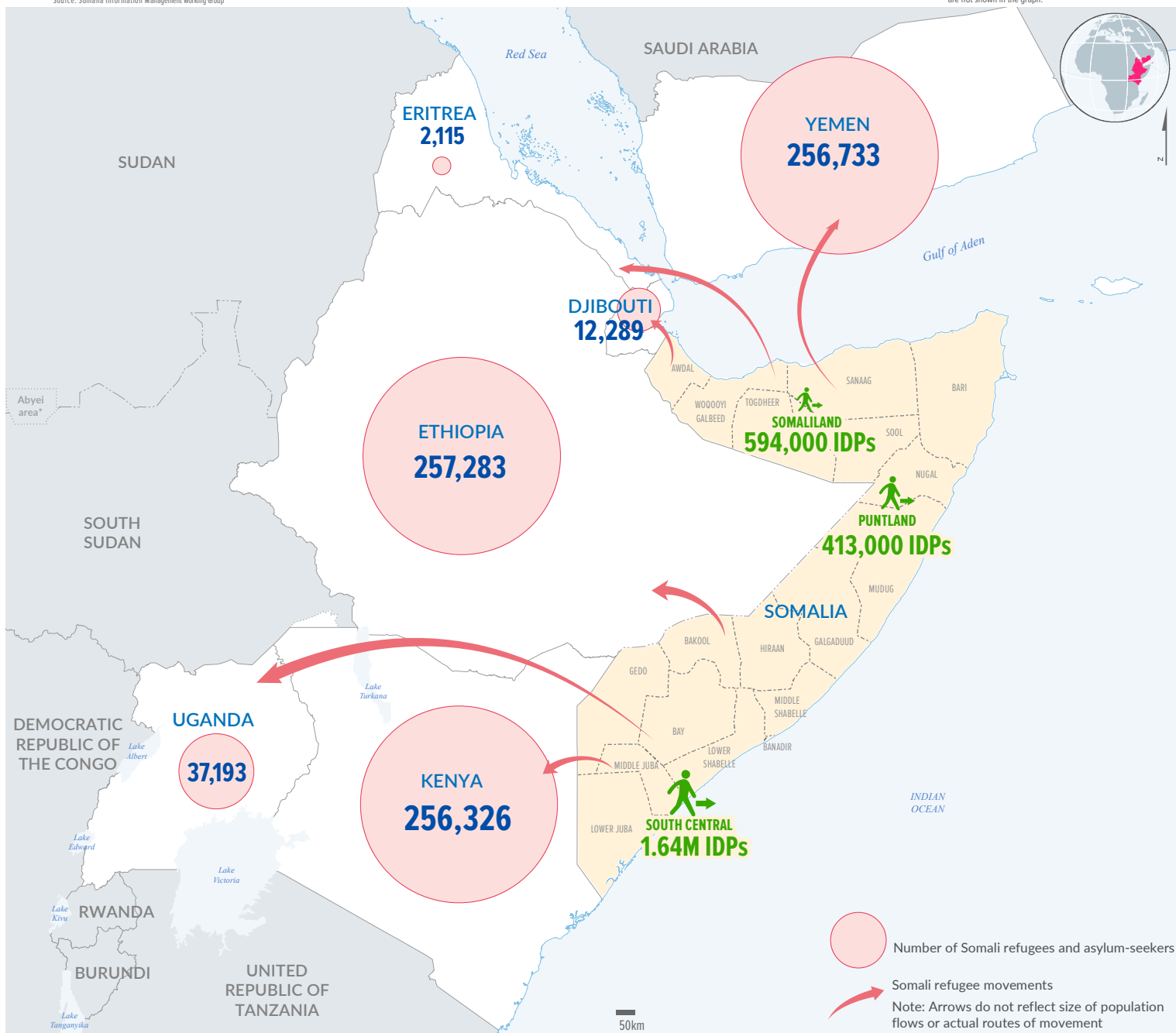
locations hosting > 20,000 Somalis



**AGE AND GENDER COMPOSITION**



Dollo Ado includes Buramino, BokoManyo, Hilaawayne, Kobe and Melkadida refugee camps. Dadaab includes Dagahaley, Hagadera, Ifo and Ifo 2 refugee camps. Jijiga includes Awbarre, Kebrilbiyyah and Sheeler refugee camps. South-Western Uganda includes Nakivale, Kyaka II, Kyangwali and Kiryandongo refugee camps. Some 174,000 Somalis in Yemen dispersed in unknown locations are not shown in the graph.



The boundaries and names shown and the designations used on this map do not imply official endorsement or acceptance by the United Nations. Final boundaries between the Republic of Sudan and the Republic of South Sudan and Somalia Figures shown are provisional and subject to change.