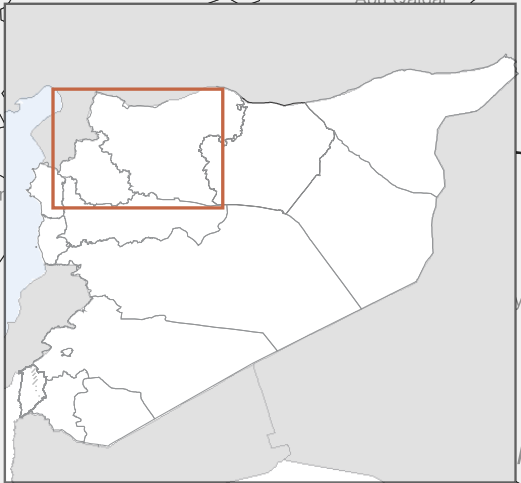
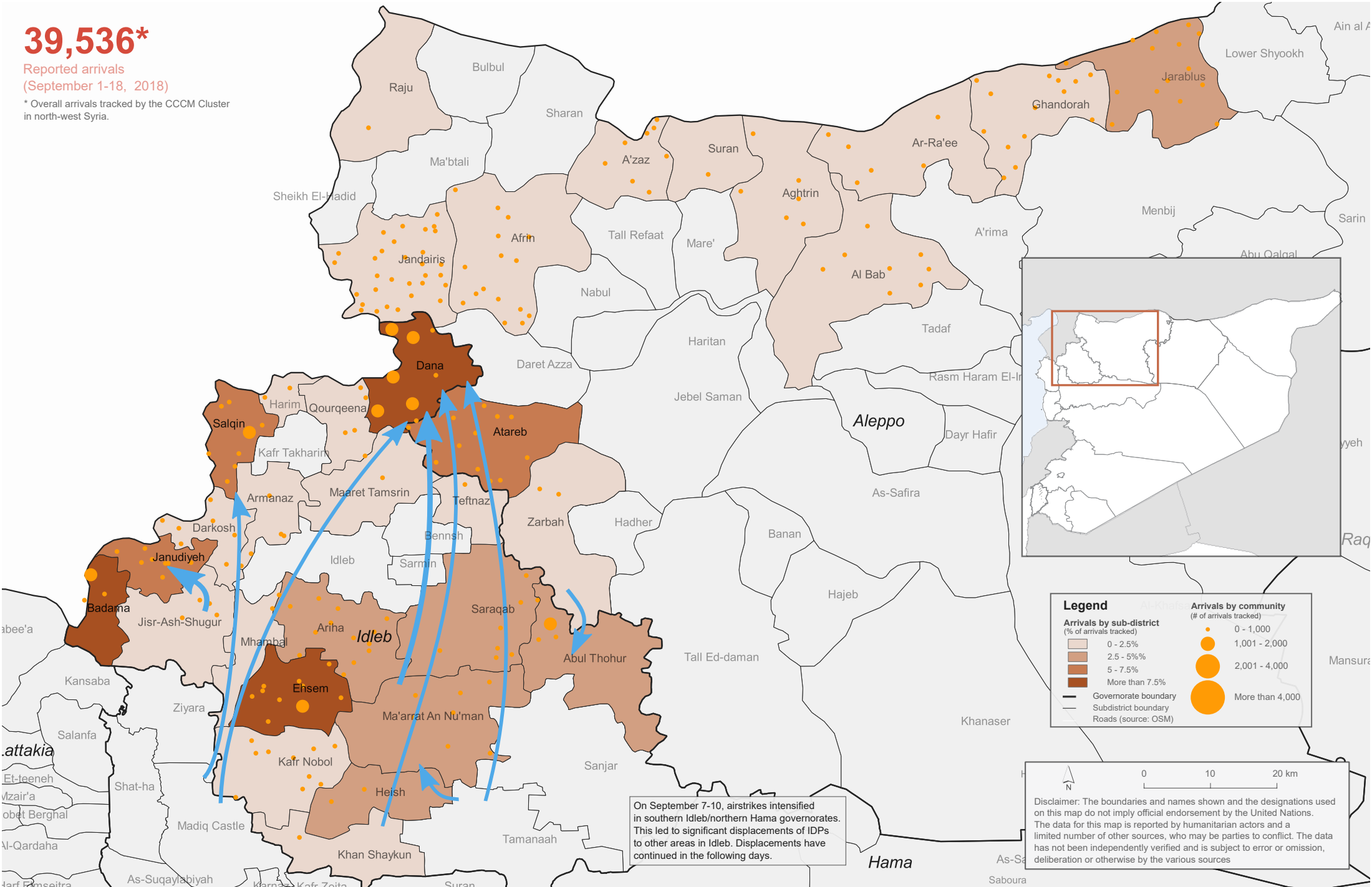


39,536*

Reported arrivals
(September 1-18, 2018)

* Overall arrivals tracked by the CCCM Cluster in north-west Syria.



Legend

Arrivals by sub-district
(% of arrivals tracked)

- 0 - 2.5%
- 2.5 - 5%
- 5 - 7.5%
- More than 7.5%

Arrivals by community
(# of arrivals tracked)

- 0 - 1,000
- 1,001 - 2,000
- 2,001 - 4,000
- More than 4,000

— Governorate boundary
 - - Subdistrict boundary
 — Roads (source: OSM)

On September 7-10, airstrikes intensified in southern Idlib/northern Hama governorates. This led to significant displacements of IDPs to other areas in Idlib. Displacements have continued in the following days.

0 10 20 km

Disclaimer: The boundaries and names shown and the designations used on this map do not imply official endorsement by the United Nations. The data for this map is reported by humanitarian actors and a limited number of other sources, who may be parties to conflict. The data has not been independently verified and is subject to error or omission, deliberation or otherwise by the various sources