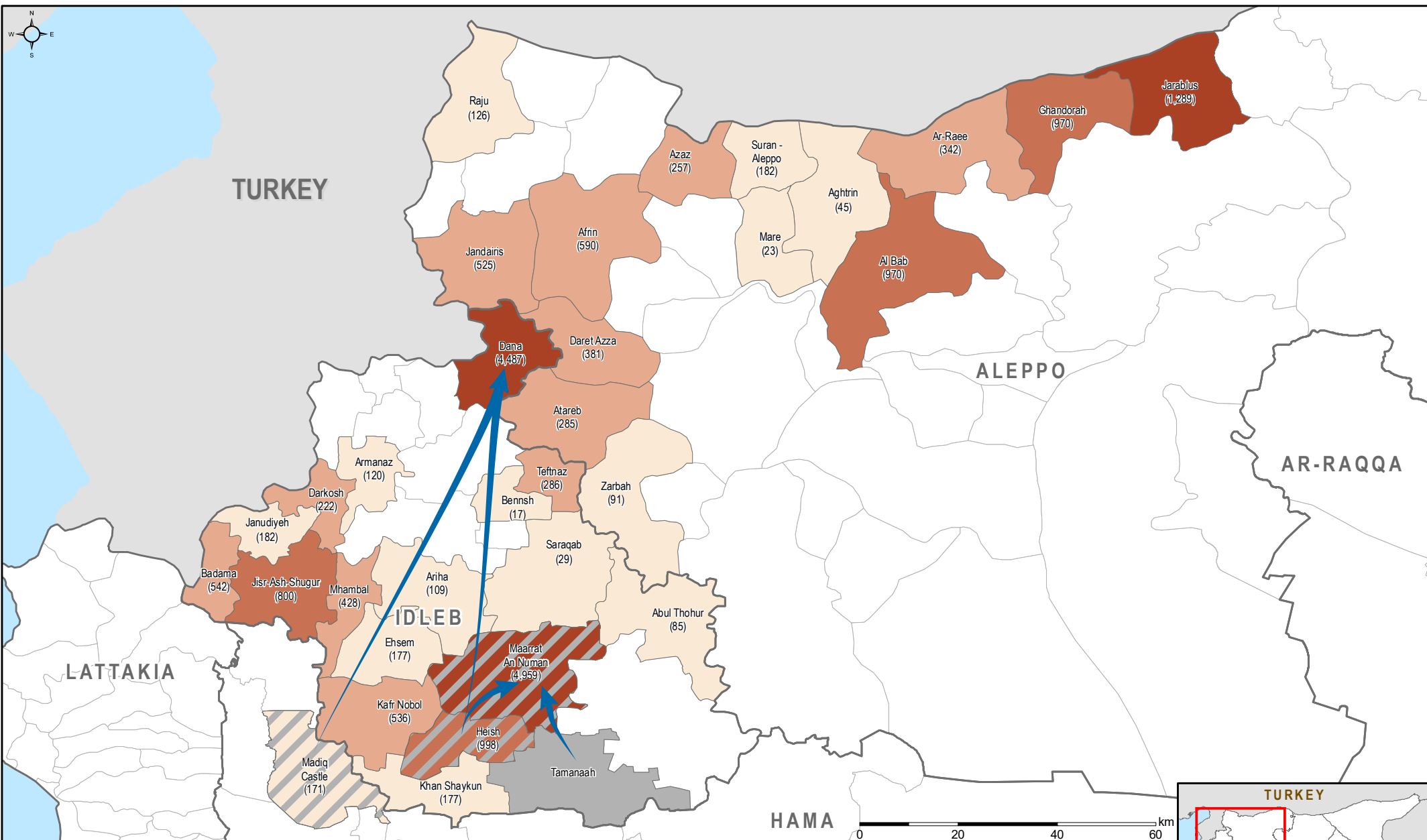


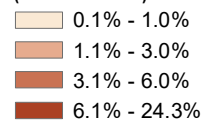
SYRIA - IDP Situation Monitoring Initiative (ISMI) Bi-Weekly Update

Major Reported IDP Movements (1/8/18 - 15/8/18)

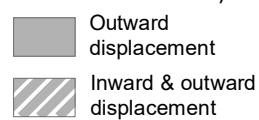
For Humanitarian Purposes Only
Production date : 4 September 2018



Percent of total arrivals
by sub-district (IDPs)
(1/8/18 - 15/8/18)



Most common sub-districts
of departure (>1,200 IDP
arrivals from sub-district)



Administrative
boundaries



Major displacements
(>950 IDPs)



CCCM Cluster Turkey hub Source:
CCCM cluster database, Turkey hub.
Feedback: CCCM Cluster Northern Syria.
Email: syria.cross.border.info@ccmcluster.org.
info: <http://www.globalccmcluster.org>
<https://www.humanitarianresponse.org>.

Data sources: Administrative boundaries: OCHA COD
IDP movement data: REACH, SRN
Coordinate System: GCS WGS 1984
Contact: reach.mapping@impact-initiatives.org

Disclaimer: The boundaries and names shown
and the designations used on this map do not
imply official endorsement by the United
Nations. The data for this map is reported by
humanitarian actors and a limited number of
other sources, who may be parties to conflict.
The data has not been independently verified
and is subject to error or omission, deliberation
or otherwise by the various sources. This data
is for humanitarian use only. Some figures
reported may be repeated displacements.

