

East, Horn of Africa and Yemen

Displacement of Somalis: Refugees, asylum-seekers and IDPs

showing host countries with more than 1,000 Somalis | as of 31 January 2018

2.96 MILLION

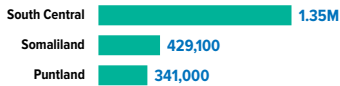
TOTAL DISPLACED SOMALIS

843,725

REFUGEES AND ASYLUM-SEEKERS

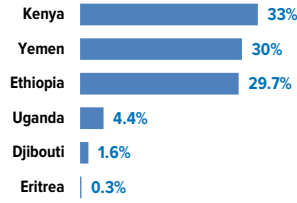
2.1* MILLION

INTERNALLY DISPLACED IN SOMALIA



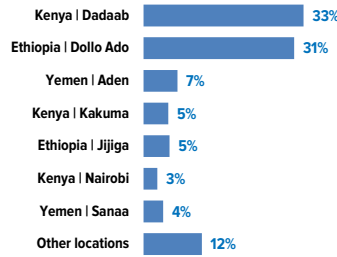
* Estimated internally displaced persons as of 31 October 2017 (2018 Humanitarian Response Plan). Figures rounded off to the nearest 100.

HOST COUNTRIES OF SOMALI REFUGEES

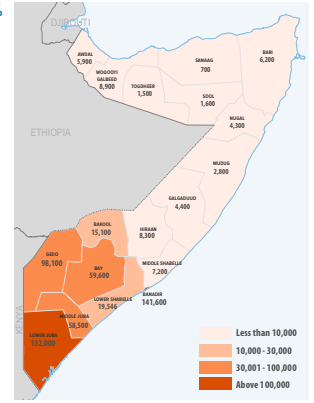
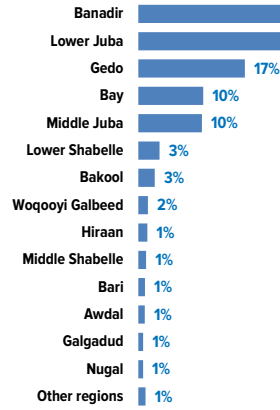


MAIN REFUGEE LOCATIONS BY HOST COUNTRY

hosting > 20,000 Somalis

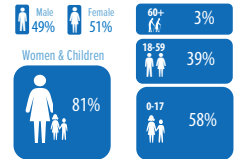


REGIONS OF ORIGIN OF SOMALI REFUGEES AND ASYLUM-SEEKERS

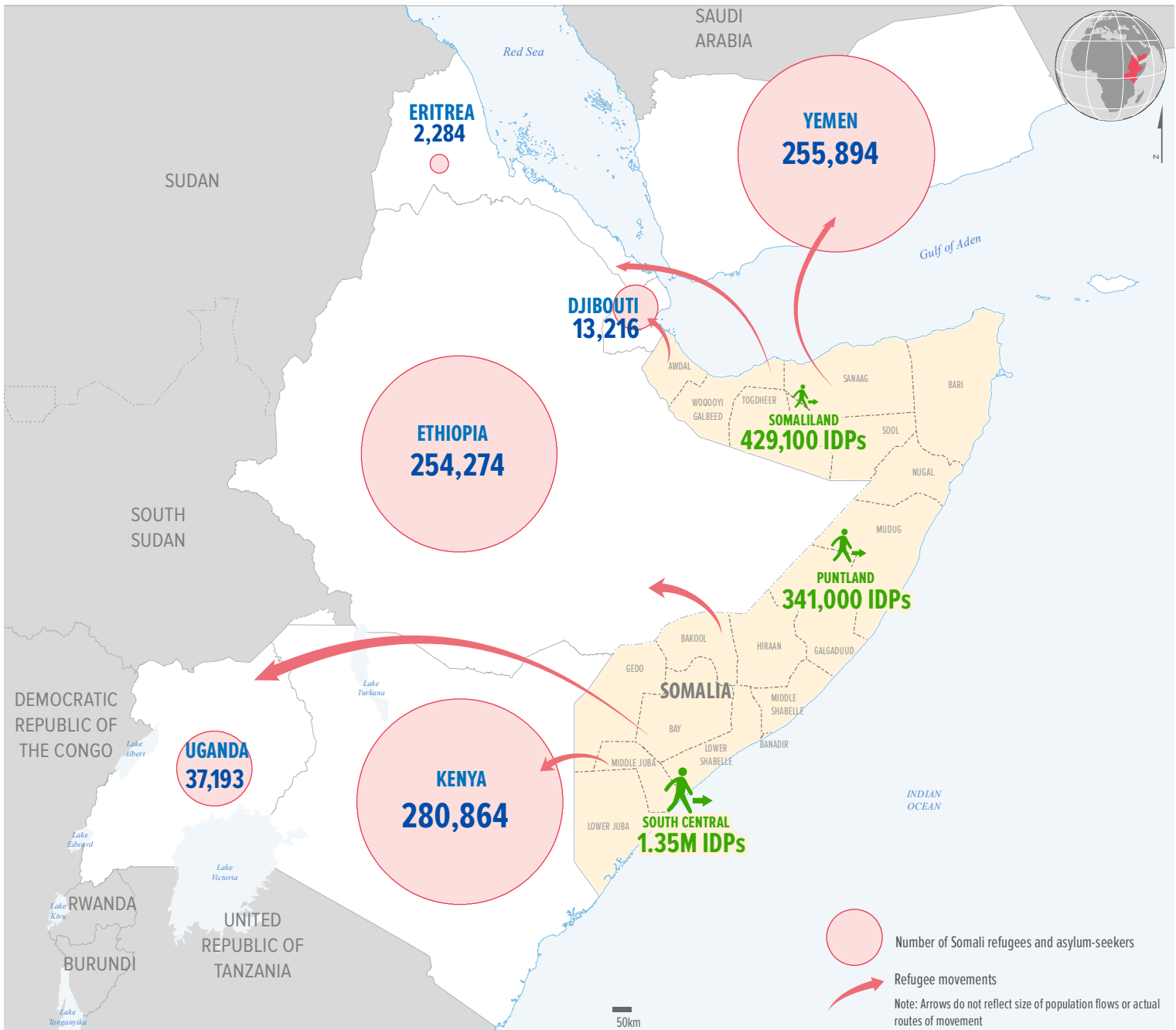


An estimated 171,000 Somalis whose areas of origin information is unknown/unspecified are not shown on the map. These include 149,000 Somalis in Yemen, and some 14,000 Somalis in Ethiopia, Kenya and Uganda. Areas of origin statistics as of 31 March 2017 or latest available.

AGE AND GENDER COMPOSITION



Dollo Ado includes Buramino, Bokolmanyoo, Hilaweyne, Kobe and Melkadida refugee camps. Dadaab includes Dagahaley, Hagadera, Ifo and Ifo 2 refugee camps. Jijiga includes Awbarre, Kebribayah and Sheder refugee camps. South-Western Uganda includes Nakivale, Kyaka II, Kyangwali and Kiryandongo refugee camps. Some 149,000 Somalis in Yemen dispersed in unknown locations are not shown in the graph.



The boundaries and names shown and the designations used on this map do not imply official endorsement or acceptance by the United Nations. Final boundaries between the Republic of Sudan and the Republic of South Sudan and Somalia Figures shown are provisional and subject to change.