

# Syrian Arab Republic (Northern Governorates): Displacements to northwest Syria as of February 3rd, 2018

## 325,443

Reported displacements  
(December 15, 2017 - February 3, 2018)

\* Overall displacements tracked by the CCCM Cluster in Idlib area. Of some may represent secondary displacement.

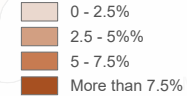
## Northwest Syria\*

(Total population: 3,445,913)

Total IDPs: 1,474,878

IDPs in sites: 374,925

**Displacements by sub-district**  
(% of arrivals tracked)



Total IDPs (HNO and ISMI datasets)

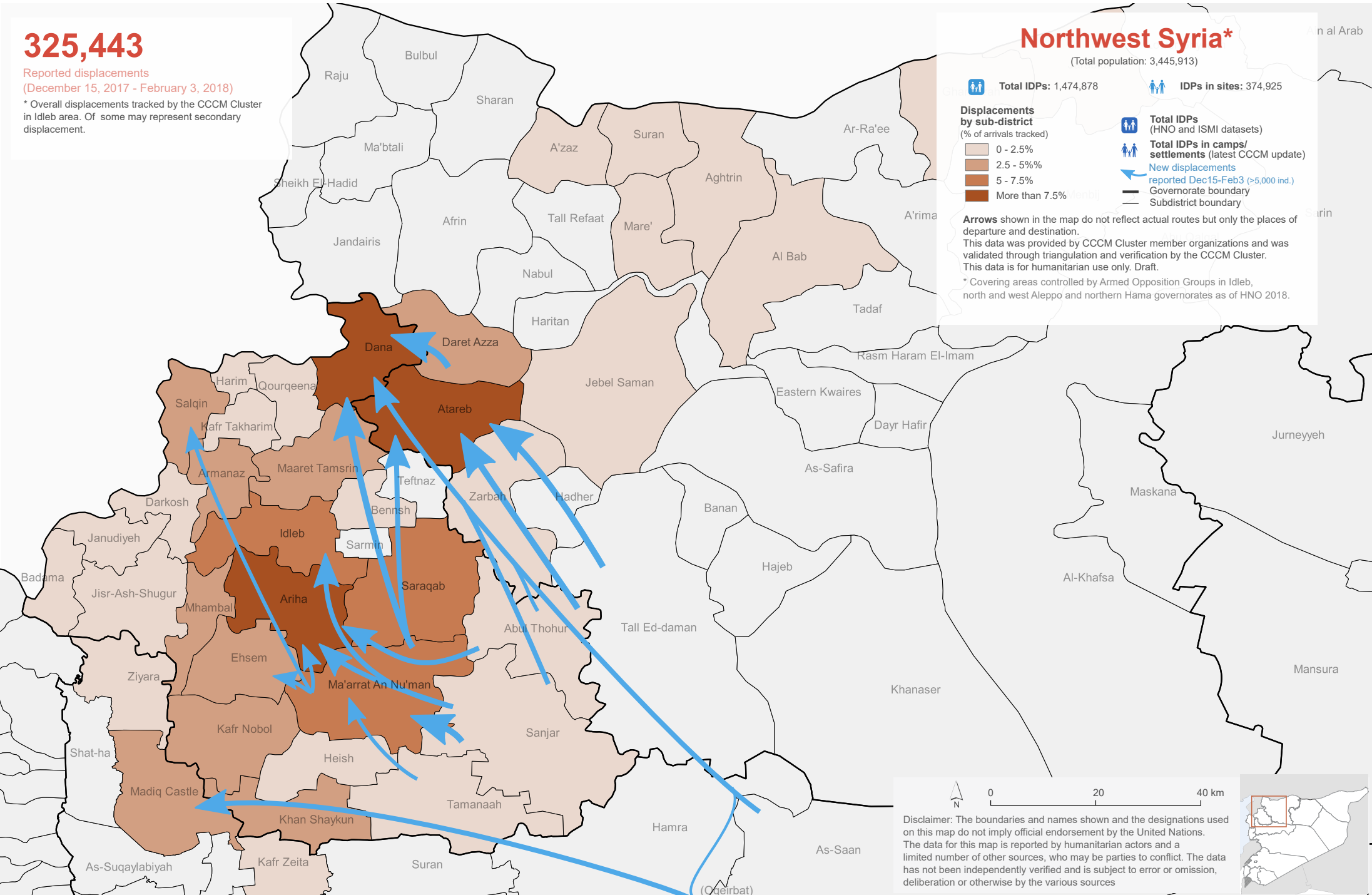
Total IDPs in camps/settlements (latest CCCM update)

New displacements reported Dec15-Feb3 (>5,000 ind.)

Governorate boundary  
 Subdistrict boundary

Arrows shown in the map do not reflect actual routes but only the places of departure and destination. This data was provided by CCCM Cluster member organizations and was validated through triangulation and verification by the CCCM Cluster. This data is for humanitarian use only. Draft.

\* Covering areas controlled by Armed Opposition Groups in Idlib, north and west Aleppo and northern Hama governorates as of HNO 2018.



Disclaimer: The boundaries and names shown and the designations used on this map do not imply official endorsement by the United Nations. The data for this map is reported by humanitarian actors and a limited number of other sources, who may be parties to conflict. The data has not been independently verified and is subject to error or omission, deliberation or otherwise by the various sources

