

KEY FIGURES¹

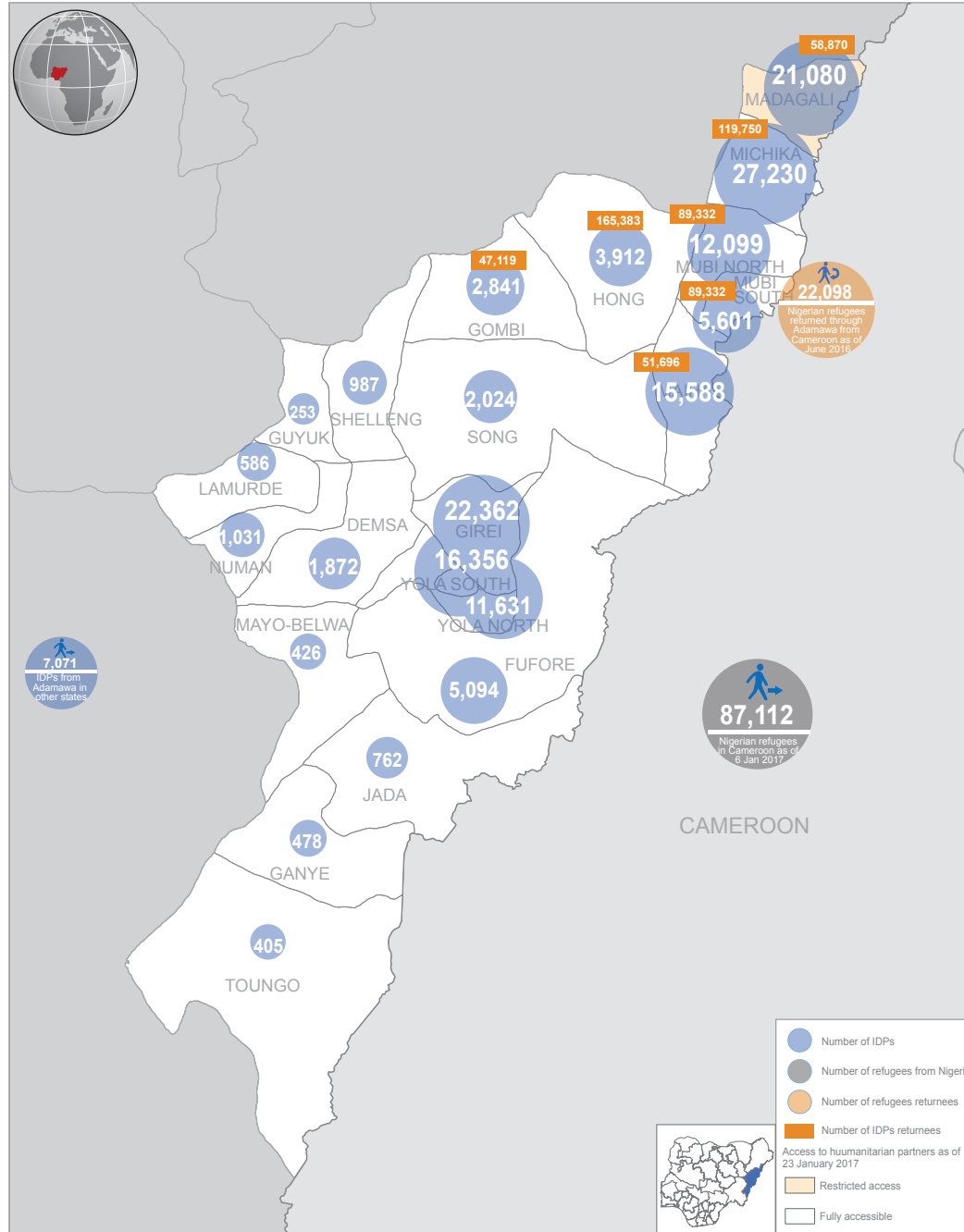
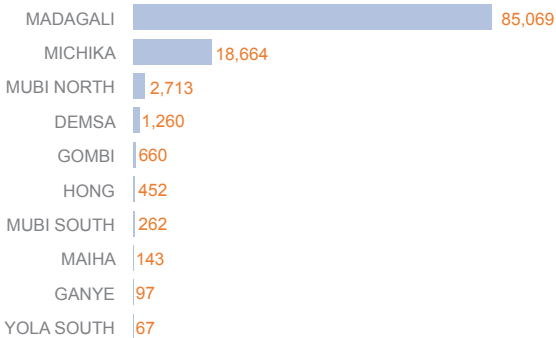
153,000
number of internally displaced people living in Adamawa
10.3 per cent decrease compared to DTM RXII

630,000
number of internally displaced people returning to their areas of origin
8.6 per cent increase compared to DTM RXII

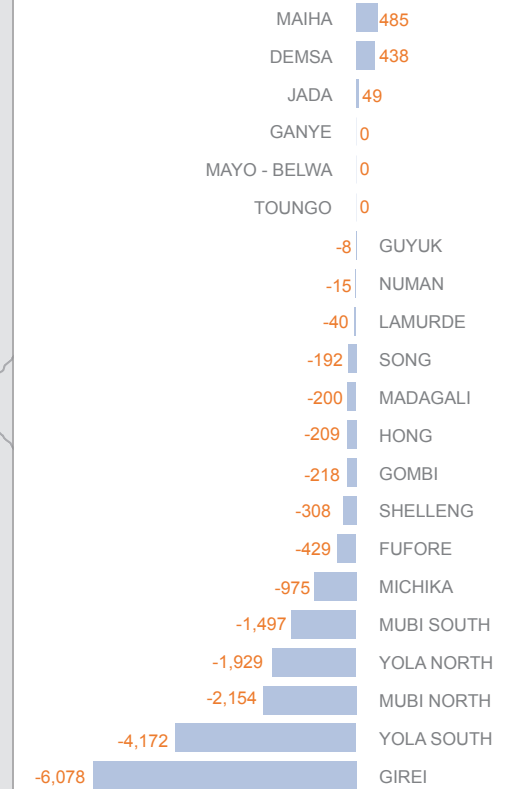
22,000
former refugees returning to their areas of origin

IDPs LOCAL GOVERNMENT AREAS OF ORIGIN²

Majority of the IDPs from Adamawa state originate from Madagali and Michika LGA:



INCREASE/DECREASE OF IDPS COMPARED TO DTM RXII³



The decrease in the number of IDPs in 15 out of 21 of the LGAs is attributed to the increasing trend of IDPs returning to their LGAs of origin which increased by 8.6 per cent compared to the last round of dtm published in October 2016.

CURRENT LOCATION OF IDPS FROM ADAMAWA⁴



The boundaries and names shown and the designations used on this map do not imply official endorsement or acceptance by the United Nations. Developed only for humanitarian activities purposes.

Update on: 31 January 2017 Sources: (1) DTM Round XII & XIII, UNHCR, (2) DTM RXIII (3) DTM RXII & RXIII, (4) OCHA Access Monitoring Framework

Feedback: ochanigeria@un.org For more information on Nigeria humanitarian activities: www.humanitarianresponse.info/operations/nigeria http://www.unocha.org/nigeria http://reliefweb.int/country/nga