

Burundi Situation

Displacement of Burundians into neighbouring countries since April 2015

as of 30 April 2017

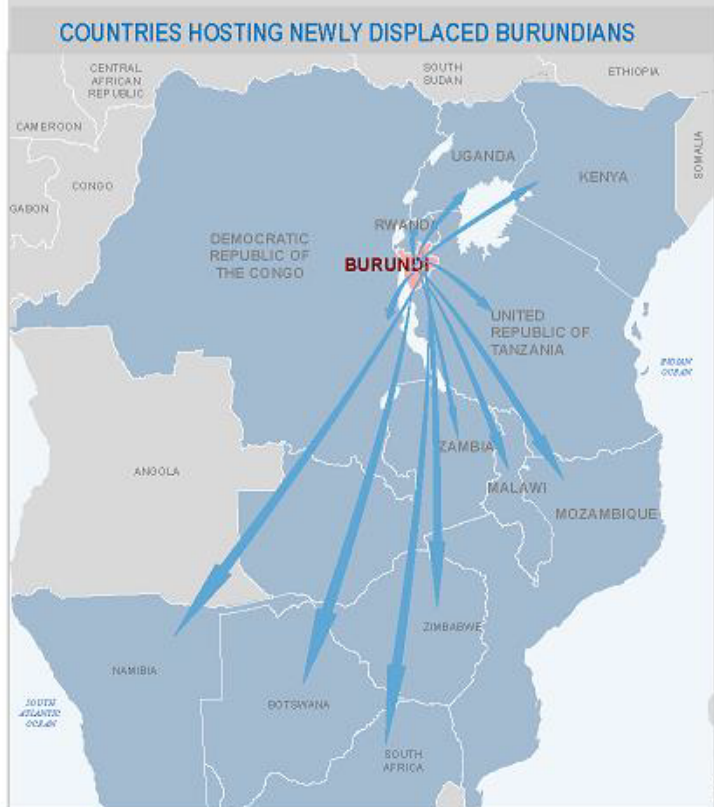
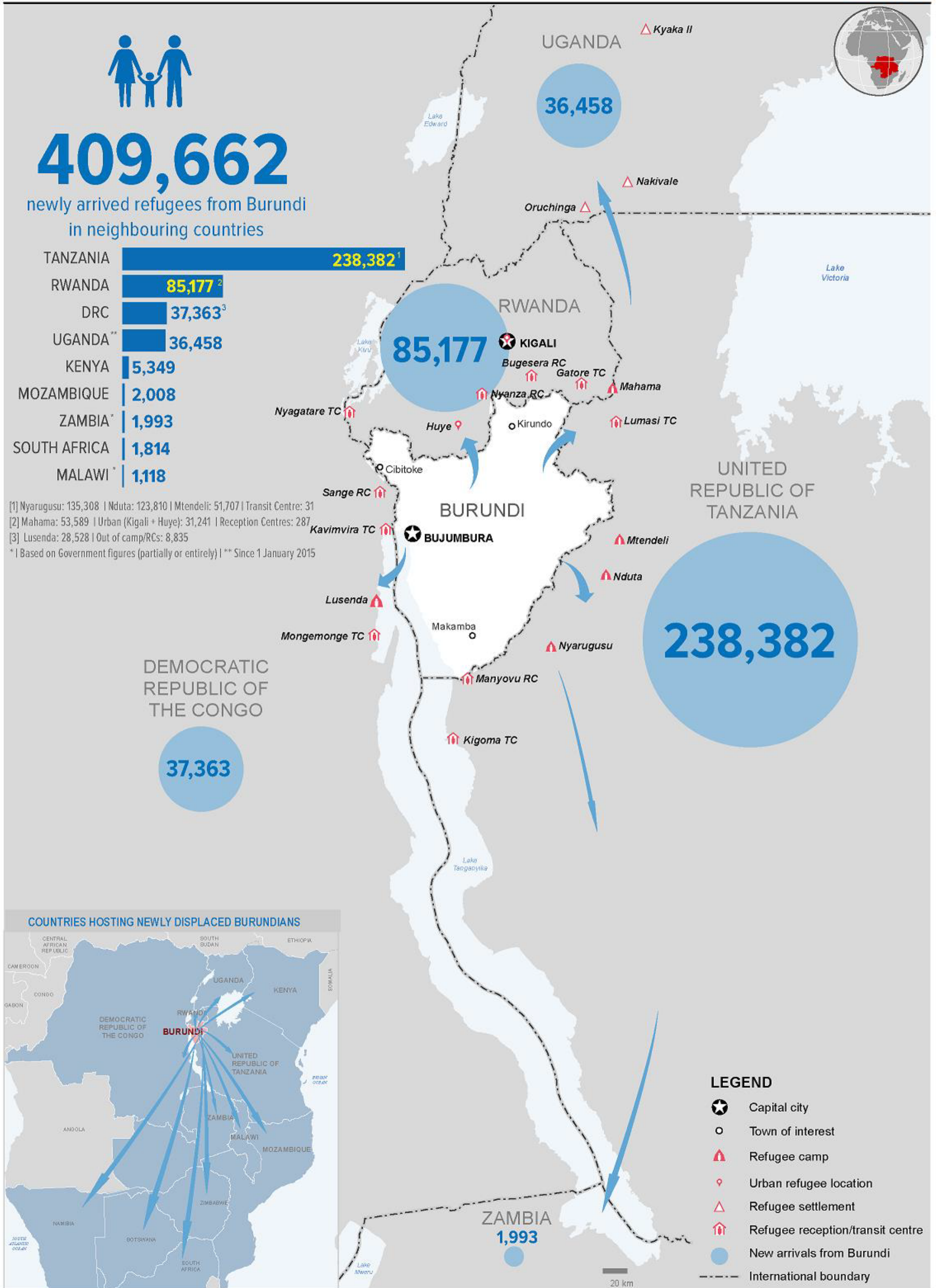


409,662

newly arrived refugees from Burundi
in neighbouring countries

TANZANIA	238,382 ¹
RWANDA	85,177 ²
DRC	37,363 ³
UGANDA**	36,458
KENYA	5,349
MOZAMBIQUE	2,008
ZAMBIA*	1,993
SOUTH AFRICA	1,814
MALAWI*	1,118

[1] Nyarugusu: 135,308 | Nduta: 123,810 | Mtendeli: 51,707 | Transit Centre: 31
 [2] Mahama: 53,589 | Urban (Kigali + Huye): 31,241 | Reception Centres: 287
 [3] Lusenda: 28,528 | Out of camp/RCS: 8,835
 * | Based on Government figures (partially or entirely) | ** Since 1 January 2015



LEGEND

- Capital city
- Town of interest
- Refugee camp
- Urban refugee location
- Refugee settlement
- Refugee reception/transit centre
- New arrivals from Burundi
- International boundary

The boundaries and names shown and the designations used on this map do not imply official endorsement or acceptance by the United Nations.