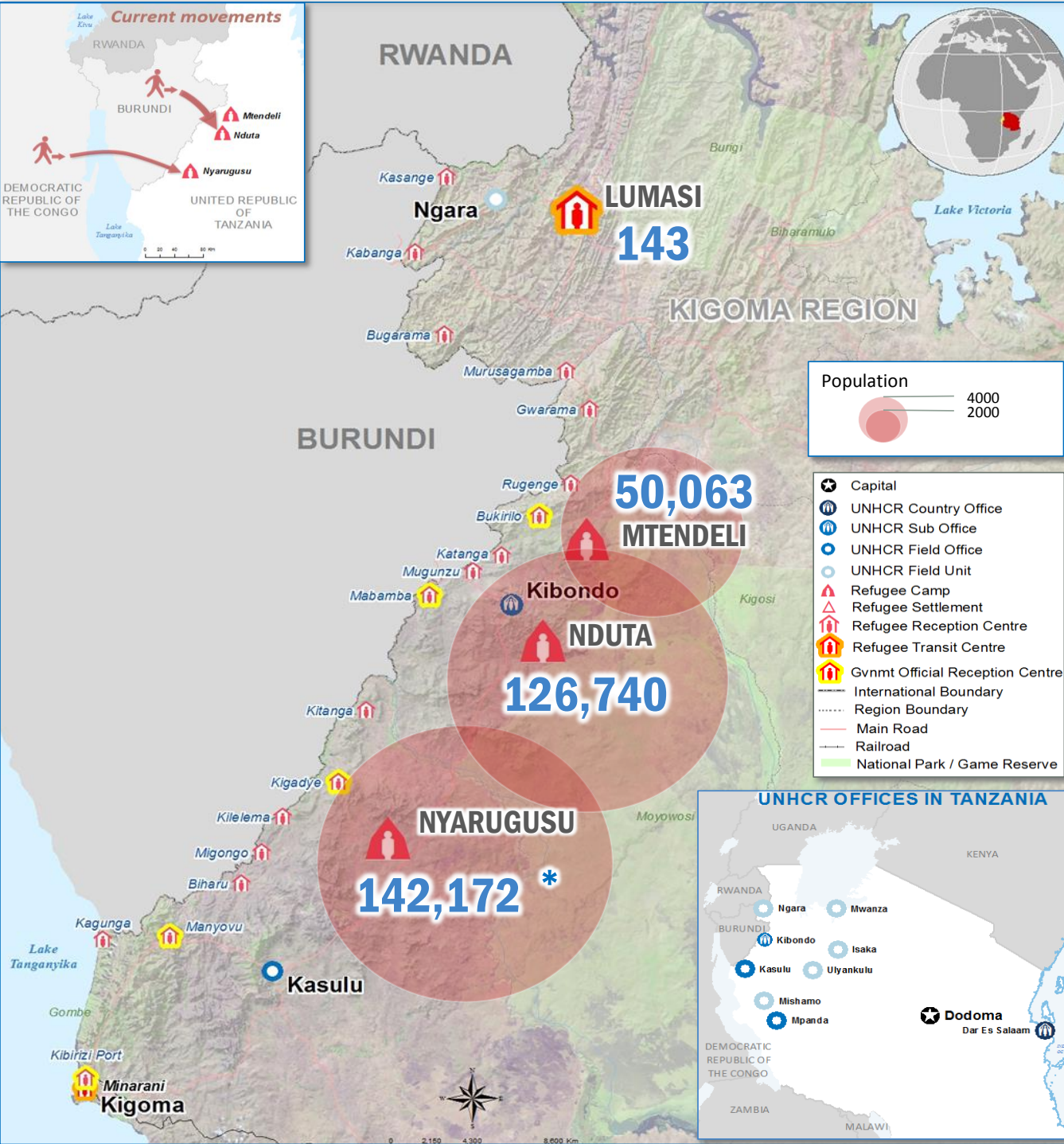
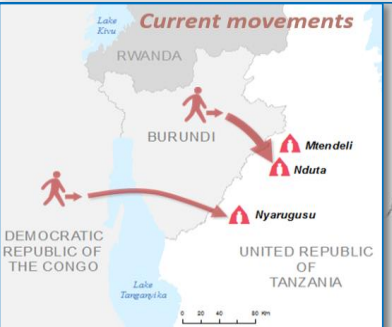
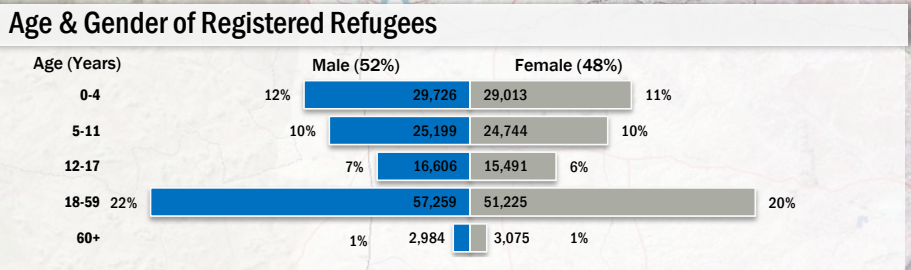
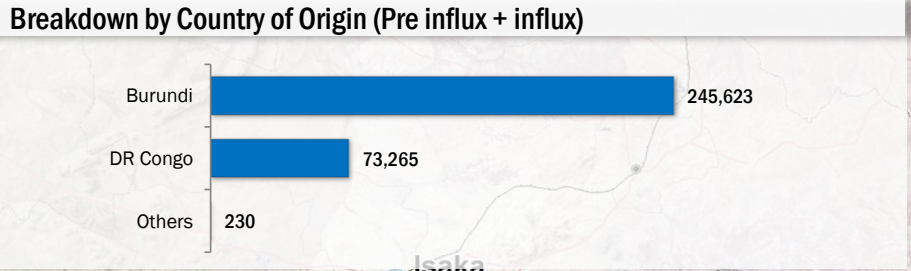
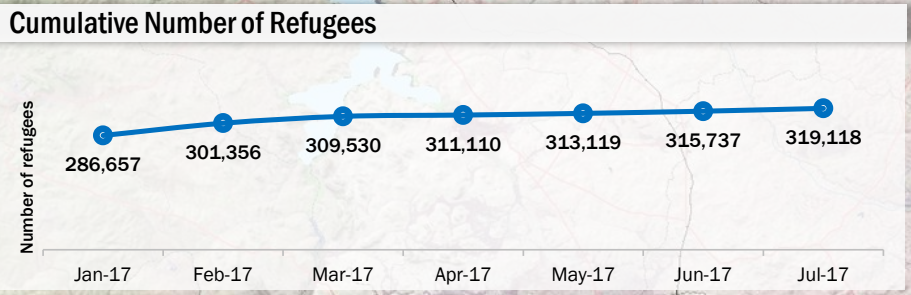


# North-West Tanzania - REFUGEE CAMPS POPULATION UPDATE

as of 31 July 2017



<b>Total Number of Persons of Concern</b>	<b>319,118</b>
<b>Total Number of Biometrically Registered Refugees</b>	<b>255,322</b>
<b>Total Number of Registered Households</b>	<b>90,081</b>
<b>Total Number of Asylum Seekers</b>	<b>39,815</b>
<b>POC Awaiting Biometric Registration</b>	<b>817</b>



**Background information**

The current Burundi refugee situation in Tanzania began late April 2015. The months that followed saw a high number of persons of concern arriving in Tanzania. Prior to allocating new camp site by the Government of Tanzania, the population was temporarily hosted in Nyarugusu camp, which was already host to 65,000 other persons of concern, mainly DR Congolese. The camp quickly ran out of capacity to host the new population, prompting the opening of a new camp, Nduta, in Kibondo district on 05-Oct-2015. Nduta's capacity was put at 60,000. Another camp, Mtendeli in Kakonko district, was also opened and began officially receiving refugees from Burundi on 14-Jan-2016. By September 2016, Mtendeli reached its full capacity of 50,000. The next month Nduta camp was re-opened to receive newly arriving refugees from Burundi; while all other nationals entering Tanzania to seek asylum are hosted in Nyarugusu camp.

The boundaries and names shown and the designations used on this map do not imply official endorsement or acceptance by the United Nations. Sources: Boundaries: UNCS; Background: USGS; Data: UNHCR, IOM

\* 62,979 persons of concern pre-Burundi crisis, 79,193 New Arrivals from mainly Burundi and DR Congo

For more information or suggestions please contact: tankbim@unhcr.org or visit: <https://data2.unhcr.org/en/situations/burundi/location/2034> Creation Date : 02 August, 2017

This document is prepared by UNHCR The UN Refugee Agency