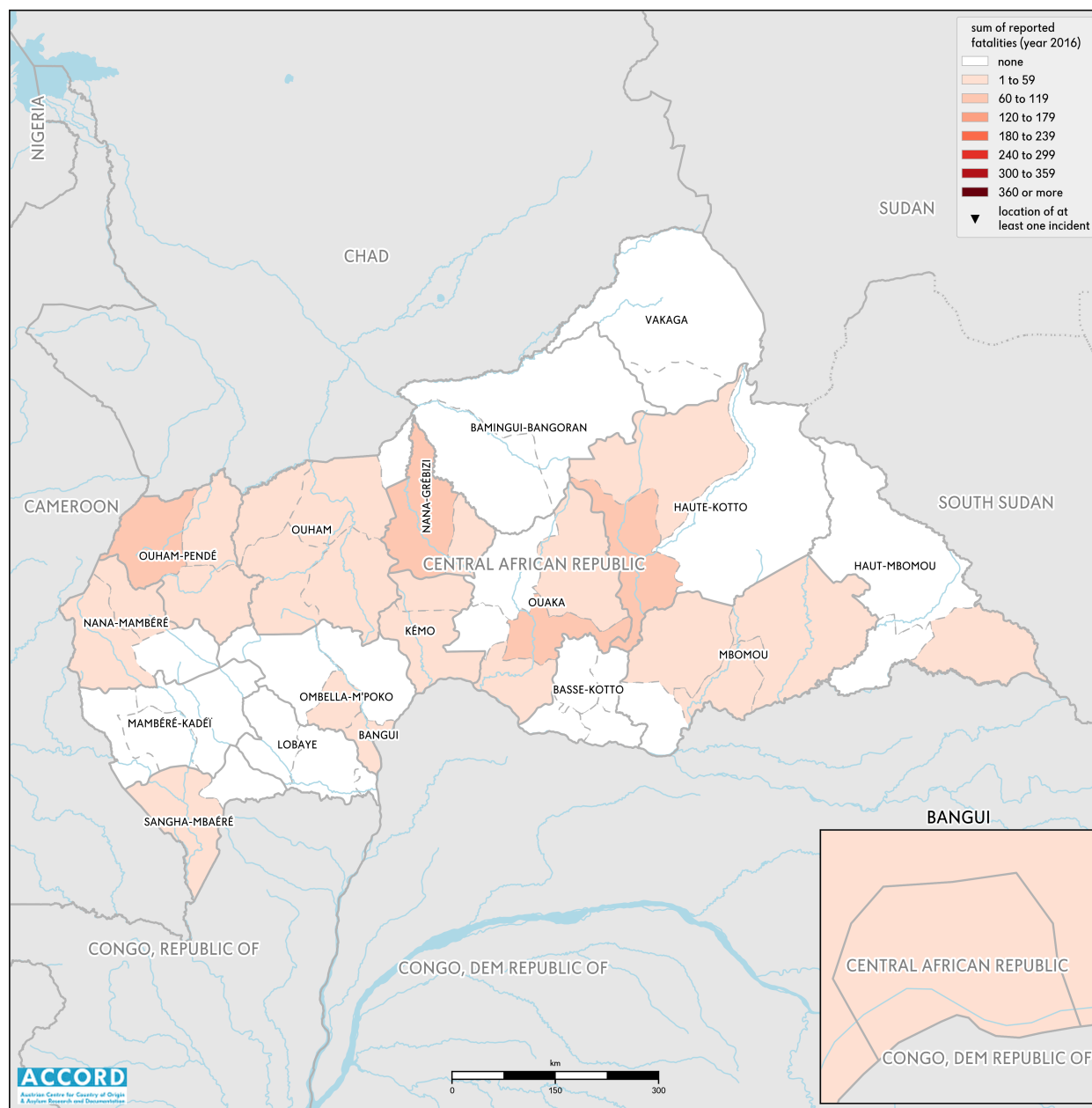


# CENTRAL AFRICAN REPUBLIC, YEAR 2016:

Update on incidents according to the Armed Conflict Location & Event Data Project (ACLED)

compiled by ACCORD, 9 February 2017



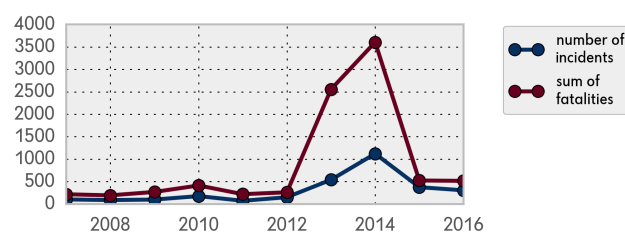
National borders: [GADM, November 2015b](#); administrative divisions: [GADM, November 2015a](#); Abyei Area: [SSNBS, 1 December 2008](#); South Sudan/Sudan border status: [UN Cartographic Section, October 2011](#); incident data: [ACLED, January 2017](#); coastlines and inland waters: [Smith and Wessel, 1 May 2015](#)

## Conflict incidents by category

category	number of incidents	sum of fatalities
violence against civilians	128	255
battle	81	250
riots/protests	57	10
strategic developments	34	0
non-violent activities	4	0
total	304	515

This table is based on data from the Armed Conflict Location & Event Data Project (datasets used: [ACLED, January 2017](#)).

## Development of conflict incidents from 2007 to 2016



This graph is based on data from the Armed Conflict Location & Event Data Project (datasets used: [ACLED, January 2017](#)).

## LOCALIZATION OF CONFLICT INCIDENTS

**Note:** The following list is an overview of the incident data included in the ACLED dataset. More details are available in the actual dataset (date, location data, event type, involved actors, information sources, etc.). In the following list, the names of event locations are taken from ACLED, while the administrative region names are taken from GADM data which serves as the basis for the map above.

In **Bamingui-Bangoran**, 2 incidents killing 0 people were reported. The following location was affected: **Ndele**.

In **Bangui**, 49 incidents killing 41 people were reported. The following locations were affected: **Bangui, Kpata, PK5**.

In **Haut-Mbomou**, 15 incidents killing 2 people were reported. The following locations were affected: **Bambouti, Kadjema, Obo, Tabane, Tamboura, Tambourah, Zemio**.

In **Haute-Kotto**, 22 incidents killing 90 people were reported. The following locations were affected: **Bria, Kalaga, Mbangana 1, Ouadda**.

In **Kémo**, 12 incidents killing 6 people were reported. The following locations were affected: **Bogangolo, Dekoa, Sibut**.

In **Mambéré-Kadéï**, 2 incidents killing 0 people were reported. The following location was affected: **Berberati**.

In **Mbomou**, 19 incidents killing 7 people were reported. The following locations were affected: **Agoumar, Bakouma, Bangassou, Derbissaka, Niakari, Nzako, Ouango**.

In **Nana-Grébizi**, 27 incidents killing 79 people were reported. The following locations were affected: **Gondava, Kaga-Bandoro, Mbres**.

In **Nana-Mambéré**, 10 incidents killing 11 people were reported. The following locations were affected: **Baboua, Bondiba, Bouar, Groupement Yelewa, Ngaoui, Zoukombo**.

In **Ombella-M'Poko**, 19 incidents killing 16 people were reported. The following locations were affected: **Bakala, Bangui 3e, Bangui 5e, Bangui 6e, Bangui 8e, Bimbo, Fatima, KM5, Ombella-Bord, Yaloke**.

In **Ouaka**, 34 incidents killing 94 people were reported. The following locations were affected: **Bakala, Bambari, Kouango, Madonguere, Ngakobo**.

In **Ouham**, 36 incidents killing 65 people were reported. The following locations were affected: **Batangafo, Boganda, Boguila, Bossangoa, Garo, Kabo, Kouï, Kouki, Nana-Bakassa, Ngaragba**.

In **Ouham-Pendé**, 56 incidents killing 103 people were reported. The following locations were affected: **Bang, Bocaranga, Bozoum, Degaulle, Gouze, Kouï, Ngaounday, Ngaoundaye, Paoua**.

In **Sangha-Mbaéré**, 1 incident killing 1 person was reported. The following location was affected: **Bayanga**.

## METHODOLOGY

The data used in this report was collected by the Armed Conflict Location & Event Data Project (ACLED). ACLED collects data on reported conflict events in selected African and Asian countries, Central African Republic being among them. ACLED researchers collect event data from a variety of sources and code them by date, location, agent, and event type. For further details on ACLED and for the full data, see [www.acleddata.com](http://www.acleddata.com) und [Raleigh; Linke; Hegre, and Karlsen, 2010](#).

Based on these data, the Austrian Centre for Country of Origin & Asylum Research and Documentation (ACCORD) compiles updates on conflict incidents.

Incidents comprise the following categories: battle, headquarters or base established, non-violent strategic activities, riots/protests, violence against civilians, non-violent transfer of territory, remote violence. For details on these categories, please see

- ACLED – Armed Conflict Location & Event Data Project: Armed Conflict Location and Event Data Project (ACLED) Codebook, 2017  
[http://www.acleddata.com/wp-content/uploads/2017/01/ACLED\\_Codebook\\_2017.pdf](http://www.acleddata.com/wp-content/uploads/2017/01/ACLED_Codebook_2017.pdf)
- ACLED – Armed Conflict Location & Event Data Project: User Guide, January 2017  
[http://www.acleddata.com/wp-content/uploads/2017/01/ACLED\\_User-Guide\\_2017.pdf](http://www.acleddata.com/wp-content/uploads/2017/01/ACLED_User-Guide_2017.pdf)

## SOURCES

- ACLED – Armed Conflict Location & Event Data Project: ACLED Version 7 (1997 – 2016) standard file, January 2017  
[http://www.acleddata.com/wp-content/uploads/2017/01/ACLED-Version-7-All-Africa-1997-2016\\_dyadic-file.xlsx](http://www.acleddata.com/wp-content/uploads/2017/01/ACLED-Version-7-All-Africa-1997-2016_dyadic-file.xlsx)
- GADM – Global Administrative Areas: CAF\_adm.zip, Version 2.8, November 2015a  
[http://biogeo.ucdavis.edu/data/gadm2.8/shp/CAF\\_adm.zip](http://biogeo.ucdavis.edu/data/gadm2.8/shp/CAF_adm.zip)
- GADM – Global Administrative Areas: gadm28\_levels.shp, Version 2.8, November 2015b  
[http://biogeo.ucdavis.edu/data/gadm2.8/gadm28\\_levels.shp.zip](http://biogeo.ucdavis.edu/data/gadm2.8/gadm28_levels.shp.zip)
- Raleigh, Clionadh; Linke, Andrew; Hegre, Håvard, and Karlsen, Joakim: "Introducing ACLED-Armed Conflict Location and Event Data", in: Journal of Peace Research (47(5) 2010 ), pp. 651–660  
<http://jpr.sagepub.com/content/47/5/651.full.pdf+html>
- Smith, Walter H. F. and Wessel, Paul: Global Self-consistent Hierarchical High-resolution Geography (GSHHG), Version 2.3.4, 1 May 2015  
<https://www.ngdc.noaa.gov/mgg/shorelines/data/gshhg/latest/>

- SSNBS – South Sudan National Bureau of Statistics: Counties including disputed Abyei region, 1 December 2008  
[https://www.humanitarianresponse.info/sites/www.humanitarianresponse.info/files/datasets/SS\\_admbnda\\_adm2\\_200k\\_ssnbs\\_2013\\_0.zip](https://www.humanitarianresponse.info/sites/www.humanitarianresponse.info/files/datasets/SS_admbnda_adm2_200k_ssnbs_2013_0.zip)
- UN Cartographic Section: South Sudan, October 2011  
[http://www.ecoi.net/file\\_upload/4232\\_1407158014\\_southsudan.pdf](http://www.ecoi.net/file_upload/4232_1407158014_southsudan.pdf)

## DISCLAIMER

Most of the data collected by ACLED is gathered based on publicly available, secondary reports. It may therefore underestimate the volume of events. Fatality data particularly is vulnerable to bias and inaccurate reporting, and ACLED uses the most conservative estimate available. Furthermore, event data may be revised or complemented in future updates. The lack of information on an event in this report does not permit the inference that it did not take place. The boundaries and names displayed do not imply endorsement or acceptance by the Austrian Red Cross.

### Cite as

- ACCORD – Austrian Centre for Country of Origin & Asylum Research and Documentation: Central African Republic, year 2016: Update on incidents according to the Armed Conflict Location & Event Data Project (ACLED), 8 February 2017