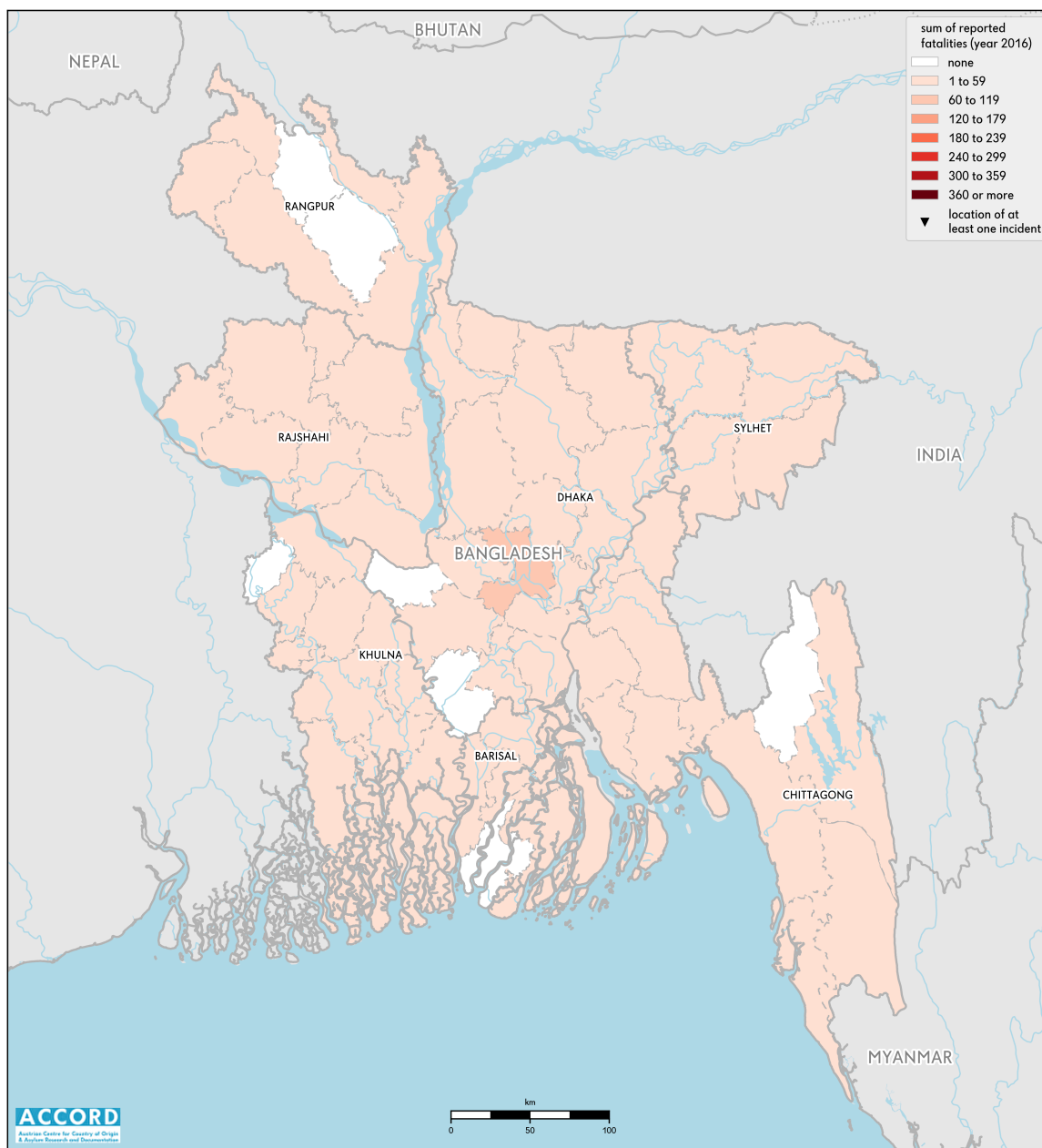


BANGLADESH, YEAR 2016:

Update on incidents according to the Armed Conflict Location & Event Data Project (ACLED)

compiled by ACCORD, 9 February 2017



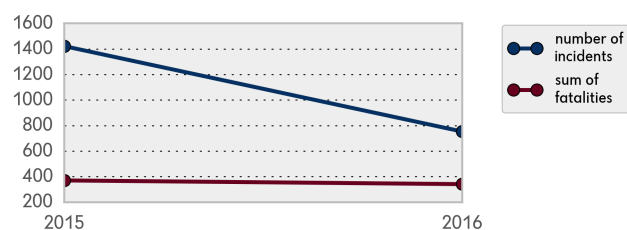
National borders: [GADM, November 2015b](#); administrative divisions: [GADM, November 2015a](#); China/India border status: [CIA, 2006](#); geodata of disputed borders: [GADM, November 2015b](#); [Natural Earth, undated](#); incident data: [ACLED, February 2017](#); coastlines and inland waters: [Smith and Wessel, 1 May 2015](#)

Conflict incidents by category

category	number of incidents	sum of fatalities
riots/protests	458	47
battle	145	187
violence against civilians	129	105
strategic developments	13	0
remote violence	8	2
total	753	341

This table is based on data from the Armed Conflict Location & Event Data Project (datasets used: [ACLED, February 2017](#)).

Development of conflict incidents from 2015 to 2016



This graph is based on data from the Armed Conflict Location & Event Data Project (datasets used: [ACLED, April 2016](#), and [ACLED, February 2017](#)).

LOCALIZATION OF CONFLICT INCIDENTS

Note: The following list is an overview of the incident data included in the ACLED dataset. More details are available in the actual dataset (date, location data, event type, involved actors, information sources, etc.). In the following list, the names of event locations are taken from ACLED, while the administrative region names are taken from GADM data which serves as the basis for the map above.

In **Barisal**, 33 incidents killing 16 people were reported. The following locations were affected: Babuganj, Barisal, Bauphal, Bhola, Bola, Borhanuddin, Char Kali, Guthia, Janata Bazar, Jhalakati, Jhalokati, Kalpara, Kasba, Manpura, Mathbaria, Mirzaganj, Patuakhali, Pirojpur, Raghunathpur, Sarankhola, Ulania Bazar.

In **Chittagong**, 146 incidents killing 73 people were reported. The following locations were affected: Adbarpur, Araishidha, Aruail, Ashuganj, Baghaichhari, Bairag, Bandarban, Banshbaria, Banshkhali, Bara Uthan, Barura, Basurhat, Begumganj, Bogadia, Boro Maheshkhali, Brahmanbaria, Brahmanpara, Chandpur, Charkadira, Chauddagam, Chhagolnaiya, Chittagong, Comilla, Cox's Bazar, Dagonbhuiyan, Fatepur, Fatikchhari, Feni, Gazipur, Gouripur, Hathazari, Hatiya, Kachua, Kamalnagar, Kamolpur, Kanchana, Khagrachhari, Kotbari, Lakshampur, Matiranga, Meghna, Monohorgonj, Nabinagar, Naikhongchari, Nangalkot, Nasirnagar, Noakhali, Panchhari, Patiya, Ramgati, Rangamati, Rangunia, Ruma, Sandwip, Sarail, Satkania, Sitakunda, Sonaimuri, Teknaf, Thanchi, Ukhiya, Ulukandi.

In **Dhaka**, 300 incidents killing 130 people were reported. The following locations were affected: Adabar, Agargaon, Alfadanga, Aminpur, Ashulia, Astagram, Atghar, Azimpur, Badda, Bagat West Para, Bahadurabad, Bakshiganj, Balipara, Bananani, Board Bazar, Chandra, Chawk Bazar, Dakshinkhan, Daulatpur, Demra, Dewanganj, Dhaka, Dhanmondi, Faridpur, Fulbaria, Gafargaon, Gazaria, Gobalpur, Gopalpur, Gulshan, Hemayetpur, Hossainpur, Islampur, Jamalpur, Jatrabari, Joydebpur, Kakrail, Kalabagan, Kalatala, Kaliakair, Kallyanpur, Kalyanpur, Kanchpur, Karwanbazar, Kashimpur, Keraniganj, Khaliajuri, Khilgaon, Khilkhet, Kishoreganj, Kotwali, Lohajang, Madaripur, Madhukhali, Madhupur, Maghbazar, Melandaha, Mirpur, Mohakhali, Mohammadpur, Motijheel, Mugdapara, Muktagacha, Munshiganj, Mymensingh, Nabagram, Nagarkanda, Naljani, Nandail, Narayanganj, Naria, Narsingdi, Nayapaltan, Netrokona, Nischintapur, Pallabi, Paltan, Pangsha, Paribagh, Pilkhana, Purbadhala, Raipura, Ramna, Rampura, Sadarghat, Sarishabari, Savar, Shahbagh, Shariatpur, Shatvagia, Shiddheswari, Shyamoli, Sirajdikhan, Sreebardi, Sreenagar, Sreepur, Sribordi, Taltia, Tangail, Tangali, Tejgaon, Tongi, Uttar Khan, Zajira.

In **Khulna**, 99 incidents killing 43 people were reported. The following locations were affected: Abhaynagar, Assasuni, Bagerhat, Batiaghata, Benapole, Boro Kamarkundu, Chowgacha, Chuadanga, Damurhuda, Digha, Fakirhat, Harinakunda, Jenaidah, Jessore, Jhenaidah, Jhikargachha, Jibannagar, Jilerdanga, Kalia, Kaliganj, Kancherkol, Khulna, Kotchandpur, Kushtia, Lohagara, Magura, Maheshpur, Manirampur, Morrelganj, Narail, Phultala, Satkhira, Shaikupa, Shalikhha, Sharsha, Shyamnagar, Tala.

In **Rajshahi**, 83 incidents killing 41 people were reported. The following locations were affected: Bagmara, Bera, Bogra, Bonpara, Chapai Nawabganj, Chatmohar, Dayarampur, Dhamoirhat, Durgapur, Foradpur, Gabtali, Gabtoli, Joypurhat, Lalpur, Mohanpur, Nagaon, Naldanga, Naogaon, Natore, Nawabganj, Pabna, Raiganj, Rajshahi, Sahapur, Saidabad, Santahar, Santhia, Shahjadpur, Sherpur, Shibganj, Singra, Sirajganj, Tanore, Ullapara.

In **Rangpur**, 52 incidents killing 26 people were reported. The following locations were affected: Baigram, Baliadangi, Bhurungamari, Bochaganj, Boda, Dahagram, Dalagram, Debiganj, Dimla, Gaibandha, Gobindaganj, Haripur, Hatibanda, Khadim Nagar, Kurigram, Lalmonirhat, Nilphamari, Nischintapur,

Panchagarh, Phulbari, Phulchhari, Pirganj, Polashi, Rangpur, Rowmari, Sadullapur, Sundarganj, Tentulia, Thakurgaon.

In Sylhet, 40 incidents killing 12 people were reported. The following locations were affected: Bahubal, Beanibazar, Bishwanath, Chhatak, Chunarughat, Dakshin Surma, Derai, Dharmapasha, Gopaya, Gowainghat, Habiganj, Jaintiapur, Madhabpur, Motiganj, Moulvibazar, Narapati, Srimangal, Sunamganj, Sylhet, Tengra.

METHODOLOGY

The data used in this report was collected by the Armed Conflict Location & Event Data Project (ACLED). ACLED collects data on reported conflict events in selected African and Asian countries, Bangladesh being among them. ACLED researchers collect event data from a variety of sources and code them by date, location, agent, and event type. For further details on ACLED and for the full data, see www.acleddata.com und [Raleigh; Linke; Hegre, and Karlsen, 2010](#).

Based on these data, the Austrian Centre for Country of Origin & Asylum Research and Documentation (ACCORD) compiles updates on conflict incidents.

Incidents comprise the following categories: battle, headquarters or base established, non-violent strategic activities, riots/protests, violence against civilians, non-violent transfer of territory, remote violence. For details on these categories, please see

- ACLED – Armed Conflict Location & Event Data Project: Armed Conflict Location and Event Data Project (ACLED) Codebook; ACLED - ASIA, 2015
http://www.acleddata.com/wp-content/uploads/2015/07/ACLED_Codebook_2015_ASIA-CR.pdf
- ACLED – Armed Conflict Location & Event Data Project: Armed Conflict Location and Event Data Project (ACLED) Codebook, 2017
http://www.acleddata.com/wp-content/uploads/2017/01/ACLED_Codebook_2017.pdf
- ACLED – Armed Conflict Location & Event Data Project: User Guide, January 2017
http://www.acleddata.com/wp-content/uploads/2017/01/ACLED_User-Guide_2017.pdf

SOURCES

- ACLED – Armed Conflict Location & Event Data Project: ACLED Asia Running file January to December 2015 Version 2, April 2016
<http://www.acleddata.com/wp-content/uploads/2016/04/ACLED-Asia-Running-file-January-to-December-2015-V2.xlsx>
- ACLED – Armed Conflict Location & Event Data Project: ACLED Asia Running file January to December 2016, February 2017
<http://www.acleddata.com/wp-content/uploads/2017/02/ACLED-Asia-Running-File-2016.xlsx>
- CIA – U. S. Central Intelligence Agency: China and India, 2006
<http://hdl.loc.gov/loc.gmd/g7820.ct002746>
- GADM – Global Administrative Areas: BGD_adm.zip, Version 2.8, November 2015a
http://biogeo.ucdavis.edu/data/gadm2.8/shp/BGD_adm.zip
- GADM – Global Administrative Areas: gadm28_levels.shp, Version 2.8, November 2015b
http://biogeo.ucdavis.edu/data/gadm2.8/gadm28_levels.shp.zip

- Natural Earth: Admin 0 – Breakaway, Disputed Areas, Version 3.1.0, undated
http://www.naturalearthdata.com/http://www.naturalearthdata.com/download/10m/cultural/ne_10m_admin_0_disputed_areas.zip
- Raleigh, Clionadh; Linke, Andrew; Hegre, Håvard, and Karlsen, Joakim: "Introducing ACLED-Armed Conflict Location and Event Data", in: Journal of Peace Research (47(5) 2010), pp. 651–660
<http://jpr.sagepub.com/content/47/5/651.full.pdf+html>
- Smith, Walter H. F. and Wessel, Paul: Global Self-consistent Hierarchical High-resolution Geography (GSHHG), Version 2.3.4, 1 May 2015
<https://www.ngdc.noaa.gov/mgg/shorelines/data/gshhg/latest/>

DISCLAIMER

Most of the data collected by ACLED is gathered based on publicly available, secondary reports. It may therefore underestimate the volume of events. Fatality data particularly is vulnerable to bias and inaccurate reporting, and ACLED uses the most conservative estimate available. Furthermore, event data may be revised or complemented in future updates. The lack of information on an event in this report does not permit the inference that it did not take place. The boundaries and names displayed do not imply endorsement or acceptance by the Austrian Red Cross.

Cite as

- ACCORD – Austrian Centre for Country of Origin & Asylum Research and Documentation: Bangladesh, year 2016: Update on incidents according to the Armed Conflict Location & Event Data Project (ACLED), 8 February 2017