

# CENTRAL AFRICAN REPUBLIC (CAR)

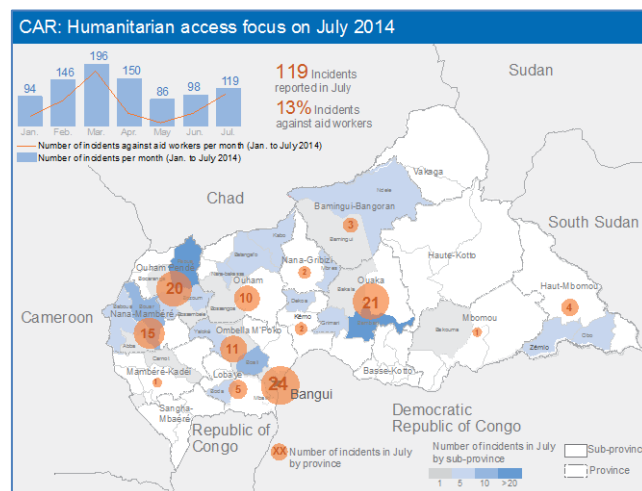
## Situation Report No. 37 (as of 6 August 2014)



This report is produced by OCHA CAR in collaboration with humanitarian partners. It covers the period between 30 July and 6 August 2014. The next report will be issued on or around 13 August 2014.

## Highlights

- Clashes in Bantangafo (Ouham Province) caused an estimated 20,000 new displacements inside the town and thousands more on major roads in the region.
- Humanitarian access continues to be hindered by various constraints.
- Since January, more than 890 security incidents have been recorded, of which 119 (13 per cent) were in July.
- ICRC is providing water for 15,000 IDPs in Bambari (Ouaka Province). TGH provided chlorination services for 26 water points used by IDPs in the sites.
- Refugees in the Pladama Ouaka refugee camp near Bambari are dependent on WFP's food distribution.



**512,700**

IDPs in CAR, including

**87,700**

IDPs in Bangui

**39%**

Funding available (about US\$220 million) against the revised SRP requirements of \$565 million

**4.6 million**

Population of CAR

**2.5 million**

People in need of assistance

Sources: OCHA, CMP, Protection Cluster and FTS

## Situation Overview

Humanitarian access continues to be hindered by various constraints, particularly violence against civilians (including aid workers/assets), interference in implementing humanitarian activities and active hostilities. Since January, more than 890 security incidents have been recorded, of which 119 (13 per cent) were reported in July.

Fighting between anti-Balaka and ex-Seleka elements on 30 and 31 July in Bantangafo (Ouham Province) caused renewed displacements, with an estimated 20,000 people displaced inside the town and thousands more on major roads in the region. Violent clashes on 4 August affected the humanitarian situation, hindering humanitarian access to affected people. An inter-agency assessment team has been set up in Kaga Bandoro (Nana Grebizi Province). It will visit Bantangafo on 11 August to identify affected people's needs, if the security situation permits. Two assessment missions are ongoing, including civil-military coordination, to assess humanitarian and access issues in Bouca (Ouham Province), which hosts many IDPs from Bantangafo.

Following recent clashes in Bambari (Ouaka Province), the CAR Senior Humanitarian Coordinator, Claire Bourgeois, conducted a four-day visit to the town, at the end of which, said she was distraught seeing how social cohesion had broken down in less than three months. "It is so sad to see the atmosphere prevailing in the city: everyone has been affected by the situation. Residents say Bambari used to be known as the 'Switzerland of CAR', but they say it has now become unrecognizable. I appeal to all to make the utmost efforts to resume dialogue," said Ms. Bourgeois.

An estimated 27,710 displaced people from the city and surrounding areas fled their homes due to violence. Despite the difficulties of operating in Bambari, about 20 humanitarian actors are providing assistance in sectors such as social cohesion, protection, health, food security, water and sanitation, and shelter. On 2 August, UNFPA donated a new ambulance to the town, worth US\$50,000, and two delivery beds.

The Commission on Population Movement reports that an estimated 87,700 people are still displaced in Bangui, with the M'Poko airport site holding the largest number of IDPs in the city (21,650). This large decrease in the number of IDPs in Bangui in the past week is mainly due to PU-AMI using a more reliable tool for counting internally displaced persons (IDPs) at the M'Poko site.

Solidarite carried out a multisectoral rapid-response mechanism assessment in Farazala village, Kabo sub-province (Ouham Province). It revealed dire NFI and food security needs. About 85 per cent of households in the village require food security assistance, and 552 displaced households have almost no food stocks. The local school has been closed since December 2012.

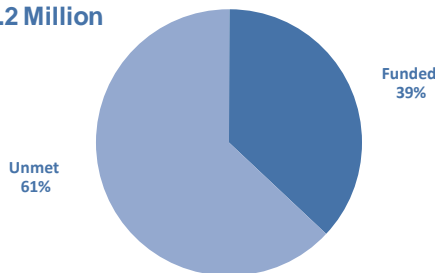
The CAR Prime Minister, André Nzapayeke, and his Government resigned on 5 August. This followed a three-day peace forum held in Brazzaville, Republic of Congo, during which an agreement was signed to end hostilities between anti-Balaka and ex-Seleka groups.

## Funding

The CAR Strategic Response Plan (SRP) is 39 per cent funded. Early recovery, education, nutrition and emergency shelter are the least-funded sectors.

### CAR - FUNDING: STRATEGIC RESPONSE PLAN 2014

**\$565.2 Million**



All humanitarian partners, including donors and recipient agencies, are encouraged to inform OCHA's Financial Tracking Service (FTS - <http://fts.unocha.org>) of cash and in-kind contributions by e-mailing: [fts@un.org](mailto:fts@un.org)

Sector	% Funded	Requirements	Funded	Unmet
Food Security	47%	180.00	85.06	94.94
Protection	8%	74.00	6.26	67.74
Health	31%	64.32	19.78	44.54
Early Recovery	3%	60.00	1.65	58.35
Emergency Shelter	15%	33.54	4.88	28.66
Education	9%	33.00	3.03	29.97
WASH	36%	27.50	9.88	17.62
MS Refugees	2%	22.68	0.54	22.15
Nutrition	34%	22.55	7.62	14.93
CCCM	0%	20.00	-	20.00
Coordination	30%	15.50	4.66	10.84
Logistics	79%	10.20	8.07	2.14
Emergency Telecommunications	19%	1.91	0.36	1.55
Cluster Not Yet Specified	0%	-	66.67	-

On 22 July, the Senior Humanitarian Coordinator in CAR launched the third Common Humanitarian Fund (CHF) special allocation for US\$7 million. This allocation will contribute towards funding humanitarian activities in the SRP, particularly focusing on projects outside of Bangui.

## Humanitarian Response



### Camp Coordination and Camp Management (CCCM)

#### Needs:

- The rainy season requires CCCM actors and partners to quickly find solutions for IDPs living in the most at-risk sites and who are unable to return home before the rainy season.
- Coordinate provision of assistance and protection in IDP sites in Bangui and support site authorities.
- Facilitate the voluntary return of IDPs leaving sites.
- Assess sites, support CCCM activities and strengthen the capacity of CCCM actors and partners outside Bangui.

**501,980**

People targeted in 2014.

**Response:**

- The Government has suspended the set-up of the Boganda 1 and Patassé alternative sites, as it has identified a possible new site (AVICOM site). Discussions are under way between authorities and international forces to assess the possibility of securing the site prior to site planning and set-up.
- The CCCM cluster continues to monitor assistance-and-protection concerns in sites in Bangui. It is referring gaps in assistance and protection to the relevant clusters, helping site authorities resolve problems and liaising with the national and local authorities.
- There are 40 sites hosting IDPs in Bangui, of which nine are hosting less than 100 IDPs. These sites will be prioritized in order to facilitate the voluntary return of IDPs, or to better ensure access to humanitarian assistance.
- With the aim of setting up a strategy on returns and other durable solutions, the cluster helped to develop terms of reference for the 5<sup>th</sup> pillar on reconstruction and assistance towards durable solutions.

**Gaps and constraints:**

- More funding is required to better address site-management needs and improve communication with IDPs.
- The rainy season is worsening the already precarious living conditions of IDPs in sites, especially regarding shelter and WASH. The limited resources available are insufficient to cover the needs.
- Insecurity and access constraints hinder CCCM coverage outside of Bangui.


**Education**
**Needs:**

- Temporary safe learning spaces (ETAPes) with age-sensitive educational and recreational activities and child-protection services for 362,000 people are needed.
- Emergency recreational, teaching and learning materials for ETAPes and schools are required for 362,000 people.
- 5,000 teachers need psychosocial training.
- School-feeding activities, particularly in provinces with a low rate of student returns, are required for 400,000 people.

**362,000**

People require ETAPes with age-sensitive educational and recreational activities and child-protection services.

**Response:**

- Since January, 34,555 children have benefitted from learning and protection activities in 144 ETAPes in Bangui, Bossangoa and Boda. Children aged between 3 and 18 have received access to basic education in displacement sites.
- A total of 354 teachers and instructors were trained in psychosocial support to children.
- School-feeding programmes are ongoing countrywide. So far, 201,884 students have benefitted from these programmes in 12 provinces and Bangui.
- Emergency rehabilitation and construction activities have been completed in 40 schools providing solid learning and recreational spaces to 12,812 students who attend the schools.

**Gaps and constraints:**

- The cluster is only 9.2 per cent funded.
- Population movements are challenging the provision of structured education and child-protection activities.
- Organize psychosocial trainings for teachers to ensure that children have access to adequate trauma care.


**Food Security**
**Needs:**

- According to the April multi-agency IPC, the food security situation remains precarious throughout CAR. Some 45 per cent of the rural population (1.7 million people) are food insecure. Increased food assistance, nutrition support and agricultural inputs are needed to assist food-insecure vulnerable people, and to support crisis-hit farmers to plant for the current agricultural campaign to avert a large-scale food and nutrition crisis in the coming months.
- Rainfall data from April to June indicates that the weather has been drier than average. There have been significant rainfall deficits in the north-west, particularly in the main agricultural areas of Ouham and Ouham Pendé and areas north of Bangui. Food needs in these areas are expected to continue throughout the agricultural season.
- According to the markets and food security assessment carried out in April by FAO and WFP, CAR needs a long and expensive humanitarian operation over at least the next 18 months to stem the growing toll and to help rebuild livelihoods.

**1.7 million**

People are food insecure.

**Response:**

- In July, WFP assisted an estimated 371,606 people, of whom nearly 40 per cent were located in IPC 4 emergency food insecure areas. Alongside the general food distribution to vulnerable groups, IDPs and food-insecure farmer households, nearly 32,736 children under age 5 received nutritious blanket-feeding packages.
- In July, WFP distributed seed-protection rations to 226,466 people, of whom 46 per cent were located in the IPC 4 areas and the main agricultural areas.
- Approximately 50,410 primary-school children received hot meals in July, and 4,811 malnourished children aged 6 months to 59 months, pregnant and lactating women and people living with HIV/AIDS received a nutritious meal.
- A local purchase mission from the WFP regional office was in Bangui. It explored possibilities of stimulating agricultural local production through WFP's Purchase for Progress programme. The mission met with FAO and Government representatives.
- The cluster is participating in the preparatory phases of the crop and food security assessment mission, which will provide a global evaluation of agricultural production and overall food availability.
- FAO launched seed distributions for the second agricultural cycle in Moyen-Sido (Ouham Province) with the support of its partner INTERSOS. These distributions were carried out in response to the needs identified through a joint assessment following the relocation of people from Bangui's PK12 neighbourhood. These distributions reached 4,040 households including displaced and host families, each receiving 25kg of maize and peanut seeds.
- FAO is training 250 young graduates on the integrated approach "caisses de résilience", and more specifically on the savings and loan system and farmer field schools.

**Gaps and constraints:**

- Despite increases in deliveries and the number of people assisted, challenges remain due to the rainy season, poor road conditions, and insecurity along the roads and at distribution sites.
- WFP requires \$1 million to strengthen the Food Cluster's support for six months in collaboration with FAO.

**Health****Needs:**

- A rapid assessment is required in Batangafo and surrounding areas after the recent armed conflict.
- Medical supplies are required for the National Blood Bank, to ensure continuous access to free health care including blood transfusions.
- Finalize the mental-health strategy document and its implementation plan, which includes response to mental-health issues in and around Bangui.
- The distribution of long-lasting treated mosquitoes nets needs to be scaled up countrywide.

**878,000**

People targeted in 2014.

**Response:**

- The fourth vaccination campaign (African Vaccination Week) was launched on 29 July in various health regions.
- On 30 July, a workshop was held in Bangui to validate the free health-care strategy in CAR for the next 12 months. The ceremony was chaired by the Ministry of Health and attended by health partners.
- A preliminary workshop on detecting and treating Human African Trypanosomiasis in the Sanga Mbaéré and Lobaye regions is scheduled in two weeks.
- In Bangui, the IOM mobile health clinic provided 550 consultations at four IDP sites. It visited the Malian transit site twice to conduct health checks.

**Gaps and constraints:**

- Additional funding is required to implement the new mental-health response strategy.
- Additional logistical support is required to complete the decentralization of blood banks to ensure easier access to safe transfusions outside of Bangui.
- Due to insecurity, some regions remain inaccessible for the monitoring and control of communicable diseases. This poses a risk to CAR, following the high risk of outbreaks in neighbouring countries such as Cameroon and South Sudan, which are experiencing cholera outbreaks. This is compounded by the Ebola risk to the entire region.
- Lack of financial resources to support the returnees in Bangui from IDPs sites.
- Humanitarian access is impeded by armed conflicts in the areas affected.



## Logistics

### Response:

- The cluster continues to collect, compile and share information regarding road transportation from Bangui to various field locations.
- The cluster is organizing a support mission for a UNHRD technician who will assist in erecting mobile storage units in the provinces.
- Between 28 July and 3 August, UNHAS transported 422 passengers and 5.79 mt of supplies, organized one medical evacuation and one special flight.
- Updated information was shared on the Logistics Cluster website regarding UNHAS flights and Logistics Cluster information: <http://logcluster.org/ops/caf13a>

### Gaps and constraints:

- Poor infrastructure and insecurity along the main roads remain a logistical challenge, obstructing the humanitarian logistics chain.
- The rainy season will make operations more difficult, as the road conditions will worsen and prolong transportation time.
- Access to national service providers remains a challenge in Bangui and in the provinces.
- There is no fuel network outside of Bangui, so it is crucial to pre-position stocks in the provinces.



## Multi-sector assistance to refugees

### Needs:

- Refugees require protection activities including advocacy, verification/registration to find suitable durable solutions, SGBV prevention and response, and child protection.
- Provide multisectorial assistance to urban refugees and refugees living in camps, including food, primary and secondary health care, reproductive health and HIV/AIDS.
- Sensitize refugees on reproductive health and school enrolment.

**501,980**

Vulnerable people targeted in 2014.

### Response:

- WFP's general food distribution, comprising maize, corn, soya blend, beans and salt, was carried out on 31 July and 1 August in the Pladama Ouaka refugee camp in Bambari. Prior to this crisis, these refugees were almost self-sufficient through income-generating activities, including agricultural activities. They are now dependent on WFP's food assistance.
- In Zemio, 23 pregnant women, including 19 refugees and four women from host communities, were vaccinated against tuberculosis. Ten refugee children were vaccinated against measles.
- WHO carried out routine vaccinations in the Pladama Ouaka refugee camp in Bambari. About 99 children under age 11 and 266 children aged between 12 and 59 months were vaccinated against measles and anthelmintic. About 35 pregnant women and 12 lactating women were vaccinated against tetanus.
- In Zemio, IMC performed medical screenings on 425 patients, of whom 270 were refugees and 155 from host communities. This number also includes 125 children under age 5, of whom 73 are refugees and 52 from the host community. The main disease diagnosed remains malaria, with 204 cases among the screened patients, and 80 cases among children under age 5. Sensitization on malaria is performed at all health centres.

### Gaps and constraints:

- Absence of a permanent international force to secure the Pladama Ouaka refugee camp in Bambari (Ouaka Province).



## Nutrition

### Needs:

- Some 28,000 children will suffer from severe acute malnutrition (SAM) in 2014, and 75,500 children will suffer from moderate acute malnutrition (MAM). These numbers could rise, given ongoing aggravating factors (displacement, poor food security, deteriorated access to clean water and sanitation, increased morbidity and lack of health-care services) and the start of the rainy season/hunger gap.
- About 16,800 children suffering from SAM are targeted for treatment in 2014.

**28,000**

Children will suffer from severe acute malnutrition in 2014.

- An estimated 159,000 children under age 5 need highly nutritious foods. A consistent and adequately funded pipeline is needed to prevent a deterioration of nutritional status during the rainy season.

#### Response:

- Since 1 January, 14,107 children have been admitted for SAM treatment across the country, of whom 6,659 have recovered. The overall performance indicators of case management remain within global standards.
- The performance rates represent 82 per cent of the SRP target of 16,800 children suffering from SAM. Since January, 14,156 children have been treated for MAM. Nutrition supplements were also provided to 5,000 malnourished pregnant and lactating women. A total of 5,400 people living with HIV/AIDS and on ART enrolled in the food-by-prescription activity. WFP provided food rations to more than 4,500 caretakers of children with SAM.
- Nutrition partners continue screening children for malnutrition. Since 1 January, 117,321 children have been screened. This represents 31 per cent of the SRP target of 360,000 children.
- According to the Nutrition Cluster's mapping, there are 169 out-patient therapeutic programmes, 29 in-patient therapeutic programmes and 96 targeted supplementary feeding programmes functional in CAR.
- INTERSOS in Bangui screened 141 children in eight sites, including the Don Bosco, Guitangola, St Charles Lwanga and St Jaques Keptene sites. Findings revealed 59 MAM cases and six SAM cases.
- UNICEF continues to support malnutrition case finding, surveillance and case management in Yaloke and Boda. A supervision mission was carried out in Boda to visit vulnerable people in at-risk communities. The visit aimed to strengthen presence onsite and to provide necessary supplies for SAM management through implementing partners ALIMA and AHA.

#### Gaps and constraints:

- Coverage of community-based management of acute malnutrition services outside of Bangui remains low due to security constraints.
- There is a gap in the provision of activities to support infant and young child feeding.
- Limited progress was made in treating MAM due to the lack of nutrition partners' engagement. The only organizations involved in MAM treatment are MSF, AHA, INTERSOS, Ami d'Afrique and Caritas. In June, WFP expanded its programme to reach 96 health facilities in 12 provinces.



## Protection

#### Needs

- Increase protection for people affected in hotspots, particularly IDPs in Batangafo, Bouca and Bambari.
- Identify solutions for two IDP sites in Bambari where IDPs (mainly women, girls and children) are living in difficult conditions in the immediate vicinity of international military forces.
- Mobilize additional resources to increase child disarmament, demobilization and reintegration programmes, as well as quality psychosocial support to children identified as associated with armed groups and those affected by conflict and armed violence.
- Advocacy with armed groups needs to be strengthened to ensure respect for basic human rights, including UN frameworks governing children in armed conflict.
- Ensure quality case management for child-protection cases, particularly outside Bangui where the capacity and quality of services provided by humanitarian actors remains limited.

**2 million**

Vulnerable people targeted in 2014

#### Response:

- Following the escalation of violence in the Batangafo and Bouca (Ouham Province) region, the Protection Cluster issued a strong advocacy note for belligerents and international military forces in CAR. It called on the belligerents not to target civilians and to respect their rights. The cluster urged all parties involved to ensure unhindered humanitarian access to affected areas for the immediate delivery of humanitarian assistance. The cluster urged international forces in CAR to ensure the protection of civilians in order to prevent massive displacement.
- From 8 July to 5 August, the cluster hosted a mission from UNHCR's Department of International Protection and the Global Protection Cluster to help CAR authorities and humanitarian actors set-up an IDP policy for CAR and the domestication of the AU Kampala Convention on protection and assistance to IDPs. A road map was developed to set up a national IDP policy. A technical working group jointly led by the Ministry of Health,

Social Affairs and Humanitarian Action and the CAR Protection Cluster was established, with the support of UNHCR and the Senior Humanitarian Coordinator in CAR.

- Following the Humanitarian Country Team's recommendation, a joint mission of the Protection Cluster, comprising UNHCR and UNICEF, was organized from 31 July to 3 August to Yaloké (Ombella Mpoko Province), where hundreds of IDPs have been identified as at risk. The mission registered 579 people (113 families). Findings revealed that 100 per cent of these people expressed the intention to leave Yaloké as soon as possible. About 62 per cent of these IDPs have family members in Cameroon and Chad.
- From 30 July to 2 August, UNHCR led a mission to Bocaranga and Kouï to monitor the protection situation. The findings confirmed a progressive return movement of IDPs from the Muslim community to Bocaranga and Kouï.
- UNICEF and its partners registered some 27 unaccompanied or separated children in Bangui, Bossangoa and Bambari. Family tracing and reunification procedures for six unaccompanied children have been initiated. Three children were reunified with their families.
- About 80 children, including 19 girls and 61 boys, were verified as associated with the anti-Balaka in Bangui's PK12 neighbourhood. Activities are under way to ensure reintegration, psychosocial support and transitional care for these children, including the preparation of 25 host families for transitional care. So far, 1,429 children, including 312 girls, have been extracted from armed groups since December 2013. New verification activities are ongoing in Bambari (Ouaka Province) and Bangui where children continue to be exploited by armed groups.
- Some 1,570 people, including 725 children, had access to mine/unexploded ordnance risk education in order to better protect them from the effects of these weapons. Awareness-raising activities were conducted in and around Bangui, particularly in the PK5 neighbourhood.
- Twenty CAR national army members (FACA), 21 UPDF armed forces and 14 civil-society representatives in Obo (Haut-Mbomou Province) were briefed on child-protection MRM concepts and tools (UN resolution 1612). Thirty-three MISCA soldiers received similar trainings in Bangui, while 60 community members in Bambari were sensitized on preventing child recruitment into armed groups.

#### Gaps and constraints:

- Persistent fighting and general violence against civilians in some regions, particularly Ouham and Ouaka Provinces, led to massive population displacement.
- The tense security situation in and around Batangafo, Bouca and in other areas impeded access to areas where protection activities are required.
- Recent heavy rains have hindered children's access to recreational activities and damaged temporary child-protection structures in several areas.



#### Emergency Shelter and Non-Food Items (NFI)

##### Needs:

- An immediate assessment is required to identify the emergency shelter/NFI needs of people affected by conflicts in Batangafo (Ouham Province).

**703,975**

Vulnerable people targeted in 2014 with emergency shelter and NFIs.

##### Response:

- Following the recent conflict in Batangafo, the Shelter Cluster is supporting inter-agency contingency planning in the area through the identification of available NFI stocks in Batangafo, Kabo, Kaga-Bandoro and Bossangoa.
- In Boda, the Central African Red Cross has distributed 1,000 NFI kits in partnership with IFRC. This assistance targeted vulnerable families living in and around communities at risk.
- UNHCR, with humanitarian partners and the CCCM and Protection Cluster, is undertaking a feasibility study to assess the possibility of supporting 80 vulnerable households in at-risk communities in Boda, through the construction of emergency shelter.
- With Swiss Cooperation funding, the national NGO ARND, also a member of the Shelter/NFI Cluster, will support 120 families in need of shelter assistance in Ngaoundaye and Bocaranga (Ouham Pendé Province).
- In Bangui, PU-AMI rehabilitated 15 community shelters in the Grand Séminaire and Padre Pio sites and constructed three community shelters in the Maison Micheline's site.
- On 2 August, IOM and the Mayor of Kabo (Ouham Province) oversaw the distribution of 193 household plots to IDPs relocated from Bangui's PK12 neighbourhood in April. About 127 households received the plots while farming plots had already been distributed.
- IOM is constructing two Peace Villages in Kabo and Moyen Sido to host IDPs. IOM is targeting 300 IDPs and local youths to help build shelters for IDPs. This will help to develop their vocational skills by learning from 30 master masons and carpenters.

**Gaps and constraints:**

- All Shelter/NFI Cluster members, including donors and implementing agencies, are strongly encouraged to report all contributions on the Financial Tracking Service [<http://fts.unocha.org>].

**Emergency Telecommunications****Response:**

- ETC continues to support radio programming for humanitarian organizations operating in Bangui.
- Two VHF repeaters were deployed to Bambari to provide VHF coverage in the operational area, on channels 3 and 5.
- An assessment was carried out in N'Délé to confirm existing and minimum requirements for the COMCEN deployment and VSAT installation.
- Equipment will be pre-positioned in N'Délé as soon as the situation permits.
- ETC has received \$467,290 from USA/OFDA.
- All ETC information is available at: <http://ictemergency.wfp.org/web/ictopr/emergencies2013/central-african-republic>.

**Gaps and constraints:**

- The lack of secure compounds and/or adequate office space in some common operational locations, including Bambari, N'Délé and Kaga Bandoro, prevent the installation of ETC equipment and deployment of services.

**Water, Sanitation, Hygiene****Needs:**

- In Bossangoa (Ouham Province), 350 IDPs require WASH support in the Petit Seminaire site (formerly Eveche), where 18 latrines are nearly full and new ones need to be constructed.
- In and around Bossangoa, 35,000 returnees and IDPs in host communities need WASH assistance, particularly access to potable water.
- Following attacks around Batangafo, 5,137 people sought refuge in two villages near Bouca, Boya 1 and Bozacon. WASH support is required due to open defecation and the lack of clean water sources in the area.
- Due to fighting in Batangafo, 552 families who arrived in Farazala (Kabo sub-province along the Batangafo-Ouandago axis) need WASH support.
- In Kaga Bandoro, 11,554 IDPs in the Eveche site and 2,455 IDPs in the Nativite site require WASH support.
- In Grimari, 8,117 IDPs in the Paroisse site need WASH support
- In Bambari, about 15,000 IDPs in three sites require WASH support.

**35,000**

Returnees and IDPs in host communities require WASH assistance in Bossangoa

**Response:**

- In Kaga Bandoro (Nana Grebizi Province), ICRC, CARITAS and UNICEF distributed about 3.1 litres per person per day of potable water through trucking to 11,554 IDPs. ICRC installed a hand pump that can provide up to 3.6 litres per person and per day. Twenty-five new latrines were built with a cumulative total of 100 structures for a ratio of 116 people per latrine. The Central African Red Cross provided hygiene-promotion services through its 12 hygiene promoters. In the Nativite site, ICRC trucked 88 m<sup>3</sup> of potable water to 2,455 people (about 5.1 litres per person per day).
- In Bouar (Nana Mambere Province), with UNICEF support, SODECA provided potable water to 10,000 people. With the support of Mercy Corps, SODECA repaired the electrical connection to the water pumping station serving the Elevage and Centre Administratif neighbourhoods.
- In Yaloke (Ombella M'poko Province), UNICEF distributed soap and jerry cans to 613 IDPs.
- In Bossangoa, through the support of SODECA and UNICEF, 35,000 people are receiving about 14.9 litres of potable water per person per day. SODECA is providing up to about 57 litres per person and per day to 350 IDPs in the Petit Seminaire site.
- Along the Bossangoa axis, ACF rehabilitated seven out of 12 planned boreholes and has identified 50 hand pumps in returnee zones requiring repair services.
- In Bambari (Ouaka Province), about 15,000 IDPs in over three sites continue receiving 16 m<sup>3</sup> of water/day provided by ICRC. TGH provided chlorination services to 26 water points used by IDPs in the three sites. CRF carried out hygiene-promotion activities addressing hand washing, environmental and food hygiene issues to 3,900 IDPs in site M (close to the MISCA base).

- In Grimari (Ouaka Province), 8,117 IDPs at the parish received 30 m<sup>3</sup> of drinking water/day and hygiene-promotion services, including advice on hand washing, food hygiene and the use of latrines.

**Gaps and constraints:**

- WASH response in Bosakon and Boya 1 by the RRM team and DRC is impeded by insecurity.
- No WASH contingency plan exists for the regions outside Bangui.
- The lack of coordinated operational response in key areas with people at risk hampers the synergy between humanitarian actors and the application of the “Do No Harm” approach.
- Solid-waste and sludge-disposal facilities are inadequate around Bangui. They need to be rehabilitated.

## General Coordination

OCHA will coordinate the humanitarian response in Bouca and Batangafo from Bossangoa, Kaga Bandoro and Kabo, including the pre-positioning of stocks for about 40,000 people. RRM is planning assessment missions in the region.

On 7 August, OCHA Head of Office Francois Goemans will travel to Bouca for a two-day assessment mission. The aim is to assess the humanitarian situation in Bouca and Batangafo.

For further information, please contact:

**Francois Goemans**, Head of Office, goemans@un.org, Tel: +236 70 73 87 30

**John James**, Head of Public Information and Information Management Unit, calvinjames@un.org, Tel: +236 70 85 75 90

**Laura Fultang**, Public Information Officer, fultangl@un.org, Tel: +236 70 18 80 64

For more information, please visit [www.unocha.org/car](http://www.unocha.org/car) or [reliefweb.int](http://reliefweb.int)