

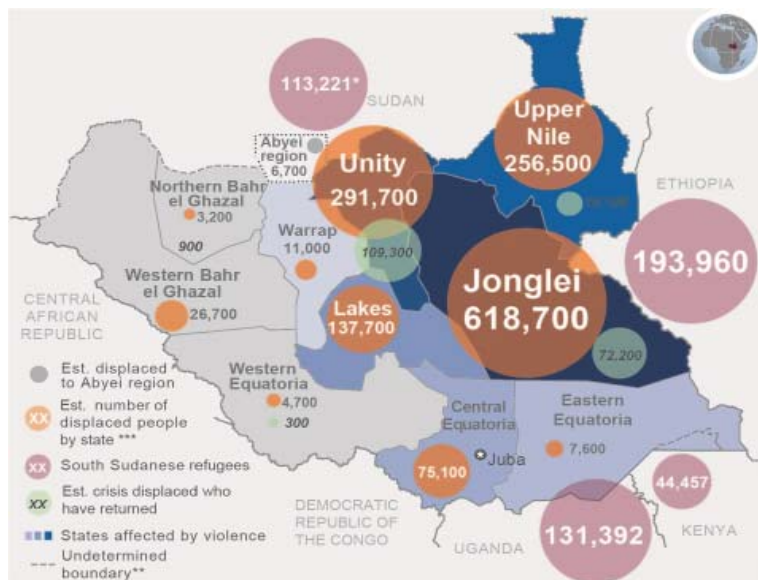
# South Sudan Crisis

Situation Report No. 66 (as of 12 December 2014)



This report was produced by OCHA South Sudan in collaboration with humanitarian partners. It covers the period from 6-12 December. The next report will be issued on or around 19 December 2014.

## Highlights



- Partners finalized the planning process for 2015. The Humanitarian Response Plan for 2015 seeks \$1.8 billion to assist 4.1 million people.
- Fighting continued to be reported in Fangak, Jonglei State, displacing thousands of people to different locations.
- Tuberculosis, HIV and AIDS were the most common causes of death during the month of November in displacement and Protection of Civilian sites.
- Fourth round of nationwide polio immunization campaign reached 2,431,388 out of the targeted 3.3 million children.

**3.8 million**

People to be assisted by the end of the year

**3.5 million**

People reached with humanitarian assistance\*

**1.91 million**

People displaced by conflict since December 2013

**\$600 million**

Required for life-saving assistance by February 2015

\* This includes people internally displaced, refugees from other countries sheltering in South Sudan and other vulnerable communities who have received assistance since January 2014. This does not imply that the needs of these people have been comprehensively met.

## Situation overview

Fighting persisted in Fangak County, Jonglei State with reports indicating that people continued to flee the violence to different locations. As of 8 December, an estimated 43,200 people were displaced in Old Fangak town. Of these, an estimated 25,000 were newly-displaced from the areas of New Fangak and Pigi/Canal, with reports of continued arrivals. There were unverified reports of people moving from Fangak County into Ayod County within Jonglei State. In Upper Nile State, Malakal town remained relatively calm over the past week but exchange of gunfire was reported in Nasir County. Fighting was also reported northeast of the area of Renk bordering Sudan. Inter-communal tensions remained high in Rumbek town, Lakes State. On 9 December, one person was reportedly killed in Makuric village near the hospital in Lakes State. Persistent insecurity in this area disrupted activities at an aid agency warehouse.

Although no new cholera cases have been reported in the last two weeks, health partners remained vigilant with surveillance ongoing. The number of suspected cases of measles continued to decline, due to a series of measles vaccination campaigns, which were conducted to contain outbreaks in Internally Displaced Persons (IDP) camps and in the Protection of Civilians (PoC) sites within UN bases. Aid agencies highlighted that Tuberculosis, HIV and AIDS were the most common causes of death in November in IDP and PoC sites, accounting for five of the 14 deaths early November (36 per cent) and three of the 12 deaths in the last weeks of November (25 per cent). This highlights the need to strengthen HIV and AIDS services in the sites.

[www.unocha.org/south-sudan](http://www.unocha.org/south-sudan)

The mission of the United Nations Office for the Coordination of Humanitarian Affairs (OCHA) is to mobilize and coordinate effective and principled humanitarian action in partnership with national and international actors.

**Coordination Saves Lives**

## Humanitarian response

Aid agencies completed the planning process for 2015 working closely with Government authorities to identify the key drivers of need and formulate an effective response. The 2015 Humanitarian Response Plan (HRP) aims to reach 4.1 million people of the estimated 6.4 million people estimated to be at risk of food insecurity. The HRP has three strategic objectives: saving lives and alleviating suffering; protecting the rights of the most vulnerable; and improving self-reliance and coping capacities. Of the \$1.8 billion needed for 2015, aid agencies are asking for some \$600 million by February 2015 to enable them to take advantage of the dry season to pre-position supplies and fix roads and airstrips to reach more people. The HRP can be downloaded at this link: <http://tinyurl.com/SSHRP-2015>

### Early Warning Working Group launched

A national early warning working group was launched on 9 December with the goal of minimizing the impact of both natural and human-induced hazards. The launch was a follow up to a workshop on 15 October 2014 where partners agreed to establish a multi-agency working group on natural disaster early warning at national level through the Ministry of Humanitarian Affairs and the Relief and Rehabilitation Commission.

### Response in Warjok, Upper Nile State

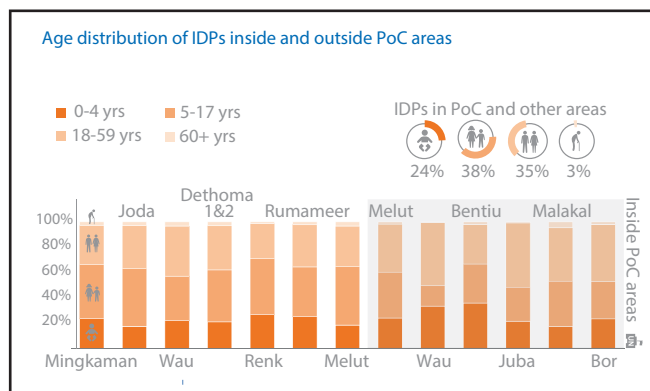
Following an assessment mission in Warjok near Malakal town, Upper Nile State, about 2,400 displaced people were registered and response provided to meet their urgent needs. On 4 December, 460 children under the age of five years old were screened for malnutrition, six of whom were found to be suffering from Severe Acute Malnutrition (SAM), while 30 others had Moderate Acute Malnutrition (MAM). The severely malnourished children were referred to hospital for treatment.



## Camp Coordination and Camp Management

### Response

- **In Juba**, UN House: In PoC3, 15,247 individuals have so far been relocated from Topping, including 1,634 unregistered new arrivals. The CCCM cluster completed two trainings in PoC2 and 3 with the goal of improving community leaders' knowledge on camp management, including clarifying the roles and responsibilities of aid agencies and the community. A new feedback mechanism system has been put in place to improve displaced people's access to information, enable them to interact in a more structured way with partners and provide targeted assistance when possible.
- **In Bor**, Jonglei: A survey was ongoing to establish future intentions of the displaced people after they have been relocated. A public address system was being set up ahead of the planned verification exercise.
- **In Malakal**: A survey on how families are coping with sharing of tents in the new PoC started on 28 November. Backfilling of the new PoC extension also started on 2 December.



### Needs, gaps and constraints

- **In UN House PoC1**, dialogue with the community leadership on the new voucher to be introduced by food partner needs to continue. General food distribution was still on hold.



## Emergency Telecommunication

### Response

- ETC is identifying a long term solution to replace the K-bands in five locations where food partners have presence as part of the Humanitarian Internet Support Project (HISP). A mission to install HISP equipment in Malakal (Unity State) was ongoing.

- A total of 1,318 radios have been programmed in 2014 for 68 humanitarian organizations.

### Needs, gaps and constraints

- ETC funding continue to be an issue. The cluster will participate in the 2015 CHF first allocation.

## Health

### Response

- **Emergency and Rapid Response Teams:** In the past week, an integrated vaccination campaign was conducted in Renk County, Upper Nile State, reaching 26,155 children under 15 with measles and polio vaccines and providing Vitamin A supplements.
- Partner completed an investigation of suspected meningitis reported between 7 October and 18 November in Chotbora, Upper Nile State. The investigation concluded that there were other possible explanations for the illness and it was unlikely to be a meningitis epidemic. Partners supplied medicines and conducted refresher training for staff at the County Health Department (CHD).
- **National Immunization Days (NIDs):** Fourth round of nationwide polio immunization campaign has so far reached 2,431,388 out of the targeted 3.3 million children in seven non-conflict states, four counties in Jonglei and Bentiu PoC.
- **Outbreak and emergency response:** Cholera - no new case were reported during the week. Kala-azar - in 2014, 7,204 cases have been reported with 199 deaths. In 2013, 2992 cases were reported with 88 deaths.

### HEALTH INDICATORS

	Reporting week (Wk 48)	Cumulative since Jan.
People reached with medical interventions	68,086	3,966,005
Outpatient consultations conducted ( )	64,787	2,334,228
Cholera deaths, all locations	0	161
Cholera cases, all counties	0	6,315
Hepatitis E cases, Mingkaman and Bentiu	1	125
Hepatitis E deaths	0	4
Kala azar cases	268	7,204
Kala azar deaths	3	199
Reproductive health: Women provided ANC services	2,923	87,995
Women with assisted deliveries	342	14,438
Women with caesarian sections	34	1,493
People reached with GBV messages	4,018	124,636

Source: Health Cluster, as of 11 December 2014

### Needs, gaps and constraints

- Mental health and psychosocial support for IDPs and vulnerable populations remained challenges.
- Additional centers for diagnosis and treatment of Kala azar in the affected counties and for HIV/AIDS and TB in all displacement and PoC sites are needed. Future training will include some of these activities.

## Logistics

### Response

- **Supplies airlifted:** Over the past week, 191 metric tonnes of supplies were airlifted on behalf of 14 organizations to Bentiu, Boma, Chuil, Koch, Maban, Malakal, Mandeng, Nyal, Paloich, Pochalla, Rumbek, Turkei, Ulang, and Walgak.
- The Cluster was consolidating cargo from partners for the next barge movement to Malakal/Melut. Loading will begin next week in Bor. The Cluster will be transporting all partner's cargo from Juba to Bor.
- In preparation for the dry season, the cluster continued to consult partners regarding pre-positioning plans. In line with the humanitarian community's integrated logistics and pre-positioning plans, warehousing and transport support will be provided where required.
- The Infrastructure Working Group (IWG) continued to meet to identify key infrastructure gaps that need to be addressed during the dry season. A final report will be presented to the HCT by mid-December.

### Needs, gaps and constraints

- **Limited barges:** River transport from Juba continued to be constrained by the limited of barges available on the market. Those available often experience reoccurring mechanical issues with barge pushers causing further delays.
- **Poor road access due to rains:** Access by road is still limited by poor condition but are expected to begin drying out over the next month. The latest access constraints map can be found here: [http://www.logcluster.org/sites/default/files/maps/lc\\_ss\\_774\\_currentroadclosures\\_20141128.pdf](http://www.logcluster.org/sites/default/files/maps/lc_ss_774_currentroadclosures_20141128.pdf)



## Mine Action

### Response

- On 5 December, a Mine Action Road Verification Team completed operations on the Unity Oil Refinery – Manga Junction section of Rubkona-Pariang road. No evidence of mines/explosives remnants of war on the road were found except on the section where an anti-tank mine accident occurred in June 2014. Based on the route assessment, the Rubkona- Pariang road was deemed clear to be opened for traffic.
- On 6 December, a Mine Action team started assessing Mayom Junction – Mayom – Abiemnom road. The team moved approximately 12 km west of Mayom Junction towards Torabeid but progress was slow due to bad road conditions. During the assessment the team identified two sites which require verification of the absence of land mines and Explosive Remnants of War. The two sites will be cleared next week.
- In Malakal, Mine Action teams resumed Mine Risk Education inside the PoC sites.
- Mine Action teams were on standby, ready to assist food partners with clearing the feeder roads project as well as any other roads planned for rehabilitation. A meeting with food partners on road prioritization for countrywide access was held 9 December
- In Bor, Mine Action teams conducted an assessment of Bor town and found several Explosive Remnants of War which were immediately cleared

### Needs, gaps and constraints

- Mine Action teams are still facing challenges working in Jonglei, Unity, Upper Nile states due to insecurity and restrictions on movement. Weather constraints are also hampering operations but the teams continue to support the wider humanitarian community.



## Multi-sector response to refugees

### Response

- Training of 46 Police Officers was completed before they were deployed to Mingkaman, Lakes State.
- Best Interest Assessments (BIAs) were completed for 15 separated children (7 male, 8 female).
- The average attendance in the week at the five Child Friendly Spaces was 1,385 children.
- A one day training for 28 School Management Committee (SMC) members from Primary and Soba Secondary school was conducted. The objectives of the training was to ensure members have the skills and knowledge required to set up and manage the Parents-Teacher Association.
- The construction of Yei Girls Boarding Senior Secondary School was completed. The school currently has 10 classrooms and will have admission capacity of about 600 students.

### Needs, gaps and constraints

- Nothing to report.

## • Nutrition

### Response

- **Treatment of malnutrition from January-December 2014:** 78,196 boys and girls 6-59 months were admitted for treatment in Outpatient Therapeutic Programs (OTP) sites and stabilizing centers. 77,185 boys and girls (6-59 months) and 32,163 pregnant and lactating women (PLW) were admitted for treatment of moderate acute malnutrition in Targeted Supplementary Feeding Programs (TSFP).
- **Prevention of malnutrition conducted from January-December 2014:** 136,596 boys and girls 6-59 months and 28,986 PLWs were admitted to Blanket Supplementary Feeding Programs (BSFP). 197,890 caregivers received messages on Infant and Young Child feeding practices.
- **Nutrition Response in Bentiu Town:** Nutrition partners continued their response for internally displaced people and neighboring villages in Rubkona from Bentiu Town. OTP and TSFP services were provided inside Bentiu-town hospital and using mobile clinics for boys and girls under five.

- **Response to Warjok, Upper Nile:** Following the assessment conducted in Warjok where about 4,000 people were displaced, nutrition partners conducted screening for children under five and pregnant and lactating women. Proxy GAM rates were 1.3% and proxy MAM 6.52%. All acute malnourished children were referred to the mobile OTPs and the stabilizing center in Malakal PoC.
- Therapeutic feeding supplies delivery resumed to Unity and Lakes states.
- **Rapid/emergency response:** Nine emergency teams responding in Guit, Koch, Kodok, Nyal and Pariang counties in Unity State; Ayod and Twic East in Jonglei and one team was conducting surveillance in Leer, Mayendit in Unity state and Fashoda in Upper Nile state. Rapid Response teams responded in Turkei, Mayom County, Unity State where 948 children were screened.
- **Ongoing surveys and assessments:** SMART surveys in Uror, Jonglei State and Rapid Smart in Mayandit in Unity State, Budi, Ikwoto, Kapoeta East, and South in Central and Eastern Equatoria, Aweil East in Northern Bahr El Ghazal and Tonj East in Warrap State.

### Needs, gaps and constraints

- **Secured access and freedom of movement:** Secured access is required for condition assessment and continued routine and emergency service provision. Nutrition partners are expressing their interest to extend the nutrition services where acute needs exist (Nhiyaldu, Guit county- Unity state; Kaka and Manyo in Upper Nile); therefore, negotiating safe access is crucial.
- **Logistical constraints:** Shortages of therapeutic and supplementary supplies in some counties is due to logistical constraints (road access/flooding and insecurity). Negotiations with the logistics sector continued.
- **Nutrition expertise:** The nutrition sector continued to require additional qualified nutrition expertise among implementing partners, particularly in emergency/rapid response and the cluster coordination team to better coordinate and implement quality life-saving nutrition programs in emergency context.

## Protection

### Response

- **In Juba,** as part of the 16 Days of Activism against Gender Based Violence campaign, protection partners organized a three-day workshop with journalists on how to report on GBV especially sexual violence. The training was attended by 22 journalists.
- **In Mingkaman, Lakes State,** protection partners organized awareness activities with displaced and host communities with government authorities on the International Human Rights Day.
- Between 24 November and 8 December partners have noticed an increase in the number of people crossing into Uganda through the Nimule/Elegu border crossing. An average of 135 persons was crossing over every day compared to 12 persons a day in late October. Partners continue to monitor the cause of this movement.

### Needs, gaps and constraints

- Nothing to report.

## Shelter and Non-Food Items

### Response

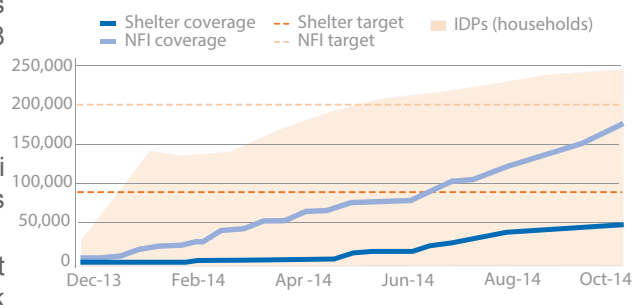
- **Central Equatoria:** The assessment of shelter and NFI needs completed, no response has been recommended as relocation is ongoing and shelter structures will not remain in the Topping site. In Juba PoC 3, erection of 90 transitional family tents for temporary occupation was completed. This will increase the capacity of camp management with the site to relocate and transition families, given the recent influx into Topping.
- **In Jonglei:** Pagil, registration of 3,051 families ahead of distribution of household materials was completed. A team was on the ground ready to provide assistance to 3,341 families. In Akobo town, distribution will commence to 2,515 families. Response is ongoing in Pultruk to 2,812 families.
- **In Lakes;** shelter construction is completed for 685 families in Mingkaman. A total of 8,185 shelters has constructed in the new site Mingkaman.
- **In Unity State,** an assessment and verification of new arrivals was completed in Koch with some 2,325 displaced families identified to be in need of assistance. In Bentiu, shelter construction and reinforcement was ongoing.



- In Upper Nile: Distribution to 808 vulnerable families was completed in Warjok and response was ongoing to 1,168 families in Renk and to some 2,000 families in Ulang.

### Needs, gaps and constraints

- Response to Kamel, Kaldak, Khorflus, Baliet and Turkei areas was put on hold due to insecurity and access challenges
- Assistance to Abeimnom in Unity to 882 families was put on hold due to difficult road conditions preventing stock movement from warehouses in Wau.

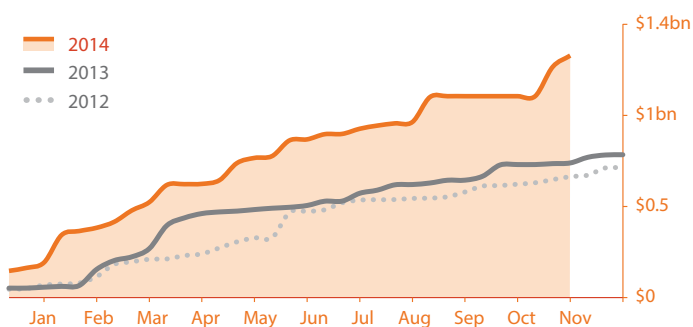


Source: Shelter/NFI cluster, Oct 2014

## Humanitarian Financing

### Call for resources to kick-start 2015

The aid operation needs to be sustained into 2015 to avoid further deterioration of the humanitarian situation. Of the \$1.8 billion required for 2015, some \$600 million is needed by February to reach more people, pre-position supplies and fix roads and airstrips. This will make the aid response more cost-effective. Donors have been generous to the South Sudan Crisis Response Plan, contributing nearly \$1.4 billion (75 per cent) of the \$1.8 billion total requirement for 2014. When the humanitarian contribution outside the Crisis Response Plan is included, the total funding for South Sudan crisis in 2014 has reached \$1.6 billion, almost \$1 billion more than the funding for 2013.



Funding to South Sudan appeals 2012-2014

### More contributions for CHF

This week Department for International Development (DFID) committed an additional amount of about \$21 million in humanitarian assistance, bringing DFID contribution to the Common Humanitarian Fund South Sudan to about \$95 million in 2014. This contribution will assist partners to scale up response and meet the needs of vulnerable people in the crisis affected states. To donate towards the South Sudan Response Plan, click the link: <http://tinyurl.com/k4659pt>

#### For further information or to provide feedback on this product, please contact:

Tapiwa Gomo, Head of Communication, [gomo@un.org](mailto:gomo@un.org), +211 922 406 079.

Websites: [www.unocha.org/south-sudan](http://www.unocha.org/south-sudan) | <http://southsudan.humanitarianresponse.info/> | Facebook UNOCHA South Sudan | Twitter @OCHA-SouthSudan