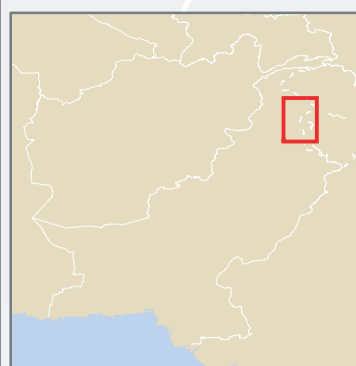


73°0'0"E

74°0'0"E

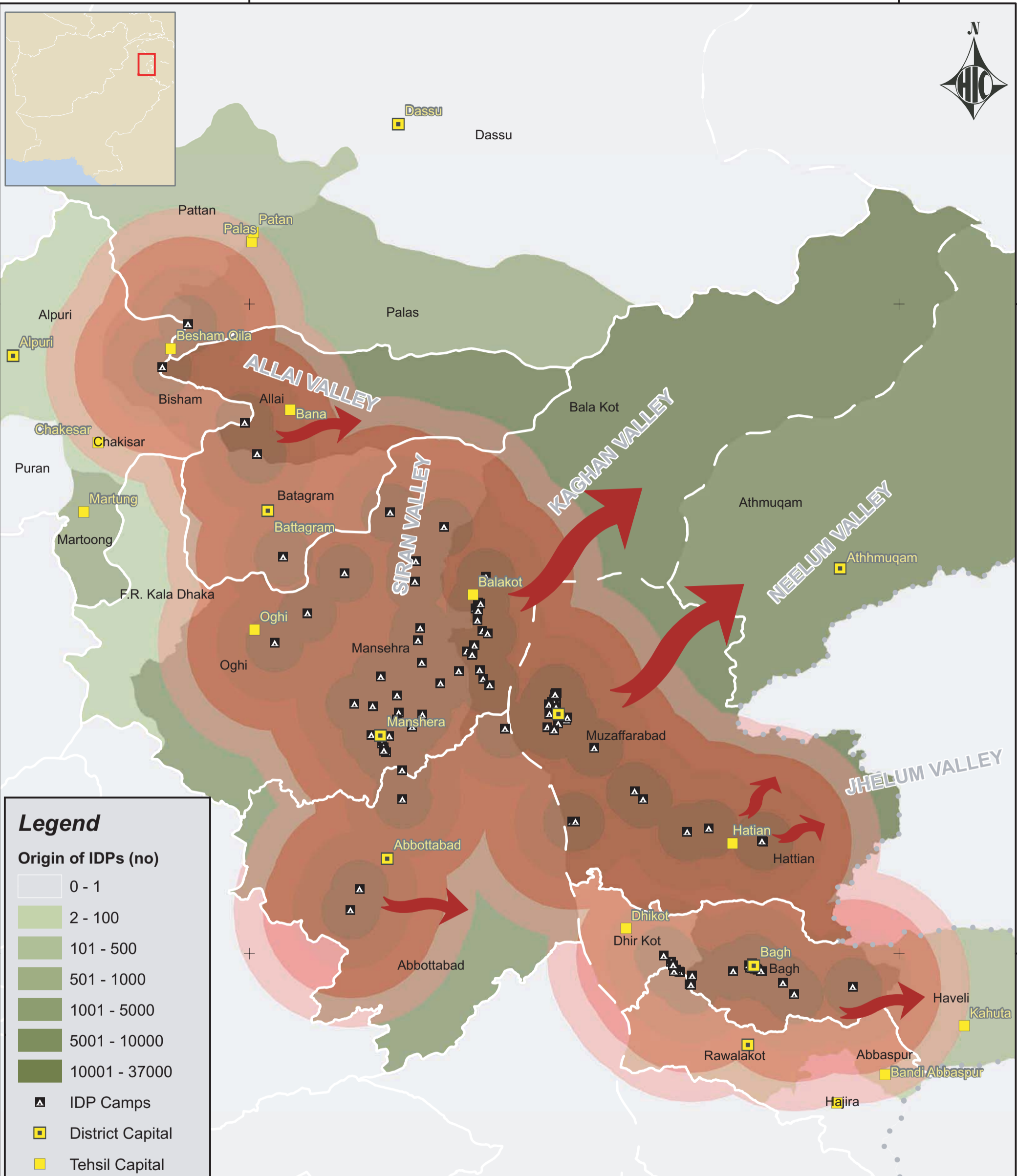


35°0'0"N

35°0'0"N

34°0'0"N

34°0'0"N




Legend

Origin of IDPs (no)

- 0 - 1
- 2 - 100
- 101 - 500
- 501 - 1000
- 1001 - 5000
- 5001 - 10000
- 10001 - 37000

- ▲ IDP Camps
- District Capital
- Tehsil Capital
- • • Line of Control
- Province
- District
- ➔ Potential Migration



HIC PAKISTAN
Emergency Response Centre

Potential Migration Intensity
Registration Data from UNHCR

0 2.5 5 10 15 20
Kilometers
Nominal Scale: 1:630,000 at A3



Date Created:	07-Mar-2006	Datum:	WGS84
HIC Map Num:	HIC-261-v01	GLIDE Num:	EQ-2005-000174-PAK

The boundaries and names and the designations used on this map do not imply official endorsement or acceptance by the United Nations.

Dotted line represents approximately the Line of Control in Jammu and Kashmir agreed upon by India and Pakistan. The final status of Jammu and Kashmir has not yet been agreed upon by the parties.

Note: Federal Administered Northern Areas (F.A.N.A), Federal Administered Tribal Areas (F.A.T.A), Pakistan Administered Kashmir (P.A.K)

Produced through the generous support of:

73°0'0"E

74°0'0"E