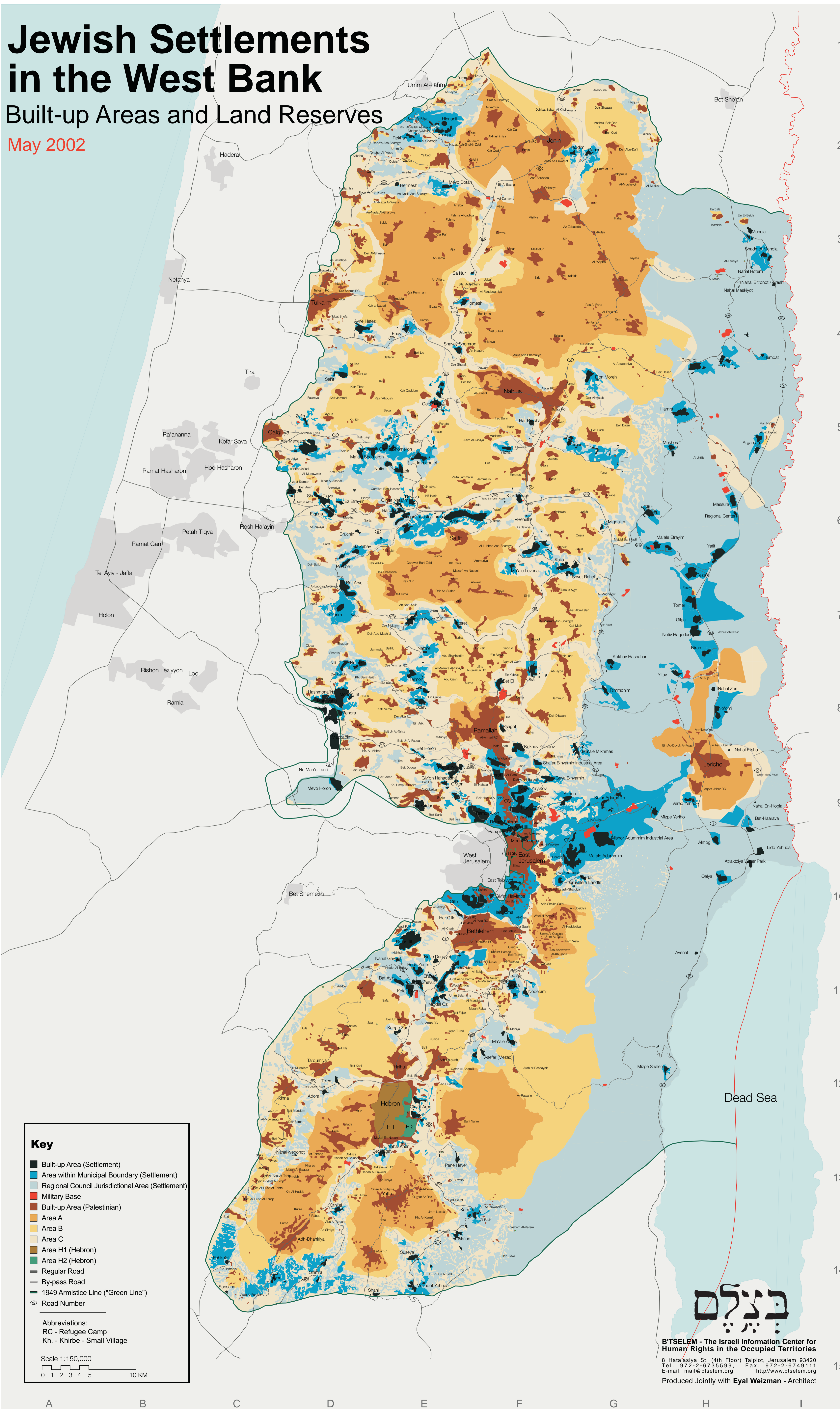


# Jewish Settlements in the West Bank

## Built-up Areas and Land Reserves

May 2002



**Key**

- Built-up Area (Settlement)
- Area within Municipal Boundary (Settlement)
- Regional Council Jurisdictional Area (Settlement)
- Military Base
- Built-up Area (Palestinian)
- Area A
- Area B
- Area C
- Area H1 (Hebron)
- Area H2 (Hebron)
- Regular Road
- By-pass Road
- 1949 Armistice Line ("Green Line")
- ⊙ Road Number

Abbreviations:  
 RC - Refugee Camp  
 Kh. - Khirbe - Small Village

Scale 1:150,000

0 1 2 3 4 5 10 KM

**בִּיטְלֵם**

**B'TSELEM - The Israeli Information Center for Human Rights in the Occupied Territories**  
 8 Hata'asiya St. (4th Floor) Talpote, Jerusalem 93420  
 Tel.: 972-2-6735599, Fax.: 972-2-6749111  
 E-mail: mail@btselem.org http://www.btselem.org  
 Produced Jointly with Eyal Weizman - Architect

A B C D E F G H I

1  
2  
3  
4  
5  
6  
7  
8  
9  
10  
11  
12  
13  
14  
15