

Akkar Governorate Informal Settlement Sweep Summary

For Humanitarian Use Only
Production Date: 07 August 2014

3rd Sweep: June 23rd - July 31st, 2014



310 Active Informal Settlements

12 Inactive IS in the past month

293 Less than 4 shelter settlements

4,488 Shelters

80 New shelters identified in the past month

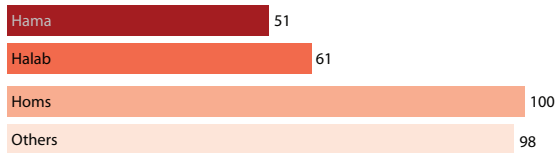
555 Shelters in < 4 settlements

25,057 Individuals

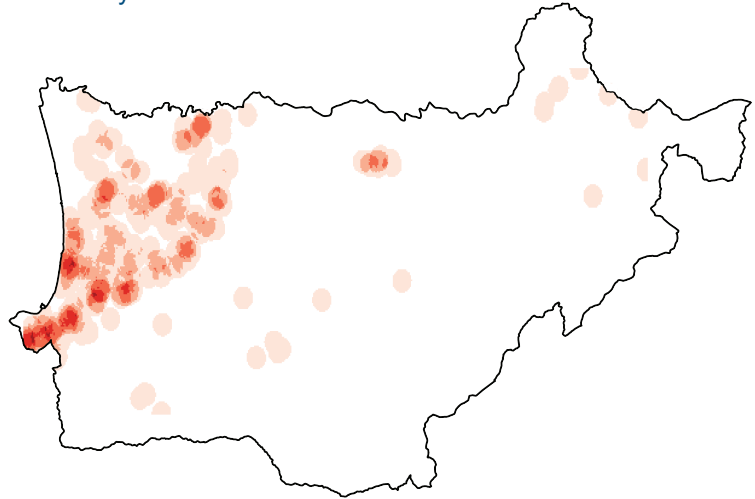
2,610 Total decrease of number of individuals in IS

3,684 Individuals in < 4 settlements

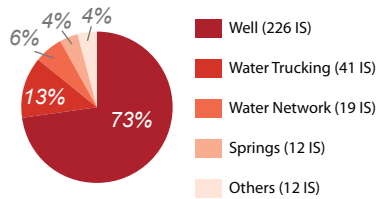
Places of Origin of Syrian Refugees



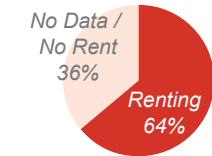
IS Density in Akkar



Water Sources in Informal Settlements

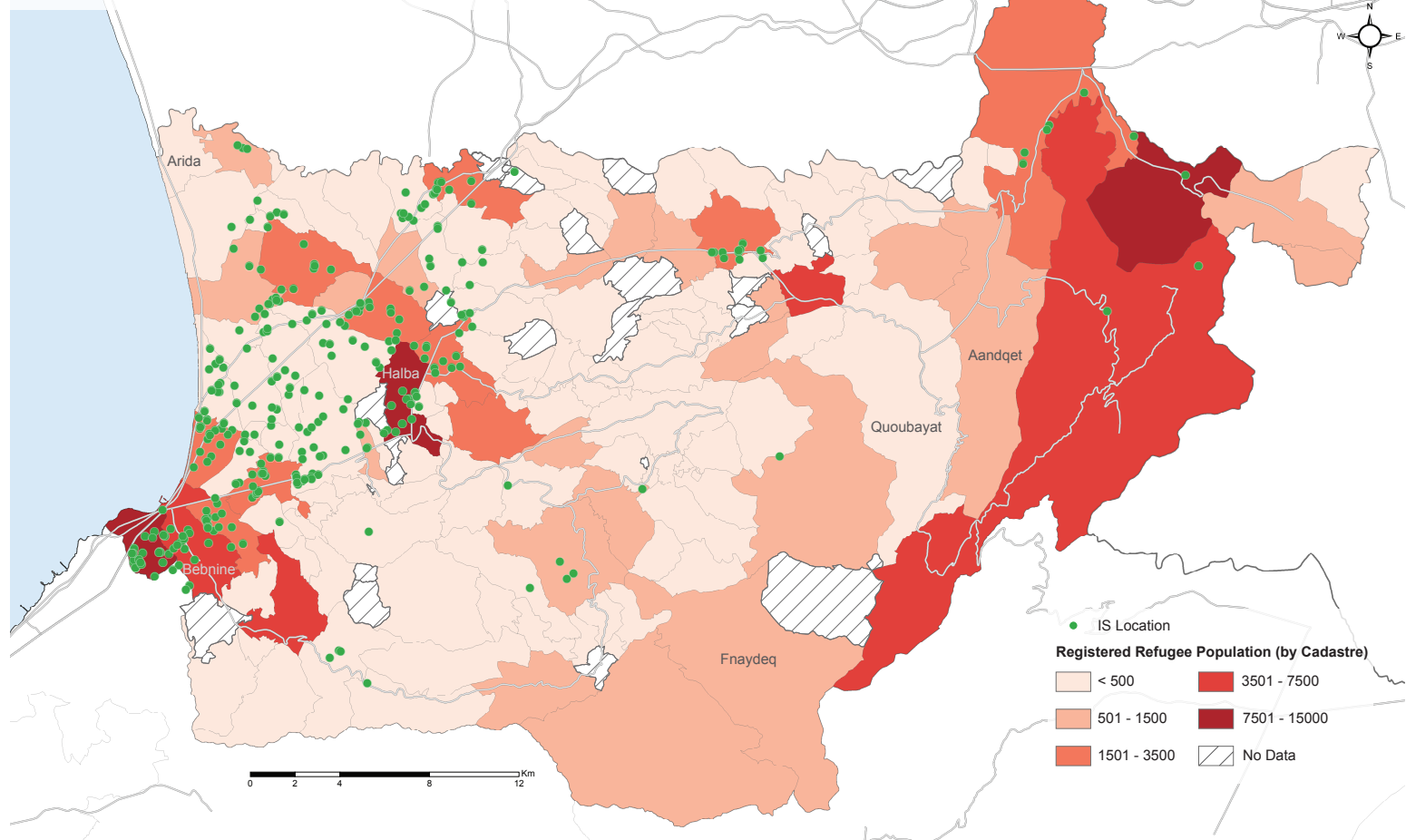


Refugee Renting* Lands



*Note: there were no specific questions concerning the data about basic needs and renting. The Shawish was given the freedom to add any comments/complaints at the end of the survey

Registered Syrian Refugees in Akkar and IS Locations



REACH began implementing the third sweep of IS on June 23, 2014. Using the geographic sweep approach agreed upon by Interagency Mapping Platform (IMAP) partners, REACH identified, geo-referenced, and collected key data on all IS in Akkar over a 6 week period. Data on IS in Akkar is updated on a continuous basis by REACH field teams who collect data on demographics, registration status, settlement leadership, landlords, date of establishment, rental costs, and place of origin.

Data on informal settlements is from the REACH IS Mapping Assessment (3rd Sweep) conducted between June and July 2014. Informal settlements (IS) are commonly established on either rented or unauthorized public or private land on the outskirts of population centers, and in many cases lack access to basic utilities and services. Shelters in informal settlements are predominately handmade with a combination of plastic sheeting, timber, and various other materials sourced by displaced persons.