

# INTER-AGENCY REGIONAL RESPONSE FOR SYRIAN REFUGEES

Egypt, Iraq, Jordan, Lebanon, Turkey

21 - 27 February 2014



This situation update provides a snapshot of the inter-agency regional humanitarian response in full coordination with host Governments and 156 partners across the region.

## REGIONAL HIGHLIGHTS

- UNHCR Special Envoy Angelina Jolie visited Lebanon during the reporting period to highlight the plight of Syrian children, and to thank the Lebanese people for assisting refugees as the conflict enters its fourth year. On her three-day visit, she met refugee families and held talks with President Michel Sleiman and Prime Minister Tammam Salam.

Throughout the visit, Ms. Jolie stressed the vital contribution that Lebanon is making as the recipient of the largest share of refugees from the crisis. With the number of registered refugees nearing the one million mark, Lebanon has the highest per capita concentration of refugees of any country in recent history.

- UNICEF, UNHCR, Mercy Corps, Save the Children and World Vision have issued [an appeal](#) to the general public, urging it to voice its outrage at the devastating impact on children and alarming long-term consequences of a lost generation as the conflict in Syria approaches its fourth year.

Nearly 5.5 million children are now affected inside Syria and in neighbouring countries. The five organizations warn that without an end to the relentless horror and suffering for children and without increased investment in their education and protection, an entire generation of Syrian children could be lost.

## IN THIS ISSUE

- Lebanon: Shelter remains pressing need as refugee numbers grow, p.2
- Turkey: numbers set to rise as Government scales up registration of out-of-camp refugees, p.3
- Jordan: humanitarian partners prepare for opening of Azraq camp as caravan transformation continues in Zaatari camp, p.3
- Refugee voices: A long walk from Syria, p.4

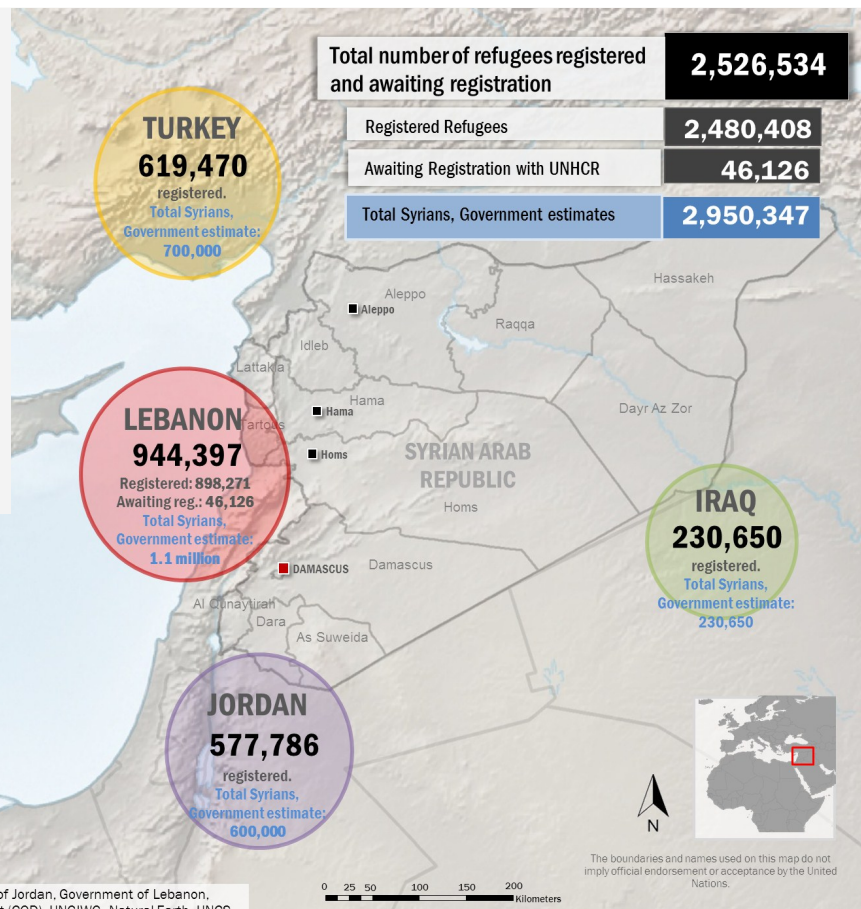
## REGIONAL FIGURES

**2.5 million** Syrian refugees have fled to neighbouring countries and North Africa

**84%** of refugees are living in urban and rural communities

**1.2 million** refugees are under 18 years of age

**14%** of the \$4.2 billion RRP6 inter-agency appeal is funded



Refugee population as of 27 February 2014, based on available data. For updated figures, please visit <http://data.unhcr.org/syrianrefugees>

## LEBANON: SHELTER REMAINS PRESSING NEED AS REFUGEE NUMBERS GROW

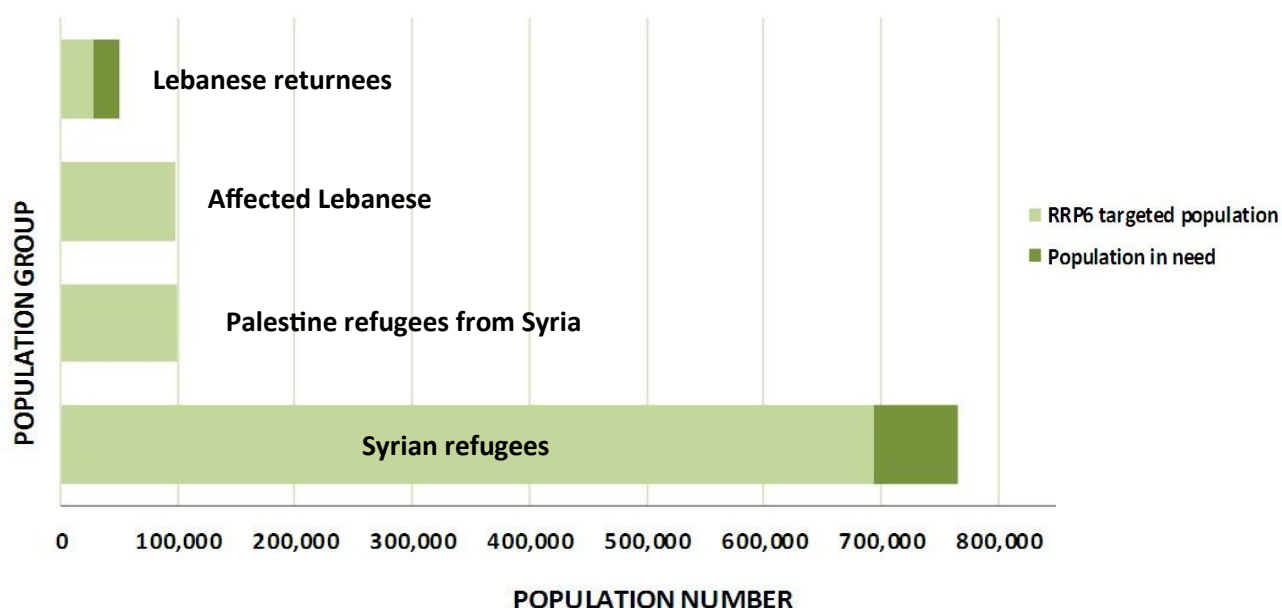
- As the refugee influx from Syria continues, the shelter absorption capacity in Lebanon is diminishing rapidly, particularly in areas of high refugee concentration.
- At the outset of the crisis many refugee households were able to find affordable shelter or host families to reside with. However, rental prices are on the rise and the capacity of host communities and relatives to provide shelter has reached the point of exhaustion. The number of buildings readily available for rehabilitation is dwindling.
- Since the onset of the crisis, humanitarian agencies in the Shelter Working Group have delivered assistance to 344,000 persons through interventions such as cash assistance for rent, weather-proofing, and rehabilitation of collective centres, unfinished buildings and temporary shelter settlements. In February 2014, over 31,800 refugees benefitted from various types of shelter support.



*A Syrian refugee with three of her children in the tented settlement where they are living in eastern Lebanon. UNHCR | A. McConnell*

- Given the increasingly limited shelter options available to refugees, the number of households in need of shelter assistance is expected to rise further. Refugees now resort to occupying sub-standard empty buildings or informal tented settlements.
- A survey conducted by UNHCR in August 2013 concluded that of the total number of registered refugees, around 67 per cent live in apartments or houses. Syrian families living in apartments are increasingly sharing with other families, resulting in overcrowding and increasing protection vulnerabilities and health hazards.
- As affordable shelter options fade, refugees are also turning to improvised shelters. There has been an increase in informal settlements, which now number around 430 located primarily in the Bekaa and northern regions. These settlements are often sub-standard, prone to flooding and risk of fire, and have limited or no sanitation facilities.
- The goal of the Shelter Working Group's strategy in 2014 will be to assist 920,000 persons of concern, including 694,000 Syrian refugees, 100,000 Palestine refugees from Syria, 28,000 Lebanese returnees and 98,000 members of host communities.
- Interventions will target: providing safe and dignified emergency shelter to newly arriving households; improving substandard shelters and maintaining the shelter conditions of vulnerable households; and upgrading properties belonging to Lebanese host families, thus enabling them to benefit from structural improvements in the long-term.

### LEBANON SHELTER INTERVENTIONS - RRP6 TARGETED POPULATIONS



## TURKEY: NUMBERS SET TO RISE AS GOVERNMENT SCALES UP REGISTRATION OF OUT-OF-CAMP REFUGEES

- According to information provided by the Turkish government, the number of registered non-camp Syrian refugees has exceeded 400,000 people, a 14 per cent increase since the end of 2013. There are now more than 620,000 Syrians registered in Turkey. The registration of non-camp Syrian refugees is being carried out in ten provinces, including provinces already hosting camp refugees and the province of Mersin.
- Recent registration activities for Syrians in urban areas reported across Turkey include:
  - Turkish non-governmental organization IMPR has registered some 6,000 households through its community centre in Sanliurfa. The centre has also been providing language support to Syrians as well as access to services and, in some cases, legal assistance through the Turkish Bar Association. IMPR is considering opening another community centre in Sanliurfa and is also looking into the possibility of working in the province of Mardin and in the town of Kiziltepe.
  - In the province of Mardin, the registration of non-camp Syrians has been ongoing in Midyat camp, while another registration centre dedicated to those in need of emergency medical assistance was opened in the city of Midyat.
  - In the province of Kilis, next to the Syrian border, the number of registered non-camp Syrians has reached 26,700, including those who have received temporary residence permits. This raises the total non-camp Syrian population living in Kilis to about 45,000 and, when combined with the Syrian population of the two camps in Kilis, Elbeyli and Ocunpinar, the total reaches 82,500 refugees. This is almost the equivalent of the local host population and highlights the burden that is being placed on local public facilities.
  - Some 24,500 non-camp Syrians have been registered by the local police in Kahramanmaras, with an estimated 200 Syrians being registered each day. Of these, more than 2,000 have reportedly received temporary residence permits. Local officials have additionally reported that the vast majority of non-camp Syrians living in Kahramanmaras are located in the city centre, while over 1,000 are living in surrounding towns. The Turkish Government provides Syrian refugees living in towns with transportation to the city centre for registration.

## JORDAN: HUMANITARIAN PARTNERS PREPARE FOR OPENING OF AZRAQ CAMP AS CARAVAN TRANSFORMATION CONTINUES IN ZAATARI CAMP

- **Zaatari camp:** Available shelter space in the camp is shrinking. This is the result of longer term residents extending the perimeter of their shelter plots and new arrivals setting up tents on land not intended to be used as shelter space. In turn, camp management is facing service-related challenges as well as public space constraints.
- Based on recent distribution figures, the Zaatari population stands at around 93,000 refugees. The distribution of pre-fabricated caravans is ongoing in Zaatari in cooperation with International Relief and Development (IRD) and the police. Up to 100 caravans are currently allocated every day; 20,420 caravans have been distributed to date in the camp and 1,063 tents remain in place, all of which are occupied by newly arrived families.
- **Preparations for Azraq camp opening:** UNHCR and partners are working to open Azraq by the end of March, with the date for receiving refugees to be decided in consultation with national authorities. As of 22 February, 1,089 family transitional shelters were completed and 964 were under construction.



*Thousands of caravans have been distributed in Zaatari camp, with only some 1,000 tents remaining. UNHCR | B. Sokol*



## REFUGEE VOICES: A LONG WALK FROM SYRIA

- Aisha\* left the city of Homs, Syria a year ago with her husband and her three children. She first sought refuge in Tall-ash-Shahm before crossing the border into Lebanon. *"We arrived in Saida [South Lebanon] during winter time. We didn't have warm clothes and had nowhere to sleep other than on the beach".*
- A generous Lebanese woman gave them some money to travel to Akkar [North Lebanon] where some of their relatives were already settled.
- In Halba, Aisha and her family were able to benefit from DRC's newcomers assistance program. They received food kits, mattresses, blankets, a kitchen set, a hygiene kit and baby kits. They then registered with UNHCR and were eligible to be housed in one of the 19 collective shelters rehabilitated by DRC and funded by UNHCR, where 2,500 individuals are currently residing.



Syrian refugees living in a collective shelter in Akkar, North Lebanon.  
DRC | F. Faivre

- Aisha now serves as a committee member elected by the residents of the shelter to resolve communal issues and raise concerns to DRC's Community Centre Management team.
- *"After this long journey from Syria, I am blessed to be safe with my loved ones and to help represent and support the community I'm living in at the shelter."*

\*name has been changed

The regional response for refugees fleeing Syria is the coordinated effort of 156 participating organizations, including 105 appealing agencies:

ABAAAD | [ACTED](#) | ActionAid | [Action contre la faim](#) | Adventist Development and Relief Agency | [Africa and Middle East Refugee Assistance](#) | Al Majmoua | [AMAN](#) | AMEL | [Arab Medical Union](#) | Arc en Ciel | [ARDD-Legal Aid](#) | Association de Charité Humanitaire | [Association Justice et Miséricorde](#) | Association of Volunteers in International Service | [BBC Media Action](#) | Beyond Association | [British Council](#) | CARE International | [Caritas](#) | Caritas Lebanon Migrant Center | [Catholic Relief Services](#) | Central Association for Kindergarten Supervisors League | [Centre for Victims of Torture](#) | Civil Development Organization | [Comitato Internazionale per lo Sviluppo dei Popoli](#) | CONCERN | [Cooperazione Internazionale](#) | Coptic Evangelical Organization for Social Services | [DRC](#) | Family Guidance and Awareness Center | [FAO](#) | Finn Church Aid | [Finnish Red Cross/Iraqi Red Crescent Society](#) | French Red Cross | [Fundacion Promocion Social de la Cultura](#) | GIZ | [Global Communities Partners for Good](#) | Gruppo di Volontariato Civile | [Handicap International](#) | Heartland Alliance International | [High Relief Commission](#) | Hilfswerk Austria International | [Human Relief Foundation](#) | Humedica | [ILO](#) | Institution for Family Health/Noor Al Hussein Foundation | [International Alert](#) | International Catholic Migration Commission | [International Children's Continence Society](#) | International Medical Corps | [International Orthodox Christian Charities](#) | International Relief and Development | [International Rescue Committee](#) | Internews | [INTERSOS](#) | IOM | [Iraqi Refugee Assistance Project](#) | Iraqi Youth League | [Islamic Relief Worldwide](#) | JBA | [JEN](#) | Jesuit Refugee Service | [Jordan Health Aid Society](#) | Jordan Hashemite Charity Organization | [Jordan Hashemite Fund for Human Development](#) | Jordan Red Crescent | [Jordan River Foundation](#) | Jordanian Women's Union | [KAFA](#) | KG | [KnK](#) | KURDS | [Lutheran Word Federation](#) | MADA | [Madrasati Initiative](#) | Mines Advisory Group | [Mahmoud Mosque Society](#) | Makassed | [Makhzoumi Foundation](#) | Medair | [Medical Aid for Palestinians](#) | Médecins du Monde | [Mercy Corps](#) | Mercy USA | [Ministry of Public Health](#) | Ministry of Water and Irrigation | [Movement for Peace](#) | Muslim Aid | [NAJMAH](#) | National Center for Culture and Arts | [NICCOD](#) | NRC | [Operation Mercy](#) | Organization for the Development of Women and Children | [Oxfam](#) | PEOPLE IN NEED | [Plan International](#) | Polish Center for International Aid | [Psycho Social Training and Services Institute in Cairo](#) | PU-AMI | [Public Aid Organization](#) | QANDIL | [Questscope](#) | Rassemblement Democratique des Femmes du Liban | [Relief International](#) | Refugee Education Trust | [Refugee Egypt](#) | Resala | [RESCATE](#) | RESTART | [Royal Health Awareness Society](#) | Safadi Foundation | [SAWA](#) | SCI KR-I | [SCI](#) | SCJ | [Search for Common Ground](#) | Secours Islamique France | [Seraphim GLOBAL](#) | SHEILD | [Solidar Suisse](#) | Solidarités International | [Soins infirmiers et développement communautaire](#) | St. Andrew's Refugee Education Service | [STEP](#) | TADAMON | [Taghyeer](#) | TDH | [TDHI](#) | THW | [TRIANGLE GH](#) | UAE Red Crescent | [UNAMI](#) | UN Women | [UNDP](#) | UNESCO | [UNFPA](#) | UN-Habitat | [UNHCR](#) | UNICEF | [UNOPS](#) | Un Ponte Per | [UNRWA](#) | WAAJC | [War Child UK](#) | War Child Holland | [WARVIN](#) | WFP | [WHO](#) | World Rehabilitation Fund | [World Vision International](#) | Young Man's Christian Association | [Y-PEER](#)

Humanitarian response partners are invited to contribute to this report. For more information or to be added to the distribution list, please contact [Anna King](#), UNHCR Regional Reporting Officer | [kinga@unhcr.org](mailto:kinga@unhcr.org)