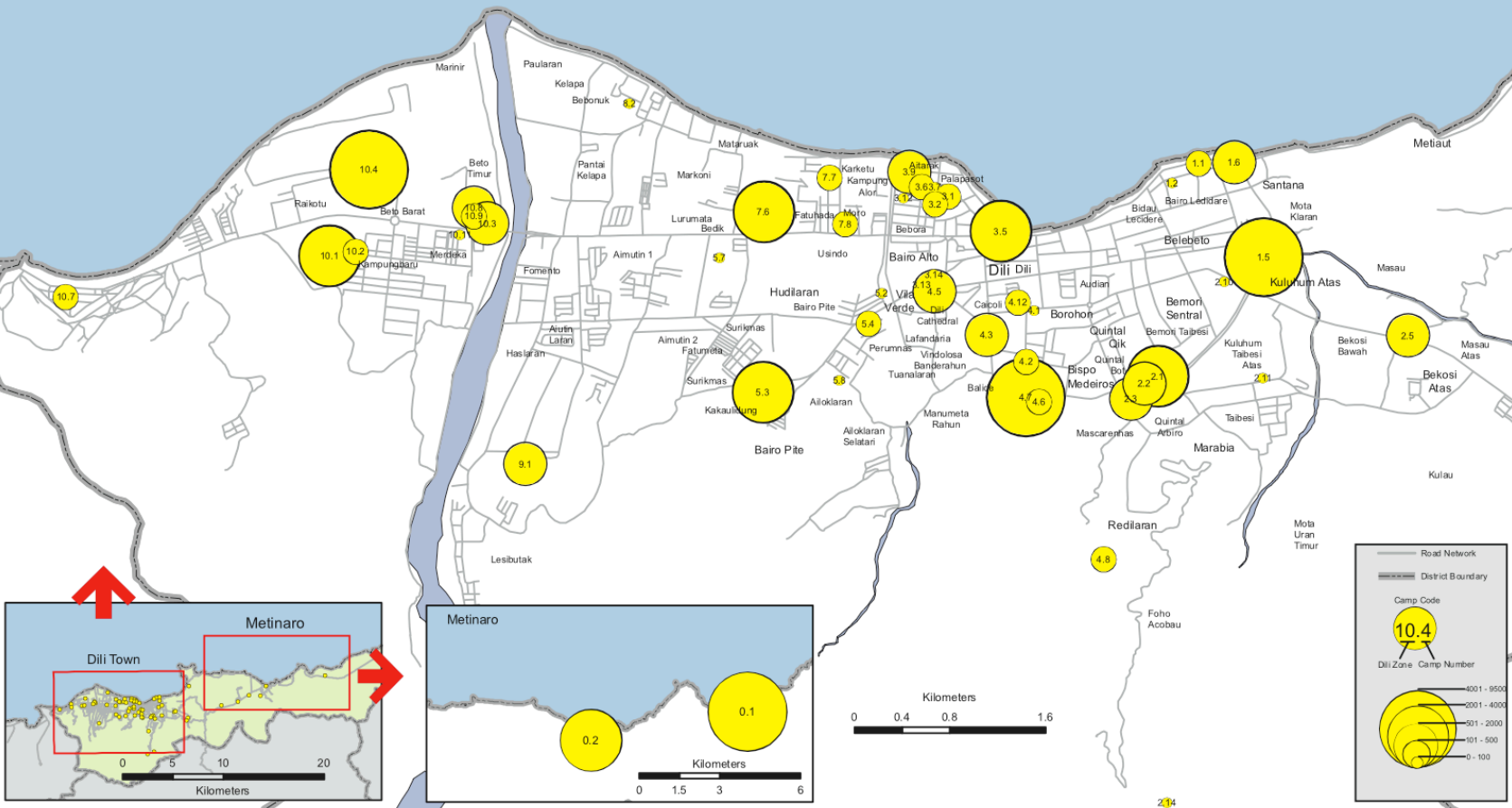


# Indication of IDP Camp Populations in Dili, Based on September 2007 Food Aid Recipients



Estimated Total Number of IDPs in Timor-Leste	: 100,000
Minimum Estimated Number of IDPs in Dili	: 30,000
Caseload of Food Aid Recipients in Dili	: 69,000
Number of Camps in Dili	: 53

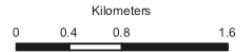
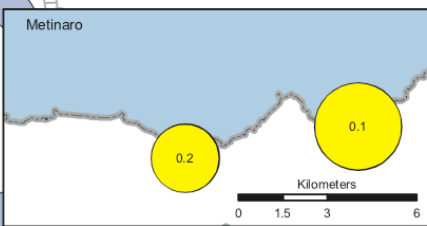
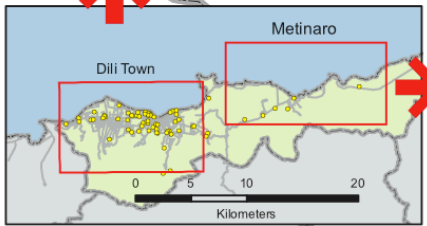


Legend:

- Road Network
- District Boundary
- Camp Code
- Dili Zone - Camp Number

Scale: 0 - 1000 (Camp Number)

Scale: 0 - 6 (Kilometers)



Sources: IDP figures from existing camp management structures based on Sep 07 food recipients.

The boundaries and names shown and the designations used do not imply official endorsement or acceptance by the United Nations

Cartography: OCHA, Timor Leste, October 2007. WGS84, A4 Map Ref\_OCHA-TL-117-009