

# SUDAN: White Nile State

## Refugee sites hosting new arrivals from South Sudan

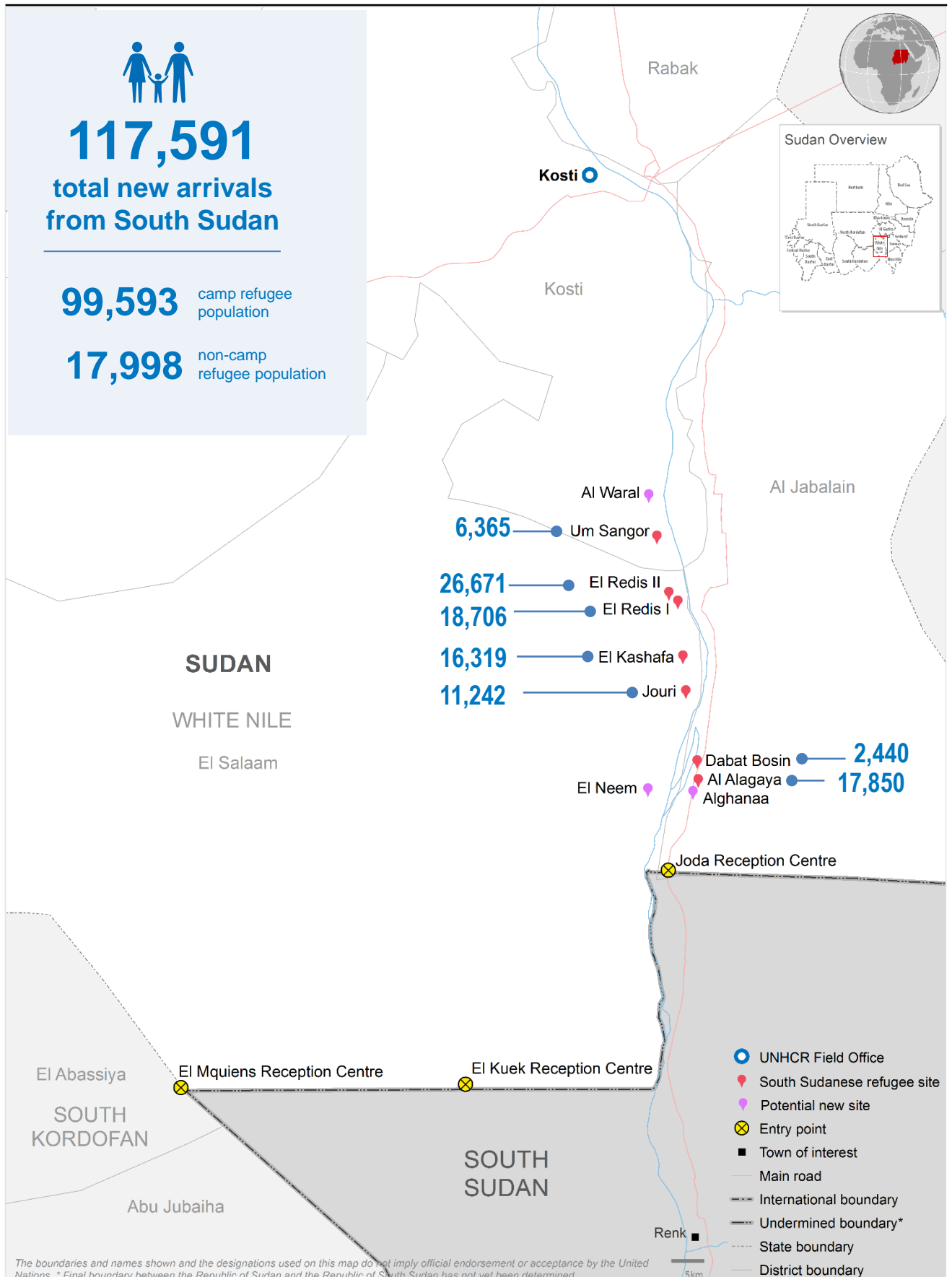
13 January- 1 February 2016



**117,591**  
total new arrivals  
from South Sudan

**99,593** camp refugee population

**17,998** non-camp refugee population



The boundaries and names shown and the designations used on this map do not imply official endorsement or acceptance by the United Nations. \* Final boundary between the Republic of Sudan and the Republic of South Sudan has not yet been determined.