

SYRIA REGIONAL REFUGEE RESPONSE

Jordan, Lebanon, Iraq, Turkey



10 August 2012

This weekly update provides a snapshot of the United Nations and partners' response to the influx of Syrian refugees into Jordan, Lebanon, Iraq and Turkey. The response is led by the UN Refugee Agency and is undertaken in full coordination with host Governments, UN agencies, and NGO partners. This report covers the period from 3 to 10 August 2012. The next update will be issued on 17 August 2012.



Domiz Camp in Iraq ©UNHCR/2012

GENERAL HIGHLIGHTS

- The Syrian refugee population in Jordan, Lebanon, Iraq and Turkey is steadily growing. The total number of Syrian refugees has so far reached **146,667**. This shows an increase of some 15,018 persons since last week.
- According to the Turkish authorities, the number of daily arrivals has increased with an average of almost 1,000 persons per day. This week only, more than 6,000 new arrivals have been recorded.

REFUGEE NUMBERS

Number of Syrian Refugees	JORDAN**	LEBANON	IRAQ	TURKEY	TOTAL
Registered	41,631	35,141	12,441	50,227	139,440
Awaiting registration*	4,238	1700	1,289	-	7,224
TOTAL	45,869	36,841	13,730	50,227	146,667

**Figures are based on estimates and thus may vary.*

***Some 50,000 have been identified by local organizations as in need of assistance, some of whom have been registered by UNHCR. According to the Government of Jordan, there are more than 150,000 Syrians in Jordan.*

JORDAN

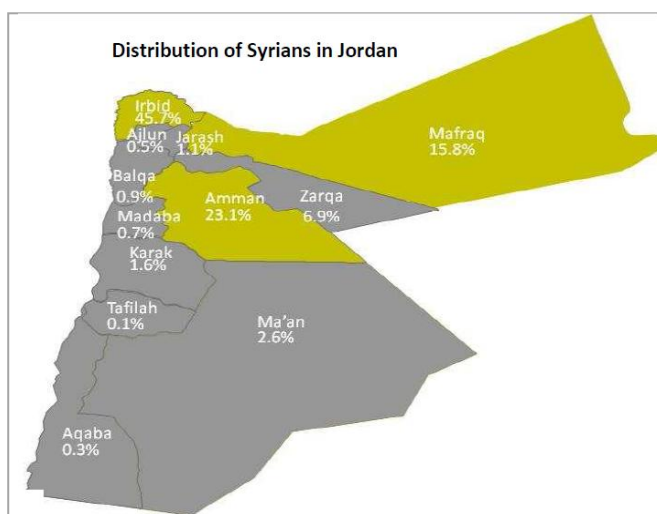
HIGHLIGHTS

- The number of refugees who are registered or in the process of being registered has now reached 45,869, with 3,891 of them having arrived in August only. Many thousands of the Syrians in Jordan have not registered yet, whereas UNHCR and partners are working to assist them.

Protection / Numbers

- Registration:

- o Some 41,631 Syrian refugees have been registered with UNHCR while another 4,238 are pending registration. This shows an increase of some 4,143 since last week, including a steady increase in those coming from Damascus, Hama and Aleppo.
- o 45.83% of those who registered in Amman are from Dara'a, 29.49% from Homs, 11.00% from Damascus, 5.35% from Hama, 3.21% from Aleppo, and the rest come from various other cities in Syria.



- o UNHCR is also providing registration on site at the newly established Za'atri camp and ensures that vulnerable Syrians receive appropriate counseling and follow up as needed.

- New Arrivals: 5,723 new arrivals entered the country during the reporting period. With the support of IOM and the Jordanian Armed Forces, all new arrivals are being transferred from the border and transit sites to Za'atri camp, which is currently hosting 4,414 Syrian refugees.

Assistance / Outreach

- Health: The health clinic in Za'atri camp is now fully operational with the support of UNHCR and the Jordanian Health Aid Society (JHAS). In addition, a Moroccan field hospital is also established and a roving health team is conducting outreach throughout the camp. At the JHAS reproductive health clinic, supported by UNFPA, a gynecologist and a midwife have started delivering reproductive health services.
- Food: While WFP continues to distribute hot Ramadan meals in Za'atri camp and the Ramtha transit centers, UNHCR is providing supplementary food for those non-fasting, including children and ill.
- Education: The Ministry of Education agreed for the refugee children at Za'atri camp and transit facilities to attend public schools in Mafraq and Ramtha in the upcoming school year. There are currently around 1,000 school-aged children in the camp who are offered recreational and psychosocial activities run by UNICEF's partner Save the Children International. UNICEF/Mercy Corps also installed a playground in the camp.

LEBANON

HIGHLIGHTS

- UNHCR will introduce centralized registration in Tripoli with the potential of registering up to 700 individuals daily.

Protection / Numbers

- Registration: A total number of 35,141 Syrian refugees are now registered, while it is estimated that another 1,700 are awaiting registration. Information campaigns in border villages continue to encourage newly arrived families in need of protection or assistance to come forward and register.
- New arrivals: Newly arrived Syrians mainly come from Damascus, Homs, Aleppo and Dara'a. They are largely staying with friends or relatives in Beirut, Tripoli and Saida, or in the Bekaa, pending employment opportunities. Many newcomers are returning to Syria due to high living costs and accommodation challenges in Lebanon.



@UNHCR/2012

Assistance / Outreach

- Shelter: The Norwegian Refugee Council (NRC) continues to support local hosting communities in the North through minor rehabilitation of their homes. NRC is also providing shelter toolkits and began rehabilitating three large collective shelters in Aarsal and Al-Fakeha which will have the capacity to host 220 people (44 families).
- Health: In light of the High Relief Commission's decision to stop covering the costs of secondary health care, IMC and UNHCR continue to look at alternative ways to cover this gap. Cases requiring secondary health care are being referred to IMC who remain the focal point for hospital admissions. IMC referred 20 cases requiring lifesaving treatment and three injured cases to the Qatari Red Crescent (QRC) who supported their treatment. Unregistered cases are referred to the Coalition of Charities' NGOs operating in the North.
- Education: Up to 2,000 Syrian and Lebanese children are taking part in the UNICEF summer camps, including at least 100 children from the most recent influx of Syrians to the Beka'a. UNICEF is also supporting a network of 20 Child Friendly Spaces, the majority of which are school-based, targeting over 5,000 children and caregivers. Finally, UNHCR, DRC, UNICEF, ACF and Save the Children continued a collaborative effort of mapping and assessing public schools in the Bekaa in preparation for new arrivals.

- Aid Distribution: Centralized distribution in north Lebanon resumed following the arrival of WFP food kits. UNHCR, WFP, and the Danish Refugee Council, with the assistance of Muslim Aid, facilitated the distribution of food, hygiene and baby kits, while UNFPA provided sanitary napkins. In the meantime, Islamic Relief has been supporting 478 host families in Wadi Khaled and Akkar.

IRAQ

HIGHLIGHTS

- Syrian refugees continue to enter Iraq mostly through Al-Qaim border point. The total number of Syrian refugees has so far reached **13,730**, which shows an increase of some 1,265 since last week.

Protection / Numbers

- Registration:
 - o So far, 12,441 Syrian refugees have been registered with UNHCR or the Iraqi Government. In the Kurdish Regional Governorate, the total number of registered Syrians has reached 9,773 which constitutes the total population in that area.
 - o At Al-Qaim border point, the total number of registered Syrian refugees has reached 2,930 out of a total of 3,957 individuals in that area.
- New Arrivals: Most of the arrivals during the reporting period have been in the Kurdistan region (720 people) although 596 refugees were recorded further south in the Al-Qaim area.
- Iraqi Returnees: The total number of Iraqi returnees from Syria has so far reached 23,700 since July 18, including 5,222 returnees by air.

Assistance / Outreach

- Shelter: So far 385 tents have been erected in the new camp of Al-Qaim, where the refugees, presently in a school, will be relocated if they have no opportunity to be hosted by the community. A further camp is expected to be established near Rabia in Al-Kasis. The Domiz camp, hosting some 2,080 Syrian refugees, is also being expanded.



The New Camp of Al-Qaim © UNHCR/2012

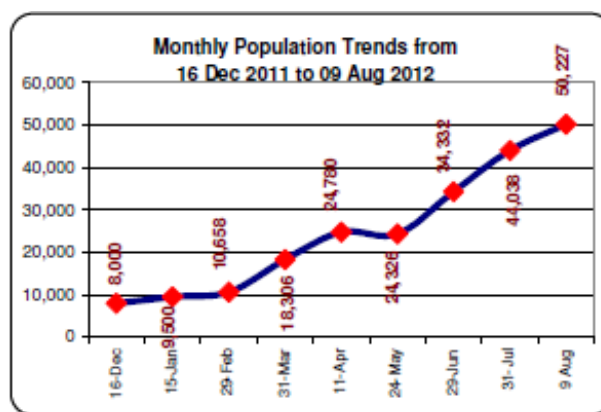
TURKEY

HIGHLIGHTS

- The total refugee population has now exceeded 50,000 people (50,227) with more than 6,000 new arrivals recorded this week only.
- On 6 August, the Turkish government opened a new camp at Akcakale. It has also announced its intention to double overall reception capacity from the current 50,000 people to 100,000.

Protection / Numbers

- Registration: 50,227 are currently hosted in 8 camps in the border provinces of Hatay (10,666), Gaziantep (7,754), Kilis (12,033) and Sanliurfa (17,540). Many are from Aleppo and surrounding villages, while others are from Idlib and Latakia. Women and children make up more than 92% of the total population.
- New arrivals:
 - o According to government authorities, the number of daily arrivals has increased with an average daily arrival of almost 1,000 persons.
 - o While there is an increase in the trend of new arrivals, the trend of voluntary return also continues. During the month of July, more than 8,000 persons voluntarily returned to their villages, mainly in Idlib region.
 - o Since it was opened on 6 August, Akcakale camp has received over 5,600 Syrian refugees in four days only. Reportedly, the referrals of the new arrivals into the camp has been suspended as the construction in the camp is still ongoing.



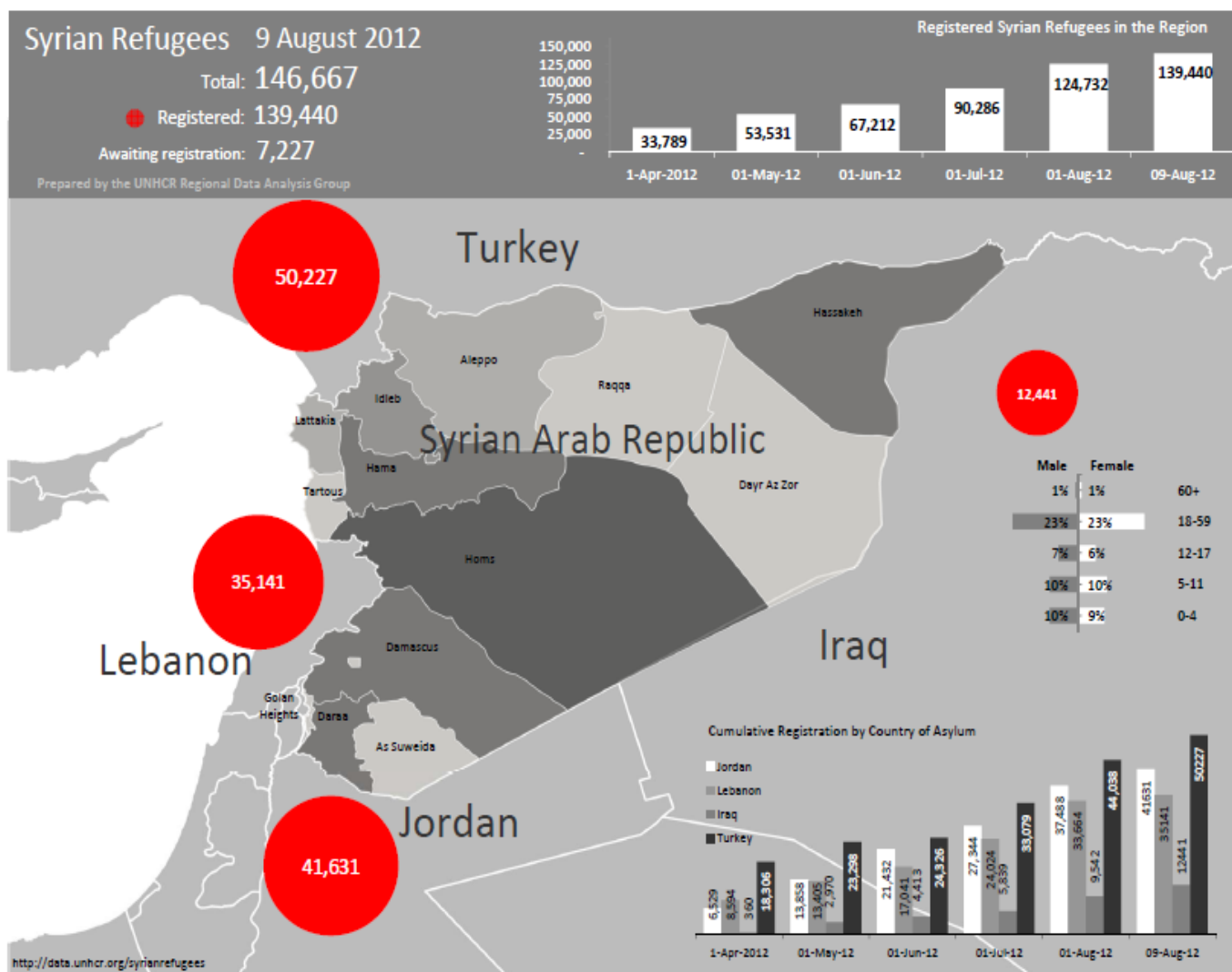
Assistance / Outreach

- Food Assistance: Following their technical assessment, WFP and the Government are working out the modalities to implement a food voucher program for Syrian refugees. In the meantime, the Turkish Government continues to provide adequate food assistance for Syrians registered in camps.

FUNDING UPDATES

- On 28 June the revised Regional Response Plan for Syrian refugees was launched by 7 UN agencies and 36 NGO partners, jointly appealing for USD 193 million to help Syrian refugees in Jordan, Lebanon, Iraq, and Turkey. So far the appeal has been funded for USD **64.3 million** or 33% of the total needs.

OVERVIEW MAP



For queries, please contact:

Ms. **Eveline Wolfcarius**, UNHCR – Geneva, wolfcari@unhcr.org, or

Ms. **Salma Murid Al-Kudwah**, UNHCR – Geneva, alkudwah@unhcr.org