



WEST BANK MOVEMENT AND ACCESS UPDATE

JUNE 2009

1. In the course of the past month the Israeli authorities have implemented several steps that have further eased the flow of Palestinian traffic to and from four West Bank cities: Nablus, Qalqiliya, Ramallah and Jericho. Initial field observations indicate that these measures have significantly reduced the amount of time required for Palestinians to access these cities.

Nablus City

One of the seven checkpoints controlling access into the city ('Asira Ash Shamaliya) is no longer staffed on a permanent basis and part of its infrastructure was removed; yet, two road gates (currently open) adjacent to the checkpoint remained in place and soldiers performed ad-hoc checks at them. While the other six checkpoints around the city remain intact, the permit requirements for vehicles leaving the city, previously implemented on some of these checkpoints, were lifted. In addition, checks are performed only on a random basis and the opening hours were extended.

Qalqiliya

Of the two checkpoints controlling access into the city from the south and from the east, one was completely dismantled ('Izbat Jal'ud checkpoint) and the other (DCO checkpoint) ceased to be permanently staffed, while keeping the infrastructure in place. Since the implementation of the latter, IDF soldiers have occasionally manned the checkpoint without interrupting the flow of traffic.

Ramallah

The main checkpoint controlling the northern access route into the city ('Atara checkpoint) ceased to be permanently staffed but most of the checkpoint's infrastructure remained in place. Since then, random vehicle checks by IDF soldiers were reported at the checkpoint

for several hours every week. No change has been implemented on the checkpoints controlling access into Ramallah from the south (Qalandiya and Jab'a), the east (Beit El), and the west (Beituniya for goods only).

Jericho

The main checkpoint controlling the southern access route into the city (DCO checkpoint) ceased to be permanently staffed and most of its infrastructure was removed. No change has been observed at the two checkpoints controlling access from the north and the east.

2. The above measures take place alongside a process of entrenchment of some of the mechanisms used to control and restrict Palestinian movement. This process, which was elaborated in the latest Movement and Access Update issued by OCHA in May 2009, includes, among other elements, the expansion of the alternative ("fabric of life") road network and of key permanently staffed checkpoints. While in some cases these measures have eased access, they exact a price from Palestinians in terms of land loss, disruption of traditional routes, and deepening fragmentation of West Bank territory. As a result, they have also contributed to the shrinkage of West Bank land and space available for Palestinian use and development.
3. To date, following the latest changes, there are a total of 613 closure obstacles within the West Bank territory (excluding checkpoints located on the Green Line), which obstruct the internal movement of Palestinians, including access into East Jerusalem. Despite some definitional differences, this figure has been confirmed by the IDF Central Command and OCHA, following detailed crosschecking and a series of joint field trips.

4. Out of the 613 closure obstacles, 68 are permanently staffed checkpoints (five fewer than one month ago). Thirty-eight (38) of these permanently staffed checkpoints are located on West Bank roads, which eventually lead to East Jerusalem and Israel, most of them along the Barrier. The Israeli authorities use these checkpoints to prevent Palestinian access into East Jerusalem and Israel without permits. The location of these checkpoints inside the West Bank, however, blocks Palestinian access to communities and land on the other side of the checkpoint. In addition, there are 522 unstaffed obstacles (19 fewer than one month ago), which include roadblocks, earthmounds, earth walls, road barriers, road gates and trenches, and 23 “partial checkpoints”, which are points of control staffed on an ad-hoc basis.
5. Not included in the 613 figure, but equally important are 84 obstacles blocking Palestinian access and movement within the Israeli controlled area of Hebron City (H2), 63 crossing points along the Barrier, also known as “Barrier gates” which control Palestinian movement into West Bank areas on the west side of the Barrier, and an average of 70 random (“flying”) checkpoints deployed every week since the beginning of 2009.
6. The closure obstacles constitute only one of several layers of a complex system of access restrictions applicable to Palestinians, which include, inter alia, restrictions on the use of main roads, the Barrier and its permit regime, closed military zones and nature reserves, and Israeli settlements and adjacent “buffer zones”.



West Bank Checkpoints

June 2009

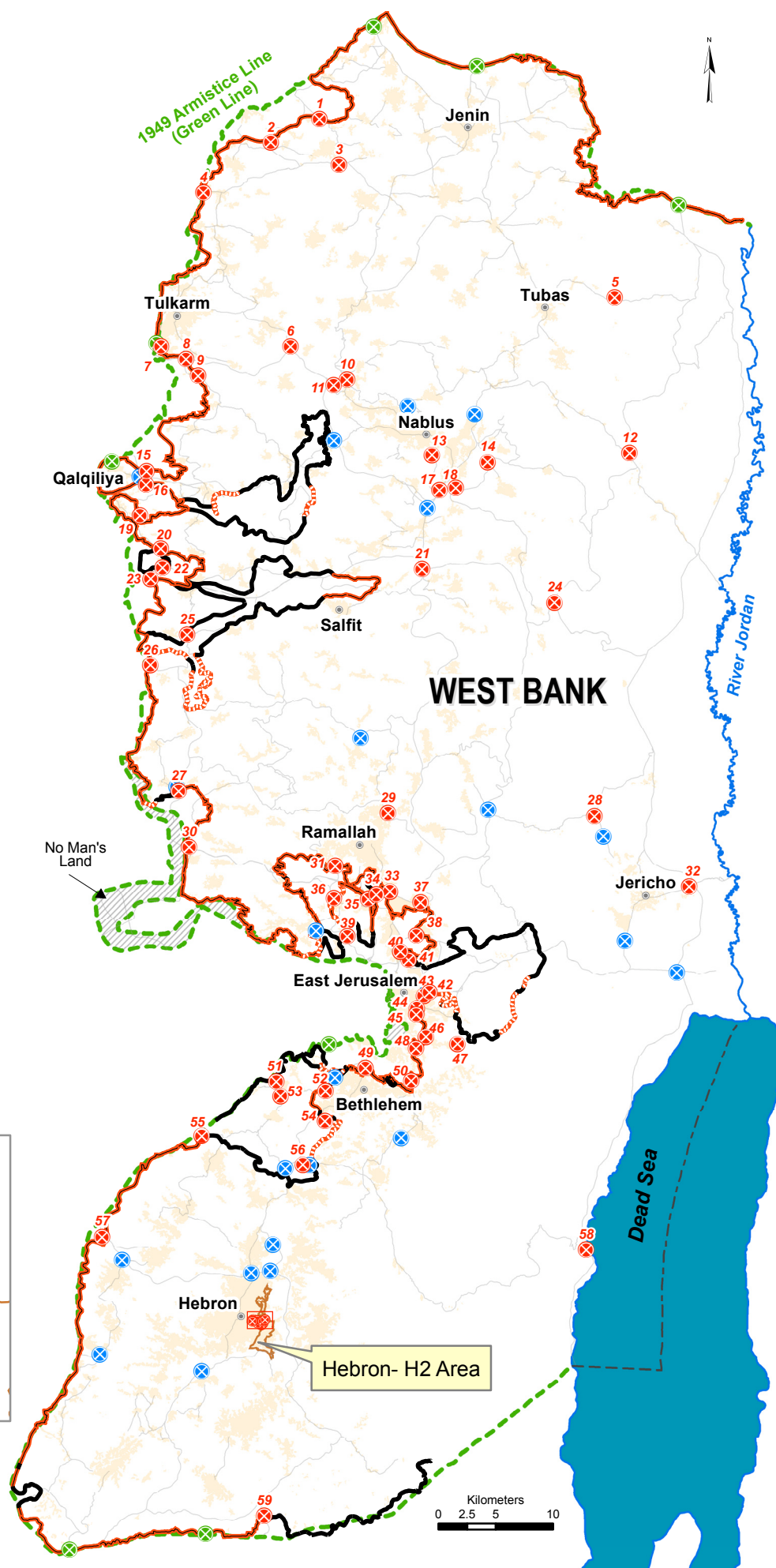
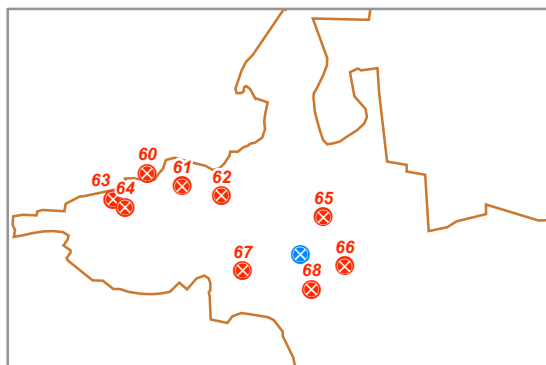
Legend :

- Checkpoint
- Partial Checkpoint
- Checkpoint on the Green Line
- Constructed Barrier
- Under construction
- Planned Barrier
- International Border
- 1949 Armistice Line (Green Line)
- Palestinian built-up area

United Nations Office for the Coordination of Humanitarian Affairs

Cartography: OCHA-oPt - June 2009. Base data: PA MoP, July 2000 - OCHA update 08. For comments contact <ochaopt@un.org> or Tel. +972 (02) 582-9962 <http://www.ochaopt.org>

Hebron - H2 , Old City



West Bank Checkpoints , June 2009

NUMBER	CHECKPOINT NAME
1	Tura
2	Reikhan Barta'a
3	Ya'bad Mevo Dotan
4	Nazlat 'Isa South
5	Tayasir
6	Enav
7	Ephraim
8	Kafriat
9	Jubarah
10	Shave Shomeron
11	New Beit Iba / West Shave Shomron
12	Hamra
13	At Tur
14	Beit Furik
15	Zufin
16	Jaljoulia
17	Huwwara
18	'Awarta commercial
19	Ras 'Atiya
20	Azzun Atma
21	Tappuah
22	azzun atme 2
23	Kafr Kasem
24	Ma'ale Efrayim
25	Deir Ballut
26	Rantis
27	Nilin
28	Yitav
29	Bet El DCO
30	Makkabim
31	Beituniya
32	Jericho
33	Qalandiya
34	Qawasmi

NUMBER	CHECKPOINT NAME
35	Atarot
36	Al Jib
37	Jaba'
38	Hizmah
39	Ramot
40	Shufat road
41	Shufat Camp
42	Zayem
43	Zaytoun
44	Lazarus
45	Surkhi Qunbar
46	As Sawahira ash Shariqiya
47	Wadi Nar
48	Sheikh Sa'd
49	Gilo
50	An Nu'man
51	Wadi Fukin
52	Tunnels
53	Betar Illit
54	Efrat
55	Al Jab'a
56	Efrat settlement entrance
57	Tarqumiya
58	Mizpe Shalem
59	Beit Yatir
60	checkpoint 56 al shuhada st.
61	Beit Hadasa cp
62	Beit Romano
63	Tel Rumeida checkpoint
64	Tel Rumeida checkpoint 2
65	checkpoint near border police station near tikyyat
66	Salayma-police c
67	checkpoint 209
68	Abu Rish



UNITED NATIONS
Office for the Coordination of Humanitarian Affairs
occupied Palestinian territory

P. O. Box 38712
East Jerusalem 91386
www.ochaopt.org

Tel. +972 (0)2 582 9962
Fax +972 (0)2 582 5841
ochaopt@un.org