

Europe: Resettlement and Other Forms of Admission of Syrian Refugees - February 2015

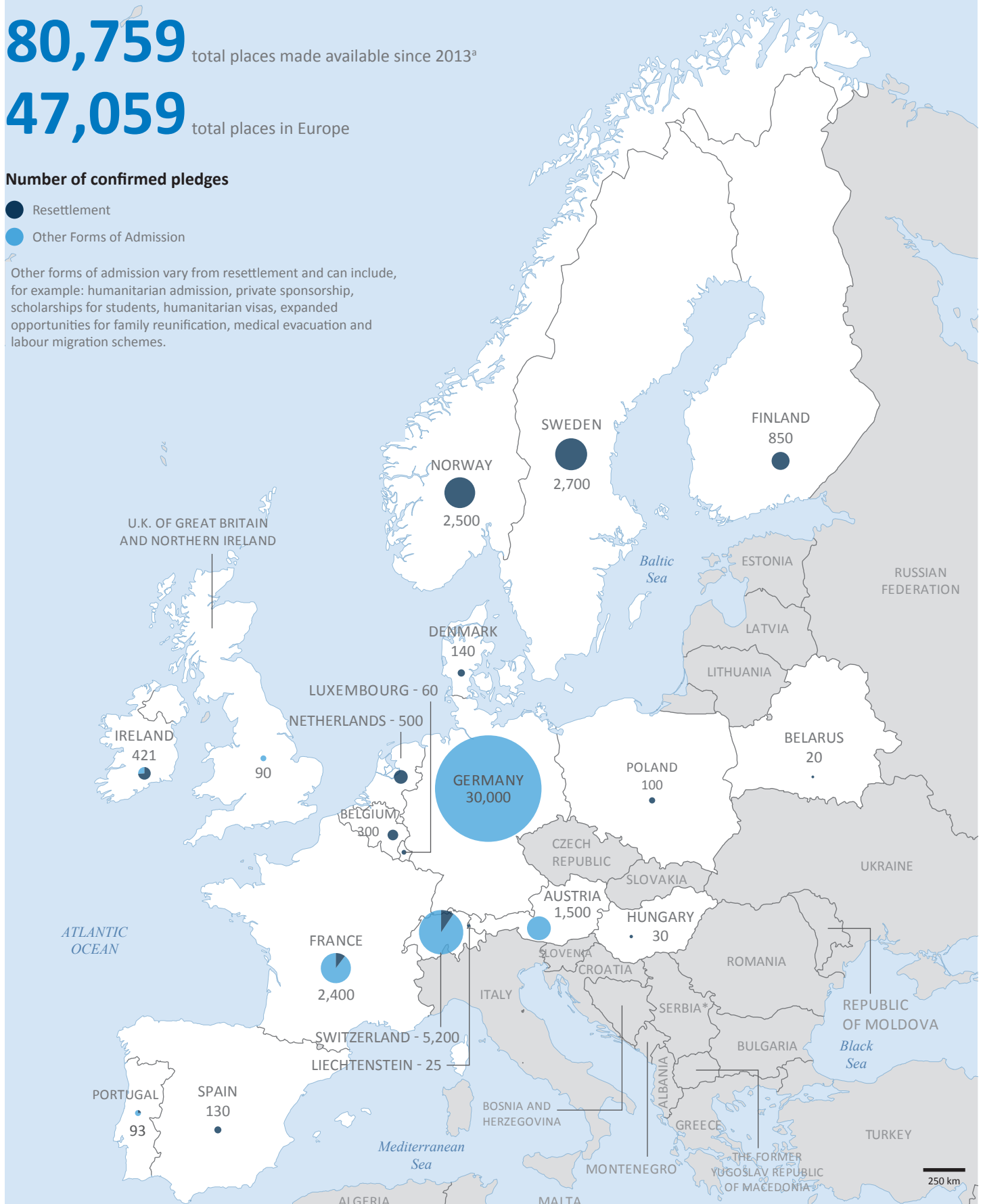
80,759 total places made available since 2013^a

47,059 total places in Europe

Number of confirmed pledges

- Resettlement
- Other Forms of Admission

Other forms of admission vary from resettlement and can include, for example: humanitarian admission, private sponsorship, scholarships for students, humanitarian visas, expanded opportunities for family reunification, medical evacuation and labour migration schemes.



^aIncludes Australia (5,600), Brazil (6,053), Canada (11,300), New Zealand (100), USA (10,527 submissions to date) and Uruguay (120). It also incorporates 4,700 visas issued under a Swiss temporary extended family reunification programme (Sep-Nov 2013); 90 arrivals under the United Kingdom of Great Britain and Northern Ireland's Vulnerable Persons Relocation scheme; 111 persons accepted under Ireland's Syrian Humanitarian Admission Programme; and 1,400 asylum visas issued by France, which enables Syrian refugees to travel to France for the purpose of applying for asylum. Argentina has also created a humanitarian visa programme.

*Serbia (and Kosovo: S/RES/1244(1999)) The boundaries and names shown and the designations used on this map do not imply official endorsement or acceptance by the United Nations.