

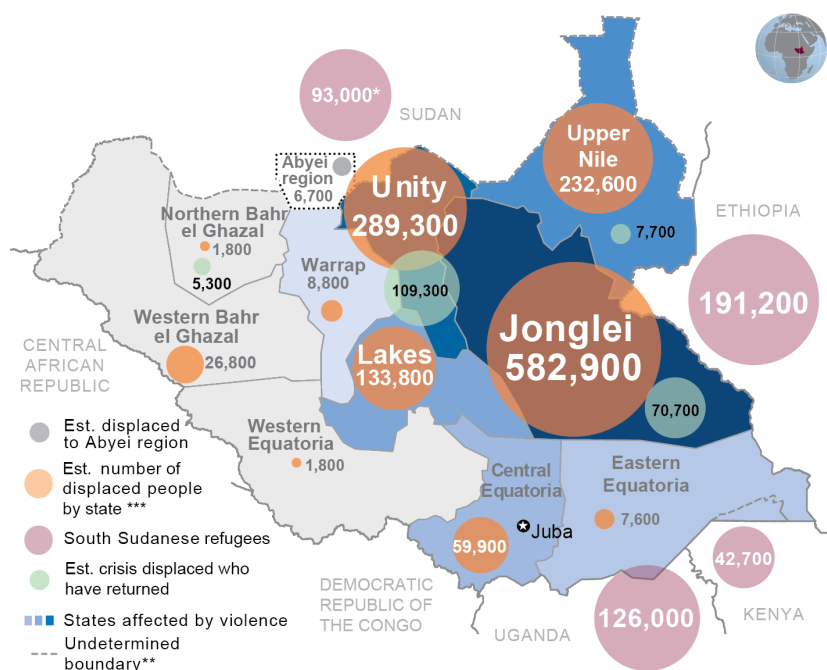
South Sudan Crisis

Situation Report No. 54 (as of 18 September 2014)



This report is produced by OCHA South Sudan in collaboration with humanitarian partners. It covers the period from 11-18 September. The next report will be issued on or around 26 September 2014.

Highlights



- Some 3.1 million people have been reached with humanitarian assistance.
- Malaria was increasing with the highest incidence in Renk and Malakal, both in Upper Nile State.
- There was increased insecurity in parts of Jonglei, Lakes, and Upper Nile States - as well as in the area around Bentiu, Unity State.

The boundaries and names shown on this map do not imply official endorsement or acceptance by the United Nations. **Final boundary between the Republic of South Sudan and Republic of Sudan has not yet been determined. Final status of the Abyei area is not yet determined. *New arrivals from South Sudan (NOT REFUGEES). ***Verification of the IDP & returned figures is a work in progress.

Data Sources: OCHA, UNMISS, IOM, UNHCR, RRC and partners. Refugee figures as of 19 September 2014 OCHA South Sudan, 11 September 2014

3.8 million

People to be assisted by the end of the year

3.1 million

People reached with humanitarian assistance*

1.4 million

People internally displaced by violence

452,900

People have fled to neighboring countries

* This includes people internally displaced, refugees from other countries sheltering in South Sudan and other vulnerable communities who have received assistance since January 2014. This does not imply that the needs of these people have been comprehensively met.

Situation overview

The security situation in Upper Nile State remained tense, with clashes reported at Canal and Dolieb. There was heavy shelling in Renk and humanitarian partners had taken shelter at the UNMISS compound there. Civilians were reportedly fleeing towards Wanthou at the Sudan border.

There were reports of an influx of displaced people into Akobo area, reportedly coming from Nasir, Upper Nile. In Malakal, within the PoC site, some 300 new arrivals were reported following fears of imminent clashes.

In Bentiu, Unity State, gunfire was reported in the area of Rubkona airstrip during the week, as was renewed harassment of staff at the airstrip itself. Meanwhile, heavy rains during the week caused more flooding in the protection of civilians (PoC) site. Partners stressed that the living situation remained very difficult for people in the site and that flooding and poor WASH conditions continued to threaten people's health. WASH partners were working to construct more latrines with additional teams on the ground. In Jonglei, reported troop movements were creating an uncertain situation. Efforts were underway to resume rapid response operations in Canal and Khorfulus areas, once the security situation allowed.

www.unocha.org/south-sudan

The mission of the United Nations Office for the Coordination of Humanitarian Affairs (OCHA) is to mobilize and coordinate effective and principled humanitarian action in partnership with national and international actors.

Coordination Saves Lives

Inter-communal clashes were reported in Lakes State, where the overall security situation was increasingly unstable. In Rumbek and Cueibet, 14 people were reportedly killed in clashes. It was reported these attacks had a gender based violence component.

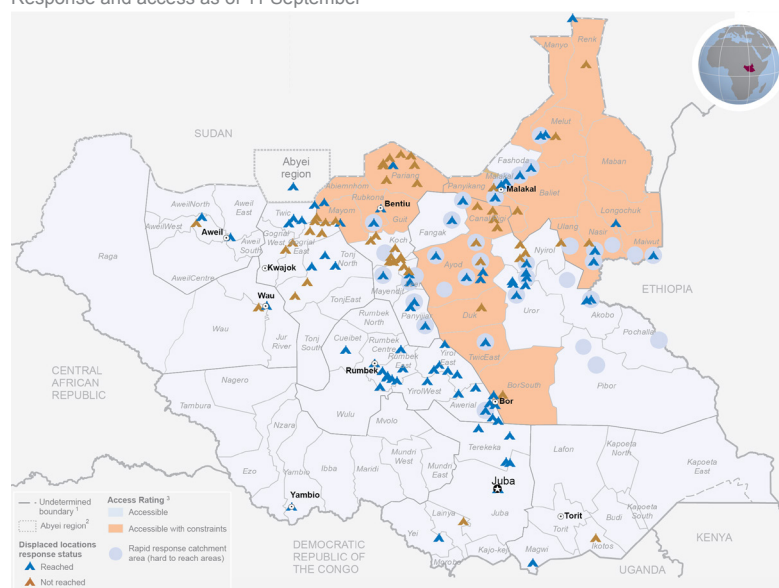
As of 15 September, some 96,800 people were sheltering inside UNMISS Protection of Civilians sites – about 7 per cent of the total estimated 1.3 million people displaced by the conflict inside South Sudan. The largest PoC site in terms of population was Bentiu, with an estimated population of some 47,200 – although partners stressed that biometric registration is needed to verify the people living there.

Clarifications made

The government clarified that the United Nations and other humanitarian cargo agencies would be permitted to continue their normal operations at Juba Airport in the midst of construction improvements there. The government also addressed a circular issued on 12 September on foreign workers, but partners continued to seek clarity on the document.

Humanitarian response

Response and access as of 11 September



Malaria is on the increase

Health partners noted malaria is on the increase, with the highest incidence reported in Renk and Malakal both in Upper Nile State.

Malaria transmission is expected to increase throughout the rest of the rainy season. A total of 3,160 cases have been reported during the reporting period.

Overall, malaria has been on the increase for the last ten weeks, with significant increases recorded in Malakal PoC and in Mingkaman. In response to the increase, partners have been promoting insecticide treated net use, and spraying stagnant water. Partners recommend that malaria prevention and control should be strengthened in displacement sites, with priority given to destroying vector breeding grounds, indoor residual spraying systems, distribution of bed nets, and prompt case management.

Outside displacement sites, three states - Lakes, Northern Bahr el Ghazal, and Warrap - exceeded malaria epidemic threshold levels at some point since January.

Communication on how to prevent malaria, and when to seek treatment, is ongoing.

Rapid response operations continued

Rapid response operations continued to reach populations in hard to reach areas of the conflict-affected states. 37 teams were deployed as of 17 September, however in some cases their operations were paused due to security concerns.

In Jonglei, in Pigi/Canal, teams deployed to resume WASH, food, health, and nutrition activities that were earlier on hold due to security concerns - however, the security situation remained volatile and it was unclear whether the operations would continue. An assessment was completed in Chuil, and clusters were mobilising to respond to the food, medicine, livelihood and education needs identified.

In Upper Nile, an assessment team was sent to Ulang and surrounding areas. In Rom and Melut, food distribution was ongoing for some 34,600 people. Registrations were underway in Baliet with distributions of food expected to commence soon after, if the uncertain security situation allowed.

Elsewhere in Upper Nile, health partners completed an assessment in Panyikang County, and NFI partners completed a response in Baliet, distributing NFI kits including plastic sheets,

HIV response in displacement sites

Partners continued to respond to the needs of people living with HIV/AIDS who are affected by the conflict, and to increase prevention activities and awareness raising within displacement sites.

The health cluster was establishing centers in Bor PoC to address the HIV/AIDS and tuberculosis cases there. In addition, an HIV and AIDS consultant was assessing the overall HIV situation in Bor town and the PoC.

blankets, and mosquito nets.

Kala-azar response continued

Poor access due to the rain and security situation were exacerbating the Kala-azar caseload. Kala-azar is a disease endemic to South Sudan, but has seen a spike in recent weeks. To date, since January, 4,099 cases and 125 deaths have been recorded - compared to some 2,660 in all of last year. Lankien in Jonglei State remains the most affected area. Cases of kala-azar were also reported in Akoka and Wau Shilluk, in Upper Nile State.

Partners estimated some 9,000 kala-azar cases could be identified by the end of the year. Partners were supporting response by providing kala-azar drugs and test kits. In addition, partners noted that the nutritional status of kala-azar affected people is of critical concern.



Camp Coordination and Camp Management

Response

- **Access roads were constructed in Bentiu** from the UNMISS base to the gates of the Protection of Civilians sites.
- **Site preparation works were 90 per cent complete in Mingkaman** as partners continued to work on the new site. Roads were complete while drainage works were ongoing, along with culvert installation. The site should be completed by the end of September, and some 20,000 people had registered to relocate.
- **Registration continued in Juba** with 28,010 people registered at all PoC's. Relocation activities also continued, with some 9,457 people relocated to the new site.
- **Relocations continued in Malakal** with over 13,000 people relocated to the new PoC site. Reconfiguration of the new site was ongoing in order to maximize the space available, with additional extension planned.
- **Relocation in Bor was planned to begin next week**, with the new PoC site able to host 7,000 people. Partners noted that 500 meters of culverts are still needed before relocations can begin. They also noted an outflow of population, with 2,722 individuals currently registered at Bor PoC.

Needs, gaps, and constraints

- Congestion in Bentiu meant a lack of space to build latrines in some sectors of the greater PoC site. Heavy machinery was needed to proceed with drainage work.

Education

Response

- **New enrollments:** The number of children enrolled in emergency education rose to 183,035 (42 per cent per cent girls).
- **New temporary learning spaces were established in Maban and Kodok**, both in Upper Nile State. This allowed 87 children (41 per cent girls) access to education.
- **Fifteen schools re-opened in Maban refugee camp** after temporary closure due to insecurity in the area. Classes were ongoing.
- **International Literacy Day celebrations continued** In Kodok, Upper Nile State, an event was held with songs and dramas on the value of education.

Needs, gaps, and constraints

- **Ongoing constraints** included non-payment of teachers' salaries and textbook shortages.
- **School occupation remained a challenge.** During the reporting period, 89 schools were reportedly occupied by displaced people and armed forces (36 by armed forces, 48 by displaced people, two by both displaced people and armed forces and three whose status was unknown). School closure leaves children out of school and vulnerable to abuse.



Emergency Telecommunication

Response

- The cluster was supporting twelve sites across the country with emergency connectivity services, in addition to six sites supported by partners.
- **A feasibility assessment was conducted in Koch, Unity State**, by ICT partners. It was noted there were five agencies working without internet connection. The cluster planned to install connectivity services in the coming week.
- **A technician deployed to Nyal, Unity State** to install connectivity services. There were no shared ICT services available.

Needs, gaps, and constraints

- **Authentication of kits in Mingkaman and Bentiu:** Partners continued working on a software upgrade to improve the authentication system of the ETC Response Solution connectivity kits operating in Mingkaman and Bentiu.
- **Installation of renewable energy in Ganyiel, Unity State was postponed.**
- **Lack of staff and supplies continued to limit response.** There remained a lack of radio room staff in Malakal, Bentiu, and Bor. Procuring supplies was also challenging with lengthy import procedures and volatile security causing delays.



Food Security and Livelihoods

Response

- **Rapid response operations:** Food assistance distribution teams were deployed in Motot and Yuai, Jonglei State; Buaw and Koch, Unity State, and in Whaljak, Upper Nile State. The Buaw, Motot, and Koch teams have completed their distributions for about 81,000 beneficiaries. Currently, food assistance mobile teams were operating in Akobo, Gorwai, Ganyiel, and Jiech, Jonglei State; Lul, Maiwut, Rom, Pagak, in Upper Nile.
- **Livelihood kits distributed:** Nearly 140,000 emergency crop, vegetable, and fishing kits were distributed to households in Jonglei, Unity, and Upper Nile State.
- **Livestock vaccination continued:** Livestock vaccination was ongoing in Northern Bahr el Ghazal State. Kits were distributed in the Bar el Ghazals and Western Equatoria with the capacity to vaccinate one million animals.



Health

Response

- **Mortality among displaced people:** Acute watery diarrhea, acute respiratory infection, and malaria continued to account for the majority of disease burden among people displaced by the conflict. Under-five mortality and crude mortality rates remained under the emergency threshold.
- **Cholera in decline, but response continued:** As of 7 September there were a total of 6,083 cholera cases with 139 deaths. There were 17 new cases identified this week, a decline from 28 last week and 56 the week before. There was a cholera alert in Lobonok Payam, Juba Country, with lab results pending. At this site, there were 47 suspected cases with 6 deaths.

	During the past week	Cumulative since January
People reached	72,088	2,623,043
Outpatient consultations	71,680	1,311,376
Cholera cases	17	6083
Hepatitis E cases (Mingkaman)	0	103
Measles vaccinations	-	468,953
Polio vaccinations	-	363,105
Women provided ante-natal care	2,328	62,809
Women with assisted deliveries	370	10,802

Source: Health Cluster, as of 18 September

- **Ebola preparedness:** Ebola prevention and preparedness activities continued and were expanded to other states with key borders, namely Central, Eastern and Western Equatoria, where 112 medical professionals were trained on arrival screening.
- **Medical teams continued to support rapid response operations:** In Longochuk, Upper Nile State, partners continued to respond with immunization, nutrition screening and response and support for primary health care, focused around Mathiang and Chotbora. Health partners were also deployed in Chuil, Jonglei State and in Panyikang, Upper Nile State.
- The integrated polio, measles and vitamin A campaign continued, with partners currently working in Leer .

Needs, gaps, and constraints

- **Gaps in mental health support:** There were a lack of trained personnel to support the mental health needs of displaced people.



Mine Action

Response

- **A hand grenade was found in Bentiu PoC site,** the cluster immediately responded and took custody of the grenade.
- **Surveillance continued of a road near Bor** following reports of UXOs. Some UXOs were removed.
- **Education sites were being surveyed in Malakal** in partnership with Education cluster colleagues. Textbook storage sites had been potentially used for UXO storage.
- **Cluster continued its support** food partners providing clearance and surveillance on the Pageri-Opari road as well as Juba-Kalo Keli road.
- **Responding in Leer:** A cluster team was mobilizing to Leer following reports of UXO there.

Needs, gaps, and constraints

- **Weather impedes access:** Mine Action teams were still facing challenges working in Unity and Upper Nile due to security and weather constraints but they continue to support the wider humanitarian community.



Nutrition

Response

- **Nutrition treatment centers in operation:** 183 locations were operational with functioning outpatient treatment programmes, 25 with stabilization centers, 113 with targeted supplementary feeding programmes and 57 with blanket supplementary feeding programmes.

Needs, Gaps, Constraints

- **The nutrition situation in Nasir, Longochuk, in Upper Nile State and Pigi/Canal in Jonglei State remained concern.** An additional outpatient therapy has been established but more capacity need to meet the needs.

	Cumulative since January
People reached with nutrition support	524,990
People screened for acute malnutrition (6.8 per cent identified with SAM; 16.3 per cent identified with MAM)	816,140
Admissions to SAM treatment	54,813
Admissions to MAM treatment	89,803
Pregnant and lactating women (PLW) screened for acute malnutrition (25.2 per cent identified with acute malnutrition)	129,662
PLW admission to acute malnutrition treatment programs	13,644
Children enrolled in blanket supplementary feeding (Jan-July)	344,172
PLW enrolled in blanket supplementary feeding (Jan-July)	22,558

Source: Nutrition Cluster, as of 18 September 2014



Protection

Response

- **People reached with protection support:** A total of 3,325 individuals (1928 women, 918 men, 340 girls and 139 boys) were reached with GBV messages through information dissemination sessions and door-to-door approaches in PoCs and outside PoCs ongoing in Awerial, Bor, Juba, and Bentiu.
- **GBV trainings conducted:** Trainings for community chiefs on their expected roles on GBV prevention were conducted in Awerial and Bentiu. In UN house PoC1, 13 musicians were trained on how music can be used as an education tool in preventing and responding to GBV.
- **Protection is part of rapid response in hard to reach areas:** Since March 2014, 6,930 children have been reached during Rapid Response missions. During August, three missions were conducted in Kalgak, Canal County, Kich Kuon, Ulang County and Duk Islands, Duk County where 3,973 children and 6,160 adults were reached.

Needs, gaps, and constraints

- **Identification of separated children:** As of 12 September 2014 there were 5,296 children registered as unaccompanied, separated or missing in the Child Protection Information Management System (CPIMS).

- **Safe space activities paused:** In PoC-1 in UN House, in Juba, safe space activities for persons affected by GBV have been paused due to new arrivals occupying the tent designated for safe space for the last three weeks. The GBV sub cluster is advocating on this issue with the CCCM sub cluster.
- **Child labour an area for increased focus:** Very limited data is available about the impact of the current crisis on child labour. A consultant was in South Sudan until the end of September to support to child protection partners in implementing programming in the current context as well as to identify priorities for the SRP 2015. An inter-sectoral workshop for Child Protection, Education and livelihoods partners will be delivered to enhance linkages.
- **Issues affecting elder people need addressed:** There remains a gap in prioritising the special needs of elderly people.

Water, Sanitation and Hygiene

Response

- **WASH partners have reached some 3.1 million people:** Since December, 49 partners have assisted over 3.1 million conflict-affected people (an additional 400,000 in the last month) of whom at least half were displaced people – in over 55 sites with emergency water, sanitation, and hygiene assistance.

- **Rapid response operations:** The cluster had six mobile partners (with multiple teams per agency), and they are responding in the locations detailed in the table at right.

- **Meeting standards:** As of 18 September global emergency standards for water supply (15 litres p/p/d) were achieved in 25 sites. Sanitation coverage (at least 1 latrine per 50 people) had been achieved in 15 sites. Keeping up the rate of latrine construction to match the rate of latrine decommissioning is making the task of scaling up latrine coverage all the more challenging in many locations.

- **Cholera response continued.** Cholera preparedness and prevention activities continued, despite the continued drop in new cases. Response and prevention activities were ongoing in Juba and in Wau Shilluk, Upper Nile State. Following an increase in Acute Watery Diarrhea (AWD) cases reported in Lobonok, Juba County, partners have deployed an emergency WASH response.

- **Bentiu PoC site response** has held steady with water supply at around 10.8 litres per person per day, and 1 latrine for every 99 people. As of last week, an additional 401 latrines were needed to reach emergency standard. Teams are on the ground to increase the rate of latrine construction. Construction is in progress, and containers are being received for further scale up.

State	Location	Status of WASH emergency teams
Central Equatoria	Juba County	Ongoing response
Eastern Equatoria	Ikwotos and Magwi/Lapo counties	Ongoing response
Jonglei	Chuil, Nyirol County	Response to begin.
	Jiech, Ayod County	Ongoing response
	Mogok, Ayod County	Assessment ongoing
	Pigi county	Response to begin
	Yuai, Uror County	Response ongoing
Upper Nile	Chotbora and Mathiang, Longochuk	Response ongoing.
	Pagak/Maiwut, Maiwut County	Response to begin
	Panyikang, Malakal County	Assessment ongoing
	Wathjak, Ulang County	Response to begin
	Wau Shilluk, Fashoda County	Response ongoing

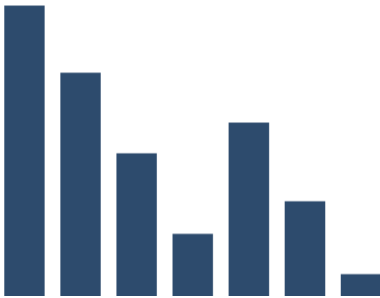
Source: WASH Cluster as of 18 September 2014

Needs, gaps, and constraints

- **Recurring challenges:** Cluster activities remained constrained by inadequate funding, limited access to insecure locations and the need for additional qualified WASH personnel.

Humanitarian Financing

New contributions to Crisis Response Plan by month, January to August



The South Sudan Crisis Response Plan (CRP) was 53 per cent funded as of 19 September, with US \$838 million needed to provide humanitarian assistance in response to the crisis.

While generous donor support to date has resulted in increased levels of funding to the country compared to previous years, the need is also unprecedented.

As the third quarter of the year approaches, month-on-month contributions have declined significantly. After strong giving at the start January, when \$220 million was contributed (as the crisis began) and in May (with the Oslo donor conference), with \$150 million contributed, August saw only \$37 million contributed.

Background on the crisis:

Conflict broke out in Juba, the capital of South Sudan, on 15 December 2013 and quickly spread to several other states. Within weeks, thousands of people had been killed or wounded in the violence, and hundreds of thousands displaced from their homes. Despite the signing of a cessation of hostilities agreement on 23 January 2014 and a recommitment to the peace process on 9 May, fighting between Government and opposition forces has continued, especially in Jonglei, Unity and Upper Nile states. The crisis has led to a serious deterioration in the food security situation, and some 3.9 million people will face alarming levels of food insecurity by August 2014.

For further information or to provide feedback on this product, please contact:

Jennifer Paton, Public Information and Reporting Officer, patonj@un.org, +211 920 100 413
 Websites: www.unocha.org/south-sudan | <http://southsudan.humanitarianresponse.info/>
 Facebook UNOCHA South Sudan | Twitter @OCHASouthSudan