

# Humanitarian Bulletin

## Somalia

May 2016 | Issued on 30 May 2016

### HIGHLIGHTS

- Partners respond to a spike in cases of AWD/cholera in southern and central Somalia
- Flooding as rains intensify and river levels rise
- The impact of drought continues in Puntland and Somaliland, despite rains
- Humanitarian needs outpace available funding

### FIGURES

# of people in humanitarian emergency and crisis	1m
# of people in food security stress	3.7m
# of acutely malnourished children under age 5	305,000
Source: www.fsnau.org (July-December 2016 projection)	
# of internally displaced people	1.1m
# of Somali refugees in the Horn of Africa and Yemen	1.2m
Source: UNHCR	

### Humanitarian Appeal

### FUNDING

**885 million**  
requested for 2016 (US\$)

**22%** (\$197 million)

**\$274 million**  
Total humanitarian funding received for Somalia

(reflects reported funding on FTS as of 27 May 2016)

Source: <http://fts.unocha.org>



Drought continues to affect thousands in Puntland and Somaliland.  
Credit: WFP Somalia

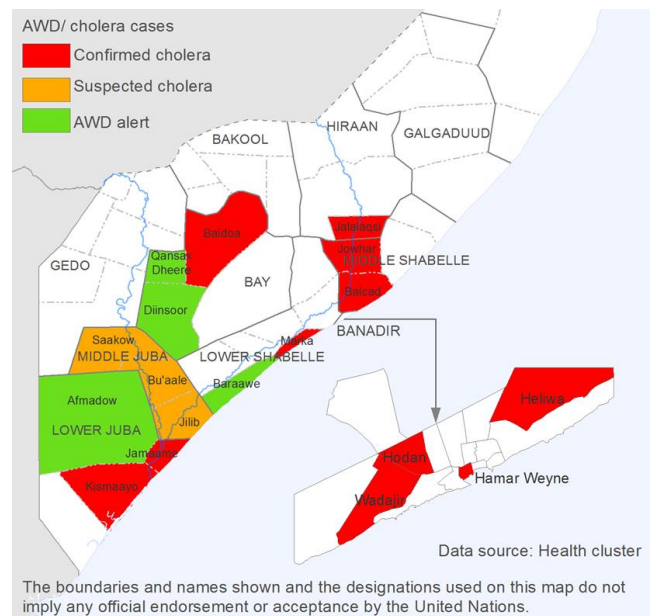
### In this issue

- AWD/cholera cases spike P.1
- Flood as rains intensify P.2
- Drought in Puntland, Somaliland P.3
- Needs outpace available funding P.4

## Cases of Acute Watery Diarrhoea spike

### Over 7,000 cases reported in first quarter of 2016

A major spike in cases of acute watery diarrhoea (AWD) and cholera in southern and central Somalia is of serious concern. Over 7,000 AWD/cholera cases have been reported in the first quarter of 2016, a significant increase from the 5,257 cases reported in all of 2015. The data collected from 247 routine sentinel surveillance health facilities indicates that more than half were children under the age of five. Of the 300 deaths reported, 40 per cent were among children under five. Banadir, Bay, Hiraan, Lower Juba, Lower Shabelle, Middle Juba and Middle Shabelle are the most affected regions. There have also been cases of AWD/cholera and related deaths in neighbouring Bu'uale, Jilib, and Saakow districts. It is likely that there could be under-reporting since many areas are inaccessible to reporting systems and partners, and many do not have the resources to travel and seek treatment at health facilities.



### US\$2 million in CERF funds to complement response

Humanitarian partners have stepped up response to the outbreak. An additional US\$2 million from the Central Emergency Response Fund (CERF) will be provided to help contain the outbreak. At present, health and water, sanitation and hygiene (WASH) supplies to cover an estimated caseload of 500 severe and 12,000 moderate cases are being distributed. Projections of 15,000 severe and 60,000 moderate cases over the coming months have led to plans for a significant and rapid scale up of the response. To help stabilize and contain the outbreak, the CERF rapid response grant of \$2 million will strengthen and complement response activities already underway by WASH and Health partners. This is in addition to an earlier reserve allocation of \$600,000 from the Somalia Humanitarian Fund (SHF) for the response to AWD/cholera outbreak in Kismayo.

## BASELINE

Population (UNFPA 2014)	12.3m
GDP per capita (Somalia Human Development Report 2012)	\$284
% pop living on less than US\$1 per day (UNDP/World Bank 2002)	43%
Life expectancy (UNDP-HDR 2011)	51 years
Under-five mortality (FSNAU 2015)	0.52/10,000 /day
Under-five global acute malnutrition rate (FSNAU 2015)	13%
% population using improved water sources (KAP Survey 2015)	55%

## CLUSTERS

### Lead and co-lead organizations

Education	UNICEF SC-Alliance
Food security	FAO/WFP
Health	WHO
Logistics	WFP
Nutrition	UNICEF CAF/DARO
Protection	UNHCR DRC
Shelter/NFIs	UNHCR UNHABITAT
Water, sanitation & hygiene	UNICEF OXFAM

So far, over 17,000 hygiene kits have been distributed to the affected areas by WASH partners, while 50,000 hygiene kits have been prepositioned. Hygiene promotion activities are being conducted in some affected districts by WASH partners with the added support of education partners, whose training material will be included in education activities when schools reopen.

Health partners have distributed five diarrhoea disease kits, 66,000 oral rehydration sachets and 500 boxes of Zinc to affected communities in Lower Juba, Lower Shabelle and Middle Juba regions. In Mogadishu, five cholera treatment tents, eight diarrhoea disease kits, and fluids for about 800 severe and 12,000 moderate cases are on stand-by for distribution to other affected areas when access permits.

The main challenges for response include drug stock-outs in health facilities across Somalia, access constraints and limited number of partners on the ground. Additional funding is also required to boost the response and further complement CERF, SHF and agency responses to date.

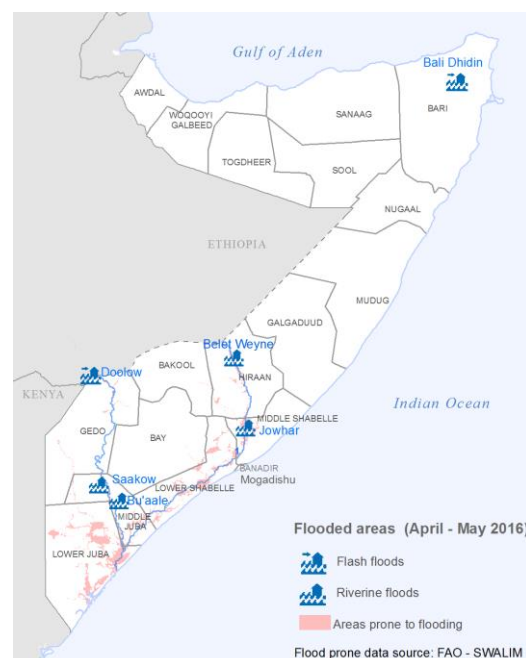
## Flooding as rains intensify

### Nearly 70,000 people displaced in Belet Weyne

Tens of thousands people have been affected by flooding in southern and central Somalia following heavy rains in parts of Somalia and the Ethiopian Highlands. Seven villages in Jowhar district and five villages in Balcad district were affected. Flash floods were also reported in Galgaduud, Sanaag and Sool.

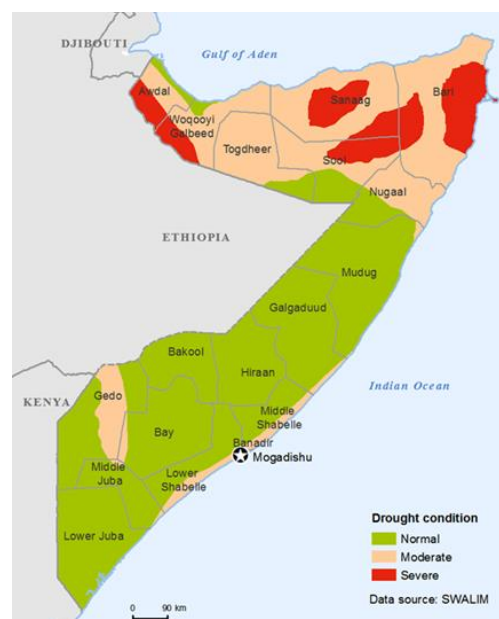
Belet Weyne in Hiraan region is the most severely affected by the floods. According to the local community the current floods are the worst since 1981. Humanitarian partners and local authorities estimate that nearly 70,000 people in Belet Weyne town have been displaced as a result of the flooding following heavy rains. An estimated 36,000 displaced people are in Ceel Jaale settlement alone. More people have reportedly been displaced to neighbouring villages including Banaaney, Faafgumarey, Ilkacado, Jawil and Shiirkaneco. Nearly 60 per cent of Belet Weyne town is inundated by flood waters. The flooding has disrupted communications and electricity supply to the town. Education activities in some areas have also been affected. Protection concerns have been raised, especially related to gender based violence.

Humanitarian partners and civil society organizations continue to scale up response in flooded areas. Hygiene promotion activities have also been intensified in areas where people have been displaced. Health partners have established mobile health services in Banaaney, Ceel Jaale and Shiirkaneco, and efforts are ongoing to drain water from Belet Weyne hospital. Food security partners are finalizing plans to intervene with food relief and unconditional cash transfers to the displaced and affected vulnerable households in and around Belet Weyne. Immediate relief for 10,000 of the most vulnerable people and one month general food distribution for an estimated 60,000 people is planned to start by Thursday 2 June, if not earlier. Shelter cluster partners are mobilizing NFI kits for an estimated 24,000 people. The local authorities have established a police post in Ceel Jaale where most people have been displaced to. Security patrols have also been increased to curb cases of gender based violence, which are common during such emergencies.



## Drought response in Puntland and Somaliland

Even though the Gu rains have brought an end to drought conditions in some areas and opportunities for recovery among affected communities, the impact of the drought in Puntland and Somaliland continues to compound an already challenging humanitarian situation. In some areas, 60 to 80 per cent of herds have been lost, with devastating impact on families who depend on livestock for income and food. Nearly 385,000 people in Puntland and Somaliland face acute food insecurity and an estimated 1.3 million people are at risk of slipping into acute food insecurity if they do not receive assistance. Overall, nearly 1.7 million or 37 per cent of the 4.6 million people in Puntland and Somaliland need some form of humanitarian assistance.



### Response to mitigate drought impact continues

Humanitarian partners have continued critical life-saving assistance and are boosting response with additional resources that have come in since March 2016 when the Humanitarian Coordinator launched the Call for Aid requesting \$105 million. Priority is given to putting cash in people's pockets to save lives and enable recovery of livelihoods for pastoralists and agro-pastoralists. Between January and April 2016, Health partners delivered health care services to more than 82,000 people in Puntland and Somaliland. The food security cluster reached nearly 354,000 people with food and safety net-related interventions. During the same period, approximately 168,450 people benefited from activities aimed at building livelihoods. Another 27,700 people received livelihood seasonal inputs including seeds, farming tools, fishing equipment, irrigation vouchers and livestock treatment and distribution.

The Education cluster reached over 19,000 in the first quarter of the year. Some 14,000 people benefited from protection activities. The Shelter Cluster assisted approximately 3,800 people with household items. More than 11,000 acutely malnourished children were admitted into outpatient therapeutic and targeted supplementary feeding programmes by the Nutrition cluster. The WASH cluster reached nearly 192,000 people with temporary and sustainable access to safe water through water vouchers and rehabilitation of permanent water points. An estimated 150,000 people benefited through the rehabilitation of boreholes.

Mobile health clinics and hygiene promotion activities are ongoing in the affected areas. In Puntland, partners have pre-positioned nutrition supplies, including 500 cartons of high energy biscuits. In Somaliland, 15,000 cartons of ready-to-use therapeutic food have been provided to the Ministry of Health for wider distribution. WASH and Education Clusters are jointly carrying out an integrated response by distributing water to six schools in Puntland and Somaliland to promote hygiene and improve school attendance.

The Humanitarian Coordinator for Somalia, Mr. Peter de Clercq, visited drought affected Puntland and Somaliland in April to assess the magnitude of the drought as well as ongoing response. He held talks with government officials, representatives of drought committees, donors and humanitarian partners. The need for urgent action to avert a further deterioration of the situation was reiterated. The Education Cluster estimates that nearly 34,000 children and youth are at risk of dropping out of school if they are not supported.

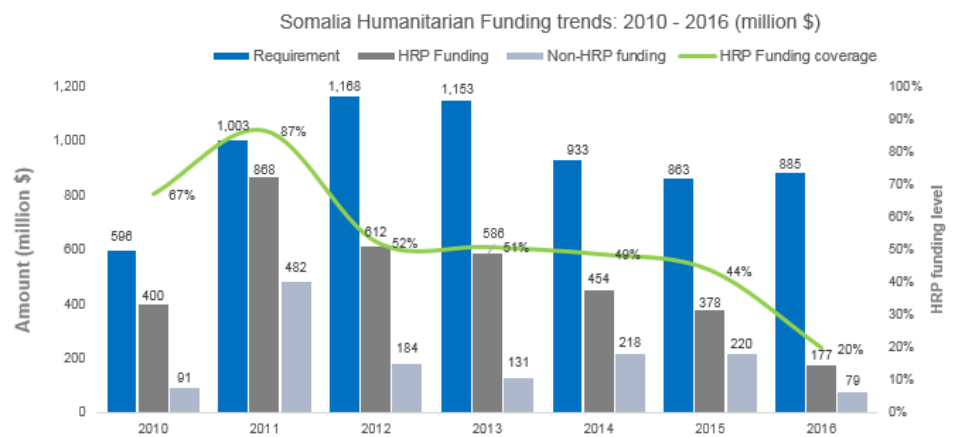
*Assistance to pastoralists includes livestock health support, such as vaccinations and possible restocking in the future*

## Humanitarian needs outpace available funding

While some funding has been received towards response in Somalia, humanitarian needs continue to outpace available funding. At nearly the halfway mark in the year, US\$274 million has been received for life-saving and life-sustaining activities. This includes \$197 million or 22 per cent of the \$885 million requested under the 2016 HRP and \$77 million for humanitarian activities outside the HRP. However, the level of funding is not commensurate with the current humanitarian needs, which continue to grow in the face of the drought in Puntland and Somaliland, new cases of disease outbreaks and flooding. Meanwhile, a total of \$24.2 million has been allocated under the CERF and the Somalia Humanitarian Fund. Of this, \$18.3 million is helping to scale up response in drought-affected areas as well as AWD response in Jubaland. Another \$5.9 million will be used to support vulnerable internally displaced persons in Baidoa and Kismayo.

### Humanitarian Funding Requirements and Funding: 2010 to 2016

Chart Area



For further information, please contact:

**Tapiwa Gomo**, Head of Communication, [gomo@un.org](mailto:gomo@un.org), Tel. +254-731-043197

**Antonette Miday**, Public Information Officer, [miday@un.org](mailto:miday@un.org), Tel. +254-731-043156

**Kenneth Odiwuor**, Public Information Officer, [odiwuor@un.org](mailto:odiwuor@un.org), Tel. +254-734-800120