

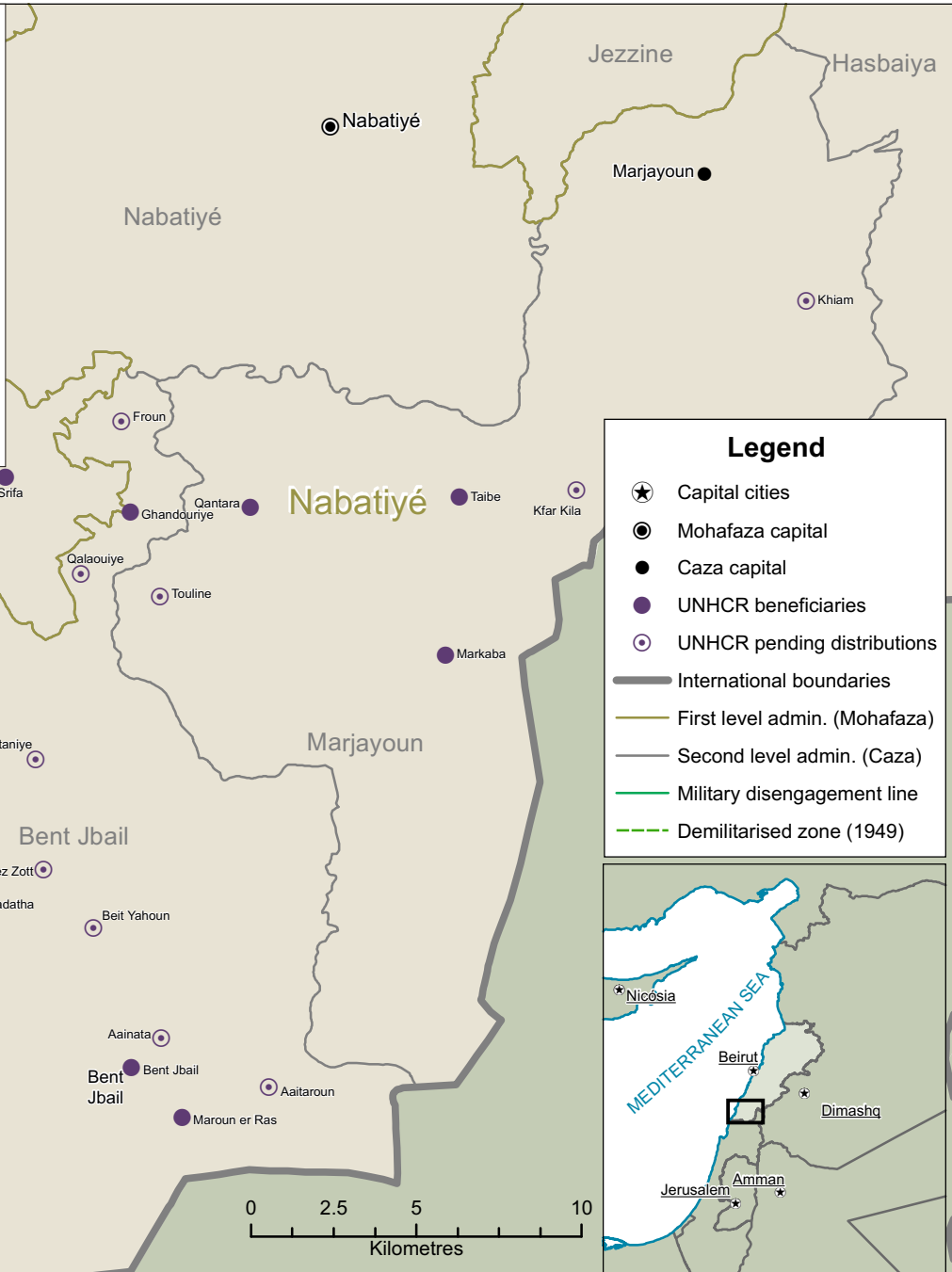


# Lebanon UNHCR activities

26 August 2006



Location	P-Code	Date	Tents		Blankets		Mattresses		Plastic Sheets		Kitchen Sets		Hurricane Lamps		Cooking Stoves		Jerry Cans		Soap		Diapers		Sanitary napkins		Underwear		
			Dist	Pend	Dist	Pend	Dist	Pend	Dist	Pend	Dist	Pend	Dist	Pend	Dist	Pend	Dist	Pend	Dist	Pend	Dist	Pend	Dist	Pend	Dist	Pend	
<b>High Priority</b>																											
Al Bayyadah	LBN63042		80	60	1375	480	240	480	160	240	80	100	0	190	80	100	480	100	400	1250	560	380	1250	480	60		
Al Qanjarah	LBN43034	24-Aug	0	0	0	0	0	150	0	0	0	168	0	0	0	0	0	0	0	0	80	80	400	400	50		
Al Qulaylah	LBN63044		200	200	1250	1250	1040	350	590	740	560	400	560	740	560	2080	720	0	530	80	2900	330	2900	200			
As Siddiqin	LBN63100	23-Aug	200	130	2500	400	2900	1060	890	590	930	590	930	590	2080	720	0	530	80	2900	330	2900	200				
Ayanata	LBN41001		290	290	1780	1780	1060	360	530	360	1240	360	330	1780	290	290	1610	320	320	1610	320	1610	200				
Ayta Ashi Shab	LBN41005	19-Aug	20	180	4125	0	852	758	1610	320	650	320	650	320	1010	200	200	1010	200	200	1010	130	130				
Ayta Az Zult	LBN41002		130	130	1010	1010	1010	200	200	1010	200	200	1010	130	130												
Beit Lif	LBN41006		220	220	1400	1400	1400	660	260	260	500	400	400	500	400	800	260	220	1400	220	1400	220	1400	220			
Bint Jubayl	LBN41008	26-Aug	560	0	3960	0	3960	0	2610	0	740	0	1210	0	740	0	5580	0	2090	0	1430	0	3960	560			
El Kham	LBN43020		170	170	2100	2100	1316	800	260	30	384	86	250	800	190	250	1460	170	170	2100	170	2100	170				
Ett Taibe	LBN43041	24-Aug	200	0	1250	210	144	400	400	280	100	150	100	100	100	100	100	100	100	100	100	100	100	400	50		
Frun	LBN41018		50	50	400	400	64	110	310	160	0	300	0	128	22	300	200	150	190	810	120	120					
Ghanduriyah	LBN41019	24-Aug	120	0	750	60	756	1010	1010	1010	200	200	400	200	1010	200	1010	200	1010	130	130	140	140				
Haddathah	LBN41020		130	130	1010	1010	1010	200	200	1010	200	200	1010	130	130												
Kafra	LBN41025		140	140	740	740	740	150	150	150	150	150	150	150	150	380	150	390	740	140	140	140	140				
Marun Ar Ra's	LBN41029	26-Aug	20	0	170	0	170	0	170	0	30	0	70	0	30	0	170	0	30	0	30	0	170	20			
Qallawiyah Tulin	LBN43043		80	80	670	670	670	130	130	270	130	130	130	130	130	130	130	130	130	670	80	80	80				
Rahaf	LBN41034	26-Aug	30	0	130	0	140	0	100	0	30	0	50	0	30	0	220	0	50	0	40	0	130	30			
Sribbin	LBN41040	24-Aug	360	0	2700	0	1842	172	710	1310	360	40	2160	0	360	40	1840	180	400	400	2020	250	250				
Srifia	LBN63102	26-Aug	200	0	2360	0	2660	0	980	0	380	0	530	0	320	0	1130	0	440	0	260	0	2360	200			
Yatar	LBN41044	26-Aug	200	0	2360	0	2660	0	980	0	380	0	530	0	320	0	1130	0	440	0	260	0	2360	200			
Zbqin	LBN63113		310	310	2810	2810	2570	1210	410	610	410	610	410	610	410	1420	410	380	2810	310	310	310	310				
Makabe	LBN43025	23-Aug	100	0	1080	0	1080	0	1080	0	220	0	430	0	220	0	1080	0	220	0	220	0	1080	100			
<b>Medium Priority</b>																											
Kaffir Keeler	LBN43019		70	580	580	580	120	230	100	100	120	230	100	580	120	100	100	580	70	580	70	580	70				
Sultanayah	LBN41039		60	480	480	480	100	190	100	100	100	190	100	480	100	100	100	480	60	480	60	480	60				
Bayt Yahoun	LBN41007		20	90	90	90	20	30	20	30	20	30	20	30	20	30	20	30	20	90	20	90	20				
Mawatin	LBN63074		60	430	430	390	90	170	90	430	120	90	430	60	430	60	430	60	430	60	430	60	430	60			
Dirdgharaya	LBN63039		40	290	290	290	60	120	60	290	60	290	60	290	60	290	60	290	40	290	40	290	40				
<b>Low Priority</b>																											
Henieh	LBN63052		20	590	590	140	140	70	50	230	140	70	50	230	140	70	50	230	20	590	20	590	20				
Dibbin	LBN41013		140	730	730	1150	180	290	180	730	270	180	730	140	730	140	730	140	730	140	730	140	730	140			
Ayitarun	LBN41003		540	3590	3590	1790	650	930	650	2150	650	930	650	2150	650	930	650	2150	540	3590	540	3590	540				
<b>SUM</b>			<b>1890</b>	<b>3070</b>	<b>20400</b>	<b>21230</b>	<b>11844</b>	<b>25890</b>	<b>7360</b>	<b>19050</b>	<b>2260</b>	<b>5410</b>	<b>5302</b>	<b>8666</b>	<b>1908</b>	<b>5952</b>	<b>11520</b>	<b>21950</b>	<b>3550</b>	<b>5740</b>	<b>2510</b>	<b>5880</b>	<b>0</b>	<b>37460</b>	<b>0</b>	<b>4790</b>	



The designations employed and the presentation of material on this map do not imply the expression of any opinion whatsoever on the part of the Secretariat of the United Nations concerning the legal status of any country, territory, city or area or of its authorities, or concerning the delimitation of its frontiers or boundaries.