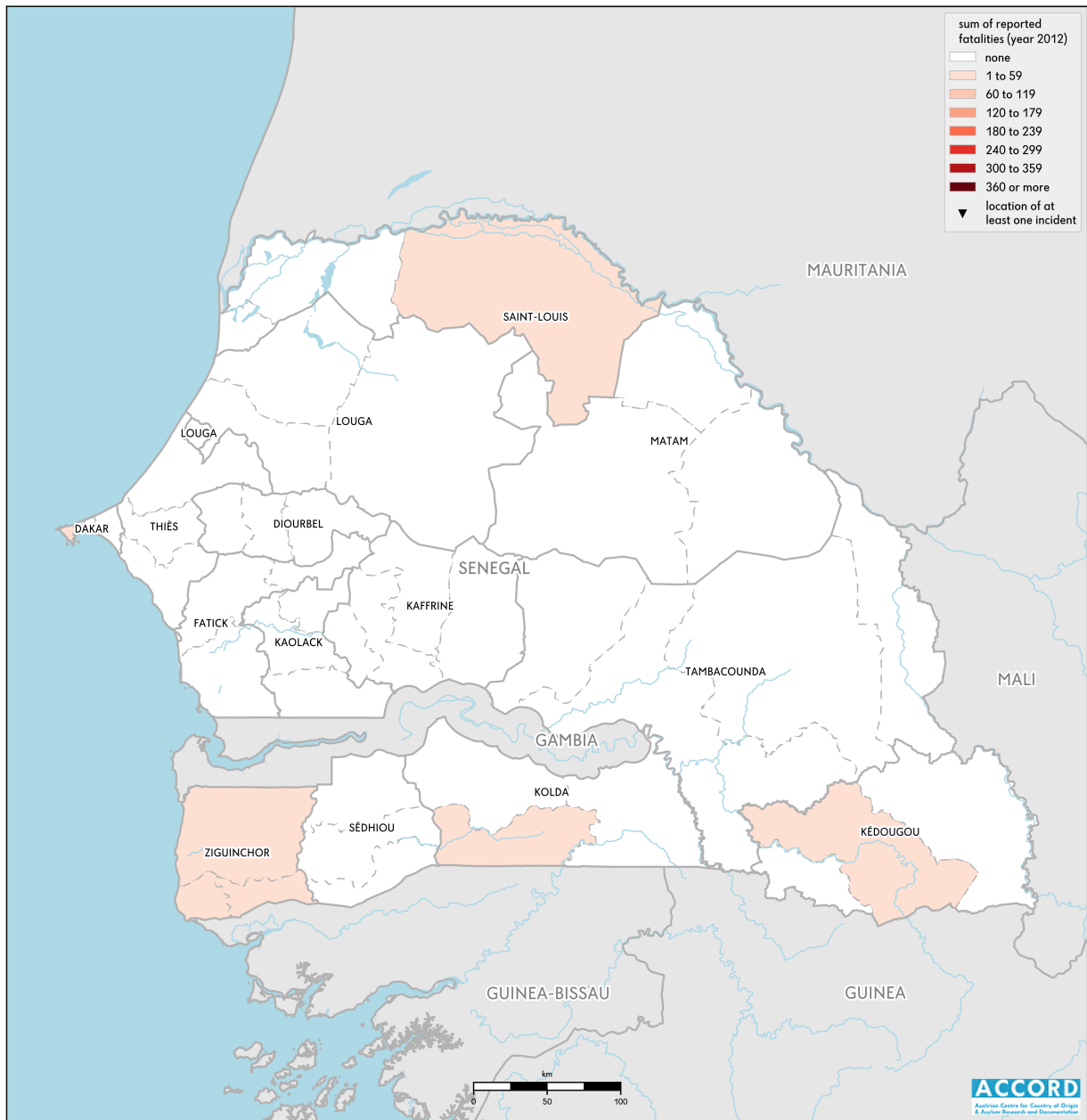


SENEGAL, YEAR 2012:

Update on incidents according to the Armed Conflict Location & Event Data Project (ACLED)
compiled by ACCORD, 3 November 2016



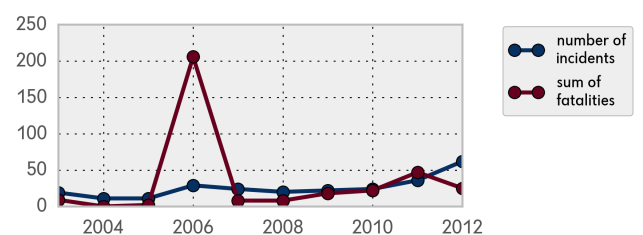
National borders: [GADM, November 2015a](#); administrative divisions: [GADM, November 2015b](#); incident data: [ACLED, undated](#); coastlines and inland waters: [Smith and Wessel, 1 May 2015](#)

Conflict incidents by category

category	number of incidents	sum of fatalities
riots/protests	33	10
battle	11	13
violence against civilians	8	2
strategic developments	7	0
remote violence	3	0
total	62	25

This table is based on data from the Armed Conflict Location & Event Data Project (datasets used: [ACLED, undated](#)).

Development of conflict incidents from 2003 to 2012



This graph is based on data from the Armed Conflict Location & Event Data Project (datasets used: [ACLED, undated](#)).

LOCALIZATION OF CONFLICT INCIDENTS

Note: The following list is an overview of the incident data included in the ACLED dataset. More details are available in the actual dataset (date, location data, event type, involved actors, information sources, etc.). In the following list, the names of event locations are taken from ACLED, while the administrative region names are taken from GADM data which serves as the basis for the map above.

In **Dakar**, 32 incidents killing 8 people were reported. The following locations were affected: **Dakar, Le Plateau**.

In **Kaffrine**, 1 incident killing 0 people was reported. The following location was affected: **Ndioum**.

In **Kolda**, 1 incident killing 4 people was reported. The following location was affected: **Sare Ndiaye**.

In **Kédougou**, 2 incidents killing 1 person were reported. The following location was affected: **Kedougou**.

In **Saint-Louis**, 1 incident killing 2 people was reported. The following location was affected: **Podor**.

In **Sédhiou**, 1 incident killing 0 people was reported. The following location was affected: **Casamance**.

In **Tambacounda**, 1 incident killing 0 people was reported. The following location was affected: **Touba**.

In **Thiès**, 6 incidents killing 0 people were reported. The following locations were affected: **Kayar, Thies**.

In **Ziguinchor**, 17 incidents killing 10 people were reported. The following locations were affected: **Affiniam, Baila, Banganga, Bignona, Boutowpa, Djibanar, Fanda, Sindian, Tenghori, Youtou, Ziguinchor**.

METHODOLOGY

The data used in this report was collected by the Armed Conflict Location & Event Data Project (ACLED). ACLED collects data on reported conflict events in selected African and Asian countries, Senegal being among them. ACLED researchers collect event data from a variety of sources and code them by date, location, agent, and event type. For further details on ACLED and for the full data, see www.acleddata.com und [Raleigh; Linke; Hegre, and Karlsen, 2010](#).

Based on these data, the Austrian Centre for Country of Origin & Asylum Research and Documentation (ACCORD) compiles updates on conflict incidents.

Incidents comprise the following categories: battle, headquarters or base established, non-violent strategic activities, riots/protests, violence against civilians, non-violent transfer of territory, remote violence. For details on these categories, please see

- ACLED – Armed Conflict Location & Event Data Project: Codebook, 2016
http://www.acleddata.com/wp-content/uploads/2016/01/ACLED_Codebook_2016.pdf
- ACLED – Armed Conflict Location & Event Data Project: User Guide, January 2016
http://www.acleddata.com/wp-content/uploads/2016/01/ACLED_User-Guide_2016.pdf

SOURCES

- ACLED – Armed Conflict Location & Event Data Project: ACLED Version 6 (1997 – 2015) standard file, undated
http://www.acleddata.com/wp-content/uploads/2016/01/ACLED-Version-6-All-Africa-1997-2015_dyadic-file.xlsx
- GADM – Global Administrative Areas: gadm28_levels.shp, Version 2.8, November 2015a
http://biogeo.ucdavis.edu/data/gadm2.8/gadm28_levels.shp.zip
- GADM – Global Administrative Areas: SEN_adm.zip, Version 2.8, November 2015b
http://biogeo.ucdavis.edu/data/gadm2.8/shp/SEN_adm.zip
- Raleigh, Clionadh; Linke, Andrew; Hegre, Håvard, and Karlsen, Joakim: "Introducing ACLED-Armed Conflict Location and Event Data", in: *Journal of Peace Research* (47(5) 2010), pp. 651–660
<http://jpr.sagepub.com/content/47/5/651.full.pdf+html>
- Smith, Walter H. F. and Wessel, Paul: Global Self-consistent Hierarchical High-resolution Geography (GSHHG), Version 2.3.4, 1 May 2015
<https://www.ngdc.noaa.gov/mgg/shorelines/data/gshhg/latest/>

DISCLAIMER

Most of the data collected by ACLED is gathered based on publicly available, secondary reports. It may therefore underestimate the volume of events. Fatality data particularly is vulnerable to bias and inaccurate reporting, and ACLED uses the most conservative estimate available. Furthermore, event data may be revised or complemented in future updates. The lack of information on an event in this report does not permit the inference that it did not take place. The boundaries and names displayed do not imply endorsement or acceptance by the Austrian Red Cross.

Cite as

- ACCORD – Austrian Centre for Country of Origin & Asylum Research and Documentation: Senegal, year 2012: Update on incidents according to the Armed Conflict Location & Event Data Project (ACLED), 28 November 2016