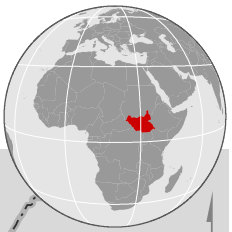


SOUTH SUDAN SITUATION : Regional overview of refugees from South Sudan

New arrivals since 15 Dec 2013 | as of 02 July 2015



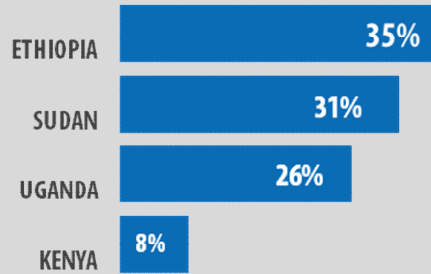
KEY FIGURES



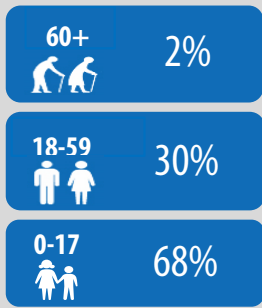
total displaced population
since 15 Dec 2013



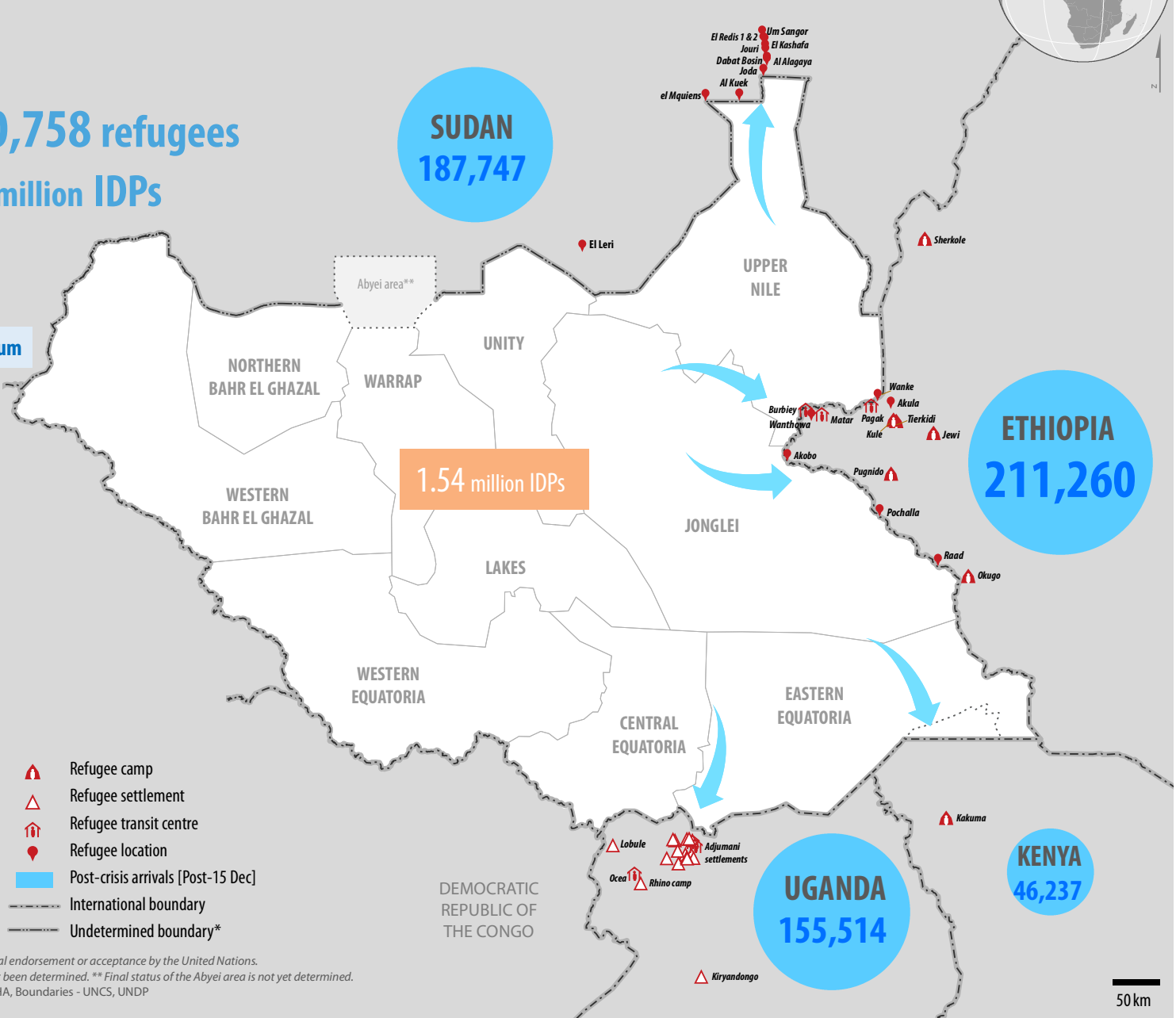
distribution of refugees by country of asylum



Age breakdown of registered refugees



The age-gender breakdown for refugees in Sudan is not yet available since UNHCR has only recently been granted access to formally register refugees.



The boundaries and names shown and the designations used on this map do not imply official endorsement or acceptance by the United Nations.
* Final boundary between the Republic of Sudan and the Republic of South Sudan has not yet been determined. ** Final status of the Abyei area is not yet determined.
Creation date: 06 July 2015 Sources: Refugee statistics - UNHCR, IDP statistics - UNOCHA, Boundaries - UNCS, UNDP
Feedback: UNHCR Regional Support Hub in Nairobi kenrgis@unhcr.org