

# SUDAN: White Nile State

## Refugee sites hosting new arrivals from South Sudan

16 - 29 February 2016

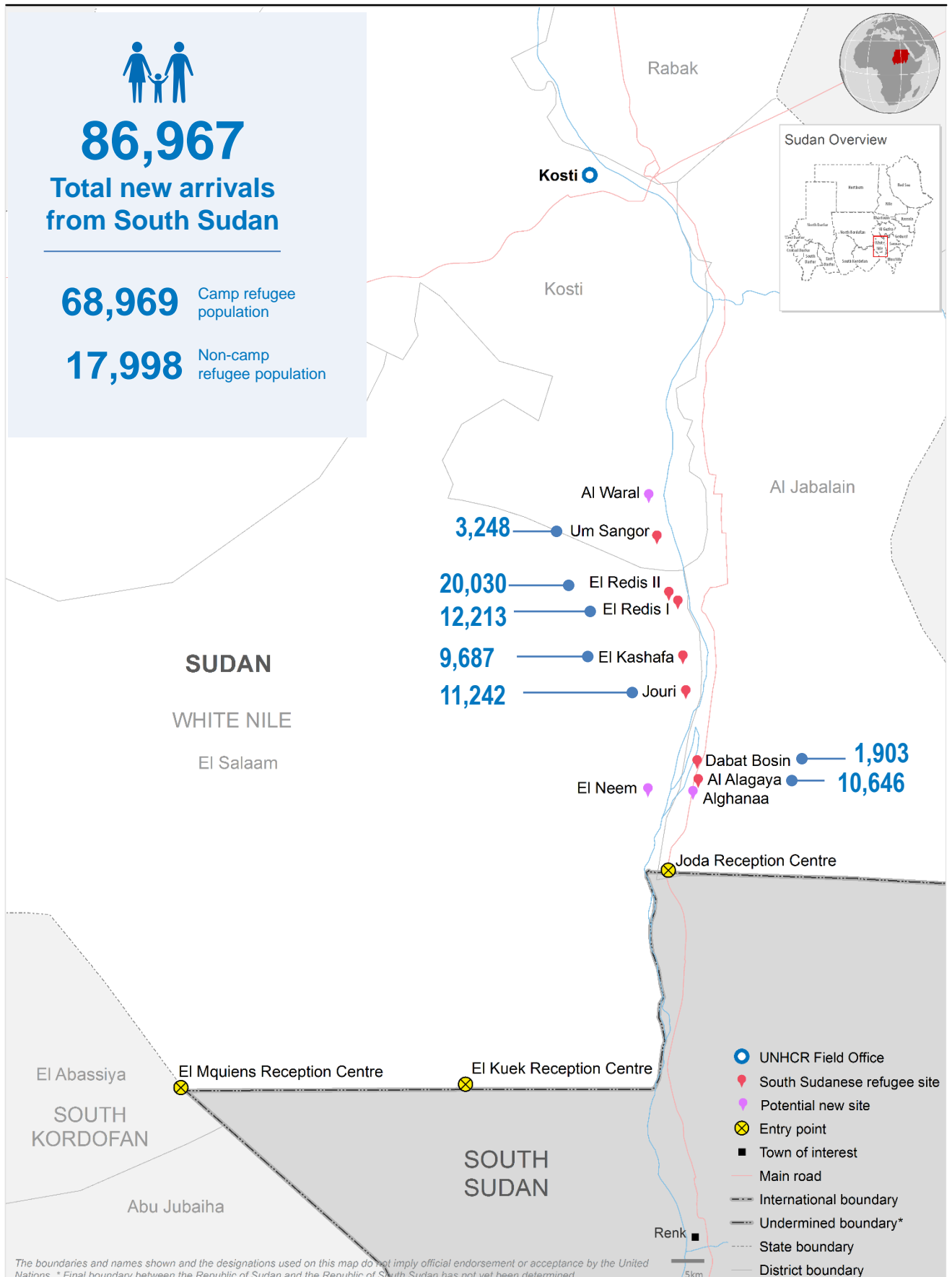


# 86,967

## Total new arrivals from South Sudan

**68,969** Camp refugee population

**17,998** Non-camp refugee population



The boundaries and names shown and the designations used on this map do not imply official endorsement or acceptance by the United Nations. \* Final boundary between the Republic of Sudan and the Republic of South Sudan has not yet been determined.