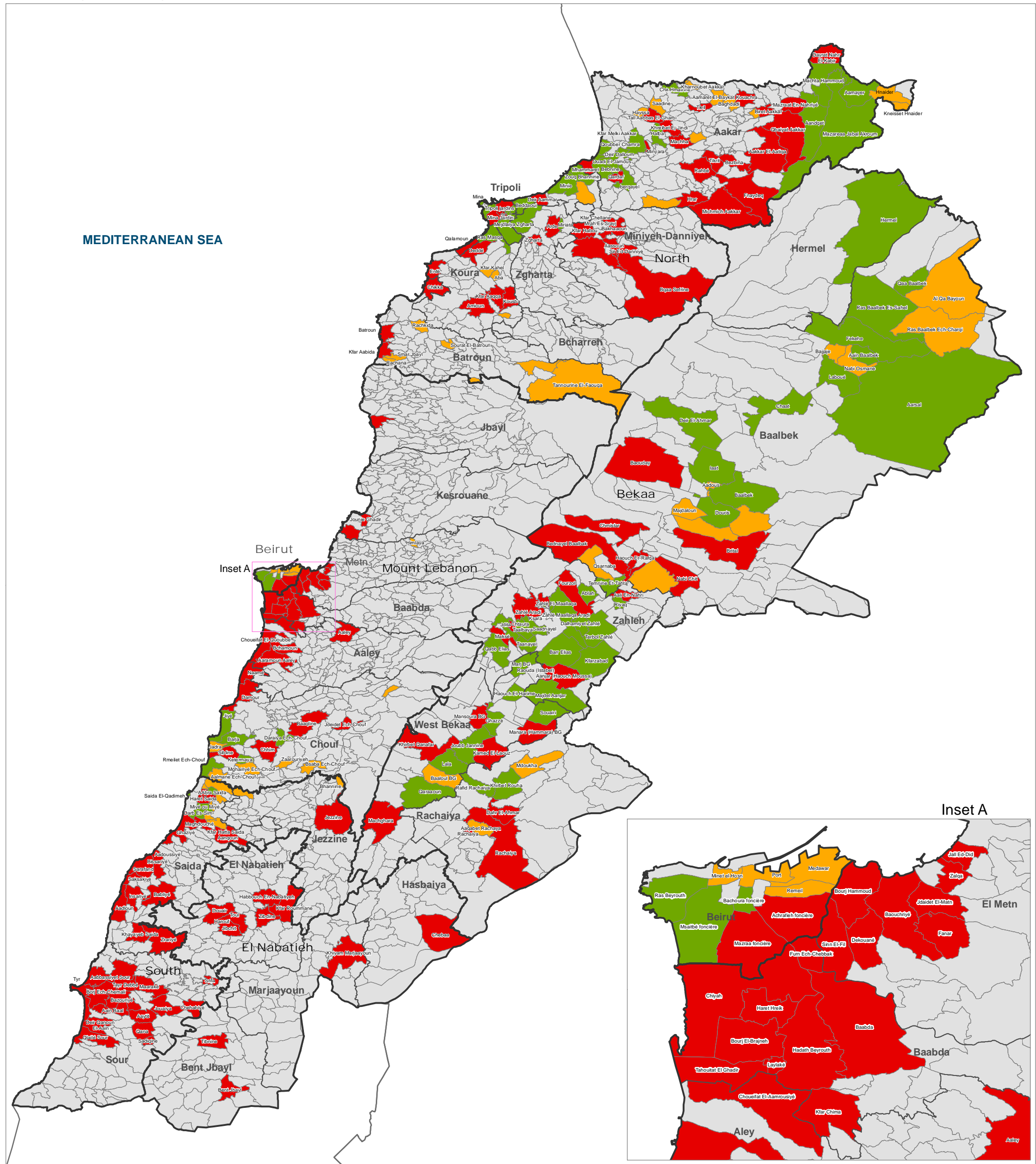


SYRIA REFUGEE RESPONSE

LEBANON WASH Sector Working Group

Implementation of Water and Sanitation Activities

January to July 2013



WASH Sector Working Group

UNHCR Francesca Coloni, coloni@unhcr.org;
 UNICEF David Adams, dadams@unicef.org.
 Data Collection Focal Point:
 UNICEF Fredrick Hanga, fhanga@unicef.org.



The boundaries, names, and designations used on this map do not imply official endorsement of the United Nations or UNHCR. All data used were the best available at the time of map production.

Data Sources:
 - UNHCR: Registered refugee location as of 15 August 2013.

- The WASH Sector Data is based on the 5W Matrix collected by the WASH sector group

GIS and Mapping by UNHCR.
 For more information and updates contact:
 Wali Ahadi, ahadi@unhcr.org

Map Produced: 26 Aug, 2013

- Governorate
- District
- Cadastral
- Most Vulnerable Population With Water and Sanitation Activities
- With No Water and Sanitation Activities
- Cadastral With Water & Sanitation Activities, but Not With Most Vulnerable Population