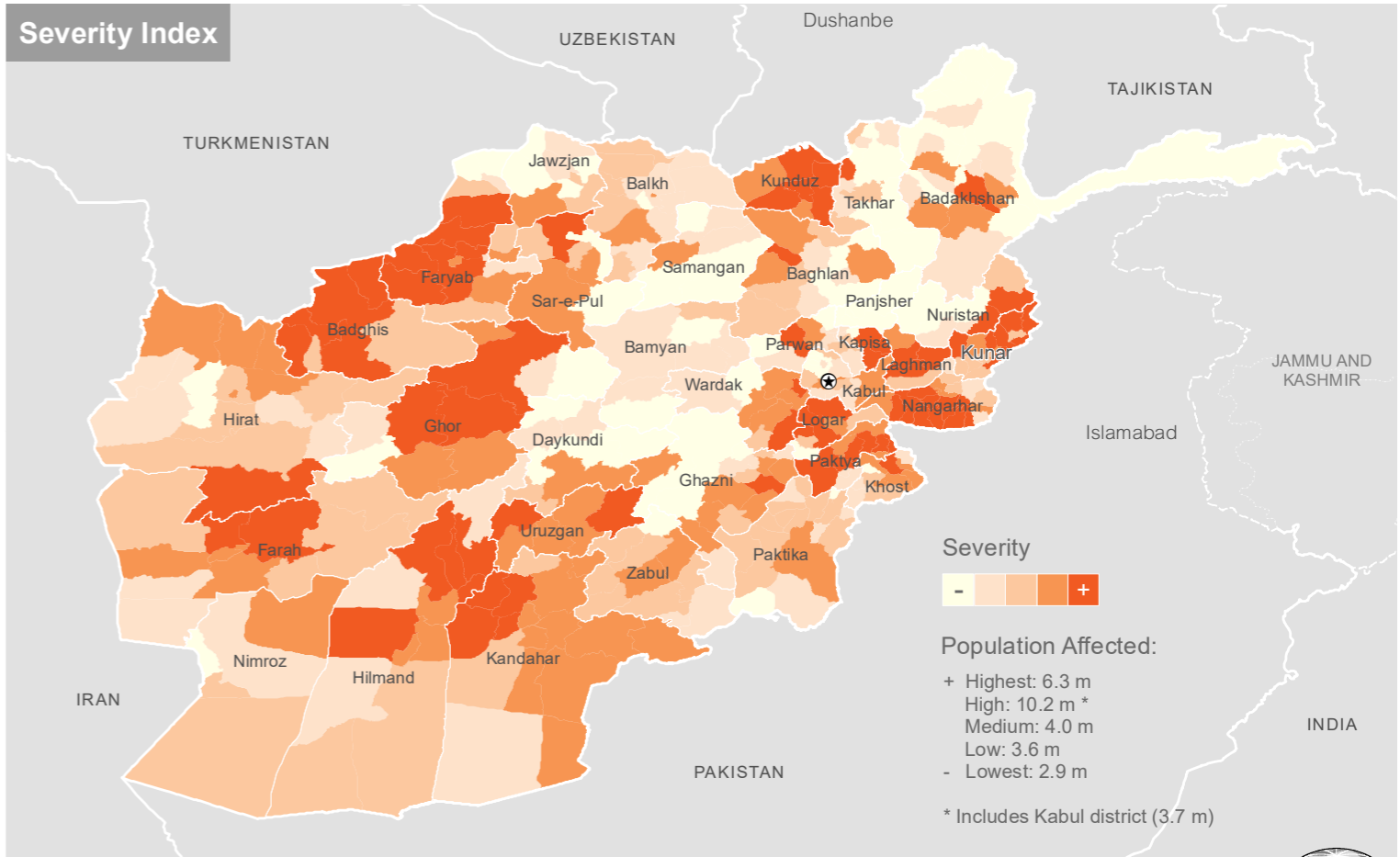
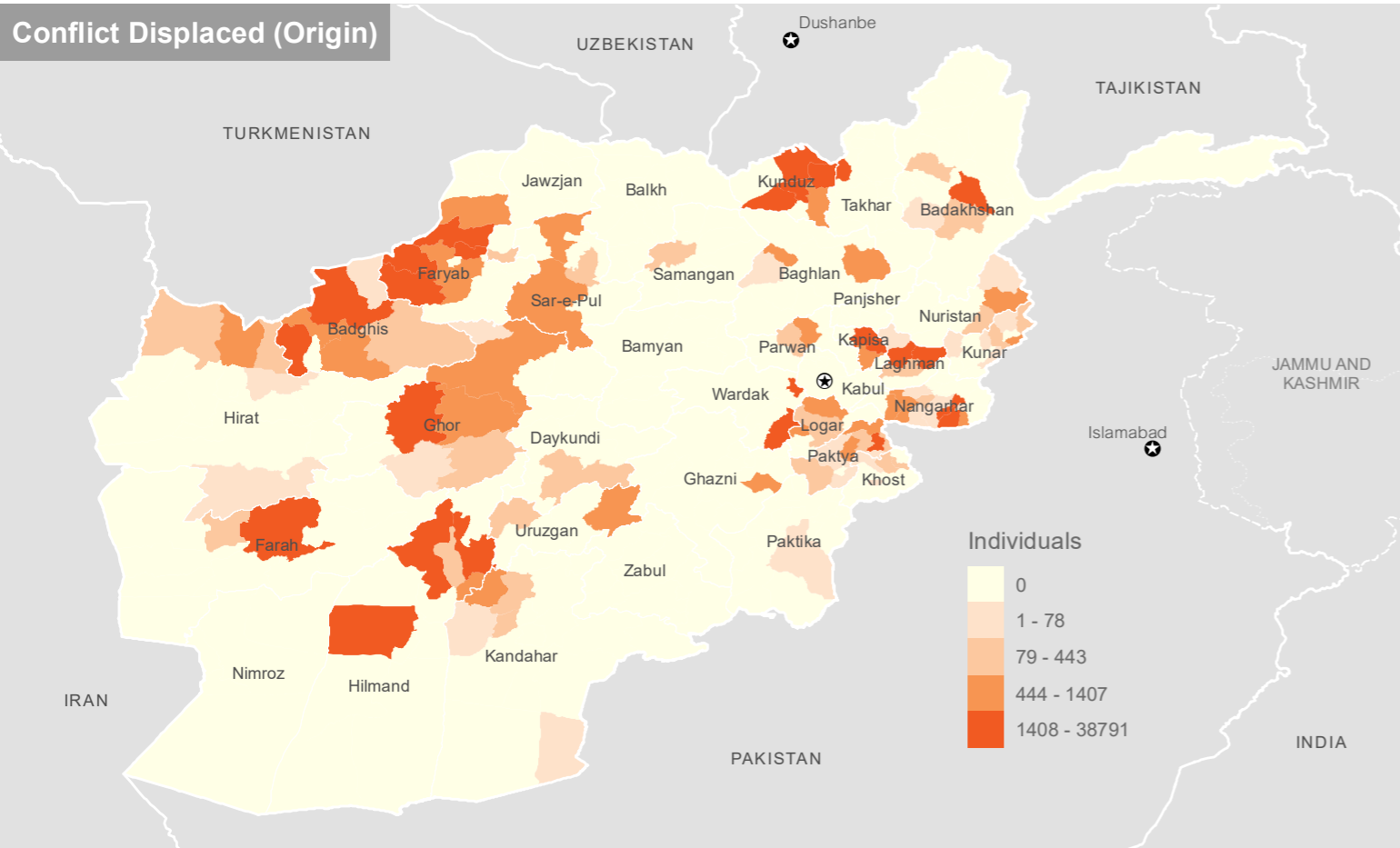
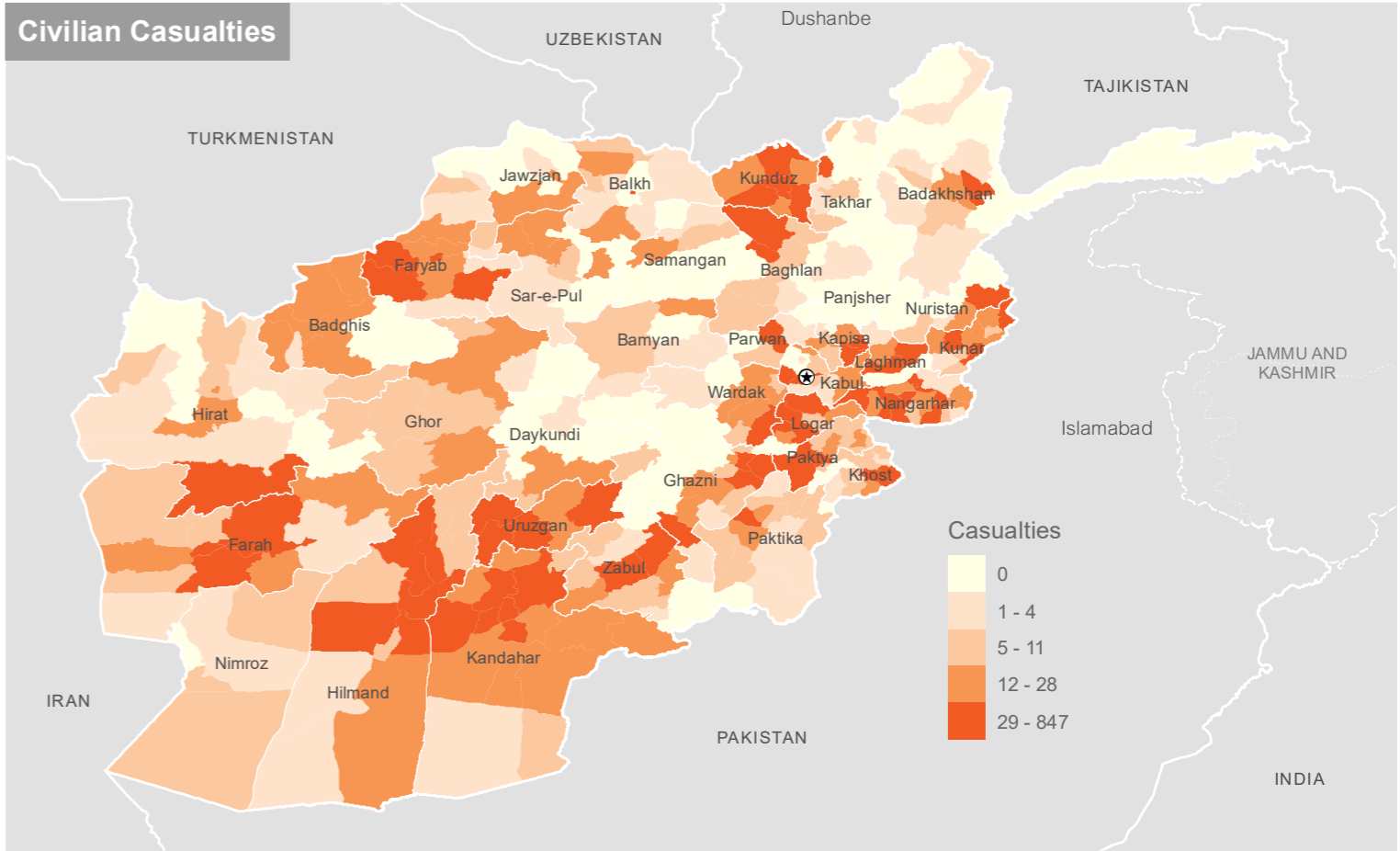
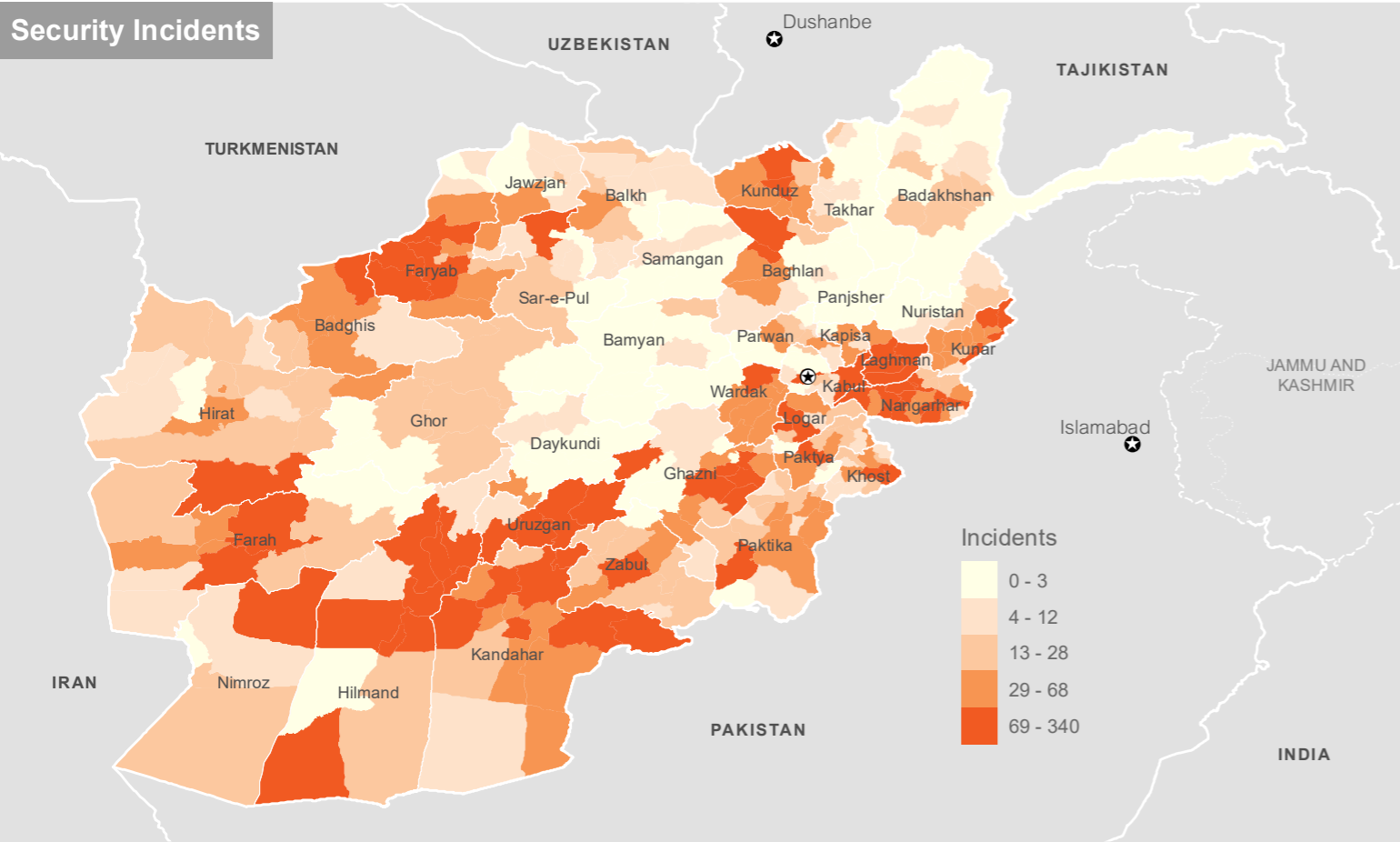


AFGHANISTAN 2016 HNO: Conflict Severity Index

Based on events from January to September 2015



This analysis uses three indicators to characterize the conflict at a district level. **Indicators:** All indicators are for the period 1 January to 30 September 2015. 1) Security incidents include the following types: abduction, air strike, armed clash, assassination, attempted assassination, IED detonated, intimidation, mine/UXO incident, stand-off attack, and suicide attack. 2) A civilian casualty is defined as a civilian killed or injured resulting directly or indirectly from conflict related violence. Some records of casualties were not able to be matched to a district boundary and, therefore, could not be reflected in the map of civilian casualties by district. 3) Conflict induced displacement represents the number of IDPs (individuals) by district of origin. **Analysis approach:** For each indicator each district is ranked according to the number of incidents, individuals or casualties. Therefore, each district is assigned a rank of 1 to 399. The analysis uses an Excel rank command (if more than one value has the same rank, then the top rank of that set of values is adopted). The average rank of the three indicators is then used to create an overall rank for the district. Percentile ranges (20th) is then used to divide the districts into 5 equal groups to create the index value of 1 (lowest) to 5 (highest).

Disclaimer: The designations employed and the presentation of material on this map do not imply the expression of any opinion whatsoever on the part of the Secretariat of the United Nations concerning the legal status of any country, territory, city or area or of its authorities, or concerning the delimitation of its frontiers or boundaries. Dotted line represents approximately the Line of Control in Jammu and Kashmir agreed upon by India and Pakistan. The final status of Jammu and Kashmir has not yet been agreed upon by the parties.

Date Printed: 21 November 2015 05:45 PM
Data Source(s): AGCH, UNHCR (IDP), UNAMA (Civilian Casualties), Varrios (Security).
Projection/Datum: Geographic/WGS-84
Feedback: ocha-afg@un.org
Website: <http://afg.humanitarianresponse.info>

