

SYRIA REFUGEE RESPONSE

LEBANON North Governorate - Tripoli T5

Education Working Group

Implementation of Education Activities January 2014 to August 2014

WG Members implementing Non-formal Education - ALP, ECE, Basic NFE



Education Sector Working Group
 UNHCR Kerstin Karlstrom, karlstro@unhcr.org
 UNICEF Simone Vis, svis@unicef.org
 FIELD CO-ORDINATORS
 Vanan Mandjiki, mandjiki@unhcr.org
 Constantijn Wouters, cwouters@unicef.org

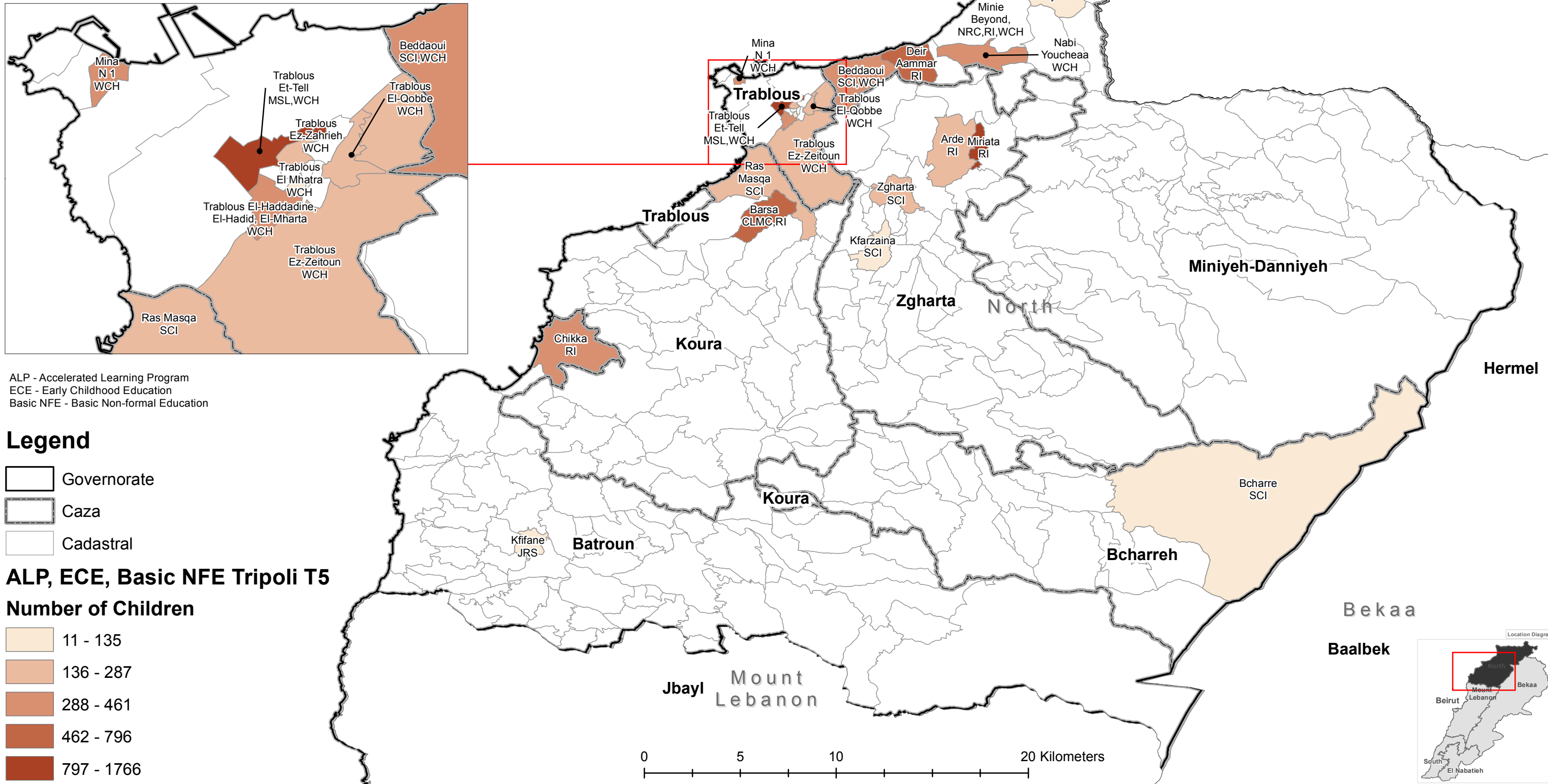


Data Sources:
 - The Education Sector Data is based on the Activity Info Reporting.

All data used were the best available at the time of map production.

The boundaries, names, and designations used on this map do not imply official endorsement or acceptance by the United Nations, UNICEF or UNHCR.

GIS and Mapping by UNHCR and UNICEF
 For more information and updates contact
 Aoife Long, along@unicef.org



ALP - Accelerated Learning Program
 ECE - Early Childhood Education
 Basic NFE - Basic Non-formal Education

Legend

- Governorate
- Caza
- Cadastral

ALP, ECE, Basic NFE Tripoli T5

Number of Children

- 11 - 135
- 136 - 287
- 288 - 461
- 462 - 796
- 797 - 1766

