

# SYRIA REFUGEE RESPONSE

## LEBANON South and El Nabatieh Governorate

### Education Working Group

#### Implementation of Education Activities January to August 2014

#### WG Members implementing Non-formal Education - ALP, ECE, Basic NFE



Education Sector Working Group  
 UNHCR Kerstin Karlstrom, karlstro@unhcr.org  
 UNICEF Simone Vis, svis@unicef.org  
 FIELD CO-ORDINATOR  
 Heba Dabliz, dabliz@unhcr.org



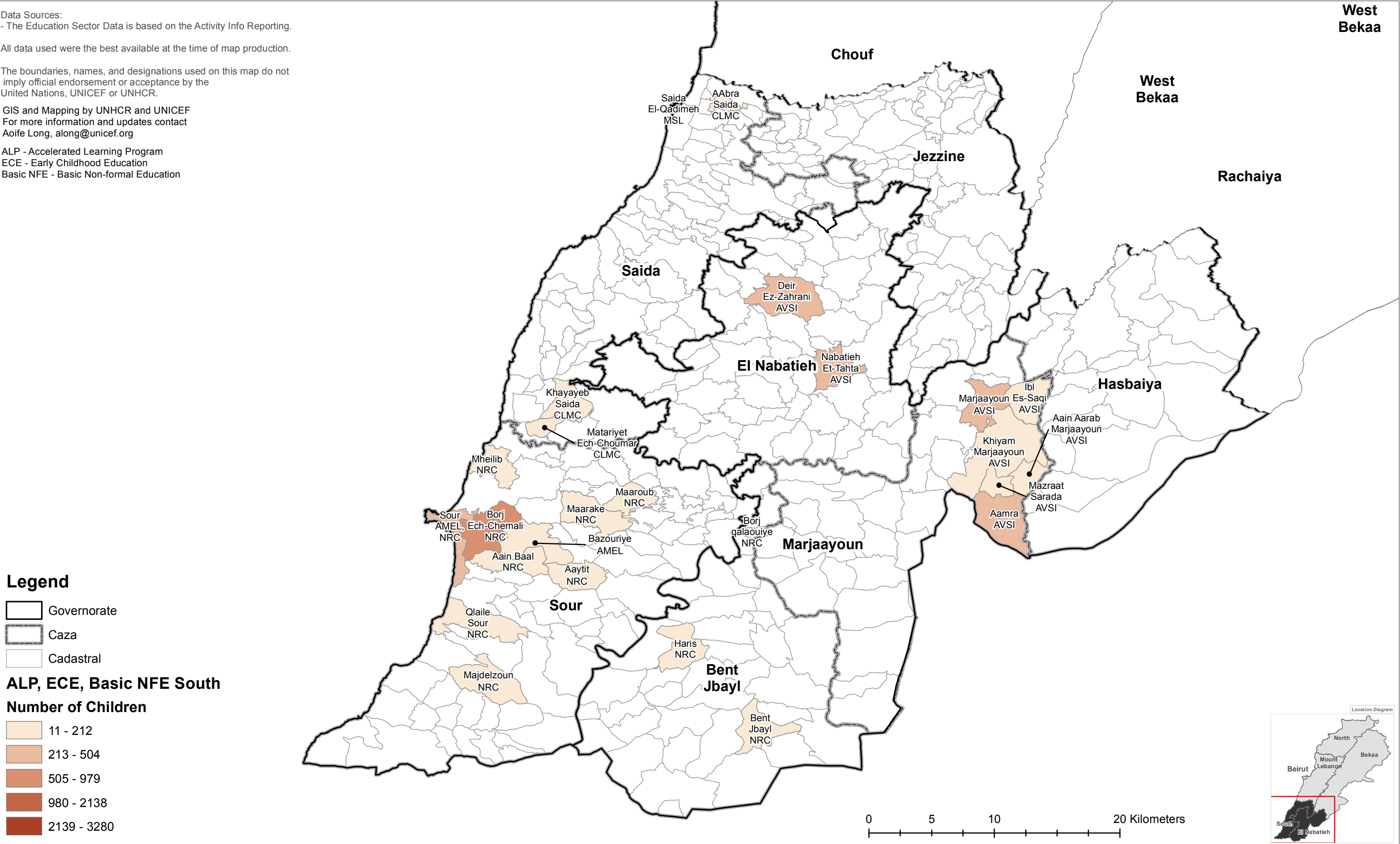
Data Sources:  
 - The Education Sector Data is based on the Activity Info Reporting.

All data used were the best available at the time of map production.

The boundaries, names, and designations used on this map do not imply official endorsement or acceptance by the United Nations, UNICEF or UNHCR.

GIS and Mapping by UNHCR and UNICEF  
 For more information and updates contact  
 Aoife Long, along@unicef.org

ALP - Accelerated Learning Program  
 ECE - Early Childhood Education  
 Basic NFE - Basic Non-formal Education



West Bekaa

Chouf

West Bekaa

Jezzine

Rachaiya

Saida

El Nabatieh

Hasbaiya

Marjaayoun

Sour

Bent Jbayl

**Legend**

- Governorate
- Caza
- Cadastral

**ALP, ECE, Basic NFE South**

**Number of Children**

- 11 - 212
- 213 - 504
- 505 - 979
- 980 - 2138
- 2139 - 3280

