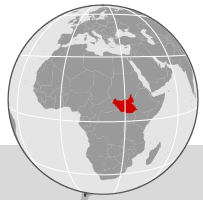


# South Sudan: Registered refugees by nationality and location (state)

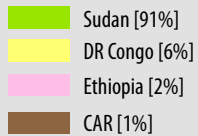
As of 01 January 2015



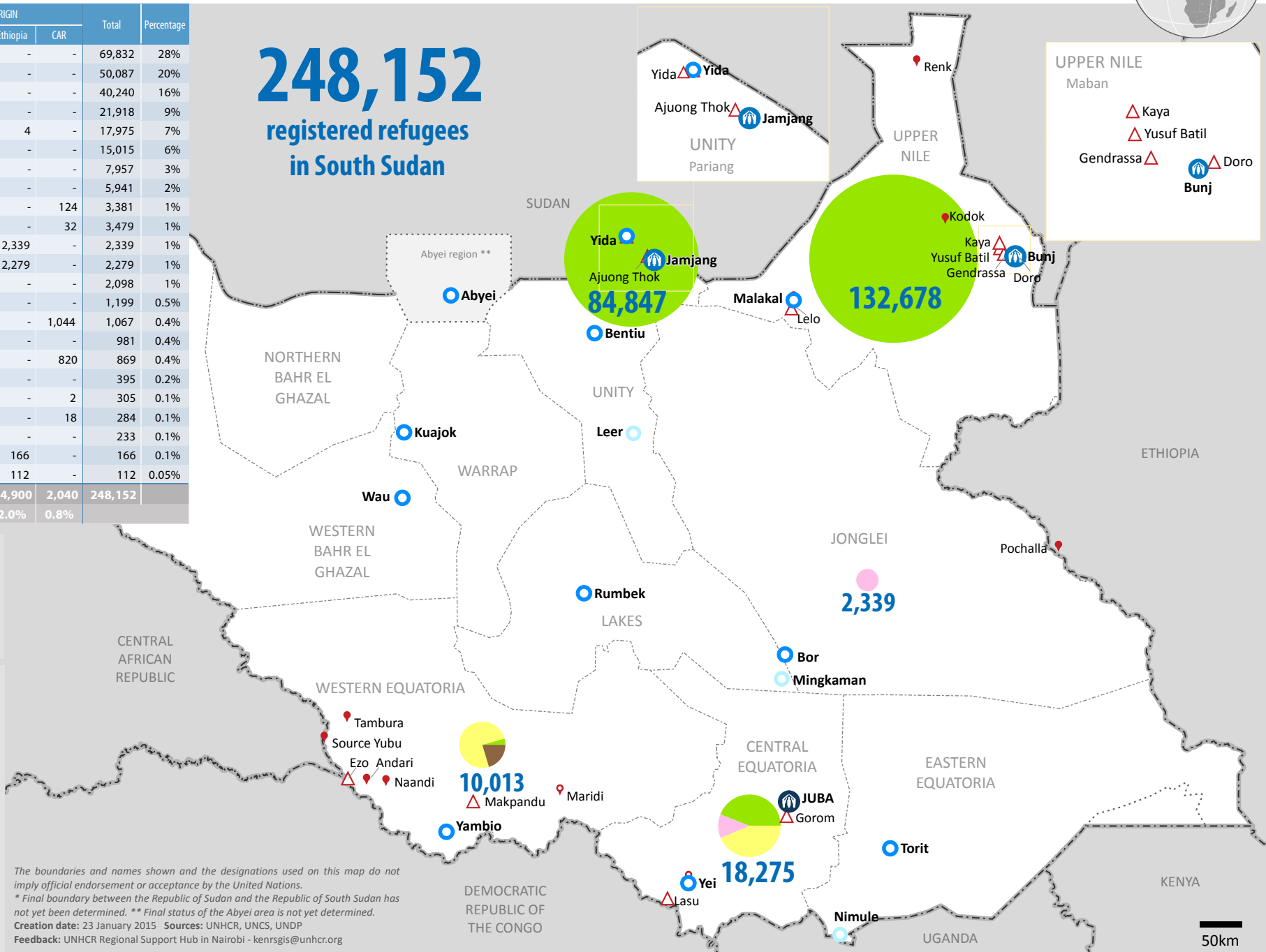
Refugee Location	COUNTRY OF ORIGIN				Total	Percentage
	Sudan	DRC	Ethiopia	CAR		
Yida	69,832	-	-	-	69,832	28%
Doro	50,087	-	-	-	50,087	20%
Yusuf Batil	40,240	-	-	-	40,240	16%
Kaya	21,918	-	-	-	21,918	9%
Gendrassa	17,971	-	4	-	17,975	7%
Ajuong Thok	15,015	-	-	-	15,015	6%
Lasu	12	7,945	-	-	7,957	3%
Juba	5,941	-	-	-	5,941	2%
Makpandu	38	3,219	-	124	3,381	1%
Ezo	-	3,447	-	32	3,479	1%
Pochalla	-	-	2,339	-	2,339	1%
Gorom	-	-	2,279	-	2,279	1%
Yei	2,098	-	-	-	2,098	1%
Kodok	1,199	-	-	-	1,199	0.5%
Source Yubu	-	23	-	1,044	1,067	0.4%
Lelo	981	-	-	-	981	0.4%
Tambura	-	49	-	820	869	0.4%
Maridi	395	-	-	-	395	0.2%
Andari	-	303	-	2	305	0.1%
Naandi	-	266	-	18	284	0.1%
Morobo	-	233	-	-	233	0.1%
Renk	-	-	166	-	166	0.1%
Malakal	-	-	112	-	112	0.05%
<b>Total</b>	<b>225,727</b>	<b>15,485</b>	<b>4,900</b>	<b>2,040</b>	<b>248,152</b>	
<b>Percentage</b>	<b>91.0%</b>	<b>6.2%</b>	<b>2.0%</b>	<b>0.8%</b>		

**248,152**  
registered refugees  
in South Sudan

### Breakdown by country of origin



- UNHCR Country Office
- UNHCR Sub Office
- UNHCR Field Office
- UNHCR Field Unit
- Refugee settlement
- Refugee location
- Urban refugee location
- International boundary
- Undetermined boundary\*
- State boundary



The boundaries and names shown and the designations used on this map do not imply official endorsement or acceptance by the United Nations.  
 \* Final boundary between the Republic of Sudan and the Republic of South Sudan has not yet been determined. \*\* Final status of the Abyei area is not yet determined.  
 Creation date: 23 January 2015 Sources: UNHCR, UNCS, UNDP  
 Feedback: UNHCR Regional Support Hub in Nairobi - kenrgis@unhcr.org