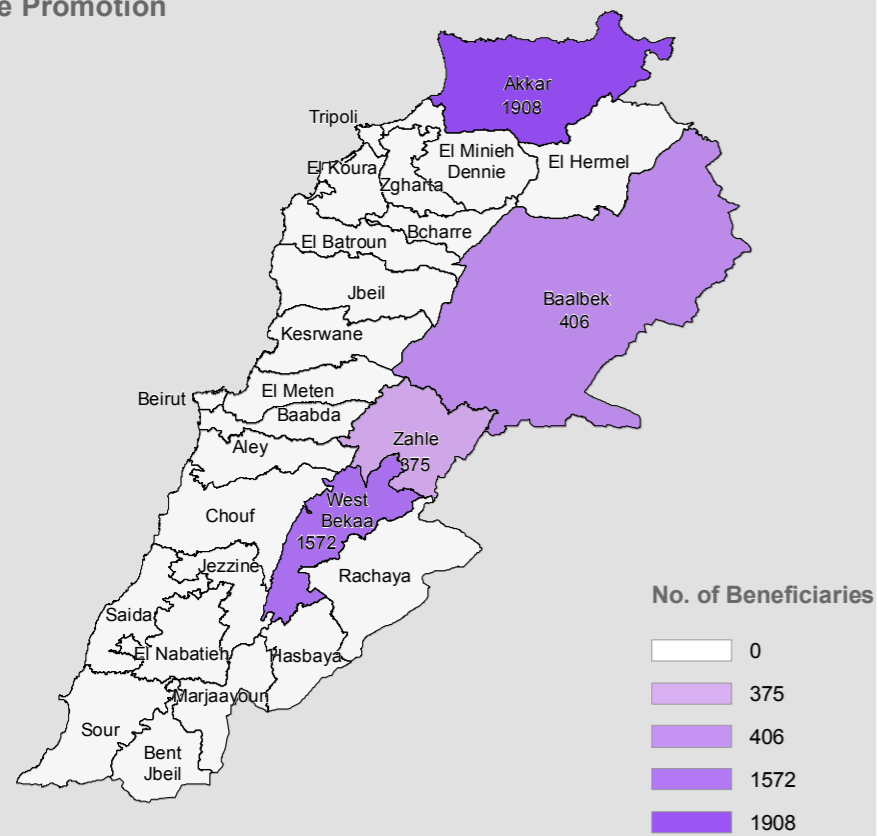


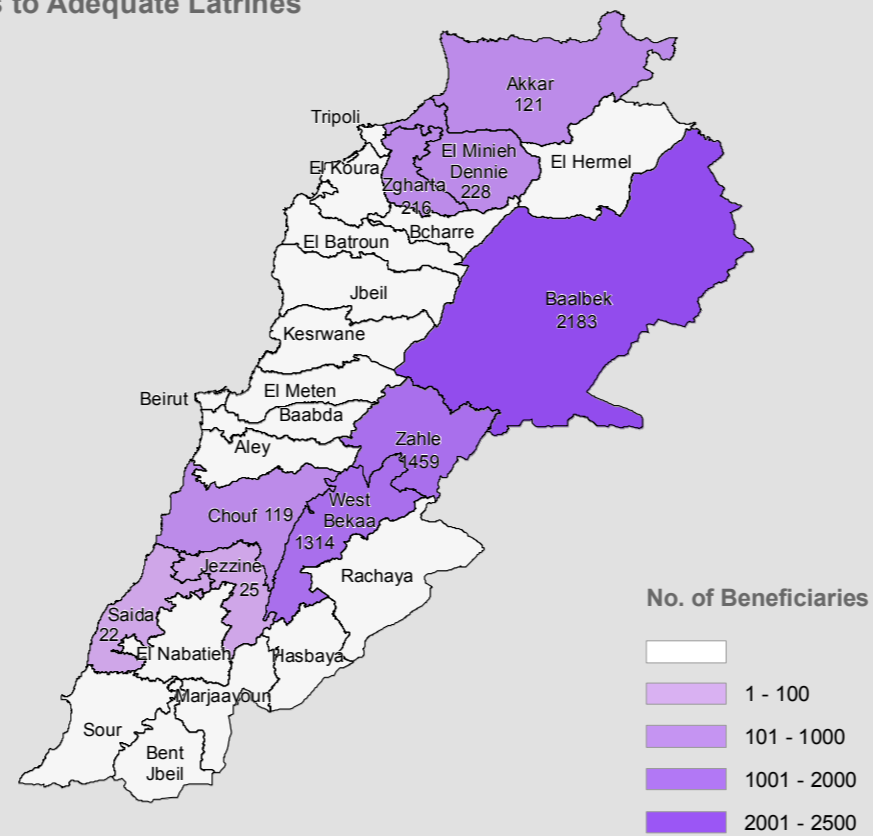
# SYRIA REFUGEE RESPONSE

## LEBANON. Selected WASH Sector Activities Reached During June 2013

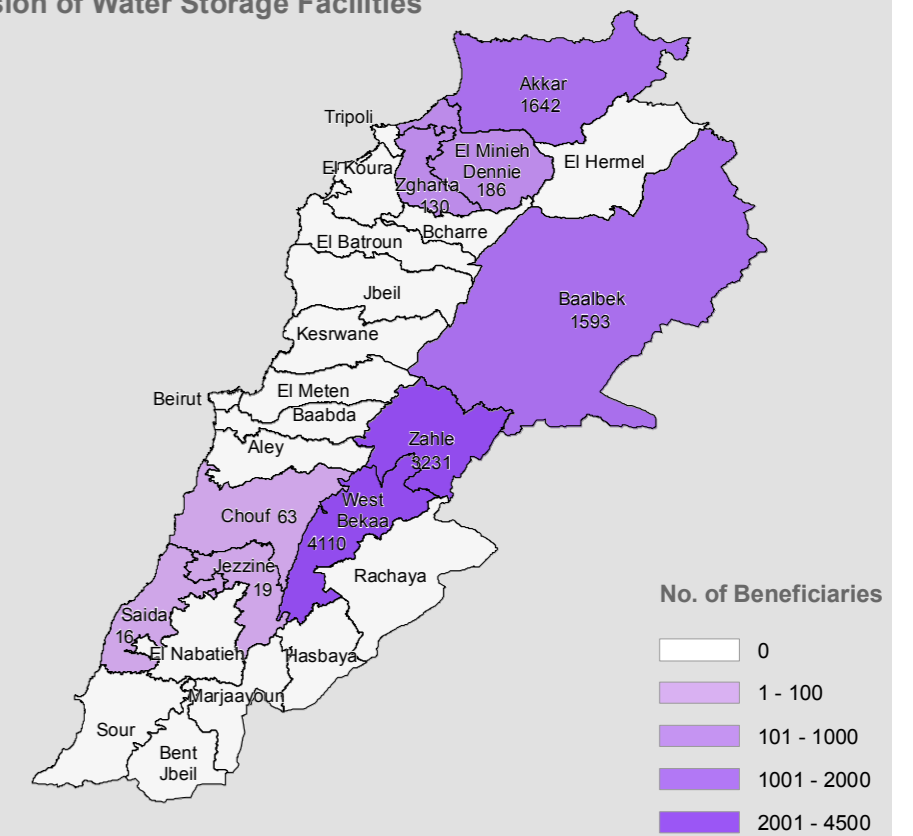
### Hygiene Promotion



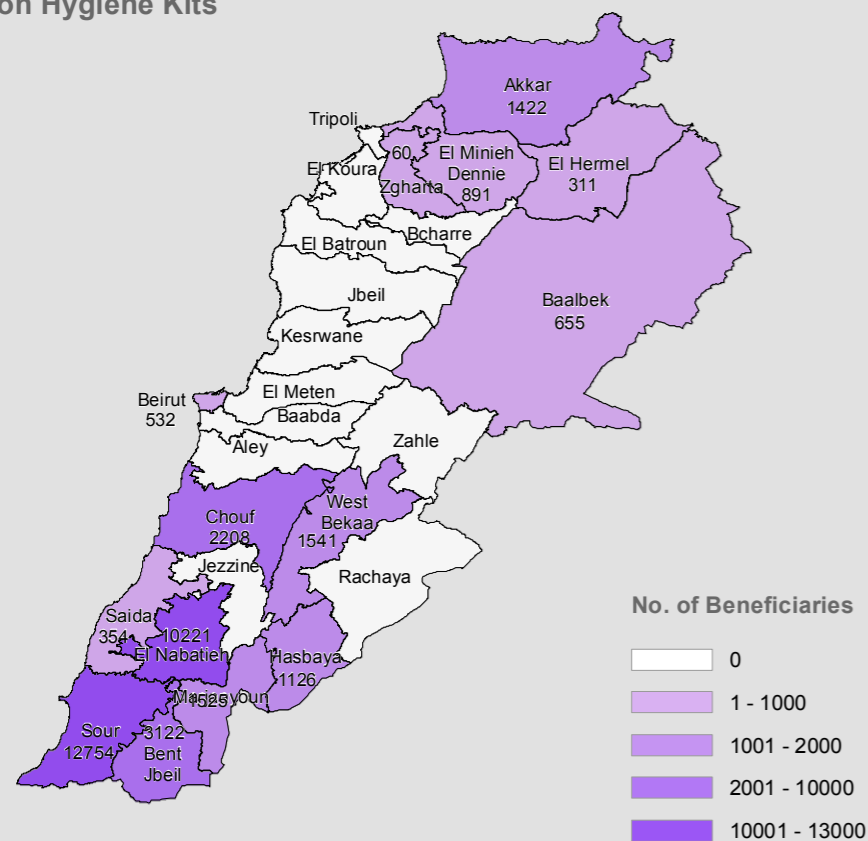
### Access to Adequate Latrines



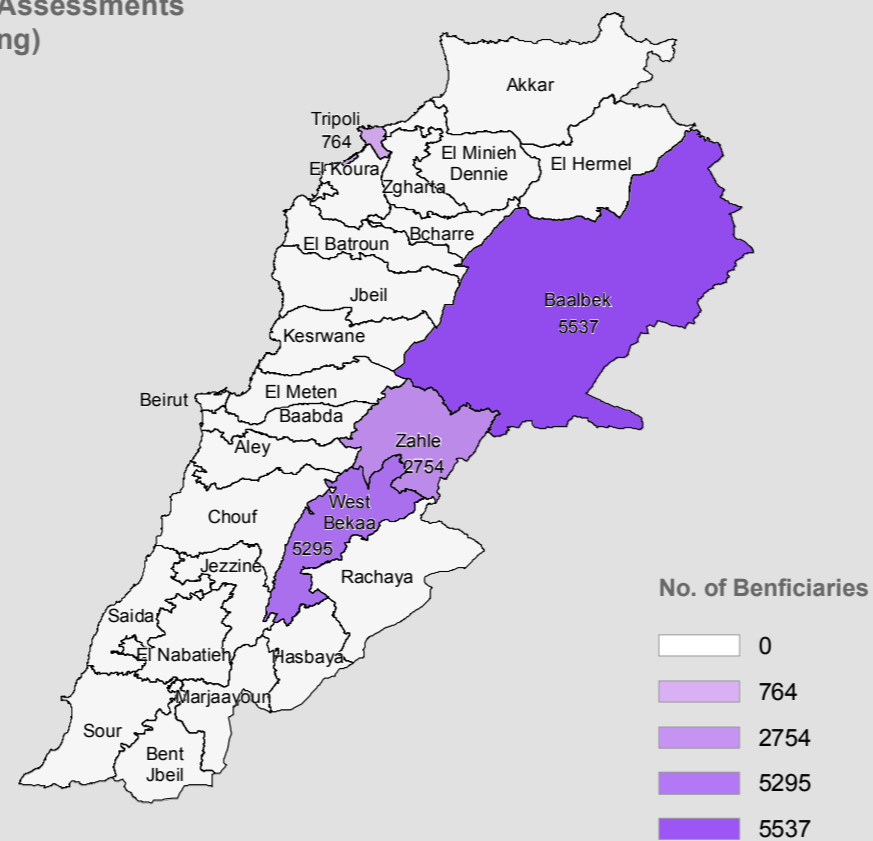
### Provision of Water Storage Facilities



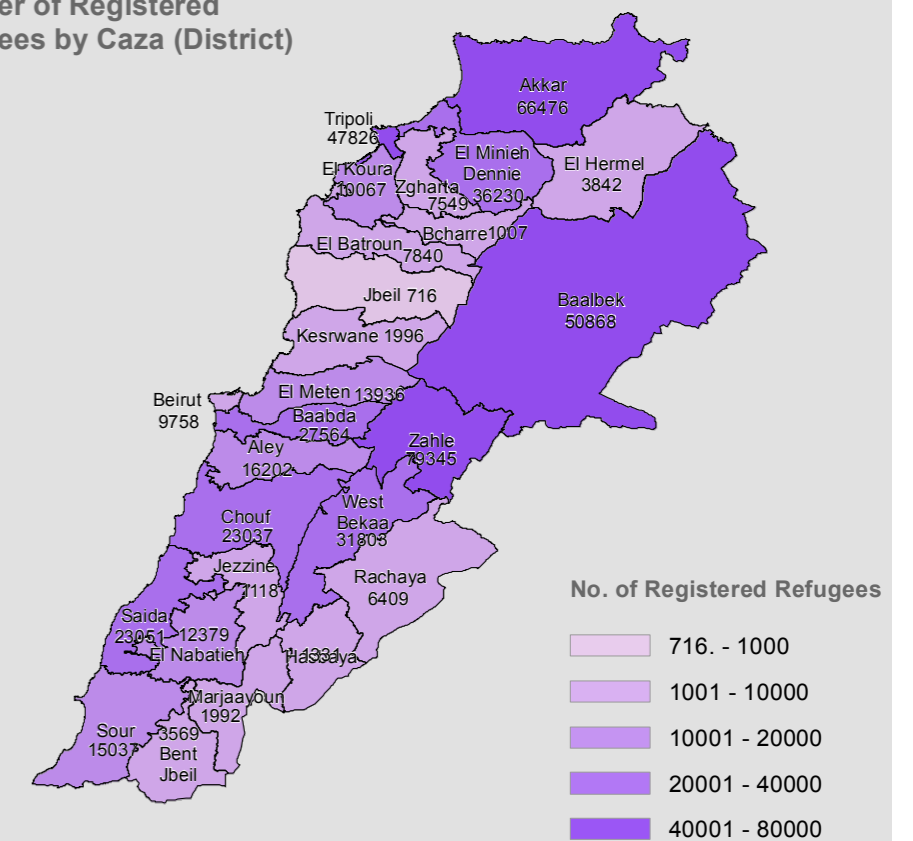
### Provision Hygiene Kits



### WASH Assessments (Ongoing)



### Number of Registered Refugees by Caza (District)



0 50 100 200 KM

This information is based on WASH Partners reporting to the WASH Activities Matrix WASH Sector Working Group - UNHCR Pankaj Kumar Singh, singhpa@unhcr.org; David Adams, dadams@unicef.org. Data collection focal point for the sector/UNICEF Fredrick Hanga, fhanga@unicef.org. UNHCR Registered refugees figures - Salam Shahin shahin@unhcr.org. GIS and Mapping by UNHCR. For more information and updates, contact: Rodolphe Ghossoub, ghossoub@unhcr.org



The boundaries, names, and designations used on this map do not imply official endorsement of the United Nations or UNHCR. All data used were the best available at the time of map production. Boundaries by the National Physical Master Plan for the Lebanese Territory (NPMP/PT) 2005. The WASH activities data for June 2013 by UNHCR. The registered refugee data as of 11 July 2013 by UNHCR.

