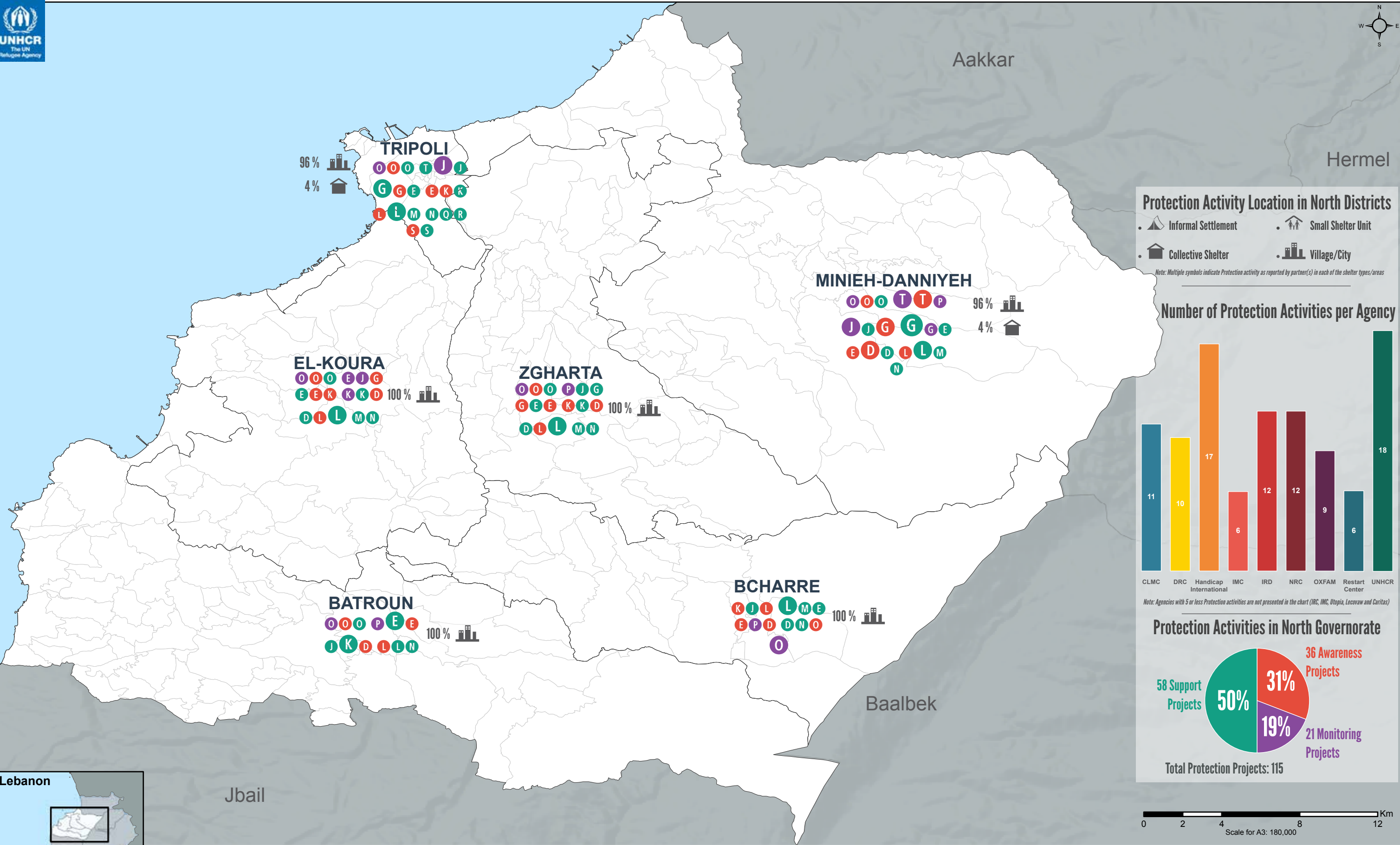


Lebanon - North Governorate

3W Protection Sector Summary for Tripoli + T5 Operational Area

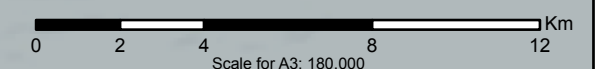
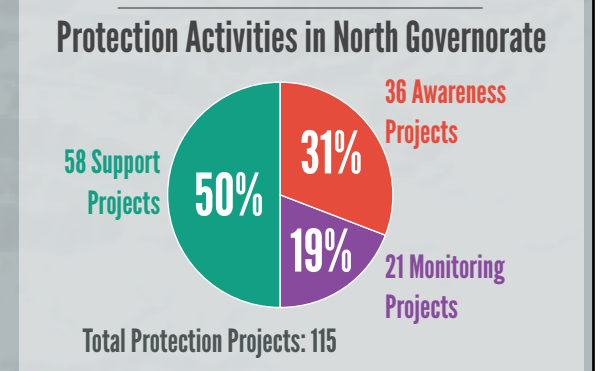
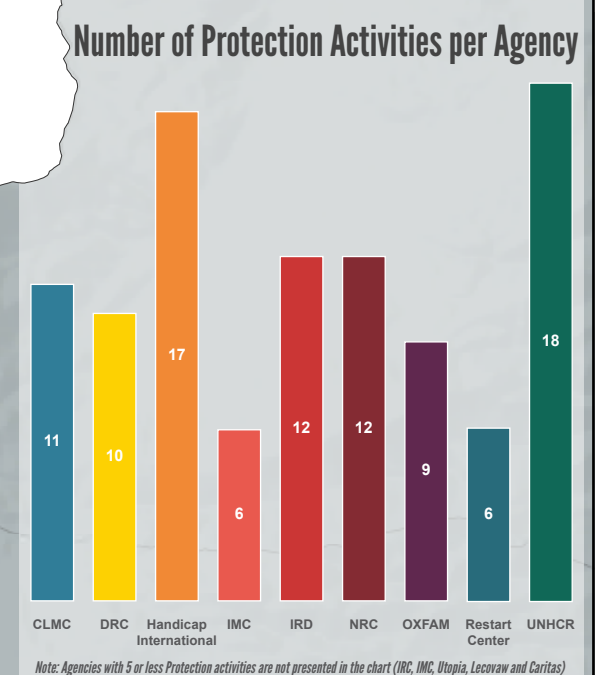
For Humanitarian Use Only
DRAFT - Work in Progress
 Production Date: 13 November 2014



Protection Activity Location in North Districts

- Informal Settlement
- Small Shelter Unit
- Collective Shelter
- Village/City

Note: Multiple symbols indicate Protection activity as reported by partner(s) in each of the shelter types/areas



Implementing Agency:					Activity Type:	Activity per Agency:	Cadastre Boundary
OXFAM	DRC	IMC	IRC	UTOPIA	Monitor	9	District Boundary
IRD	CLMC	Restart Center	Caritas	UNRWA	Awareness	1	
NRC	Handicap International	UNHCR	Lecovaw		Support		

Data Sources:
 - Administrative boundaries: GADM, OSM
 - Protection 4W Matrix (Activity types were grouped into three categories):
 • Monitor: management/activities in community centres, registration/recording, systematic/structures protection monitoring and analysis
 • Awareness: legal awareness session, information/awareness sessions on access to services for community
 • Support: legal aid/individual counseling, referral and support to other persons with specific needs

Coordinate System: WGS84
 File: REACH_LBN_Map_NorthGovernorate_3wProtectionMappingTripoliT5_13Nov2014_A3
 Contact: reach.mapping@impact-initiatives.org
 Note: Data, designations and boundaries contained on this map are not warranted to be error-free and do not imply acceptance by the REACH partners, associated, donors mentioned on this map.

