



## UNHCR/WFP Joint Assessment Mission Report

### Assistance to the Refugees from Bhutan in Nepal

(18 June-08 July 2012)



## Contents

Acknowledgements.....	3
Acronyms .....	4
Executive Summary: Findings and Recommendations .....	6
Mission recommendations: .....	8
Background and Context .....	10
Methodology .....	12
Refugee Numbers, Protection, and Durable Solutions .....	13
Food Security .....	17
Refugee Welfare .....	20
Health, Nutrition, and Sanitation .....	22
Logistics .....	25

### **Acknowledgements**

The Joint Assessment Mission team is grateful to the Government of Nepal for facilitating the Mission and providing an opportunity to review the findings with them both at the field level and in Kathmandu. The team acknowledges the cooperation and assistance received from UNHCR and WFP staff in Kathmandu and Damak, who prepared a comprehensive information package containing reference documents and other relevant material. The team is grateful for the candid and insightful inputs received from all key informants, both refugees and residents of host communities.

## Acronyms

AIDS	Acquired Immune Deficiency Syndrome
AMDA	Association of Medical Doctors of Asia
APF	Armed Police Force
BCC	Behaviour Change Communication
BRCF	Bhutanese Refugee Children Forum
BRWF	Bhutanese Refugee Women Forum
CBDP / TSI	Community Based Development Programme / Transitional Solutions Initiative
CBO	Community Based Organization
CDO	Chief District Officer
CFUG	Community Forest Users' Group
CHW	Community Health Workers
CMC	Camp Management Committee
CMO	Camp Management Officer
CQS	Central Quality Surveillance
CWT	Community Watch Team
DPHO	District Public Health Officer
ECHO	European Community Humanitarian Office, European Commission
ECW	Enhanced Commitment to Women
EDP	Extended Delivery Point
FBM	Food Basket Monitoring
FDP	Final Delivery Point
GDP	Gross Domestic Product
GoN	Government of Nepal
HN	Happy Nepal
HIS	Health Information System
HIV	Human Immune Deficiency Virus
IDP	Internally Displaced Persons
IOM	International Organization for Migration
IP	Implementing Partner
IYCF	Infant and Young Child Feeding
JAM	Joint Assessment Mission
LDC	Less Developed Country
LWF	Lutheran World Federation
MCH	Mother and Child Health
MoHP	Ministry of Health and Population
MoU	Memorandum of Understanding
NBA	Nepal Bar Association
NFI	Non-Food Item
NGO	Non-Governmental Organizations
NUCRA	National Unit for the Coordination of Refugee Affairs
ODOC	Other Direct Operational Costs
OPD	Out-Patient Department
PDM	Post Distribution Monitoring
PGP	Pot-Gardening Programme
PRRO	Protracted Relief and Recovery Operation
RCU	Refugee Coordination Unit
SADG	Social Awareness Development Group
SFP	Supplementary Feeding Programme
SGBV	Sexual and Gender-Based Violence
SSH	Sub-Sector Head

TB	Tuberculosis
TOT	Training of Trainers
TPO	Transcultural Psychosocial Organization
UNCT	United Nations Country Team
VT	Vocational Training
WatSan	Water and Sanitation
WFP	World Food Programme
WHO	World Health Organization
WSB	Wheat Soya Blend (fortified)
YFC	Youth Friendly Centre

## **Executive Summary: Findings and Recommendations**

Following the enforcement of restrictive and discriminatory citizenship laws in Bhutan, over 100,000 refugees from Bhutan fled to Nepal in the early 1990s, where they were recognized on a prima facie basis by the Government of Nepal (GoN). The refugees from Bhutan were originally settled in seven refugee camps in south-eastern Nepal, where the GoN and UNHCR provided them with basic humanitarian assistance and international protection, in cooperation with other national and international partners, including WFP. The Government of Nepal (GoN) and local communities have generously hosted refugees from Bhutan since their arrival two decades ago, despite their own limited resources.

To assess the situation in the camps and the assistance provided to the refugees, Joint Assessment Missions (JAMs) have been conducted periodically by UNHCR and WFP with assistance from the Government of Nepal, the implementing/cooperating partners, and NGOs. The 2012 Joint Assessment Mission was held during June 2012. Representatives of UNHCR and WFP conducted field visits in the camps, accompanied by observers from donors (ECHO, EU, and the US Embassy). Findings and recommendations were presented to the Country Directors of UNHCR and WFP in Kathmandu and then to the Government of Nepal.

The most significant change since the last Joint Assessment Mission (2008) has been the scaling up of the resettlement process, which commenced in 2007. As of 31 May 2012, more than 65,000 refugees have been resettled to third countries and the camp population has been reduced to 48,640 persons. With the current rate of resettlement departures of approximately 12,000 to 18,000 per year for the next years, it is projected that less than 10,000 refugees from Bhutan will remain in Nepal in five years' time.

Resettlement continues to be the only viable durable solution for these refugees, as voluntary repatriation has not yet been possible and local integration is not an option. Discussions have been held between UNHCR and the Government of Bhutan to allow refugees to be considered for voluntary repatriation on a humanitarian basis, but this has not yet been possible to implement.

The other significant change since the previous JAM in 2008 has been the consolidation of the remaining refugee population from seven camps into two camps. In December 2010, the GoN formally approved UNHCR's proposal on camp consolidation, under which three eastern camps were gradually closed and the refugees relocated to Beldangi camp in Jhapa District and Sanischare camp in Morang District. Beldangi-I, Beldangi-II, and Beldangi-II extension camps were administratively merged into one Beldangi camp in January 2011. Goldhap camp was closed in June 2011; Timai camp was closed in January 2012; and Khudunabari camp was closed in May 2012.

Despite the reduction of the refugee population, the needs of those remaining have not decreased. Additional vulnerabilities have been identified through the resettlement screening process, including: gender based violence (GBV), alcohol and substance abuse, psycho-social and mental health issues, and protection risks for children not in a stable family environment. Although innovative programmes were put in place during the years to more effectively address these issues, the need for long-term funding to support them remains a concern.

General rations provided by WFP are the main source of food for the refugees. The food ration consists of rice, pulses, vegetable oil, sugar, salt, and "Super Cereal" and provides approximately 2,080 kcal/person/day; including about 50 grams of protein; 30 grams of fat; and most of the essential micronutrients. The food items reflect the cultural and dietary preferences of the Bhutanese refugees. However, yellow split peas (YSP), currently provided as the pulse commodity are not commonly prepared as "dal", a pulse soup which is

traditionally consumed as part of every meal. Refugees expressed a clear preference to receive pulses that are commonly prepared as “dal”.

The mission found that the refugees were satisfied with the quantity and the quality of the food items, timeliness of the delivery, and the distribution mechanism. The refugees expressed satisfaction with the level of services provided by WFP and its Cooperating Partners: Lutheran World Federation (LWF) and Centre for Quality surveillance, (CQS). The mission found that beneficiaries are aware of where and how to report any discrepancy in quality and quantity of general food basket items provided to them and they expressed satisfaction with the monitoring system.

The mission found the food supply chain management to be satisfactory in both refugee camps. The food storage facilities and the distribution centres are well-managed. The record keeping, documentation and sharing of information between the Cooperating Partners (CP), beneficiaries, and WFP is satisfactory. The food distribution system is well managed and losses of food are minimal. There is a close coordination between WFP and Lutheran World Federation (LWF) staff, the Camp Management Committee (CMC) and the volunteers who assist each distribution.

WFP staff, partners, and refugees all cited problems distributing palm oil during winter months as this type of oil solidifies in cold weather and must be heated in order to be distributed in liquid form.

Other sources of food available to the refugees include: fresh vegetables and ginger distributed by LWF with UNHCR funding; production from home gardens; poultry-raising; and market purchases. WFP and partners provide supplementary food items to vulnerable groups within the refugee population, including: malnourished children; pregnant and lactating women; and patients suffering from tuberculosis or HIV/AIDS.

Beneficiaries raised concerns regarding the quality and irregular supply of the vegetables. Some beneficiaries raised concerns with the timeliness of the supply of fuel for cooking. However, the mission observed an adequate supply/stock of cooking fuel in all households visited.

The mission observed that health, nutrition, and water/sanitation programs implemented by LWF and AMDA are of high quality and provide comprehensive coverage to the populations residing in the two camps. However, service delivery in the health and education sectors has become challenging and more resource intensive, due to the departure of skilled refugee workers. To ensure continuation of critical services, UNHCR and its implementing partners have implemented accelerated programs to train refugees to replace departing workers and; have trained and employed Nepalese from local communities.

### **Mission recommendations:**

- WFP reviews the prices and availability of a variety of pulses, which are customarily prepared as “dal”, including: yellow split lentils; chickpeas; black gram; pigeon peas; and mung beans.
- UNHCR and WFP should increase their efforts to learn more about the scope and scale of remittances and how refugee households are utilizing these cash resources to meet their food and non-food needs.
- Increase the focus on the needs of vulnerable households, such as persons with disabilities, older persons, and single women.
- UNHCR and WFP should continue their support for vegetable gardens and make efforts to expand the number of vulnerable households that participate in this activity. There is a need to ensure access to sufficient land for vegetable cultivation for the remaining refugees and particularly those who have been relocated from other camps.
- UNHCR and WFP should conduct a review of skills training and loan schemes to determine their impact on the participants pending their departure on resettlement.
- AMDA and UNHCR should develop a plan to rationalize health care service delivery across the two remaining camps so as to make optimal use of the financial and human resources available.
- AMDA should proactively identify incentive workers who are currently in the resettlement pipeline and establish a roster of potential replacements from the host communities as well as the refugee population while developing a rolling training plan for new health workers.
- Continue provision of supplementary food and micronutrient powder.
- Nutrition interventions should emphasize preventive approaches rather than curative approaches with emphasis on child feeding and caring practices.
- UNHCR, WFP, and AMDA should review the indicators of malnutrition and select one to use as criteria for decisions about when a child has recovered.
- WFP should investigate the possibility of distributing another vegetable oil during winter months, while continuing to distribute palmolein oil during warmer months.
- WFP should investigate the cost implications of distributing salt in one kilogram packages rather than in bulk as is the current practice.
- Raise awareness among refugees of the need to contribute with voluntary labour to sustain the general ration food distribution system.
- WFP should improve the system for rodent control in and around the warehouses; repairs to the floors in some of the warehouses; and make sure that all weight scales are properly balanced.
- UNHCR should conduct a comprehensive information campaign explaining the rationale for its decision to discontinue fresh vegetable distribution, prior to implementation.

- UNHCR and its implementing partner LWF should communicate information about the delivery schedules of non-food items, including timely notification of any possible disruptions in supply to refugees.

## **Background and Context**

Nepal had a total population of 26.6 million in 2010 according to their national census and is one of the poorest and least developed countries in the world. According to UNDP (<http://hdrstats.undp.org>) Nepal's Human Development Index score ranks 157 out of 187 countries, with a gross domestic product of US \$1,049 (PPP) per capita and 78.1 percent of the population living on less than US \$1.25 per day.

Bhutan had a total population of 0.6 million in 2005, according to their national census and is also one of the poorest and least developed countries. According to UNDP, Bhutan's Human Development Index score ranks 141 out of 187 countries, with a gross domestic product of US \$4,643 (PPP) per capita. The proportion of the population living on less than US \$1.25 per day is not available from UNDP, but the UN supported Poverty Analysis Report estimated the poverty rate in 2007 at 23.2 percent.

Asylum seekers from Bhutan started arriving in Nepal in the early 1990s following enforcement of a series of restrictive immigration and citizenship laws in the second half of the 1980s. Those who arrived before June 1993 were accepted *prima facie* as refugees. Seven camps were established in Jhapa and Morang districts in the far eastern corner of Nepal to accommodate the refugees, provide security, and facilitate delivery of humanitarian assistance. At the request of the Government of Nepal (GoN), UNHCR and WFP began providing humanitarian assistance to the refugees in 1992.

The two south-eastern Terai districts which have hosted the refugees from Bhutan for 20 years have a total population of 1,775,300, of which 810,600 reside in Jhapa district and 964,700 reside in Morang district<sup>1</sup>. The two districts are known as the 'breadbasket' of Nepal, reflecting their agriculture-based economy, and are host to migrant workers from the hill and mountain regions of Nepal, as well as the refugees.

Nepal is not a signatory to the 1951 Convention relating to the Status of Refugees which is the key legal document in defining who is a refugee, their rights and the legal obligation of states. Nor is Nepal a signatory to the 1967 Protocol, which removed geographical and temporal restrictions from the 1951 Convention. Despite not being a signatory to the 1951 Convention and the 1967 Protocol, Nepal has generously hosted thousands of refugees from Bhutan for two decades.

The Ministry of Home Affairs (MoHA) has the overall responsibility for the refugee programme in Nepal. The Ministry established a National Unit for the Coordination of Refugee Affairs (NUCRA,) responsible for implementing the government's refugee policy. A Refugee Coordination Unit (RCU) was established under the authority of the Chief District Officer (CDO) of Jhapa. Camp supervisors and assistants have been recruited as part of the Refugee Coordination Unit (RCU) and are posted in each camp.

The RCU, in coordination with UNHCR, is responsible for:

- camp administration;
- camp security, law, and order;
- recruitment and administration of camp supervisors and police;
- registration and screening of new arrivals in conjunction with UNHCR;
- the movement of refugees; and
- coordinating the work of UN and NGO partners.

UNHCR continues to advocate for the adoption of a national legal framework to address asylum issues and accession to international refugee instruments. UNHCR continues to

---

<sup>1</sup> National Population and Housing Census, 2011, Central Bureau of Statistics, Government of Nepal

advocate for policies favourable to refugees and work towards the implementation of comprehensive solutions for all refugees in Nepal.

To assess the situation in the camps and the assistance provided to the refugees, Joint Assessment Missions (JAMs) are conducted periodically by UNHCR and WFP with assistance from the Government of Nepal, implementing/cooperating partners, and other NGOs providing services in the camps. In Nepal, a JAM has been conducted in 2001, 2004, 2006 and 2008. UNHCR and WFP agreed to cancel the 2010 JAM, due to the challenges of implementing a scaled-up resettlement process and planning for camp consolidation.

## **Methodology**

The 2012 Joint Assessment Mission (JAM) was conducted from June 25- 27 2012 and involved collection and analysis of primary data, as well as a review of secondary data and reference materials. Prior to the start of the mission, UNHCR and WFP staff compiled a comprehensive information package for analysis by mission members, including: key reference documents; secondary data; and other relevant background material. Questionnaires for qualitative and quantitative assessments were prepared and reviewed. During the field visits, primary data were collected through direct observation of conditions in the camps and hosting communities; key informant interviews and focus group discussions with refugees, Implementing/Cooperating Partners, and other stakeholders.

Focal persons in WFP and UNHCR coordinated technical aspects of the mission and organized two teams comprised of eight members each. Each team was given specific areas of focus (see Mission Programme), which are outlined in the table below:

Table 1: Mission Structure

Team	Area of Focus
A (Team leader: WFP)	Food Security (including ration size and composition)
	Logistics/Warehouse Management
B (Team leader: UNHCR)	Protection, Refugee Numbers, and Durable Solutions
	Refugee Welfare
	Health Sanitation and Nutrition

On 25 June 2012, Mission members travelled to eastern Nepal, where they were joined by UNHCR and WFP staff based in Damak, and met with Implementing/Cooperating Partners (IPs/CPs) at the UNHCR Sub-Office. Field visits to the two refugee camps Beldangi and Sanischare were conducted on 26 and 27 June 2012. The teams met to consolidate their findings and draft recommendations following each day's visit. A debriefing was conducted with implementing/cooperating partners (AMDA, CARITAS, TPO, and LWF) following the field visits and the additional feedback received has been incorporated into this report.

## **Refugee Numbers, Protection, and Durable Solutions**

Statistics for May 2012, maintained by Refugee Coordination Unit (RCU) and UNHCR, record a total camp population of 48,590 refugees, of which 37,311 reside in Beldangi camp and 11,279 reside in Sanischare camp. An additional 50 persons are registered, but currently reside at locations outside of the two recognized camps. The reasons for their out-of-camp status include, among others: incarceration at a jail or prison; attendance at an institution of higher education outside the camp; or at an institution of higher education outside of Nepal.

The Government of Nepal (GoN) has recognized refugees from Bhutan, who arrived before June 1993 on a *prima facie* basis. A registration/census exercise was conducted in 2006-2007 and again in 2008. The GoN has distributed refugee identification cards to persons who were present in the camps during these registration/census exercises, entitling them to receive assistance and to be considered for resettlement. However, there are a number of unregistered refugees living in the camps. As of end May 2012, there were 968 census absentees whose names are recorded in UNHCR lists, but who did not participate in the earlier registration exercises. These people are not currently receiving general rations or other forms of assistance, with the exception of a few individuals, mainly unregistered children below 18 years listed in the UNHCR proGres database are receiving temporary rations. In addition, there are approximately 3,000 asylum seekers residing in the camps, who have requested to be considered as refugees, making them eligible for humanitarian assistance and for eventual resettlement. On 21<sup>st</sup> June 2012, UNHCR and the GoN commenced a screening and registration exercise for the census absentees and asylum seekers.

The most significant change since the last Joint Assessment Mission (2008) has been the scaling up of the resettlement process, which commenced in 2007. The Core Group of resettlement countries (United States, Australia, Canada, New Zealand, Norway, Denmark, the Netherlands, and the United Kingdom) has accepted 65,325 refugees as of 31 May 2012.

The International Organization for Migration (IOM), working in close collaboration with UNHCR, Nepalese authorities, and the resettlement countries, has established facilities in Damak town and is processing refugees and transferring them to Kathmandu for onward travel to third countries. UNHCR is conducting mass information campaigns to explain the resettlement procedures and opportunities using meetings, posters, leaflets, and radio announcements. The activities of anti-resettlement groups in the camps have been minimal, although advocacy for repatriation to Bhutan does continue.

The GoN collaboration with the third country resettlement process has continued in spite of changes in government leadership and staff turnover in the Refugee Coordination Unit (RCU) in both Chandragadhi, where camp supervision takes place, and in the National Unit for Coordination of Refugee Affairs (NUCRA) at the Ministry of Home Affairs (MoHA) in Kathmandu. Good collaboration between the GoN and UNHCR is also reflected in enhanced working relationships with line agencies at district level.

If the current rate of resettlement departures of 12,000 to 18,000 per year continues unchanged, it is projected that 10,000 refugees from Bhutan will remain in Nepal by 2016. Projections for the population of refugees remaining in Nepal are presented in the following table:

Table 2: Projected number of refugees remaining at the beginning of each year:

<b>Beginning of Year</b>	<b>Projected number of refugees</b>
2013	38,000
2014	26,000
2015	16,000
2016	10,000

Resettlement continues to be the only viable durable solution for the refugees from Bhutan, as voluntary repatriation has not yet been possible even on humanitarian grounds, and local integration is not considered an option. The Governments of Nepal and Bhutan have held fifteen rounds of ministerial talks since 1993, but bilateral talks stalled in 2003 and have not been revived. UNHCR has requested the Government of Bhutan to consider permitting voluntary repatriation on a humanitarian basis, but it has not yet been possible to implement.

The Government of Nepal is responsible for the overall security and protection of refugees and humanitarian workers. The Armed Police Forces have deployments in the camps and there is also collaboration with the civil police. The close collaboration with the Armed Police Force (APF) in Jhapa and Morang districts has been of significant benefit to the maintenance of law and order within the camps and to the continuation of the UNHCR-IOM resettlement operation despite recurrent protests / strikes affecting the districts.

Monthly security meetings are held between the Jhapa Chief District Officer, UNHCR and WFP to discuss security issues. Camp Management Committees are included in discussions on any security incidents which occur inside or outside the camps. Community Watch Teams (CWT) have been established in the camps as part of the Camp Management Committees (CMC). UNHCR supports the CWT with equipment and training for internal security within the camps. However, it was noted by some refugees that the presence of the Community Watch Team (CWT) does not necessarily bolster a feeling of safety and security in the camp.

In general, there have been minimal problems between the refugees and host communities. However, the presence of the refugees has had a significant impact on the environment and use of natural resources surrounding the camps and this has sometimes caused tension between the two communities in the past. To manage the sensitivity with regard to use of firewood from the local forest by the refugees, UNHCR provides sufficient fuel to the refugees in the form of compressed coal dust briquettes and fuel efficient stoves. In addition, UNHCR has provided solar cookers to all refugee families. UNHCR has also supported many host community interventions, including: extension of water pipelines to surrounding communities; waste management activities implemented through local Forest User Groups; support to government schools and health facilities; distribution of solar cookers in host communities; and joint sports and recreational activities among host and refugee communities.

In collaboration with the GoN, UNHCR is the lead agency for refugee protection. UNHCR has field associates representing the agency in all camp sections and refugees can approach them for all protection related matters. Staff members of UNHCR, WFP, and the implementing/cooperating partners have all signed a Code of Conduct. Capacity building of government and NGO partners in protection issues is undertaken on a regular basis.

The dynamics of the refugee community has changed dramatically, since the previous JAM in 2008, through resettlement and camp consolidation. It has been a challenge to maintain the current quality of camp services, particularly in the education and health sectors as many skilled workers have already departed and the pace of resettlement creates challenges for timely recruitment and training of replacements.

In general, refugees felt that the process of camp consolidation had not affected access to services nor food security in the camps. However, some refugees were under the impression that services would be concentrated in Beldangi II in near future, which may pose challenges for persons with disabilities; the elderly; and/or immobile refugees. Some refugees expressed discontent with lack of regular repair of their huts. The mission notes that UNHCR does implement a policy to assist vulnerable families with shelter repair, but all other households are expected to use their own resources to repair their shelters.

Large-scale theft has not been reported as a result of resettlement or camp consolidation. However, some refugees expressed concern that a large scale disaster, such as fire in the camp, may offer opportunities for criminal acts such as stealing food and/or non-food items from those affected.

Despite the reduction in refugee numbers, the needs of those remaining have not decreased proportionately. Additional vulnerabilities have been identified through increased field presence by UNHCR and partner agencies and through the resettlement screening process, including: alcohol and substance abuse; gender-based violence; and protection risks for children not in a stable family environment. Although innovative programs have been put in place to more effectively address these issues, the need for long-term funding to support them remains a concern.

Substance abuse has the potential to create and/or contribute to other protection concerns. Substance abusers may engage in antisocial behaviour, including: violence, theft, and/or threatening behaviour. There were reports that several families are dysfunctional and unable to contribute to a good camp environment due to substance abuse.

With regard to gender-based violence, UNHCR together with implementing partners offer a multi-sectoral approach, including prevention, care, and support ensuring the survivor receives appropriate follow up after an incident. Alcohol and substance abuse are interlinked with a large proportion of gender-based violence incidents. However, there have been reported incidents of gender-based violence not related to substance abuse. In focus group discussions, the awareness of interventions related to gender-based violence seemed to be limited, indicating that current interventions in support of women's empowerment and gender-based violence need to be more strategic.

The mission found that female representation in the distribution sub-committees meets established standards. However, the mission did receive requests to further increase female participation. WFP ration cards include the name(s) of female heads/recipients of family food entitlements, in line with WFP's Enhanced Commitment to Women (ECW). This initiative was designed to strengthen women's control of the family food rations.

According to some refugees, the resettlement process is contributing to protection risk-situations by causing family conflicts/disputes, especially in mixed marriage cases and in situations where caregivers find their case delayed due to unaccompanied and/or separated children that they are taking care of.

Refugees expressed concern that unaccompanied and separated children, persons with disabilities and their family members, older persons, and un-educated family members were at greater risk of protection, food security, and nutrition issues. However, refugees reported that there is some level of social cohesion and community support, which can be mobilized to support vulnerable persons, including those that are unable to collect their food rations themselves.

Other protection concerns and needs were identified through participatory assessments, including:

- 1) decline in social support within the camp, due to the declining camp population;

- 2) need for additional psychosocial / mental health services to address needs of vulnerable refugees;
- 3) need for additional information on durable solutions, targeted specifically at vulnerable and marginalized groups;
- 4) anxiety over a possible decrease in assistance to those refugees not opting for resettlement;
- 5) anxiety over possible stigmatization and discrimination against refugees when accessing public services based in a host community; and
- 6) potential jealousy among host community residents directed against resettling refugees.

## **Food Security**

### ***Food Security, delivery and distribution***

Statistics for May 2012, maintained by the Refugee Coordination Unit (RCU) and UNHCR, show a total camp population of 48,590 refugees, of which: 47,672 received general rations; 918 were not eligible because they were not physically present during the earlier census exercises; and 50 are listed as residing outside of the camps. The table below presents the numbers of beneficiaries eligible for general food distribution by camp.

*Table 3: Beneficiary numbers: General Ration Distribution (May 2012)*

<b>Camp</b>	<b>Population</b>	<b>General Ration Beneficiaries</b>
Beldangi	37,311	36,679
Sanischare	11,279	10,993
Total	48,590	47,672

Data on population and households are checked on a weekly basis to reflect changes in births, deaths, resettlement, and transfers between camps. Ration cards are collected and/or amended prior to departure of the household in order to account for resettlement.

General rations provided by WFP are the main source of food for the refugees. The food basket consists of rice, pulses, vegetable oil or palmolein oil, sugar, salt, and "Super Cereal". The food basket provides 2,079 kcal (per person per day), and includes 49 grams of protein, 30 grams of fat, and most of the essential micronutrients. Although, the energy content is slightly below the 2,100 kcal recommended by the SPHERE project "Humanitarian Charter and Minimum Standards in Disaster Response", the mission concluded that this small difference did not compromise the food and nutrition security of the refugees because they have access to sufficient additional food items through market purchases, cultivation of gardens, and poultry raising. Food items and quantities provided in the general ration are presented in the following table.

*Table 4: Food Items and Quantities: General Ration Distribution*

<b>Commodity</b>	<b>General Ration: (grams/ person/day)</b>
Rice (polished white)	400 grams
Pulses (yellow split peas)	60 grams
Vegetable Oil / Palmolein Oil (Vitamin A fortified)	25 grams
Super Cereal (Wheat Soya Blend with sugar)	35 grams
Sugar	20 grams
Salt (iodized)	7.5 grams

The refugees are entitled to the same ration, regardless of their age, although young children and infants have a lower energy requirement than adults. In households with young children or infants, intra-household sharing usually results in additional food for adult members. However, beneficiaries expressed concern that the quantity of rice was not sufficient for certain households where all or most household members are adults; where one or more household members are not eligible to receive general rations, such as census absentees; for households where there is marriage between a refugee and a Nepali citizen; or for households with one or more vulnerable members.

The items in the food basket reflect the cultural and dietary preferences of the Bhutanese refugees. The exception is yellow split peas, which are not commonly prepared as "dal", a lentil soup, which is consumed as part of every meal. The refugees expressed a clear preference to receive pulse items, which are commonly prepared as "dal", including: yellow split lentils ("chana dal"), chickpeas, black gram, pigeon peas, and/or mung beans. WFP provides yellow split peas as the pulse component of the food basket because they have a similar nutritional content, are lower in cost than other pulses with similar nutritional content,

and they are readily available in local and/or international markets. WFP previously distributed a combination of yellow split peas and chick peas, as the pulse component of the general ration. However, WFP replaced chickpeas with yellow split peas in September 2011, due to an increase in the price of chickpeas in global markets and limited availability in the local markets. ***The mission recommends that WFP reviews the prices and availability of a variety of pulses, which are customarily prepared as “dal”, including: yellow split lentils; chickpeas; black gram; pigeon peas; and mung beans.***

The mission received a request for distribution of parboiled rice instead of raw rice. Previously, WFP provided both parboiled rice and raw rice, but the distribution of parboiled rice was discontinued in 2008 because of limited availability in local and international markets.

UNHCR provides a complement of 250 grams of seasonal fresh vegetables and 10 grams of ginger per person per week to increase the palatability of the general ration.

Donor representatives have encouraged WFP to explore the possibilities of cash transfers instead of food distribution. In December 2011, WFP assessed the market conditions in the vicinity of the camps and explored the different cash delivery mechanisms available in the area to determine whether the minimum conditions for a cash-based assistance program exist. The findings of the assessment indicated that cash assistance to the refugees from Bhutan would not be the most effective form of assistance at this stage. It was recommended that cash assistance should be reconsidered once the resettlement process is completed and the refugee population has decreased to 10,000 or less.<sup>2</sup>

Beneficiaries interviewed by the mission consistently expressed a strong preference for food rather than cash. Refugees expressed concerns that cash assistance would be spent on items other than food, resulting in a negative impact on overall food security in the camps and on the nutritional status of children and other vulnerable members of beneficiary households, in particular.

### ***Monitoring and Evaluation***

The Association of Medical Doctors of Asia (AMDA) is responsible for food basket monitoring, which is implemented in the camps through two separate systems: randomly selected household monitoring, and voluntary monitoring. During food distributions, 7-14 households are randomly selected from distribution counters across different sub-sectors of each camp. Each food item received by the selected household is re-measured by a Food Basket Monitor. Action is taken if measured quantities are found to be above or below their household entitlement, with a 2 percent margin of error. In the case of insufficient quantity, additional food is provided to the household. In the case of excess quantity, surplus food is reclaimed by the monitoring team. In addition to regular monitoring, beneficiaries who believe the quantity or quality of food items received does not match their entitlement can bring their ration to a Food Basket Monitor for checking on a voluntary basis. During the field mission, the beneficiaries expressed that they were satisfied with the system and they were also aware about how it is working.

Most households have a Food Consumption Score above 65, indicating adequate diversity in their diet. For populations which regularly consume oil and sugar in their diet as do the Bhutanese refugees, Food Consumption Scores above 42 are categorized as “adequate”, scores lower than 28 are categorized as “poor”, and scores between 28 and 42 are categorized as “borderline”.

Refugees are consuming the general food ration as intended. A review of Monitoring and Evaluation reports indicate very few cases of beneficiaries selling their food rations. These reports also indicate that food items are shared within the household on an equitable basis.

---

<sup>2</sup> February 2012, WFP Nepal CO: *Cash Feasibility Assessment - Food Assistance to Bhutanese Refugees in Nepal.*

The refugees expressed their satisfaction with the regular monitoring of the quantity and quality of the food items provided in the general food distribution. The beneficiaries were aware of where and how to report discrepancies in quantity and/or quality of food items provided to them. The role of the Ration Suspension and Restatement Committee contributes to timely and effective delivery of general rations to refugees living in the camps. However, there is a need to expedite the implementation of RSRC recommendations.

**Supplementary food for vulnerable groups**

WFP and partners, with technical support from UNHCR, provide supplementary food items to vulnerable refugees, including: malnourished children; pregnant and lactating women; and patients suffering from chronic ailments, tuberculosis, or HIV/AIDS. Malnourished children receive 200 grams of “Super Cereal”, which is a Wheat-Soya blend with sugar, and 20 grams of Vegetable Oil or Palmolein Oil, which has been fortified with Vitamin A. Pregnant and lactating women, patients suffering from chronic ailments, and patients under treatment for tuberculosis or HIV/AIDS receive 95 grams of “Super Cereal” and 10 grams of Vegetable Oil or Palmolein Oil. In May 2012, a total of 1,427 refugees received Super Cereal and Vegetable Oil / Palmolein Oil through the supplementary feeding programme.

A total of 3,867 refugee children between the ages of 6-59 months received Micro-Nutrient Powder (MNP), also known as “sprinkles”. The Micro-Nutrient Powder is provided through a nutrition improvement programme that is implemented and monitored jointly by WFP and UNHCR for the purpose of reducing the prevalence of anaemia and other vitamin deficiencies. The table below presents the breakdown of Supplementary Feeding and MNP beneficiaries by camp.

*Table 5: Beneficiary numbers Supplementary Feeding Programme (May 2012)*

Camp	Camp Population	Supplementary Feeding	Micro Nutrient Powder
Beldangi	37,311	1,122	2,910
Sanischare	11,279	305	957
Total	48,590	1,427	3,867

**Additional sources of food**

Most refugee households have access to sources of food in addition to the general rations, vegetable distribution, and supplementary feeding programmes. Both UNHCR and WFP provide support to refugees participating in vegetable gardening. Some households also raise poultry and/or goats for own consumption and/or sale.

Monitoring and Evaluation reports indicate that an increasing proportion of refugees are purchasing food items from local markets to increase the diversity in their diet. The sources of income to support cash purchases of food items, includes: remittances received from abroad; employment inside the camp as incentive workers; and/or operating a business inside the camp. Households without access to remittances, businesses, or employment finance their purchases of food and non-food items through loans. This was also confirmed during the field visit. Sources of income are explored further in the Refugee Welfare section of the report.

**Impact of resettlement and camp consolidation**

The Mission considered the impact of resettlement and camp consolidation on food security. There were some short-term negative impacts due to a reduction in land available for reclamation gardens due to camp consolidation and costs incurred during the relocation from one camp to another. However, the impact of resettlement is likely to be positive over the longer term, as additional land becomes available for cultivation and resettled families are able to send remittances to those still in the camps.

## Refugee Welfare

Nepal is not a signatory to either the 1951 Refugee Convention or the 1967 Protocol. Refugees are considered foreigners and are not allowed to engage in economic activities or own any kind of property.

Some refugees participate in the implementation of camp services, for which they receive incentive payments. Others earn income by operating small business enterprises, such as restaurants, shops, tailor shops, and hairdressers/beauty parlours in the camps.

The most significant change in refugee welfare since 2008 has been an increase in remittances from abroad, which has followed the scaling up of the resettlement process. The mission observed numerous shops located just outside the camps advertising money transfers. Although these services are utilized by both refugee and host communities, their use by refugees appears to be increasing dramatically. The mission noted that refugees were reluctant to acknowledge receipt of remittances, apparently fearing that they may lose access to rations or other assistance if found to have access to external financial support.

Not all households receive remittances and for those that do, there is considerable variation in the amounts and the frequency with which funds are received. For those households that do receive remittances, the cash resources enable the purchase of food and non-food items. Refugees use remittances to purchase food items other than those provided in the general ration, increasing the diversity of their diet with meat, milk, and/or vegetables. Remittances are also used to pay off debts, to provide loans to others, or set aside for contingencies such as fire. Some refugees have used the resources to start a business or open a shop in the camp. Others have used the funds to obtain skills training or an advanced education pending their resettlement departure. The standard of living has increased for certain segments of the camp population. This was clearly visible to mission members in the form of electricity supply, TV sets, and satellite dish antenna.

There is a growing concern that access to remittances may be a contributing factor to the decline in willingness to contribute voluntary labour to run the food distribution system and other critical camp services. This change in attitudes is also having a negative impact on the viability of community based initiatives, which contribute to social stability within the camps. ***The mission recommends that UNHCR and WFP increase efforts to learn more about the scope and scale of remittances and how refugee households are utilizing these cash resources to meet their food and non-food needs.***

The mission was informed that some households have adopted several coping strategies, including: borrowing money to finance purchases of food and non-food items; borrowing food and/or non-food items while promising to pay back the lender with future rations; and relying upon the generosity of their relatives, friends, and neighbours. Similar situations may arise in households where members do not receive remittances and/or are vulnerable for other reasons. The mission heard reports that some children have been engaging in petty theft or adopting other high-risk behaviours in order to acquire cash resources. ***The mission recommends increased focus on the needs of vulnerable households, such as persons with disabilities, older persons, and single women.***

Refugees informed the mission that cultivation of vegetables gardens for their own consumption is of great value. Some newly relocated families may not yet have access to land for growing vegetables. However, as resettlement departures continue, additional land should become available for vegetable gardens, provided the existing camp area is not reduced further. ***The mission recommends that UNHCR and WFP continue their support for vegetable gardens and make efforts to expand the number of vulnerable households that participate in this activity.*** There is a need to ensure access to sufficient land for vegetable cultivation for the remaining refugees and particularly those who have been relocated from other camps.

### ***Skills training/vocational training***

The refugees requested access to skills trainings which they consider will be useful in the resettlement countries. The list of skills requested included: computer software and hardware; finance; driving; tailoring; housekeeping; hair dressing / beautician; masonry; carpentry; plumbing; electrical wiring; and repair of radios/electronic equipment.

The mission was informed that this type of training is already offered in the camps, but that enrolment opportunities are constrained by limited budget and a lack of suitable service providers in the region. As the resettlement process scaled up, UNHCR introduced specialized training focused on helping refugees meet entry level job requirements in the resettlement countries. Currently, UNHCR supports LWF and BRWF implemented vocational training in various skills, which benefit approximately 500 refugee participants each year. These vocational training courses target school drop outs and youths, who could potentially engage or are engaged in risky behaviour.

Some refugees complained that despite expressing their interest in specialized skills training, they were not selected for courses as they did not meet the eligibility criteria / educational qualifications. The mission was informed that training courses for nurses, health workers, and other highly specialized skills, have established standards in terms of eligibility criteria, including minimum educational qualifications.

The Bhutanese Refugee Women's Forum (BRWF) implements a loan scheme with the support from WFP. Beneficiaries are selected based upon vulnerability-criteria, such as single (female) headed households, large families without extra support from outside, and families who have members suffering long term illness. During focus group discussions, it became apparent that the majority of refugees were either not aware of the loan scheme or hesitated to avail themselves of the scheme because they view loans as a debt burden.

***The mission recommends that UNHCR and WFP conduct a review of skills training and loan schemes to determine their impact on the participants pending their departure on resettlement.*** The review should identify methods to (1) target vulnerable refugees who are likely to benefit from participation; (2) provide information and advice to refugees so they can select the best option(s) for skills training; (3) provide post-training counselling and support to make the best use of the skills acquired; and (4) provide counselling and support to loan-scheme participants seeking to establish a viable business in the resettlement country.

The GoN and the UN Country Team currently recognize the need for a comprehensive approach to development in those districts hosting refugee populations. The Community Based Development Programme – Transitional Solutions Initiative (CBDP/TSI), a multi-year programme is proposed to be introduced in the refugee hosting and impacted areas of Jhapa and Morang districts and which is pending endorsement by the GoN. The programme aims to include humanitarian needs within the development agenda, in order to ensure sustained and qualitative interventions for the remaining refugees and the local Nepalese community members.

This programme is a joint GoN and UNCT initiative and aims to implement programmes over a period of five years with the aim of promoting peaceful co-existence between host and refugee communities by addressing protection and development needs of the host community, as well as the remaining refugees, while keeping in mind cross-cutting issues such as age, gender and diversity.

The CBDP/TSI aims to

- strengthen shared public services for host communities and refugees;
- enhance host community and refugee capacities; and
- improve the protection environment and ensure human rights.

## **Health, Nutrition, and Sanitation**

For the last few years, the health situation in the camps has been stable. Health indicators for the camps are better than comparable national prevalence rates for Nepal, including: a Crude Mortality Rate (CMR) of 0.3/1000 population / month; an Under-Five Mortality Rate (U5M) of 0.3/1000 population/month; and an Infant Mortality Rate (IMR) of 17/1000 live births.

Health care services for the refugee population include preventive care, curative care, and promotional services delivered through Primary Health Care Centres (PHCC) and Community Health Units established in each camp. These service delivery points are responsible for Reproductive Health (RH) and HIV services, Integrated Management of Childhood Illness (IMCI), nutrition services, community health services, mental health services, and outpatient management. (See Annex 1 for chart of camp PHC).

Health Information System (HIS) is fully operational and has aided monitoring of the health situation. All PHCCs are jointly supervised by UNHCR and AMDA with each PHCC visited at least twice in a one month period. A referral system is in place to provide primary, secondary, and tertiary health services through assigned referral hospitals when a patient's medical condition cannot be managed at the PHCC level. Camp level and institutional level emergency/epidemic preparedness plans are maintained and updated twice per year.

STI prevention and management, voluntary HIV testing and counselling, support to PLHAs for treatment and care, condom promotion, promotion of adolescent health services, and improved community outreach activities have been maintained under the HIV and AIDS sub-project. In 2012, there were six identified HIV cases in the camps. AMDA- PHCP with support from UNHCR carries out the HIV and AIDS project targeting refugees and host community. Similarly, Social Awareness Development Group (SADG) with support from WFP also carries out the awareness campaign both inside and outside the camps through street theatre program. Peer and outreach educators from the refugee camps are mobilized to create awareness among young people and at risk groups on HIV and AIDS inside the camps and refer them to the VCT Centres. The educators mentioned that one of the key challenges was that identified risk groups in the refugee community refused to visit counsellors for confidentiality reasons while they were not sure these individuals availed themselves of services from the support agencies outside of the camp. There is a need to increase the present coordination between AMDA outreach workers and SADG a group that is composed of at risk groups and local NGOs in order to identify and ensure support programmes for refugees, such as sex workers and intravenous drug users (IDU) and to conduct a behaviour surveillance of the at risk population in the camp.

### ***Health workers***

UNHCR has invested in extensive capacity building of health workers by means of training, orientation, and also by regular monitoring and supervision by technical staff; but the frequent turnover of staff continues to remain a challenge in maintaining quality of interventions. An interagency health and nutrition coordination meeting carried out every two months has aided in building synergy in the community interventions.

The mission found that the health services provided to the camp population is of high quality and well-managed. However, the departure of trained health workers for resettlement and the reduction of national staff and incentive workers poses a serious challenge to the goal of maintaining the quality of health care services to the camp population.

***The mission recommends that AMDA and UNHCR develop a plan to rationalize health care service delivery across the two remaining camps so as to make optimal use of the financial and human resources available.***

***The mission recommends that AMDA proactively identify incentive workers, who are currently in the resettlement pipeline and establish a roster of potential replacements from the host communities as well as the refugee population while developing a rolling training plan for new health workers.***

During the focus group discussions with community health and nutrition workers, the need for continuous refresher training was evident. Training is particularly important for workers whose primary role is to counsel a community. Some recently relocated refugee families identified as vulnerable informed the mission that they had not been visited recently by a health worker. Strategic outreach by the health and nutrition workers is needed to identify medical cases and households that require extra care and support.

Comprehensive Reproductive Health services for women including antenatal and postnatal care, and Prevention of Mother to Child Transmission (PMTCT), are provided through the Maternal and Child Health (MCH) units of Primary Health Care Centres. In addition, the PHC also provides clinical management of SGBV survivors and their medical and psychological care, as well as general awareness programmes.

A comprehensive nutrition intervention programme, involving both curative and preventive approaches, has been established in both camps. Community Based Management of Acute Malnutrition (CMAM) has been implemented in the camps since 2009 and involves supervised provision of Ready to Use Therapeutic Food (RUTF) to severely malnourished children under 5 years of age. WFP provides food commodities for the Supplementary Feeding Programme (SFP), which targets moderately malnourished children under 5 years of age, pregnant women, lactating mothers, TB and HIV/AIDS patients, and medically vulnerable individuals). Supplementary take-home rations are being distributed on a weekly basis from the nutrition centre.

Community nutrition workers are carrying out community outreach activities including home visit and counselling. Behaviour Change Communication (BCC) activities using appropriate IEC materials are being used in the camps. AMDA has provided training in nutrition data collection and reporting, and better supervision and guidance to the nutrition staff, particularly the camp community nutrition workers, as was recommended in the previous JAM report. A nutrition surveillance system is operational and technical monitoring is carried out regularly by UNHCR. A referral system has been established with the government hospitals for the severely and moderately malnourished children with medical complications.

The mission found that the overall nutrition situation has improved and commends UNHCR, WFP, and the cooperating partners for their efforts. ***The mission recommends continued provision of supplementary food and micronutrient powder.*** Support for household vegetable production is also believed to have had a positive impact.

Although the specific causes of malnutrition are challenging to identify, it is believed that child care and feeding practices play a significant role, along with social issues which prevent mothers from addressing child nutrition effectively.

***The mission recommends that nutrition interventions emphasize preventive approaches rather than curative approaches with emphasis on child feeding and caring practices.*** Increased awareness of nutrition issues among the refugees population is needed. WFP, UNHCR, and AMDA, should collaborate to strengthen dissemination of messages on nutrition, personal hygiene, and proper consumption of diversified foods with the goal of effecting behavioural changes. Consideration should be given to designing nutrition related messages in a comic format, similar to the approach used by SADG to disseminate STI and HIV/AIDS messages through its theatre for development. There is a need to strengthen the current outreach to vulnerable families with the technical support from UNHCR. Breast feeding support group needs to be established in the community to improve Infant and Young Child Feeding (IYCF) practices.

Curative interventions should strive to treat malnourished children until they have achieved a full recovery and to avoid relapse after they have been treated successfully. Since 2011, children who remain malnourished despite nutrition interventions have been treated in a “Long Stay Children Programme”. The mission observed that two different indicators are currently used to determine if and when a child enrolled in the programme has recovered from malnutrition and can be discharged. There are children who fail to satisfy both indicators for recovery even though they have been enrolled in the programme for an extended period of time. Use of two indicators, rather than a single indicator, may have the unintended effect of keeping children enrolled in this programme longer than necessary. ***The mission recommends that UNHCR, WFP, and AMDA review the indicators of malnutrition and select one to use as criteria for decisions about when a child has recovered.***

The mission found that the water supply to the camps was satisfactory and the quantity provided met or exceeded the established guidelines. During 2011, an average of 28 litres of water per person per day was distributed to residents of the camps. Chlorination is carried out every day through trained field workers in the camps. Water testing is performed regularly by LWF at boreholes, tanks, taps, and at households that have been selected randomly. Water samples are sent to a laboratory in Kathmandu on a quarterly basis for quality control purposes. The mission did not have any recommendation with regard to water supply.

The mission found that the general sanitary conditions in the camp were satisfactory. All families have access to a latrine with an average of one latrine per two huts. For communal latrines, the number of persons per drop hole meets established guidelines. During the mission’s visit to the camps, household premises, toilets, and water supply appeared clean and well-managed by the agencies and by the refugees themselves. The mission did not have any recommendation with regard to sanitation.

## Logistics

### ***Food quantity/quality***

There is a high level of beneficiary satisfaction with the quantity and quality of the food items in the general food ration, as well as with the timeliness of delivery and the distribution mechanism. Through Focus Group Discussions, refugees informed that food items are delivered in the correct quantities on a regular basis. Both beneficiaries and cooperating partners expressed satisfaction with the information sharing by WFP regarding food pipeline breaks and delays in the delivery. They felt there was adequate opportunity to participate in decision making processes.

The Camp Management Committees and beneficiaries informed the mission that the distribution of palmolein oil is challenging during winter months, because the oil becomes solid at lower temperatures. In order to distribute the oil, each container must be heated. Heating the oil containers is time consuming and prolongs the distribution process.

***The mission recommends that WFP investigates the possibility of distributing another vegetable oil during winter months, while continuing to distribute palmolein oil during warmer months.*** If changing the type of oil is not possible, then WFP needs to inform the Camp Management Committees of the need to store palmolein oil in the sun during the day in the winter season so that it becomes liquid for distribution.

The Camp Management Committees and beneficiaries informed the mission that the distribution of salt is challenging because the quantity distributed per household is very small and because salt easily absorbs moisture, which makes it difficult to assure the correct amount is distributed. CMC's stated a preference to distribute salt in one kilogram plastic pouches. ***The mission recommends that WFP investigate the cost implications of distributing salt in one kilogram packages rather than in bulk as is the current practice.***

### ***Food Distribution***

Camp Management Committees informed the mission that, due to the resettlement process, it is becoming increasingly difficult to mobilize volunteers for tasks that are essential for the food distribution system, such as: on-loading/ off-loading; food storage and handling; and distribution of general rations.

Beneficiaries complained to the mission that they are requested to contribute with voluntary labour to the distribution process on a more frequent basis than before. The reason for this is the reduced number of households in the camps as a result of the resettlement process and is thus likely to continue. Difficulties in mobilizing voluntary labour complicate the work of the Camp Management Committees. Consequently, the identification of competent individuals willing to accept a managerial role in the food distribution system is becoming challenging, as well.

***The mission recommends raising awareness among refugees of the need to contribute voluntary labour to sustain the general ration food distribution system.*** As refugees have expressed a clear preference for distribution of food items instead of cash, the link between this preference and the need for voluntary labour to maintain the food distribution system needs to be emphasized. WFP should increase the frequency of trainings for CMC members, who directly manage the food storage, handling, and distribution tasks. In the medium/long term, WFP should be prepared to consider alternative arrangements for food handling and distribution, as voluntary labour will become increasingly difficult to mobilize as the number of refugee decreases.

### ***Food Storage and Handling***

The mission observed that the warehouses and the distribution centres are well managed by WFP and the LWF, with an active involvement of the refugees through the Camp Management Committee. The mission observed the existence of functioning and effective systems for: commodity tracking; record keeping; reporting of losses; bi-monthly physical verification; and disposal of damaged food commodities.

The camp-level presence of Centre for Quality Surveillance, a WFP contracted third party surveyor, has a positive impact on control of the quantity and quality of the food supplied to the WFP warehouses managed by LWF Nepal and hence to the beneficiaries. The Camp Management Committee (CMC) operates a Distribution Sub-Committee, which assists LWF Nepal to manage food storage, handling, and distribution. Involvement of the beneficiaries in the quality control process helps ensure the quality and quantity of food commodities meets agreed specifications while minimizing losses. WFP has provided trainings in warehouse management, quality control, and food distribution to the storekeepers and Camp Management Committee members. Regular monitoring by WFP serves to reinforce the training and ensure compliance, resulting in improved management of the food storage and distribution systems.

Following each distribution, empty containers and sacks are collected and stored in the Non-Food Item warehouse for eventual sale. The money generated through the sale of empty containers and sacks is reinvested into this programme.

The Mission was informed of a problem with rodents in the warehouses. This was acknowledged by LWF and WFP, who informed the mission that this was due, in part, to the proximity of the warehouses to dense vegetation. The mission was informed of the pest control measures that are currently being implemented to address the problem.

During the visits, the mission observed that the floors of the distribution centres need repairs. The floors are not level everywhere and this can contribute to minor food losses. The mission also observed that some of the scales in use were not properly balanced, which should also be corrected by WFP.

During household visits, the mission observed that some households do not store their food properly. Some beneficiaries complained about experiencing problems with rodents consuming their food.

***The mission recommends WFP should improve the system for rodent control in and around the warehouses; repairs to the floors in some of the warehouses; and that all weight scales be properly balanced.*** Scales that can't be properly balanced need to be repaired or replaced. With regard to food storage in the refugee huts, WFP needs to evaluate the feasibility and cost of providing vulnerable refugees with containers to store their food.

### ***Food transportation***

Suppliers and transporters informed the mission that WFP staffs are generally helpful and supportive. They credited local WFP staff with helping negotiate passage for supplier vehicles delivering food to the camps during protests and transportation blockades/strikes.

### ***Distribution of Fresh Vegetables***

Beneficiaries expressed concerns regarding quality, diversity, and timeliness of the vegetable distribution. Their concerns included: lack of variety, with the same vegetable or only one kind of vegetable provided at a series of distributions; poor quality, especially those vegetables from the bottom of a shipment; insufficient quantities in a delivery followed by delays; and an unpredictable delivery schedule.

The perishable nature of fresh vegetables poses serious challenges in terms of ensuring consistent quality, as well as timely delivery. Prices of fresh vegetables are volatile with steep price increases, in which case it is less expensive for a supplier to pay the non-performance penalty than to supply the requested items at a significant loss. To avoid cancellation of scheduled distributions, the only option has been to allow suppliers to deliver the same vegetable item for multiple distribution cycles, which is not favoured by the refugees.

These challenges have led UNHCR to consider discontinuing the distribution of fresh vegetables to the general population. Mission members are in agreement that a decision to discontinue the distribution would not adversely impact the nutritional status of most refugees. The mission observed that many refugee households currently have access to alternative means of acquiring fresh vegetables, including: market purchases using cash received through remittances, as well as through cultivation of vegetable gardens. ***The mission recommends that UNHCR should conduct a comprehensive information campaign explaining the rationale for its decision to discontinue fresh vegetable distribution, prior to implementation.***

#### ***Distribution of Non-Food Items***

Beneficiaries also expressed concern with the distribution of cooking fuel, due to a break in the supply of compressed-coal dust briquettes in March and April 2012 caused by a delay in selecting a supplier. Briquettes have to be procured outside of Nepal, and ensuring a steady supply of the commodity has proved challenging. Mission members observed a sufficient supply of briquettes in nearly all huts that were visited. Households may be able to supplement their supply of briquettes, from households departing for resettlement that sell or donate their stock of briquettes, kerosene, and ignition material to relatives, friends, and neighbours. Additional cash resources allow refugees to afford alternative cooking fuels. The mission visited households that were using an alternative cooking fuel, including firewood (more often) and LPG gas (less often).

***The mission recommends that UNHCR and its implementing partner LWF communicate information about the delivery schedules of non-food items, including timely notification of any possible disruptions in supply to the refugees.***

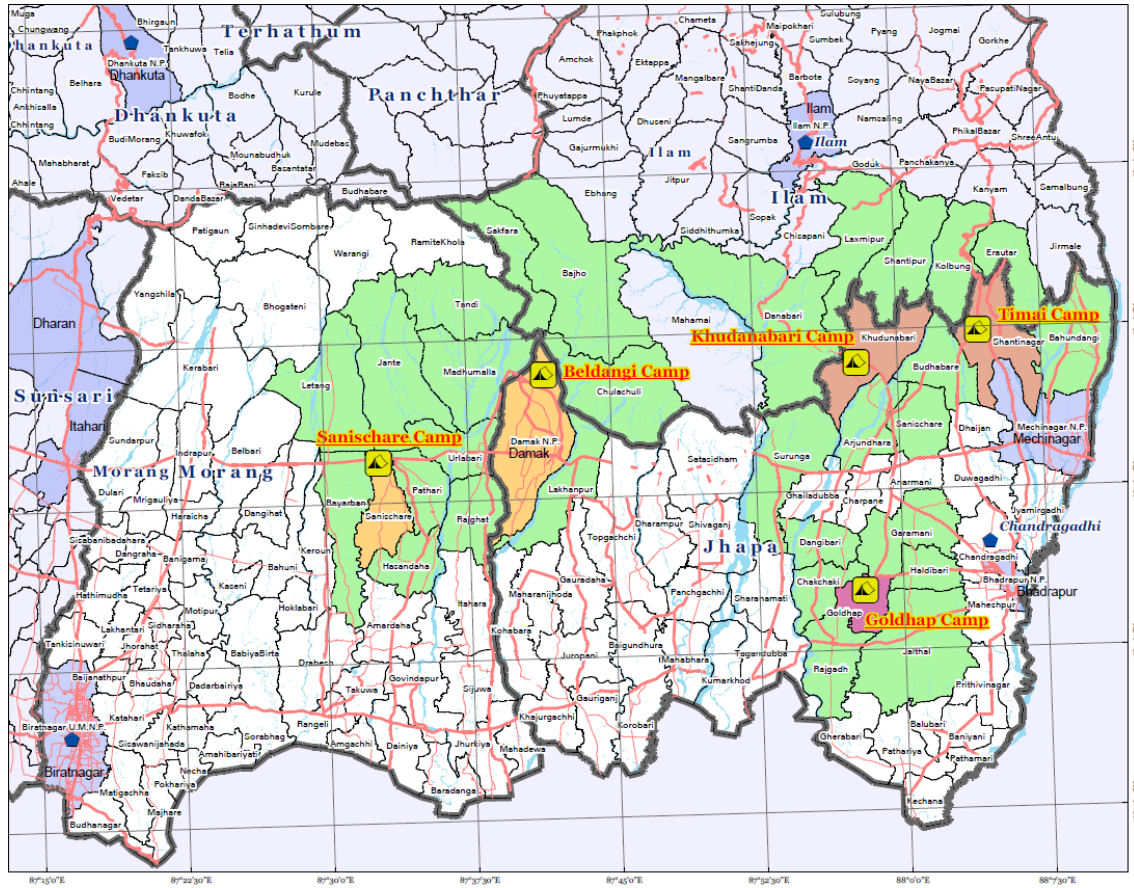
#### ***Security***

UNHCR, WFP and IOM staff follow UN security protocols and both agency sub-offices and vehicles are Minimum Operating Security Standard (MOSS) compliant. Both Morang and Jhapa districts, where the UN sub-offices and the camps are located, remain under UNDSS's Security Level II.

## Annexes

<b>Annex</b>	<b>Content</b>
<b>1</b>	Map of Camp Locations
<b>2</b>	Terms of Reference(including details on mission composition)
<b>3</b>	Detail Itinerary
<b>4</b>	Camp Population by Age & Gender as of May 2012
<b>5</b>	Camp Management Committee (CMC) Organigramme
<b>6</b>	Camp PHC functional flow chart and key health and WATSAN indicators

# Annex 1- Map of Camp Locations of Refugees from Bhutan



**Terms of Reference**  
**WFP/UNHCR Joint Assessment Mission**  
**“Assistance to the Refugees from Bhutan in Nepal”**  
**(18<sup>th</sup> June to 08<sup>th</sup> July 2012)**

**Background**

Refugees from Bhutan began entering eastern Nepal in late 1990. In 1991, the Government of Nepal (GoN) requested UNHCR to coordinate all emergency assistance activities for the refugees. Upon request from the GoN, WFP began providing essential food aid to the Refugees from Bhutan in January 1992. By 1993, over 80,000 refugees were granted prima facie refugee status. In December 2007, the number of registered refugees totalled 107,810 in the seven refugee camps.

The operation is considered generally well-managed, and the 2008 Joint Assessment Mission (JAM) observed that the overall health and nutrition status of the refugees was satisfactory and meets or exceeds international standards for refugee camps. The JAM has been conducted biannually since 2004. The last JAM was held in 2008. As mutually agreed by WFP and UNHCR the following JAM was postponed until 2012 due to other priorities such as relocation of refugees and camp consolidation. The WFP Country Portfolio Evaluation mission, which took place in 2009 was satisfied with the overall operations, inter-agency coordination, and implementation of activities with the Cooperating Partners, and found that WFP is aligned with the Government of Nepal and UNHCR. The mission observed JAM recommendations were adequately implemented. Furthermore in early 2011, a comprehensive Joint Needs Assessment was conducted by a multi stakeholders team (comprised of UNHCR and WFP besides the GoN and other UN/International and national agencies) was conducted in five sectors in refugee and hosting areas, which served as a basis for programming that year.

There have been some recent developments with regard to durable solutions for the refugee crisis that should be taken into account while conducting the JAM. An eight -member donor group of countries known as Core Group (Australia, New Zealand, Canada, Denmark, the Netherlands, Norway, United Kingdom, and the United States of America) agreed to accept the interested refugees with resettlement while efforts to advocate for other lasting solution, including voluntary repatriation, continues. UNHCR began planning for large-scale resettlement and embarked on mass activities in the camps after the Government of Nepal officially announced its policy on the use of resettlement within a comprehensive approach to solutions in October 2007.

By 30 April 2012, some 103,547 refugees have expressed their interest in resettlement and UNHCR has referred 90,143 persons for consideration to various resettlement countries (primarily the USA, Canada, and Australia) since October 2007. The refugees are currently in various stages of the resettlement process ranging from interviews to extensive medical screening, processing of travel documents, and cultural orientation before departure. By 30 April 2012, some 63,642 refugees have departed for resettlement to the USA, Canada, Australia, Denmark, New Zealand, Norway, Netherlands, and the UK.

UNHCR estimates that some 15,000-18,000 refugees will depart for resettlement in 2012. Along with the anticipated number of resettlement departures, various discussions, and strategy are being initiated to address, in the short run, the continuity of assistance activities and services in the camps and, in the long run refugees' access to shared services in the host communities particularly in health, education, environment, protection, and community services as services in the camps are reduced. Similarly, a coordination mechanism has been initiated to ensure timely planning on suspension and cancellation of food rations by

WFP upon departures of refugees for resettlement. The normal rations suspension and reinstatement for absentee refugees have been streamlined through a committee comprised of the GoN, WFP, UNHCR, LWF, and CMC Secretaries after JAM 2008 recommendation.

In early 2010, camp consolidation was considered as the only way to address needs of the decreasing population in a comprehensive and cost effective manner by UNHCR and the GoN. UNHCR with support from UNDP has already closed, rehabilitated, and reforested two camps (Goldhap and Timai) in 2011, and will be able to complete the closure of the third camp (Khudunabari) by end of May 2012 and will hand over the last camp to the government. Prior to camp closure a comprehensive information campaign was implemented followed by the establishment of an information desk at camp level, the creation and activation of a task force, the prioritization of families (vulnerability) and sub-sectors for the relocation, and provision of counselling services.

An integral part of this phasing down exercise is the proposal of the Community-Based Development Programme (CBDP)/Transitional Solutions Initiative (TSI), a joint initiative of the GoN, UNHCR, the United Nations Country Team (UNCT), which is pending endorsement by the GoN. Upon approval by the GoN, the CBDP programme will be led by the GoN, and its line agencies, primarily the Ministry of Home and the Ministry of Local Development, including the respective District Development Committees at the local level. The main objective of CBDP/TSI is to promote peaceful coexistence between refugees and hosting communities and facilitate the transition from humanitarian to development assistance.

A Joint Needs Assessments (JNA) was conducted to map the needs of the area hosting the refugee camps in early 2011, and its results were validated with relevant stakeholders at district and central level during a workshop in June 2011. The central level workshop served as a forum to, critically evaluate not only the findings of JNA and develop programme activities but also to discuss on the implementation and coordination mechanism of CBDP upon approval by the GoN. With the support of the technical working groups, led by the GoN and supported by lead UN agencies (UNHCR, UNDP, UNICEF, and WHO), an inter-agency document is being developed. In 2011, a series of meetings were held by the Technical Working Group (TWG) to finalize the sector strategy and projects with budgets under each sector, which is currently with the Ministry of Home Affairs for necessary review and endorsement. The CBDP/TSI programme is expected to be launched jointly by the GoN and the UNCT when approved by the GoN and will be implemented over a five years period benefitting residual refugees and some 400,000 host communities. The CBDP/TSI is expected to provide equal access to improved public services to both host communities and refugees, pending the voluntary repatriation of the latter to Bhutan.

An estimated 3,000 persons living in the refugee camps are not formally acknowledged as refugees from Bhutan by the GoN and consequently have not been receiving assistance from different agencies including government. Following discussions and numerous consultations with UNHCR and the Government of Nepal as well as bilaterally between the Government of Nepal and refugee representatives, UNHCR developed a proposal that was agreed upon with WFP to screen up to 1,000-1,500 estimated individuals from different categories for the provision of exceptional rations based on specific criteria for each group.

The "group" would mainly consist of people from the below categories:

- ID-card absentees,
- Census absentees (detainees in Nepal or India, academic students),
- ICRC cases,
- Non refugee spouse wives (widowed, abandoned/divorced only), and
- Asylum seekers (both registered and vulnerable only)

WFP and UNHCR started the provision of exceptional temporary food rations for the first group of 181 verified refugee ID-card absentees in February 2011. This group of beneficiaries has increased to 317 refugees by the 31 March 2011.

## **Rationale for the UNHCR-WFP JAM**

UNHCR and WFP Country Offices in Nepal will designate officials with relevant expertise and functional responsibilities to work on the 2012 JAM, including staff members of both UN agencies in Kathmandu and Damak. Representatives from bilateral and/or multilateral donors (EU, ECHO & Us PRM) with relevant technical expertise and committed to the full itinerary of the mission will be invited to participate as observers in the mission. Additionally, Implementing/Cooperating Partners, who are involved directly with the implementation of the operation, may be requested to contribute their expertise and observations to the 2012 JAM.

The key areas to be reviewed during the JAM regarding the refugee operation are:

- The overall food and nutrition security of refugees in light of on-going third country resettlement and camp consolidation.
- Review of assistance modalities (cash, cash and food and food only), ration size and composition of current food basket. As a first step in reviewing the viability and feasibility of a cash based assistance approach, WFP conducted a market assessment in December 2011 (Annex 1). Further review and analysis will be part of the terms of reference of the JAM.
- Logistical arrangement for food receipt, storage, handling, and distribution management.
- Protection challenges for residual refugee population in the context of reduced numbers and durable solutions that are currently available.
- Existing partnerships and collaboration among the GoN, UN sister agencies, I/NGOs, CBOs, refugee and host communities.

Mentioned below are the main objectives of the JAM (based on the “UNHCR/WFP Joint Assessment Guidelines”).

### **Objectives in relation to the food assistance programme**

- a. Determine whether and how the performance of the on-going operation can be improved in relation to the defined objectives for the food security, nutritional status, and the general well-being of refugees and host communities<sup>3</sup>.
- b. Determine whether the present objectives remain appropriate in light of the current situation (security considerations included) and prospects for a durable solution, and propose modification, if needed.
- c. Review food assistance needs in terms of beneficiary group type. Also, review assistance options based on the market assessment and other discussions to advise on this topic. Assess exceptional temporary ration provisions for people not completed entire registration procedures and vulnerable non-refugee wives.
- d. Assess ration card, physical verification exercise of eligible ration receiving refugees, efficiency and effectiveness of Ration Suspension and Reinstatement Committee

---

<sup>3</sup>The goal of WFP's assistance (PRRO 200136) is (a) to save lives and maintain the nutritional status of the refugee beneficiaries by providing secure access to food; (b) to improve nutritional status of the refugee population, particularly among vulnerable groups including acute malnourished children under 5, pregnant and lactating women and chronically ill persons; (c) to restore and rebuild well-being of the refugee and host populations.

UNHCR's overall operational goals are to: a) Implementation of a comprehensive strategy that encompasses the transition from humanitarian to development assistance for the residual refugees and refugee hosting and impacted communities in coordination with the GoN and UN Country team, while pursuing voluntary repatriation to Nepal; b) Continued implementation of large scale resettlement programme for refugees from Bhutan while ensuring their protection and assistance in the camps.

(RSRC), and registration systems in light of their effectiveness and concurrence with standards.

- e. Assess care and maintenance activities and their current status with a view towards achieving a maximum possible level of food security pending a durable solution of resettlement and repatriation to Bhutan.
- f. Review the impact and adequacy of food and related non-food items (NFIs), more specifically in regard to (i) quality and quantity of food provided (including WFP food basket and UNHCR provisions for fresh vegetables); and (ii) food-related NFI supplies (i.e. cooking fuel/utensils).
- g. Review of present status of women's secured access to the food and NFIs with a goal to achieving and maintaining a minimum 80% participation in the management of food inputs and ensuring that the participation of refugee women is encouraged and strengthened at the decision making level within the refugee community.
- h. Validate the overall nutritional level in the camps based on CDC 2011 nutritional study that determined causes of malnutrition and remedial measures.
- i. Assess the implementation of on-going supplementary feeding programmes (based on the WFP/UNHCR Selective Feeding Guidelines).
- j. Review logistics set-up for food and non-food items, focusing on (i) the effectiveness of Lutheran World Federation (LWF) in handling and distribution, (ii) the loss recording system and the efficiency of bi-monthly physical verification of food commodities and (iii) the level of operational reserve stocks in light of the current political environment.
- k. Assess the on-going security situation and its implications on food security and delivery; and devise contingency plan for food-related logistical activities.
- l. Assess the extent to which the 2008 JAM recommendations have been implemented and make updated recommendations for the next phase.

## Methodology

In close consultation with the GoN, WFP, UNHCR, donor representatives, NGO partners, refugees, and local population in camp-surrounding areas, the joint mission will carry out the regular management review and needs assessment.

Both secondary and primary data will be collected and analysed during the process. Information/data will be gathered through field visits and inspection of general conditions at the site, direct observations, key informant interviews with Implementing/Cooperating Partners and stakeholders, focus group discussions and analysis of available studies and reports.

The key documents will be compiled by UNHCR/WFP focal point into a comprehensive information package, to be distributed to all mission participants. The package will include guiding questions and background materials for conducting qualitative and quantitative assessment. Focal person in WFP and UNHCR will coordinate the overall technical aspects of the mission and backstop the two teams comprised of 7-8 members each. Mission members will also meet with the Cooperating/Implementing Partners (CPs/IPs) at the UNHCR Damak office prior to heading to the camps. The three donor representatives will serve as observers and will be given the liberty to move between the teams. Each team will be given specific areas of focus as outlined below:

Team	Area of Focus
A (Team leader: WFP)	Food Security (including ration size and composition)
	Logistics/Warehouse Management
B (Team leader: UNHCR)	Protection, Refugee Number and Durable Solutions
	Refugee Welfare
	Health Sanitation and Nutrition

The two teams will conduct interviews, focus group discussions, and meetings with various stakeholders in the two camps in their focus area mentioned above.

Field visits to Damak will be conducted for three days, from **25 June to 27 June 2012**. On the last day the teams will meet separately to consolidate their findings and draft recommendations and will receive feedback from the main implementing partners in the focus area. These findings and recommendations will form the basis of this Mission Report. Consequently major findings and recommendations will be presented to the UNHCR and WFP Country Representatives and the Government of Nepal along with an outline of the report. Once comments have been incorporated and the JAM report has been approved by both agencies, the major findings will again be shared with the main implementing/cooperating partners at the field level.

### **Key activities**

Specific activities include:

- 1) Desk review of the key documents: project documents, 2012 JAM information package, 2008 JAM report, all nutrition surveys conducted by CDC after June 2008 till present, key health and nutrition indicators in AMDA Annual reports 2008 to present, WFP 2011 Standard Project Report, other IP/CP reports, JNA report, CBDP/TSI proposal, and other relevant documents as required;
- 2) Review of operational contingency plans in terms of food and related non-food inputs; potential contingency plans, and related needs will be made;
- 3) A field visit to refugee camps and local areas will be conducted by the team of JAM as per detailed itinerary;
- 4) Group/individual interviews with refugees will be carried out as per the itinerary;
- 5) Women's participation in the management of food and non-food items will be observed directly or assessed through interviews;
- 6) Meetings with the implementing and cooperating partners and the GoN counterparts will be conducted;
- 7) District and Central-level debriefing on key recommendations will be carried out for the GoN partners and donors;
- 8) Compilation of key findings and recommendations will be carried out by team leaders; and
- 9) Finalization of the JAM report by mission leader.

### **Outputs**

The mission will make specific recommendations and prepare:

- provisional conclusions and recommendations to be presented to and discussed with the GoN, donor representatives, concerned UN agencies, and partner NGOs in wrap-up meetings; and
- a mission report covering the points and issues listed above, which will form the basis of the next WFP and UNHCR operations in support of the refugees from Bhutan in Nepal.

## **Joint Assessment Mission Composition**

### **Mission Leader**

Michael Sheinkman, Senior Regional Programme Advisor, WFP Regional Bureau for Asia

### **WFP**

Marco Cavalcante, Head of Programme, Country Office (CO) Kathmandu

Sridhar Thapa, Programme Officer (VAM/Market), CO Kathmandu

Manoj Upreti, Logistic Officer, CO, Kathmandu

Subhash Singh, Field Coordinator, CO Kathmandu

Sophiya Upreti, Programme Officer Nutrition, CO Kathmandu

Anette Wilhelmsen, Programme Officer, CO Kathmandu

Amrit Gurung, Nutrition Programme Officer, CO Kathmandu

Jagdish Pant, HoSO/OIC, Sub Office Damak

### **UNHCR**

Soo-Jin Rhee, Senior Programme Officer, Representation Office Kathmandu (ROK)

Pankaja Bhattarai, Associate Programme Officer, ROK

Mads Madsen, Field Safety Advisor, Sub-Office (SO) Damak

Sushil Karki, Assistant Durable Solutions Officer, SO Damak

Eirin Broholm, Associate Community Services Officer, SO Damak

Anup Aryal, Associate Programme Officer, Sub-Office SO Damak

Lakruwan Dassanayake, Associate Health Coordinator, SO Damak

Sharmin Shafique, Associate Nutrition Coordinator, SO Damak

### **Donor Representatives (Observers to be invited)**

Keith Kedlac, Deputy Refugee Coordinator, US Embassy

Shanon Small, Summer Associate, US Embassy

Enora Marenne, Programme Manager, EU

Samuel Marie Fanon, Acting Head of Office, ECHO Nepal (based in Regional Office)

Piyush Kayastha, Programme Officer, ECHO, Nepal

### **Rapporteur**

Pukar Ghimire, External Relations Assistant, UNHCR SO Damak

Prabin Shrestha, Office Assistant (Programme), WFP SO Damak

## 2012 WFP-UNHCR Joint Assessment Mission (JAM) Activities and Specific Objectives

Activity	Subject/Issue	*Team Members
<b>Food Security</b>	1a. Commodity utilization	Team A
	1b. Assess food assistance targeting, distribution and monitoring including CMC's role in food handling and distribution management	
	1c. Food access and utilisation	
	1d. Review ration size and composition of current food basket	
	1e. Reviewing assistance modality based on market assessment and other discussions to advise on this. <ul style="list-style-type: none"> <li>• Refugee cash spending patterns</li> <li>• Refugee preference (food/cash)</li> <li>• Refugee use of financial services</li> </ul>	
	1f. Assess efficiency and effectiveness of Ration Suspension and Reinstatement Committee	
	1g. Assess provision of exceptional temporary rations	
	1h. New ration card issuance and physical verification exercise of the refugees.	
	<b>Refugee Welfare</b>	
2b. Assess market prices and commodity availability		
2c. Assess sales of food and non-food aid items, resulting impact on consumption and nutritional values		
2d. Assessment of WFP assisted supplementary activities i.e. Reclamation Gardening Programme, Loan Scheme Programme etc.		
2e. Vocational activities for refugees pending resettlement departure and host communities (coordination, best practices, monitoring and future assessment)		
<b>Health, Sanitation, and Nutrition</b>	3a. Water and sanitation services in the camps	Team B
	3b. Existing health programmes in the camps	
	3c. On-going joint programmes (Micro Nutrient Powder Supplementation)	
	3d. HIV/AIDS programme in the camps and host communities	
	3e. Nutrition programmes in the camps and the underlying causes behind prevailing malnutrition rates in the camps despite all the on-going interventions.	
	3f. Review nutritional composition of ration provided to refugees	
	3g. Targeting vulnerable refugees and suggested indicators	
	3h. Assess health and nutrition programme	
<b>Logistics</b>	4a. Warehouse capacity and storage conditions	Team A
	4b. Modality of delivery, targeting and distribution of food and related assistance	
	4c. Food and related NFI assistance required	
	4d. Use of WFP empty containers	
	4e. Assess Loss/Excess Recording System, especially on bi-monthly physical verification exercise of food commodities	
	4f. Sharing of damaged commodities disposal procedure	
	4g. Access of roads to the camps	

Activity	Subject/Issue	*Team Members
<b>Protection, Refugee Numbers, and Durable Solutions</b>	5a. Protection issues (GBV)	Team B
	5b. Refugee registration, update on non-registered children, and distribution of ID cards.	
	5c. Government policy updates on refugees	
	5d. Voluntary repatriation and resettlement (trends, logistics, warehouse capacity, etc.)	
	5e. Impact of large-scale resettlement on UNHCR-WFP programmes, and its impact on programmes targeting vulnerable refugees	
	5f. Planning beneficiary figure	
	5g. Enhanced Commitments to Women (WFP) and Five Commitments to Refugee Women (UNHCR).	
	5h. Assess protection and community services programme	
	5i. Movement restrictions and physical security (in and outside camps)	
	5j. Security situation and arrangement in the camps	

\*Detailed team composition and area of focus camp wise will be reflected in the Programme Schedule

Annex 3- Mission Programme (Detail Itinerary)

**Joint Assessment Mission (JAM) 2012  
Detail Itinerary (TEAM A & B)**

Date/Time	Venue	Activity	Key Participants	Remarks
<b>Monday 25 June 2012</b>				
12:00-12:30	CDO Office, Jhapa	Meeting with CDO	All participants	
13:30-14:30	IOM Guest House	Lunch	All participants	
14:30-15:30	UNHCR SOD	Welcoming session by HCR/WFP	All participants	
15:30-16:30	UNHCR SOD	Briefing with Implementing Partners	All participants	

Date/Time	Venue	Activity	Key Participants	Camp Venue
<b>Tuesday, 26 June 2012</b>				
<b>TEAM A (Sub Team-1)</b>				
08:30-09:00	Damak	Depart Damak	Mission members	
09:00-10:00	<b>Beldangi</b>	<b>FGD:</b> Camp Management Committee (CMC) officials and members	Mission members- Camp Secretary Deputy Camp Secretary Gender Focal Point Sector head DSC member Sub-Sector head/Assistant (Team comprised of male/ female)	CMC Hall, Beldangi-II
10:00-10:30		<b>Interaction:</b> RCU Officials	Camp Supervisor and Assistant Camp Supervisor	RCU office, Beldangi-II
10:30-11:15		<b>Observation:</b> Food Distribution Process, FBM & NFI Distribution Process	Mission members	FDC & FBM Beldangi-II
11:15-12:15		<b>FGD:</b> Refugee beneficiaries in sub-sector 'F3'	Refugee beneficiaries (Male/Female equally) collecting rations from distribution counters	FDC No. 2
12:15-13:00		<b>LUNCH</b>	Mission Members	Camp canteen

13:00-14:00		<b>FGD:</b> WFP cooperating partners	CMO Store Keeper Assistant Store Keeper FDM Centre for Quality Surveillance Food Basket Officer Shelter Management Clerk	LWF camp office
14:00-14:45		<b>Observation:</b> PDM process and gardening activities	Mission members, Rajendra Lama, FDM (LWF)	Sub-sectors: I1, G4, I4, C2
14:45-15:45		<b>FGD:</b> Refugee beneficiaries at sub sector 'B4'	Refugee beneficiaries	Sub-sector: 'B4'
15:45-16:00		<b>Observation:</b> Reclamation Gardening Programme	Mission Members	CRN Beldangi-II
16:00-16:15		Depart Beldangi camp	Mission Members	
16:30-17:30		WFP/UN HCR SOD	Debriefing	Mission Members
<b>Date/Time</b>	<b>Venue</b>	<b>Activity</b>	<b>Key Participants</b>	<b>Camp Venue</b>
<b>TEAM B (Sub Team-1)</b>				
08:45-09:00	Damak	Depart Damak	Mission members	
09:00-10:00	<b>Beldangi</b>	<b>Hut Visit</b> (including latrine, drinking water tap, water reservoir, solid waste management system, drainage system and RGP in host community) and interaction with refugee family	Mission members	Beldangi-II
10:00-11:45		<b>FGD:</b> Health, Sanitation, and Nutrition	Refugee and Host community	AMDA Hall, Beldangi
11:45-12:20		<b>LUNCH</b>	Mission members	Camp Canteen
12:20-13:30		<b>Visit</b> Camp Health Centre	Mission members	AMDA PHCP, Beldangi-II

13:30-14:45		<b>Interview:</b> Key informants	AMDA/LWF/SADG- <u>TEAM MEMBERS</u> Project Director Health Coordinator Nutrition Coordinator Community Health Liaison Officer CMO from each camp CMC from each camp, RH Officer, HIV and AIDS Officer VCT counsellors from each Camp Out reach Educators Food Basket Monitoring officer LWF focal persons SADG Programme Coordinator	AMDA PHCP, Beldangi- II
14:45-15:15		<b>Observation:</b> Theatre for Development (Street Drama), SADG	Mission members	Beldangi camp
15:15-15:30		Depart Beldangi camp	Mission members	
15:30-16:30		UNHCR SOD	Debriefing	Mission members
<b>Date/Time</b>	<b>Venue</b>	<b>Activity</b>	<b>Key Participants</b>	<b>Camp Venue</b>
<b>TEAM A (Sub Team-2)</b>				
08:30-09:00	Damak	Depart Damak	Mission members	
09:00-10:00	<b>Sanischare</b>	<b>Observation and familiarization:</b> Food storage and handling process -WFP Hall -Permanent warehouse -Non Food warehouse	LWF Store Keeper, Assistant Store Keeper and Food Distribution Monitor, Distribution Sub-Committee	Warehou se, Sanischa re camp
10:00-10:30		<b>Interaction:</b> RCU officials	Camp Supervisor and Assistant Camp Supervisor	RCU office, Sanischa re
10:30-11:30		<b>FGD:</b> CMC officials and members	Mission members, Camp Secretary and Members of DSC unloaders - Warehouse security guards -Sub-sector heads	Food Basket monitorin g centre

11:30-12:30		<b>FGD:</b> WFP cooperating partners	Logistics Manager LWF, CMO Store Keeper Assistant Store Keeper FDM Centre for Quality Surveillance Shelter Management Clerk	CMC Meeting Hall
12:30-13:30		<b>LUNCH</b>	Mission Members	Camp canteen
13:30-14:00		<b>Observation:</b> WFP handled Non-food items warehouse	Mission Members	Warehouse, Sanischare camp
14:00-14:10		Depart Sanischare		
14:10-15:10		<b>Observation:</b> Rice mills (Arunudaya Rice Mill) at Pathari	Mission Members	Pathari areas
15:30-16:30		<b>FGD:</b> WFP transporters & suppliers	Mission Members	WFP SOD
16:30-17:30		WFP/UN HCR SOD	Debriefing	Mission Members

Date/Time	Venue	Activity	Key Participants	Camp Venue
<b>TEAM B (Sub Team-2)</b>				
08:45-09:00	Damak	Depart Damak	Mission members	
09:00-10:00	Beldangi	<b>Hut Visit and interaction:</b> Refugee families	Mission members	Beldangi-I camp
10:00-11:45		<b>FGD:</b> Protection, Refugee Numbers and Durable solutions	Refugee and Host community	CMC Meeting Hall, Beldangi-I
11:45-12:20		<b>LUNCH</b>	Mission members	Camp canteen
12:20-13:30		<b>Visit</b> camp based agency offices including CBOs such as BRWF, CMC, BRCF, YFC and CWT offices etc.	Mission members	Beldangi-I camp
13:30-14:45		Interview with key informants	<u>UNHCR functional units</u> Relevant Staff members of Protection Unit Relevant staff members of Durable Solution units	CMC Meeting Hall, Beldangi-I
14:45 – 15:00		Depart Beldangi camp	Mission members	

15:30-16:30		Debriefing	Mission members	
-------------	--	------------	-----------------	--

Wednesday, 27 June 2012				
Date/Time	Venue	Activity	Key Participants	Camp Venue
<b>TEAM B (Sub Team-2)</b>				
08:00-08:20	Damak	Depart Damak	Mission members	
08:20-09:00	Sanischare	Hut Visit and interaction with refugee families	Mission members	Sanischare camp
09:00-09:30		FGD on Refugee Welfare	Refugee and Host community	CMC Hall, Sanischare
09:30-10:30		Visit BRWF office and VT activities and interview with key informants	LWF Team members and CBOs Regional Programme Coordinator Senior Programme Officer Community Development Office CBOs BRWF Executive members and central coordinator Loan Beneficiaries (BRWF)	BRWF, IGA Activities area
10:30-10:50		Depart Sanischare camp	Mission members	
10:50-11:30	UNHCR SOD	Debriefing	Mission members	
11:30-12:00	IOM Guest	Lunch	Mission members	
12:15-13:15	Depart Damak	Depart Damak	Mission members	
13:15-13:45	CDO office, Chandragadhi	Meeting with CDO	Mission members	
Date/Time	Venue	Activity	Key Participants	Camp Venue
<b>TEAM A (Sub Team 1)</b>				
08:30-09:00	Damak	Depart Damak	Mission members	
08:00-9:30	Sanischare	FGD: Outstanding issues identified during debriefing if any or Hut visit	Mission members	Sanischare
10:00-		Depart from Sanischare	Mission members	

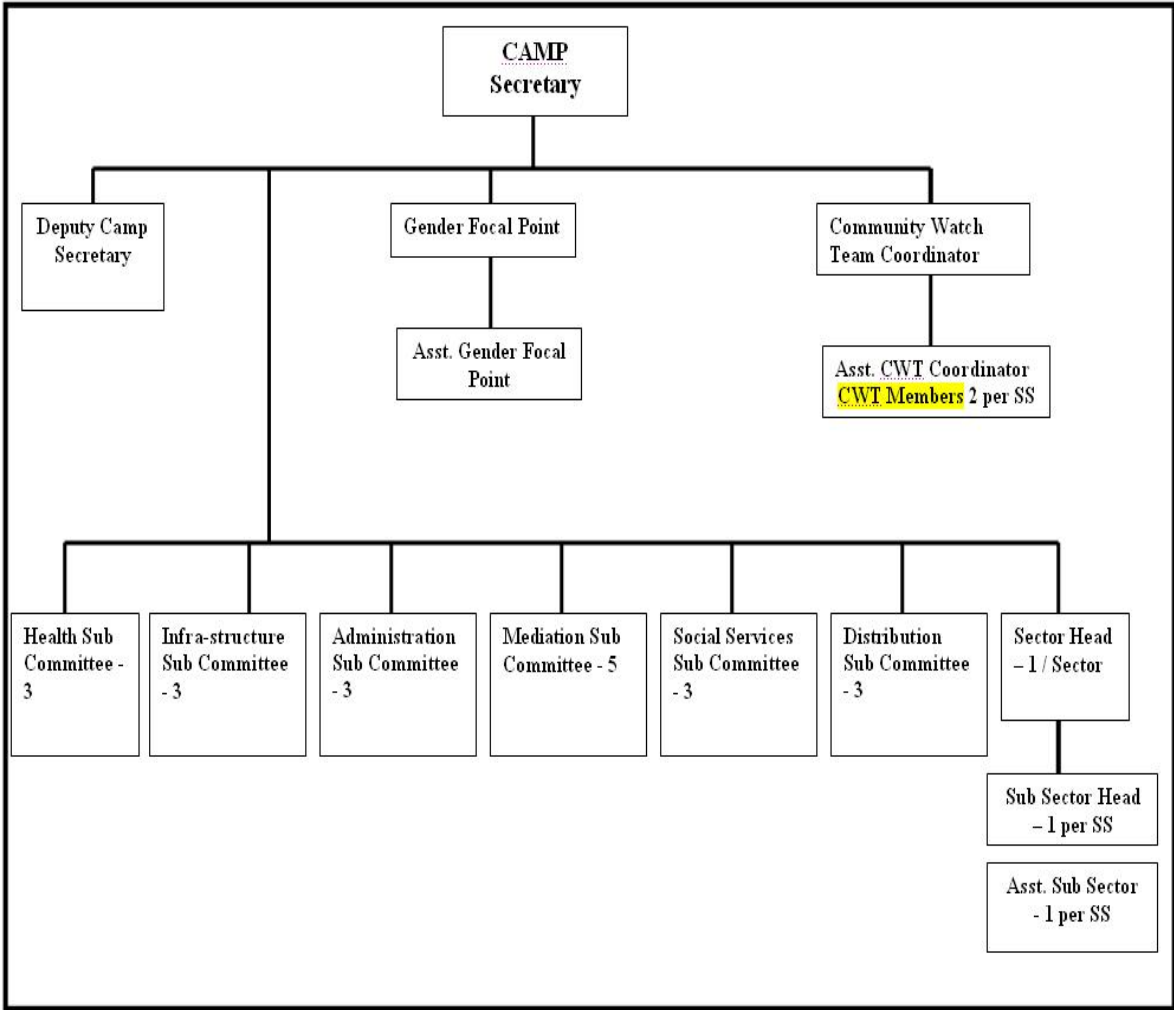
10:30				
<b>Date/Time</b>				
<b>Venue</b>				
<b>Activity</b>				
<b>Key Participants</b>				
<b>Camp Venue</b>				
<b>TEAM A (Sub Team 2)</b>				
08:30-09:00	Damak	Depart Damak	Mission members	
08:00-9:30	Beldangi	<b>FGD:</b> Outstanding issues identified during debriefing if any or Hut visit	Mission members	Beldangi II
10:00-10:30		Depart from Beldangi	Mission members	

Annex 4- Camp Population by Age and Gender as of June 2012

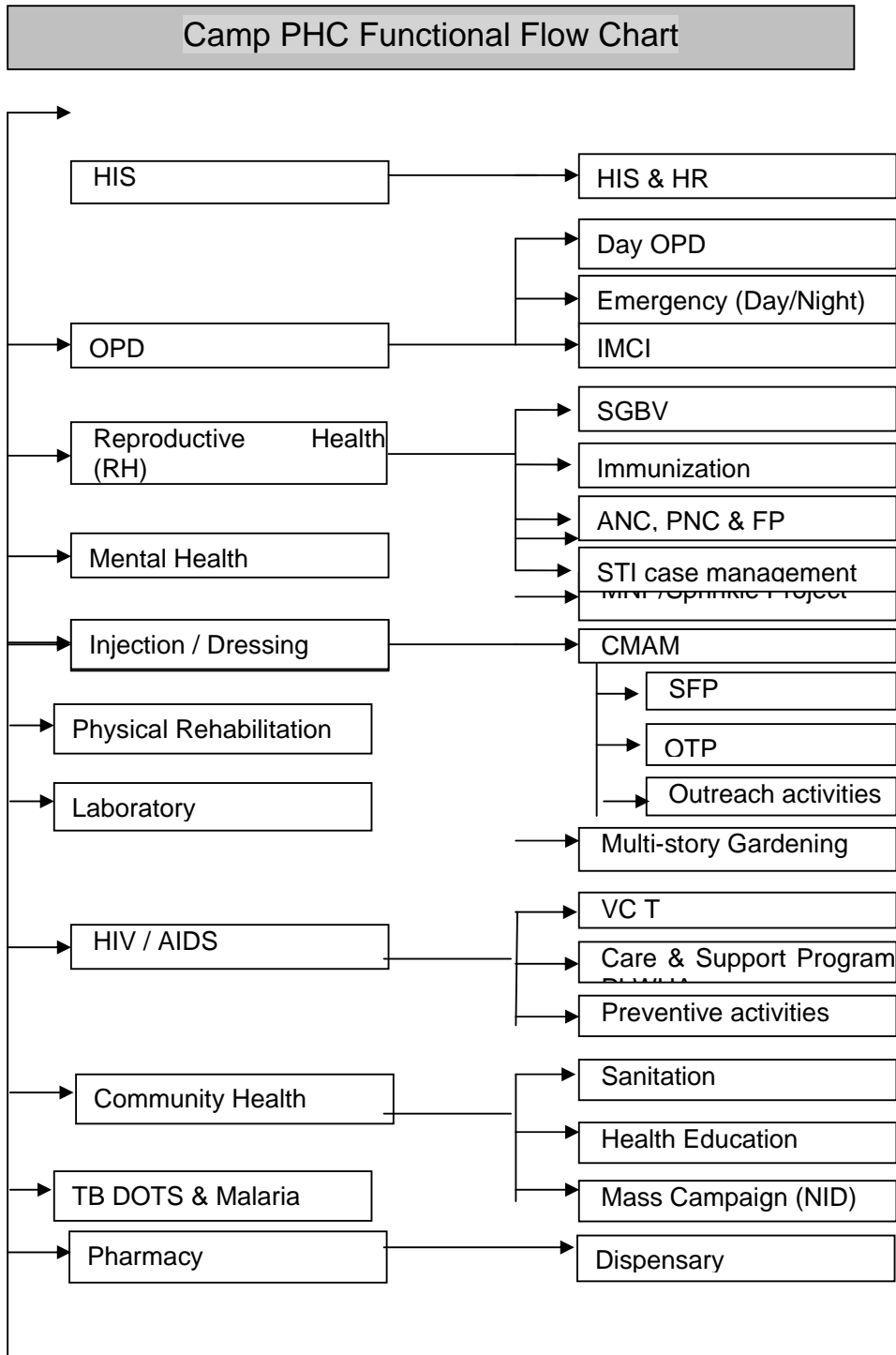
Statistical Demographical Profile of Refugee population - 30 Jun 2012 (All Camps)																			
Refugees by camp	0 - 4			5 - 11			12 - 17			18-59			60 and over			Total			HR1
	M	F	Total	M	F	Total	M	F	Total	M	F	Total	M	F	Total	M	F	Total	(Total)
<b>Beldangi</b>	1,681	1,629	3,310	2,283	2,190	4,473	2,538	2,283	4,821	10,455	10,287	20,742	1,564	1,265	2,829	18,521	17,654	36,175	5,447
<b>Sanischare</b>	502	482	984	752	682	1,434	759	757	1,516	3,089	3,075	6,164	480	362	842	5,582	5,358	10,940	1,513
<b>Out-of-Camp</b>	0	2	2	1	3	4	1	1	2	27	10	37	2	3	5	31	19	50	18
<b>Total</b>	<b>2,183</b>	<b>2,113</b>	<b>4,296</b>	<b>3,036</b>	<b>2,875</b>	<b>5,911</b>	<b>3,298</b>	<b>3,041</b>	<b>6,339</b>	<b>13,571</b>	<b>13,372</b>	<b>26,943</b>	<b>2,046</b>	<b>1,630</b>	<b>3,676</b>	<b>24,134</b>	<b>23,031</b>	<b>47,165</b>	<b>6,978</b>

Annex 5- Camp Management Committee (CMC) Organigramme

**CMC Structure**



Annex 6



### HIV and STI indicators in camps:

S.N	Indictors	2009	2010	2011
1	Condom Distribution Rate	0.5	0.5	0.4
2	PMTCT Coverage Rate	45	87	79
3	Incidence of STI	1.1	1.0	0.9
4	Proportion of VCT service used by Nationals	4	5	3
5	Proportion of Eligible POC receiving ART	100	100	100

Source; Annual HIS report, 2011

### Water and sanitation status from the year 2009-2012

S.N	Particulars	2009	2010	2011
1	Average Quantity of Portable water per person per day	23	27	28
2	No of person per usable water tap	76	113	102
3	Number of person per drop hole in communal latrine	74	74	13
4	Proportion of population living within 200 m from water point	100	100	100
5	Proportion of families with latrines	100	100	100
6	Proportion of families receiving more than 250 g of soap/person/month	1000	100	100
7	Proportion of camps with 1 hygiene promoter/500 person	-	-	12
8	Incidence of Diarrhoea (per 1000/month)	7.4	7.2	7.4

**Source:** Nepal country Report, UNHCR