

Akkar Governorate Informal Settlement Sweep Summary

For Humanitarian Use Only
Production Date: 03 July 2014

2nd Sweep: March 31st - May 28th, 2014



303 Active Informal Settlements

84 New IS identified in the past month

242 Less than 4 shelter settlements

4,408 Shelters

22 Inactive IS in the past month

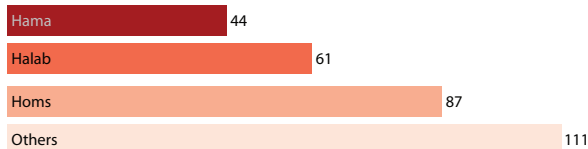
454 Shelters in < 4 settlements

27,667 Individuals

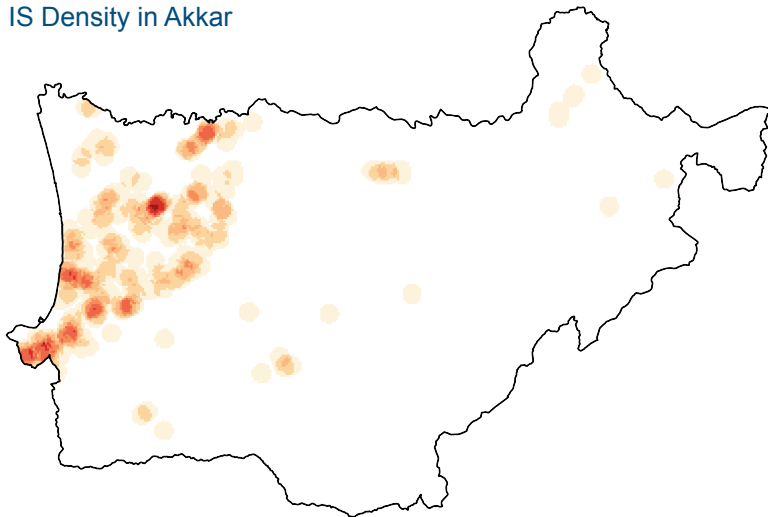
19 New IS verified from partner data*
*not included in total until coded

2,936 Individuals in < 4 settlements

Places of Origin of Syrian Refugees



IS Density in Akkar

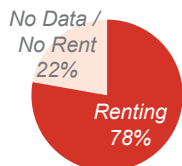


2nd Sweep Question: How Many Latrines in IS?

47% 142 IS have **no latrines**

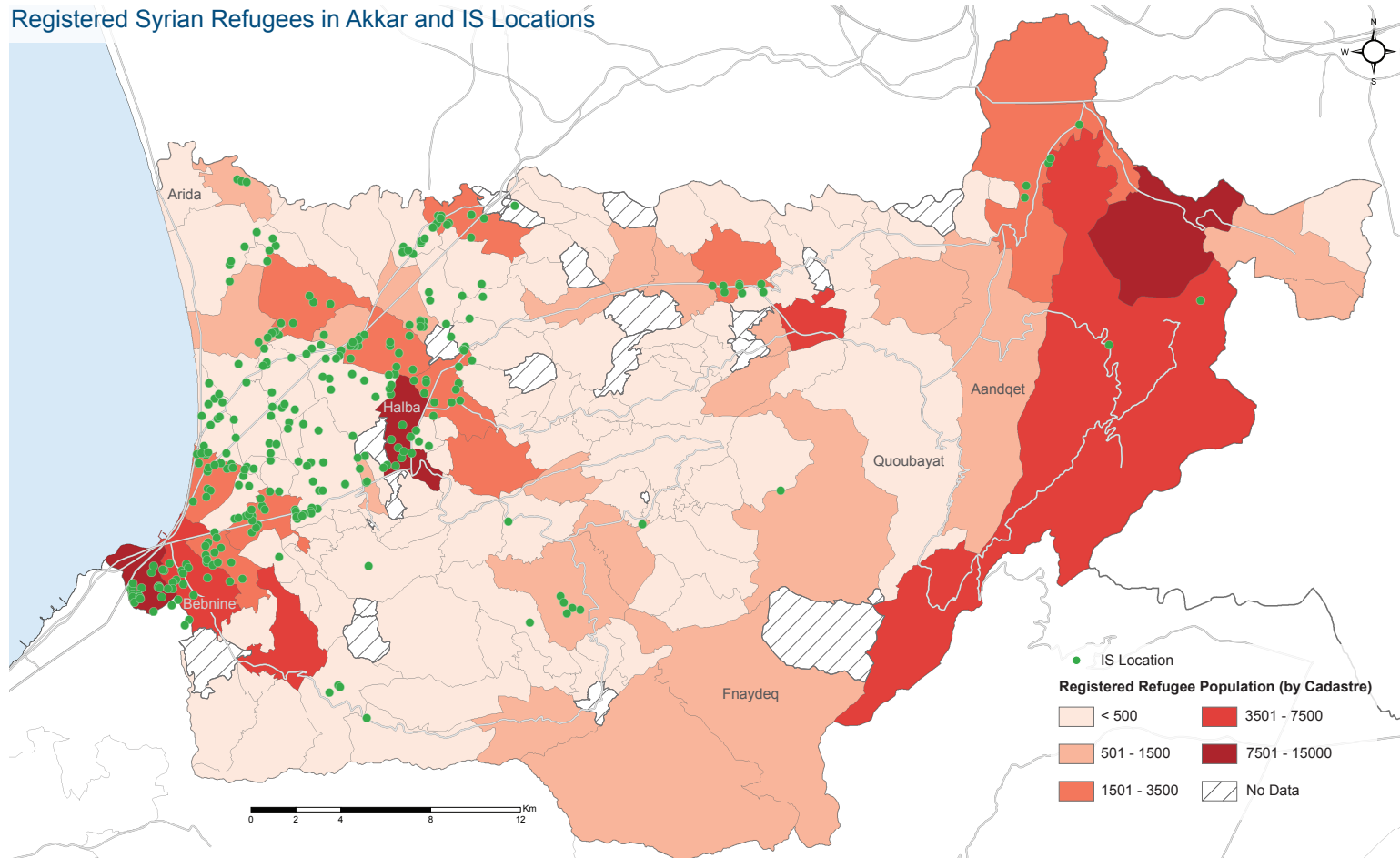
19% 58 IS are within the Sphere standard of **20 persons per latrine**

Refugee Renting* Lands



*Note: there were no specific questions concerning the data about basic needs and renting. The Shawish was given the freedom to add any comments/complaints at the end of the survey

Registered Syrian Refugees in Akkar and IS Locations



REACH began implementing the second sweep of IS on March 31, 2014. Using the geographic sweep approach agreed upon by Interagency Mapping Platform (IMAP) partners, REACH identified, geo-referenced, and collected key data on all IS in Akkar over a 6 week period. Data on IS in Akkar is updated on a continuous basis by REACH field teams who collect data on demographics, registration status, settlement leadership, landlords, date of establishment, rental costs, and place of origin.

Data on informal settlements is from the REACH IS Mapping Assessment (2nd Sweep) conducted between March and May 2014. Informal settlements (IS) are commonly established on either rented or unauthorized public or private land on the outskirts of population centers, and in many cases lack access to basic utilities and services. Shelters in informal settlements are predominately handmade with a combination of plastic sheeting, timber, and various other materials sourced by displaced persons.