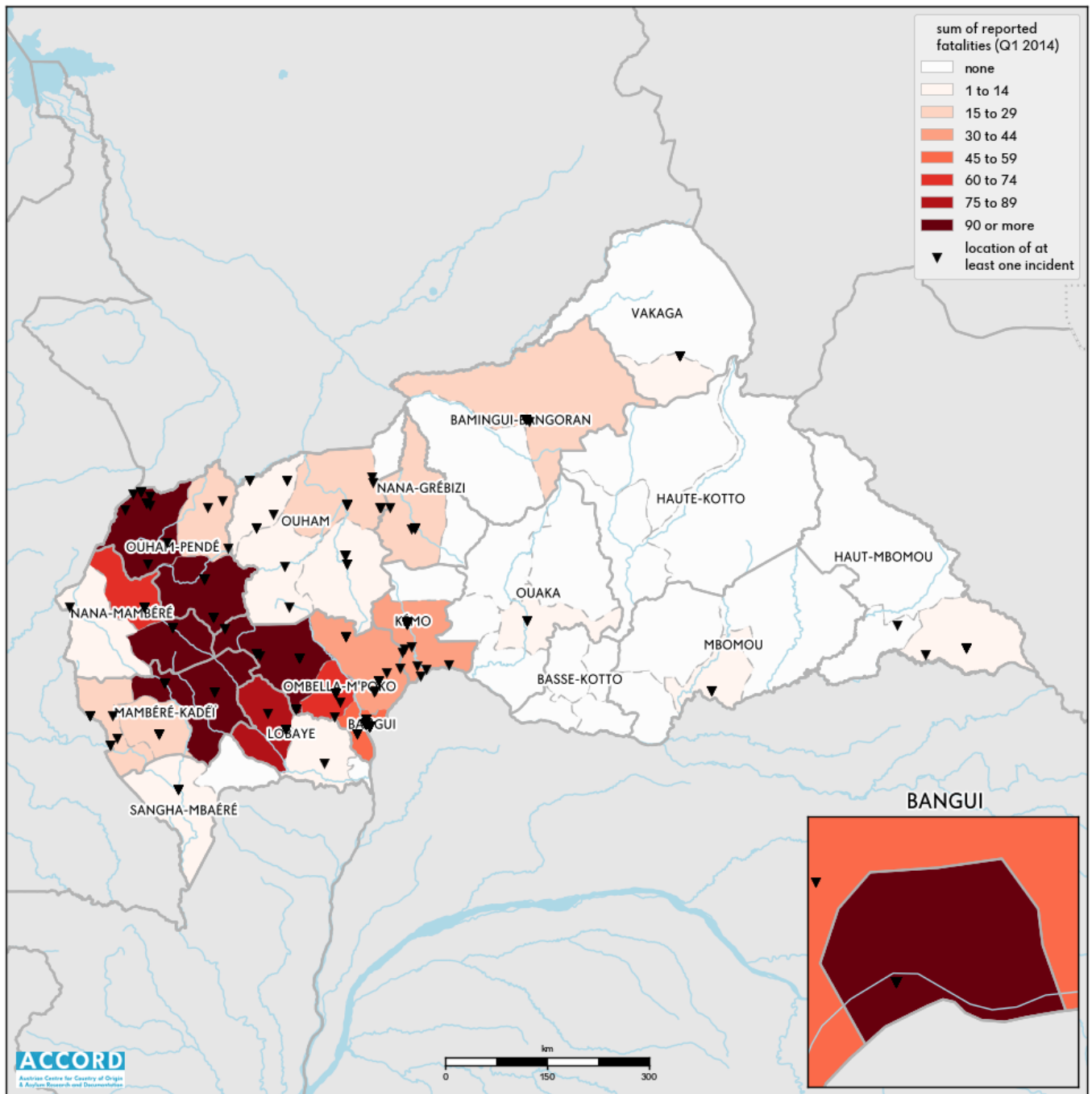


CENTRAL AFRICAN REPUBLIC, FIRST QUARTER 2014:

Update on incidents according to the Armed Conflict Location & Event Data Project (ACLED)

compiled by ACCORD, 3 November 2015



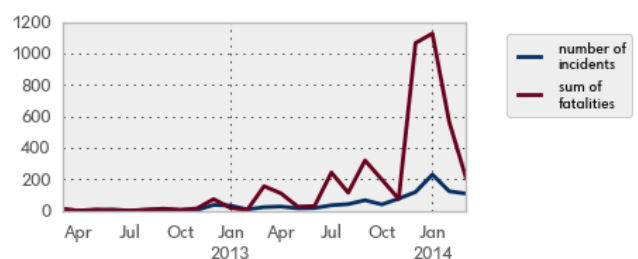
Political and administrative borders: GADM; incident data: ACLED; coastlines and inland waters: GSHHG

Conflict incidents by category

Category	Number of incidents	Sum of fatalities
violence against civilians	254	1317
battle	114	526
riots/protests	56	58
non-violent activities	39	0
Total	463	1901

This table is based on data from the Armed Conflict Location & Event Data Project (datasets used: Realtime 2015 All Africa File)

Development of conflict incidents from March 2012 to March 2014



This graph is based on data from the Armed Conflict Location & Event Data Project (datasets used: Realtime 2015 All Africa File; ACLED Version 5 standard file)

LOCALIZATION OF CONFLICT INCIDENTS

Note: The following list is an overview of the incident data included in the ACLED dataset. More details are available in the actual dataset (date, location data, event type, involved actors, information sources, etc.). In the following list, the names of event locations are taken from ACLED, while the administrative region names are taken from GADM data which serves as the basis for the map above.

In **Bamingui-Bangoran**, 10 incidents killing 18 people were reported. The following locations were affected: **Ndele, Pissigou, Yamani, Yangou Brindji**.

In **Bangui**, 192 incidents killing 364 people were reported. The following locations were affected: **Bacondja, Bangui, Bangui RDOT Camp, Bea Rex, Benz-Vi, Boeing, Boulata, Boy-Rabe, Catin, Combattants, Don Bosco, Eglise Freres Castor, Fatima, Fondo, Fouh, Galabadja, Gbakodja, KM5, Kasai, Kilometre Cinq, Kokoro, Lakouanga, Malimaka, Miskine, Ngongonon 2, PK11, PK12, PK13, PK16, PK5, Pétévo, Sara, Sica 2, Sica-Saidou, Yakité, Yangato, Yassimadji**.

In **Haut-Mbomou**, 8 incidents killing 2 people were reported. The following locations were affected: **Maboussou, Mboki, Obo**.

In **Kémo**, 20 incidents killing 41 people were reported. The following locations were affected: **Bac, Bango, Croisement, Guigui Kohoro, Isolé, Kotto, Lenge, Mabo, Ngbondou, Palingui, Pangbi Kroma, Possel, Sibut, Zenda**.

In **Lobaye**, 15 incidents killing 79 people were reported. The following locations were affected: **Baguermi, Boda, Cotonaf**.

In **Mambéré-Kadéï**, 29 incidents killing 219 people were reported. The following locations were affected: **Berberati, Carnot, Dilapoko, Djomo, Gamboula, Gbaya, Godawa, Guen, Korondo, Oré, Yakongo, Yamindi**.

In **Mbomou**, 2 incidents killing 11 people were reported. The following locations were affected: **Salanzé, Wango Bangassou**.

In **Nana-Grébizi**, 21 incidents killing 27 people were reported. The following locations were affected: **Baipo, Batcho, Boto, Camp-Fleur, Doté, Kaga Bandoro, Kologbo, Moscou, Ouandago, Piatpho, Wandago**.

In **Nana-Mambéré**, 18 incidents killing 258 people were reported. The following locations were affected: **Baoro, Bouar, Cantonnier, Lokoti-Banda, Vakap, Zaire**.

In **Ombella-M'Poko**, 66 incidents killing 415 people were reported. The following locations were affected: **Bangui, Begwa, Bimbo, Birlo, Boali, Boboua, Bogoula, Boguéré, Bossembélé, Boyali, Béal, Bégoua, Damala, Damara, Firi, Fondon, Gobongo, Harandé, Kolongo, Libi, Mbata, Ngatou, Ngupe, Pata, Vangué, Yaloke**.

In **Ouaka**, 2 incidents killing 6 people were reported. The following location was affected: **Bambari**.

In **Ouham**, 25 incidents killing 34 people were reported. The following locations were affected: **Bakayanga, Batangafo, Bazoa, Bazoua, Bogama I, Bogama II, Boguila, Bongoro Kette, Damba, Dangavo, Daouné, Kabo, Kafa, Kamakota, Koki, Kouki, Markounda, Nana Barya, Zini**.

In **Ouham-Pendé**, 44 incidents killing 418 people were reported. The following locations were affected: **Assana, Bang, Beboura, Bocaranga, Bossemptele I, Bowé, Bozoum, Mbéré, Ngaoundaye, Nzakoun, Paoua, Zoulde**.

In **Sangha-Mbaéré**, 7 incidents killing 7 people were reported. The following locations were affected: **Béa, Nola**.

In **Vakaga**, 4 incidents killing 2 people were reported. The following location was affected: **Sam-Ouandja**.

METHODOLOGY

The data used in this report was collected by the Armed Conflict Location and Event Data Project (ACLED). ACLED collects data on reported conflict events in selected African and Asian countries, Central African Republic being among them. ACLED researchers collect event data from a variety of sources and code them by date, location, agent, and event type. For further details on ACLED and for the full data, see www.acleddata.com and Raleigh, Clionadh, Andrew Linke, Håvard Hegre and Joakim Karlsen: Introducing ACLED-Armed Conflict Location and Event Data. *Journal of Peace Research* 47(5), 2010, p. 651-660.

Based on these data, the Austrian Center for Country of Origin & Asylum Research and Documentation (ACCORD) compiles updates on conflict incidents.

Incidents comprise the following categories: battle, headquarters or base established, non-violent activity by a conflict actor, riots/protests, violence against civilians, non-violent transfer of territory, remote violence. For details on these categories, please see

- ACLED – Armed Conflict Location & Event Data Project: Armed Conflict Location and Event Data Project (ACLED) Codebook, 2015
http://www.acleddata.com/wp-content/uploads/2015/01/ACLED_Codebook_2015.pdf
- ACLED – Armed Conflict Location & Event Data Project: Armed Conflict Location and Event Data Project (ACLED) User Guide, January 2015
http://www.acleddata.com/wp-content/uploads/2015/01/ACLED_User-Guide_2015.pdf

SOURCES

- ACLED – Armed Conflict Location & Event Data Project: ACLED Version 5 (1997 – 2014) standard file, undated
http://www.acleddata.com/wp-content/uploads/2015/06/ACLED-Version-5-All-Africa-1997-2014_dyadic_Updated_csv-no-notes.zip
- GADM – Global Administrative Areas: CAF_adm.zip, Version 2.7, August 2015
http://biogeo.ucdavis.edu/data/gadm2.7/shp/CAF_adm.zip
- GSHHG - Global Self-consistent Hierarchical High-resolution Geography, Version 2.3.5, 1 May 2015
<http://www.soest.hawaii.edu/pwessel/gshhg/gshhg-gmt-nc4-x.x.x.tar.gz>
- Raleigh, Clionadh, Andrew Linke, Håvard Hegre and Joakim Karlsen: Introducing ACLED-Armed Conflict Location and Event Data. *Journal of Peace Research* 47(5) 651-660, 2010
<http://jpr.sagepub.com/content/47/5/651.full.pdf+html>

DISCLAIMER

Most of the data collected by ACLED is gathered based on publicly available, secondary reports. It may therefore underestimate the volume of events. Fatality data particularly is vulnerable to bias and inaccurate reporting, and ACLED uses the most conservative estimate available. Furthermore, event data may be revised or complemented in future updates. The lack of information on an event in this report does not permit the inference that it did not take place. The boundaries and names displayed do not imply endorsement or acceptance by the Austrian Red Cross.

Cite as

- ACCORD - Austrian Center for Country of Origin & Asylum Research and Documentation: Central African Republic, first quarter 2014: Update on incidents according to the Armed Conflict Location & Event Data Project (ACLED), 3 November 2015