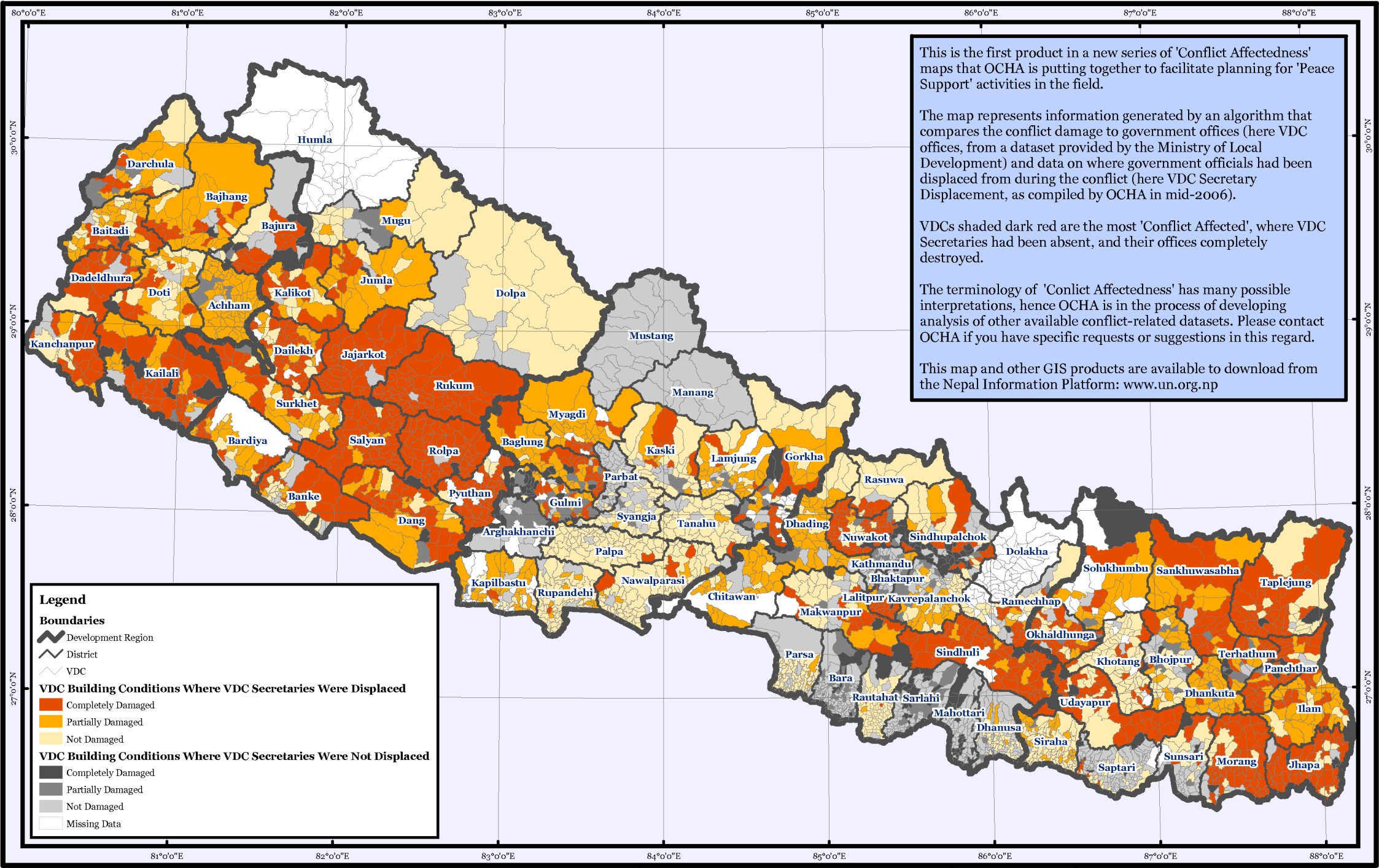


# NEPAL: "Conflict Affectedness" Mapping – The Impact on Local Government



This is the first product in a new series of 'Conflict Affectedness' maps that OCHA is putting together to facilitate planning for 'Peace Support' activities in the field.

The map represents information generated by an algorithm that compares the conflict damage to government offices (here VDC offices, from a dataset provided by the Ministry of Local Development) and data on where government officials had been displaced from during the conflict (here VDC Secretary Displacement, as compiled by OCHA in mid-2006).

VDCs shaded dark red are the most 'Conflict Affected', where VDC Secretaries had been absent, and their offices completely destroyed.

The terminology of 'Conflict Affectedness' has many possible interpretations, hence OCHA is in the process of developing analysis of other available conflict-related datasets. Please contact OCHA if you have specific requests or suggestions in this regard.

This map and other GIS products are available to download from the Nepal Information Platform: [www.un.org.np](http://www.un.org.np)

**Legend**

**Boundaries**

- Development Region
- District
- VDC

**VDC Building Conditions Where VDC Secretaries Were Displaced**

- Completely Damaged
- Partially Damaged
- Not Damaged

**VDC Building Conditions Where VDC Secretaries Were Not Displaced**

- Completely Damaged
- Partially Damaged
- Not Damaged
- Missing Data